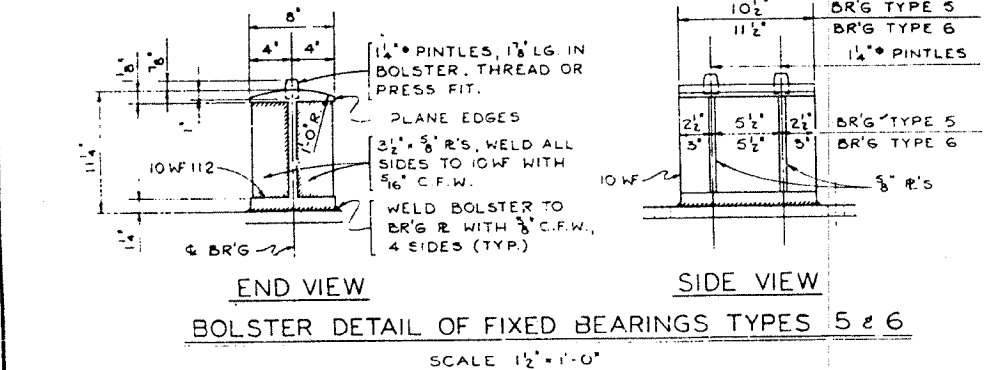
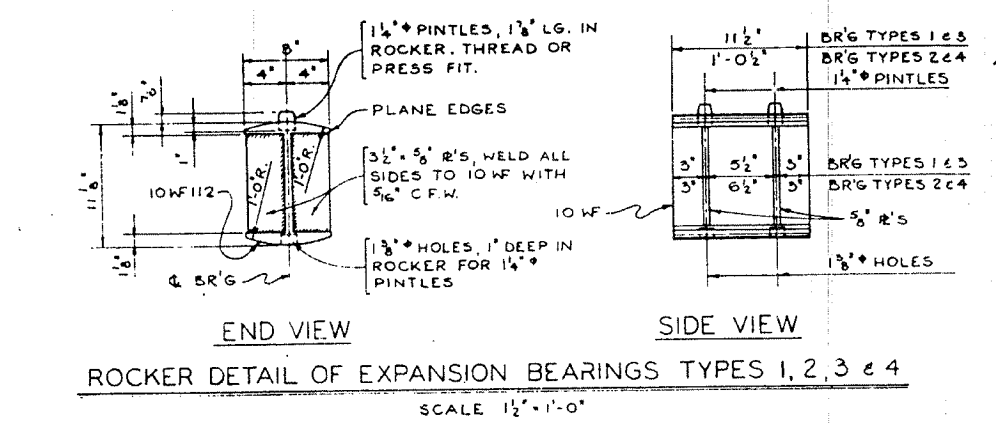
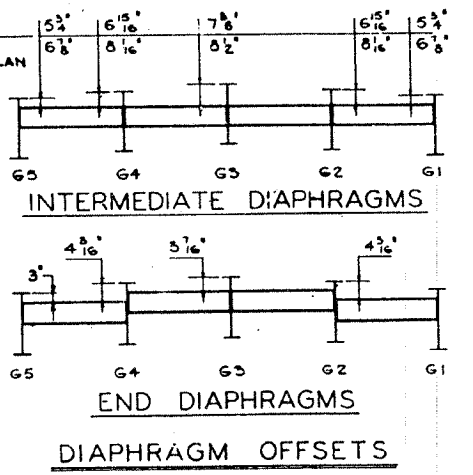
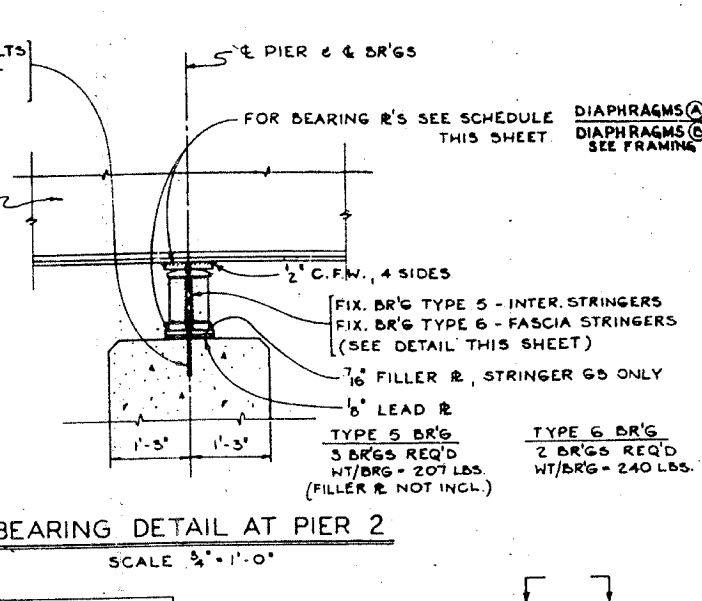
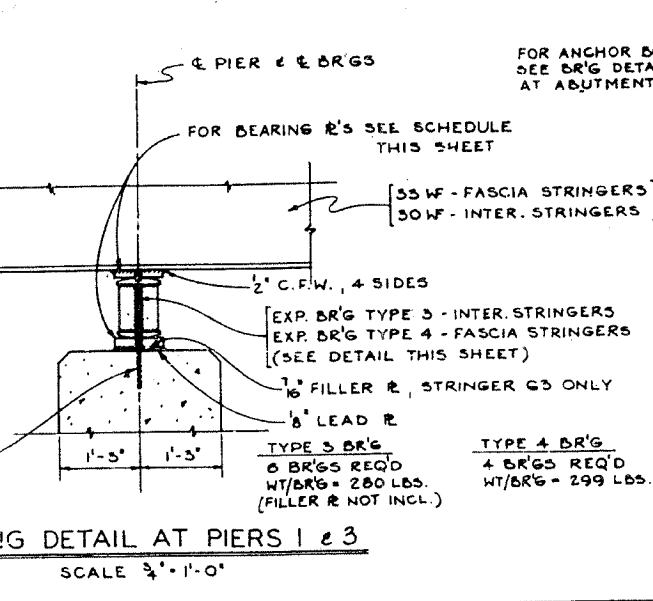
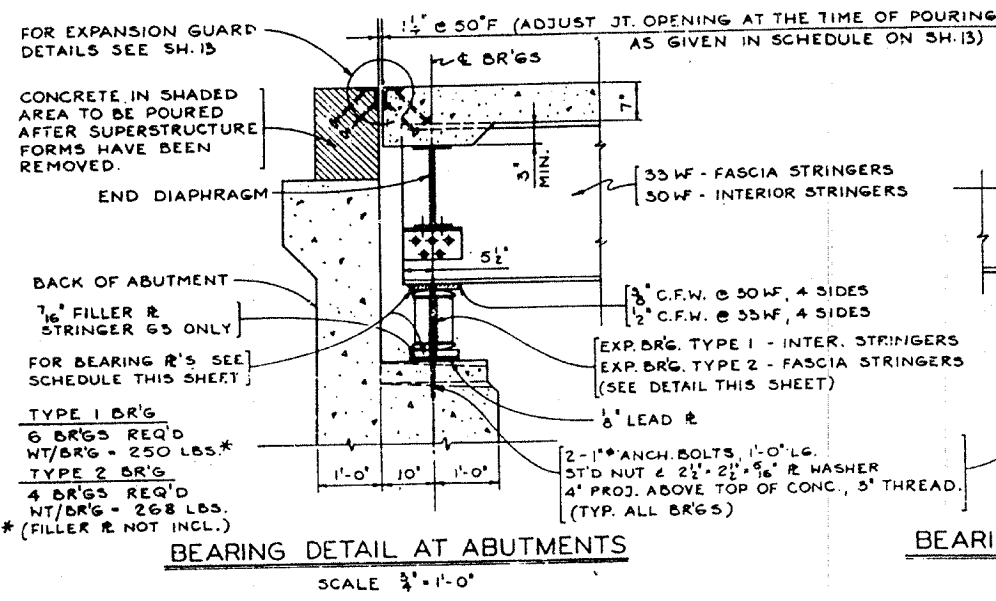
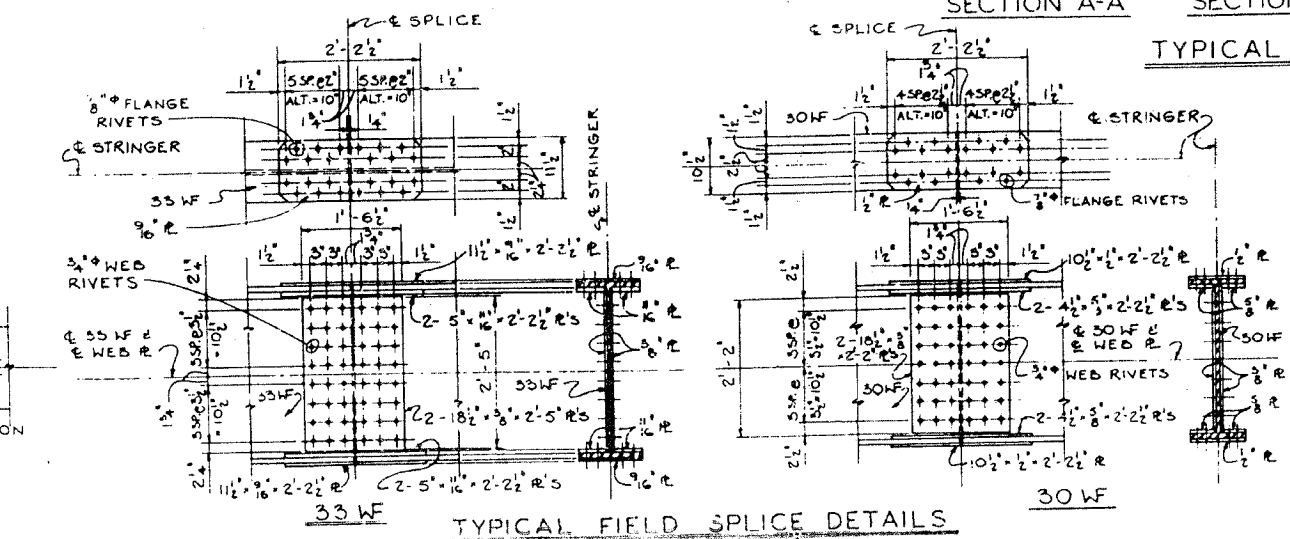
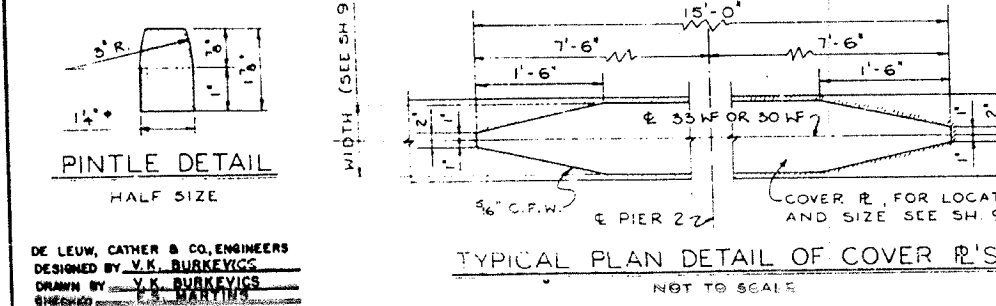
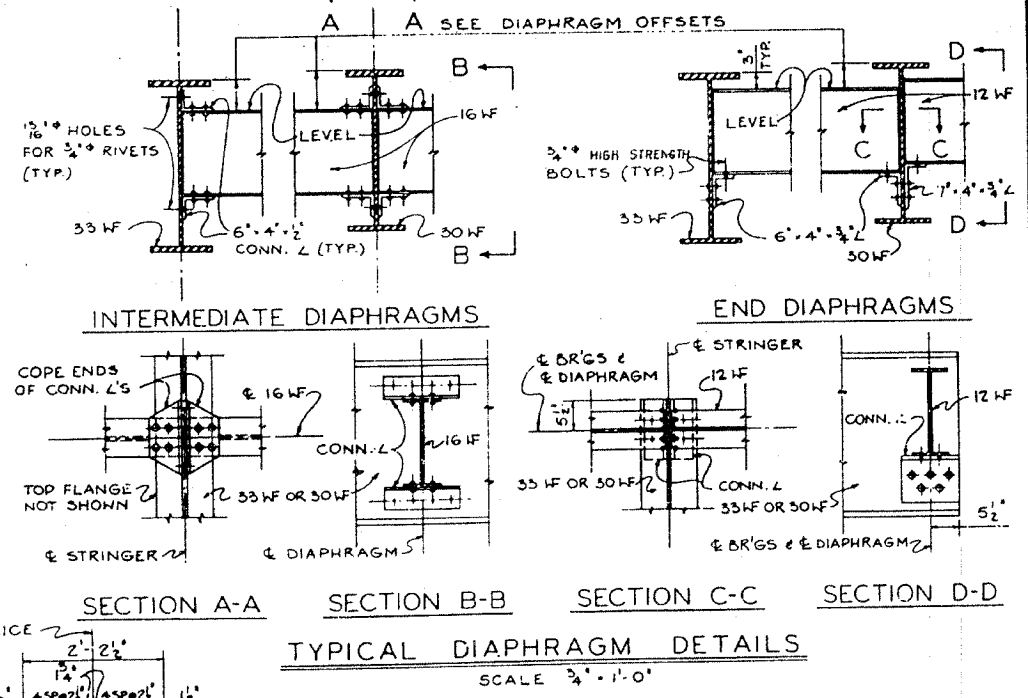
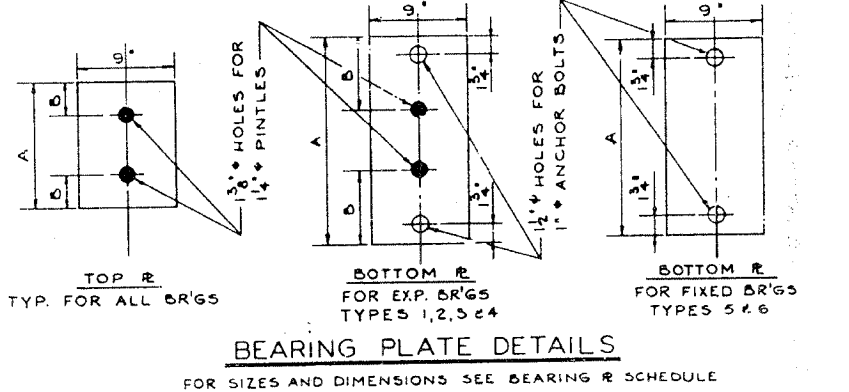


ROUTE NO.	SECTION	SHEET	TOTAL SHEETS	SHEET NO.
F.A.I. 80	37-100-1	BEARY	133	87
FED. ROAD DIV. NO.		ILLINOIS	FEB. 20 1934	



BR'G TYPE	TOP PLATE						BOTTOM PLATE					
	1	2	3	4	5	6	1	2	3	4	5	6
DIM'N	11 1/2"	1'-0 1/2"	11 1/2"	1'-0 1/2"	10 1/2"	11 1/2"	1'-7"	1'-8"	1'-7"	1'-8"	1'-6"	1'-7"
A	3"	5"	3"	5"	2 1/2"	3"	6 3/4"	6 3/4"	6 3/4"	6 3/4"	X	X
B	5"	5"	5"	5"	2 1/2"	3"	6 3/4"	6 3/4"	6 3/4"	6 3/4"	X	X
THICKNESS	1"	1"	1 1/8"	1 1/8"	1"	1 1/4"	1 1/8"	1 1/8"	1 1/8"	1 1/4"	3/4"	1"



ITEM	UNIT	QUANTITY
FURNISHING & ERECTING STRUCTURAL STEEL	POUND	6,654

\* INCLUDES BEARINGS & FILL R'S ONLY. SEE SH. 11 FOR OTHER STEEL.

**SUPERSTRUCTURE-BEARINGS AND MISCELLANEOUS DETAILS**

F.A.I. 80 SECTION 37-100-1  
F.A.I. 80 UNDER G.B.I.-7 (ALT.)

**HENRY COUNTY**

STATION 461+72.02

SCALE: AS NOTED DATE:

DE LEUW, CATHEN & CO., ENGINEERS  
DESIGNED BY V.K. BURKEVICS  
DRAWN BY V.K. BURKEVICS  
CHECKED BY J.S. MARTINS