



# Illinois Department of Transportation

2300 South Dirksen Parkway / Springfield, Illinois / 62764

January 5, 2007

SUBJECT: Various Routes  
Section D2 MCHD – (South) 2007  
Various Counties  
Contract No. 64C42  
Item No. 47, January 19, 2007 Letting  
Addendum A

## NOTICE TO PROSPECTIVE BIDDERS:

Attached is an addendum to the plans or proposal. This addendum involves revised and/or added material.

1. Added sheets 14A – 14E to the Fold Up Plans.

Prime contractors must utilize the enclosed material when preparing their bid and must include any Schedule of Prices changes in their bidding proposal.

Bidders using computer-generated bids are cautioned to reflect any and all Schedule of Prices changes, if involved, into their computer programs.

Very truly yours,

Eric E. Harm  
Interim Bureau Chief  
Bureau of Design and Environment

A handwritten signature in cursive script, reading "Ted B. Walschleger P.E.", with a small "P.E." written in block letters at the end.

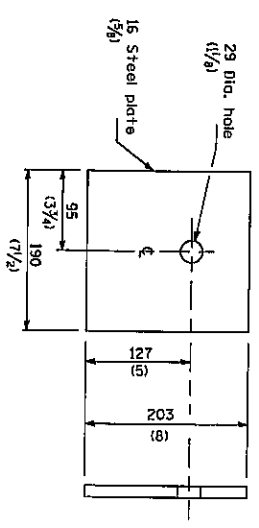
By: Ted B. Walschleger, P. E.  
Engineer of Project Management

cc: J. E. Crowe, Dep. Dir. Highways, Dist 2 Engineer; Roger Driskell;  
Estimates; Design & Environment File

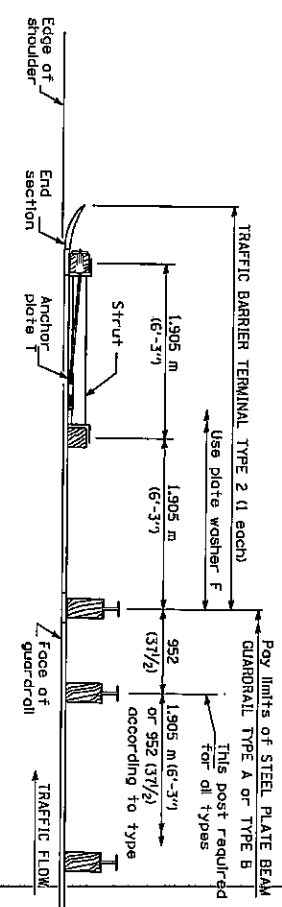
TBW:RS:jc

FIG. 1	SECTION	COUNT	TOTAL SHEETS
			144
THE NEW BRIT. CO. (LIMITED) (REV. AND PROJECT)			

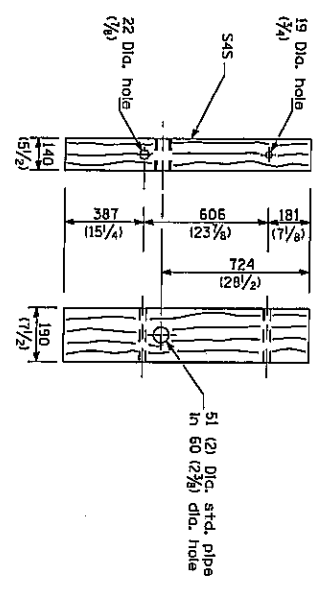
64242



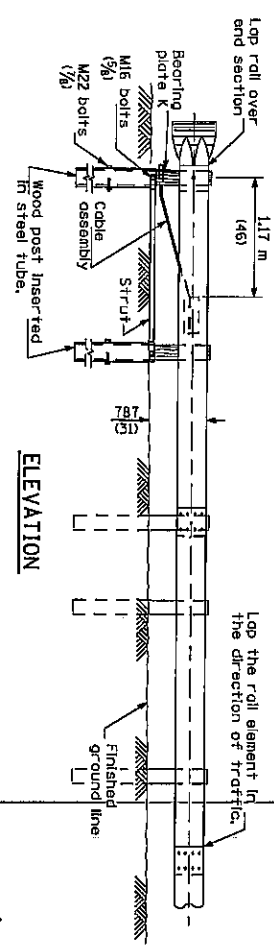
BEARING PLATE K



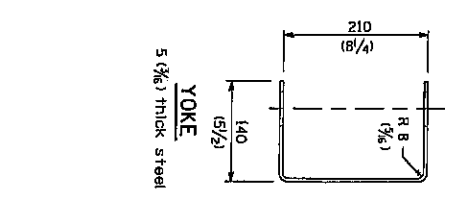
PLAN



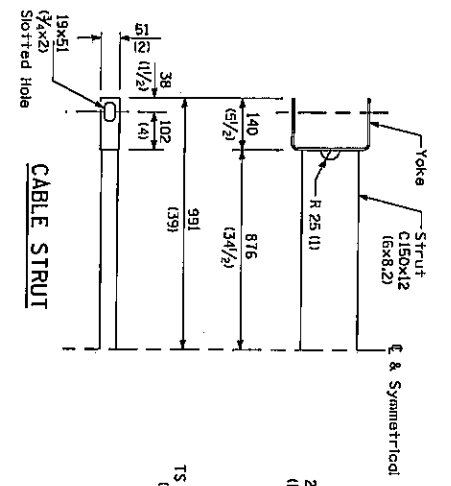
WOOD POST



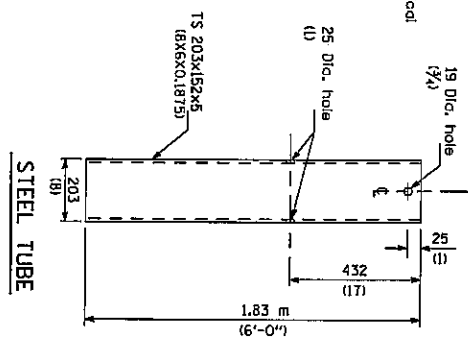
ELEVATION



YOKE



CABLE STRUT



STEEL TUBE

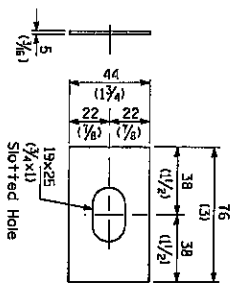


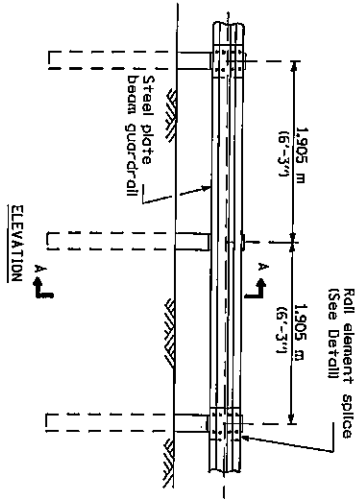
PLATE WASHER F

**GENERAL NOTES**  
 See Standard 630001 for details of guardrail not shown.  
 The bearing plate K shall be held in position by (2) two eight penny nails driven into the post and bent over the top of the plate.  
 All dimensions are in millimeters (Inches) unless otherwise shown.

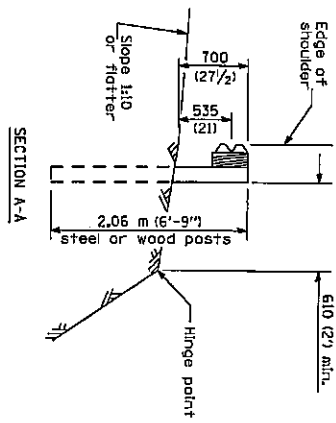
**TRAFFIC BARRIER TERMINAL, TYPE 2**

**DETAIL**

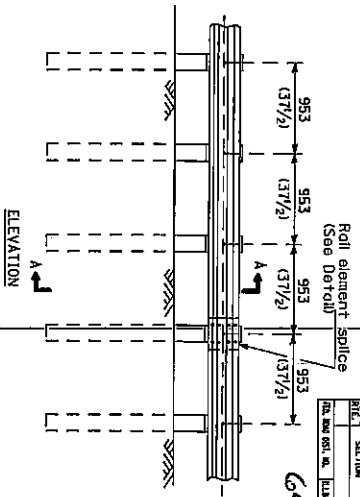
△-Added 01-04-2007



TYPE A  
1,905 m (6'-3") Typical post spacing

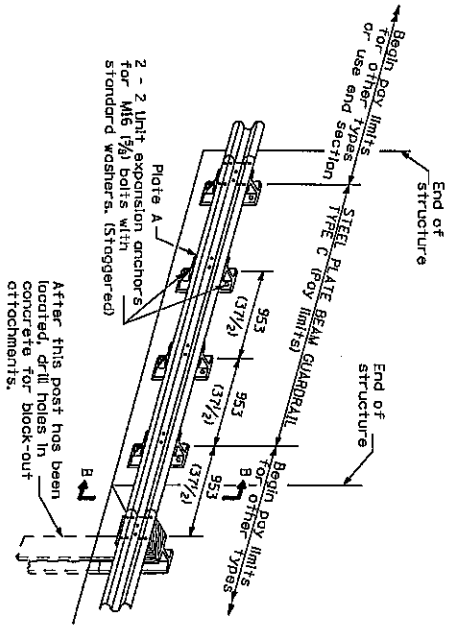


SECTION A-A

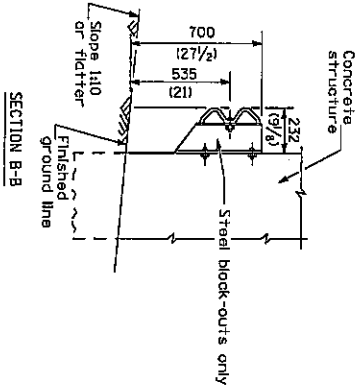


TYPE B  
953 (3'1 1/2") Closed post spacing

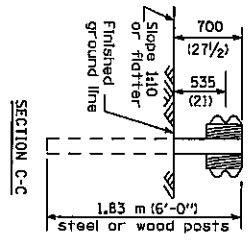
REV	SECTION	QUANTITY	DATE
1	64CA2	1	1/16



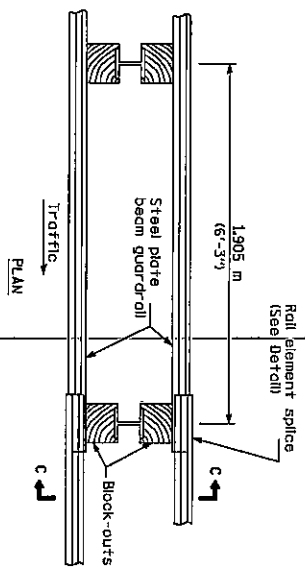
TYPE C  
953 (3'1 1/2") Block-out spacing



SECTION B-B



SECTION C-C



TYPE D  
Double steel plate beam guardrail  
1,905 m (6'-3") Typical post spacing

**GENERAL NOTES**

All slope ratios are expressed as units of vertical displacement (V:H).

All dimensions are in millimeters (inches) unless otherwise shown.

The existing steel posts may be drilled to match the bolt pattern shown herein for the bolt block-out, or a new steel post shall be provided.

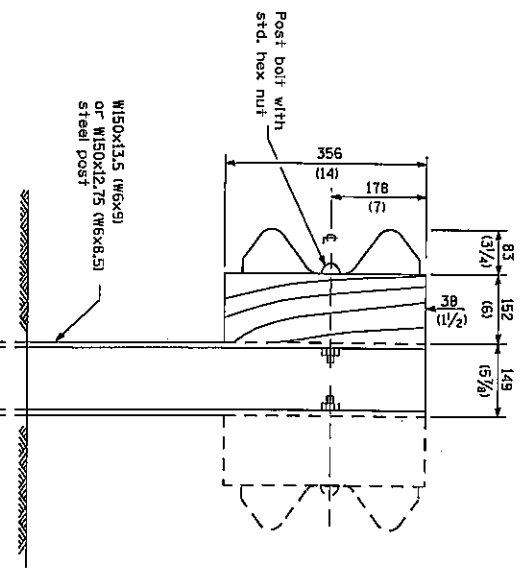
**REMOVE AND REERECT  
STEEL PLATE BEAM GUARDRAIL**  
(Sheet 1 of 4)

**DETAIL**

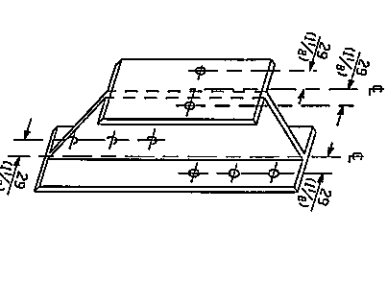
Added 01-04-2007

64CAZ

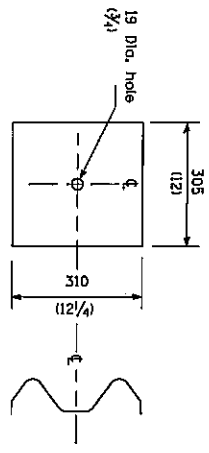
FILE	SECTION	COUNTY	SHEET NO.
64-000-010-01	11/15/01	11/15/01	11/15/01



STEEL POST CONSTRUCTION



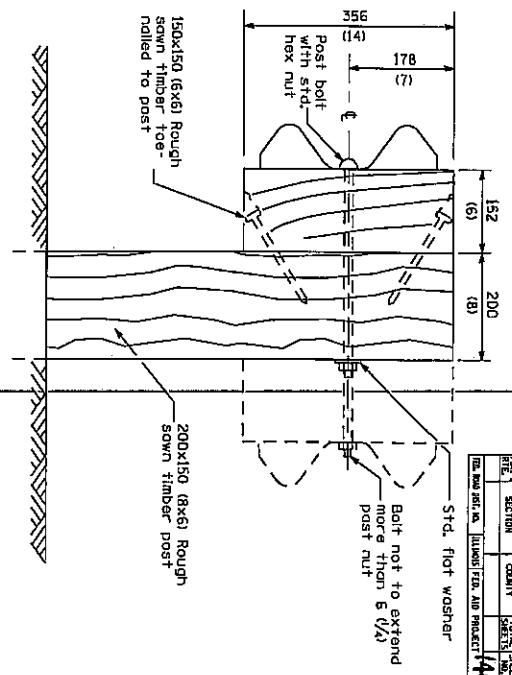
STEEL BLOCK-OUT DETAIL



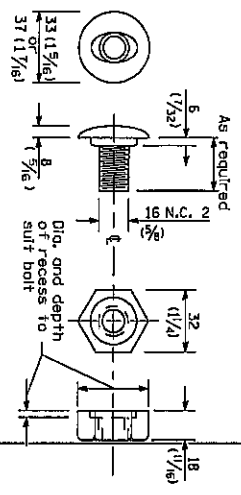
NOTE

Plate A shall be placed between rail element and block-out of non-splice mounting points only when steel block-outs are used.

PLATE A



WOOD POST CONSTRUCTION



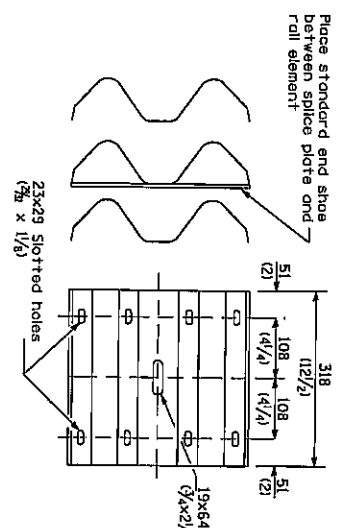
POST OR SPLICE BOLT & NUT

REMOVE AND REERECT  
STEEL PLATE BEAM GUARDRAIL  
DETAIL  
(Sheet 2 of 4)

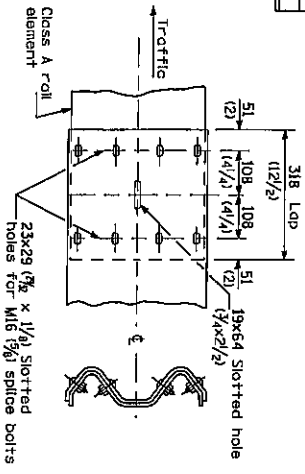
Added 01-04-2007

DATE	SECTION	COUNTY	DISTRICT	SHEET
NO. AND DATE	BY	ILLINOIS	FED. AID PROJECT	1140

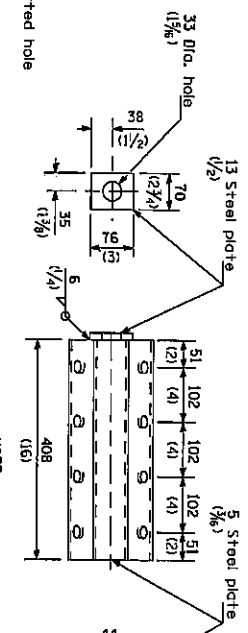
64CAZ



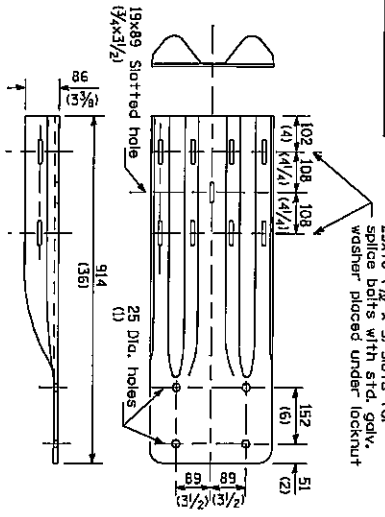
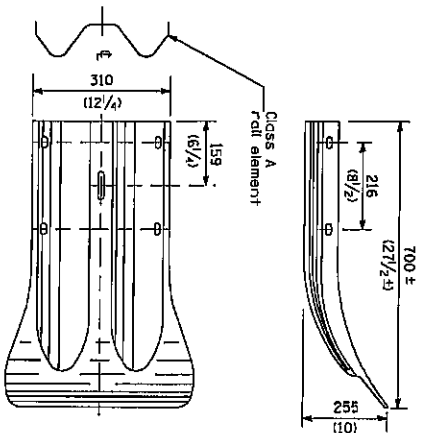
**SPLICE PLATE**



**RAIL ELEMENT SPLICE**

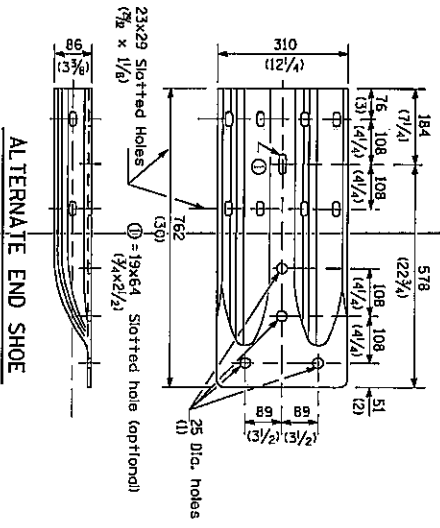


**ANCHOR PLATE T DETAILS**



NOTE

**END SHOE**



REMOVE AND REERECT STEEL PLATE BEAM GUARDRAIL (Sheet 3 of 4)

**DETAIL**

Added 01-04-2007

