



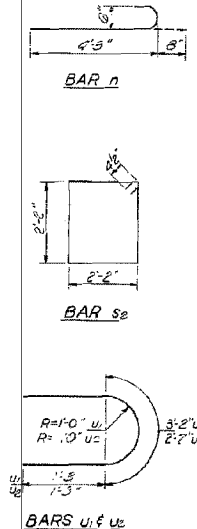
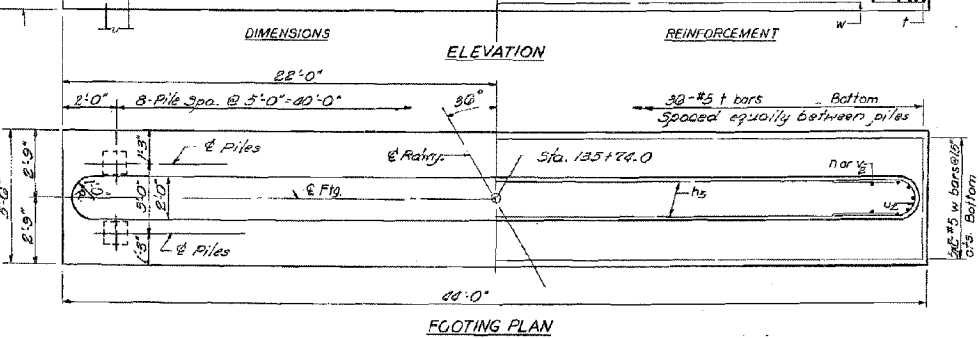
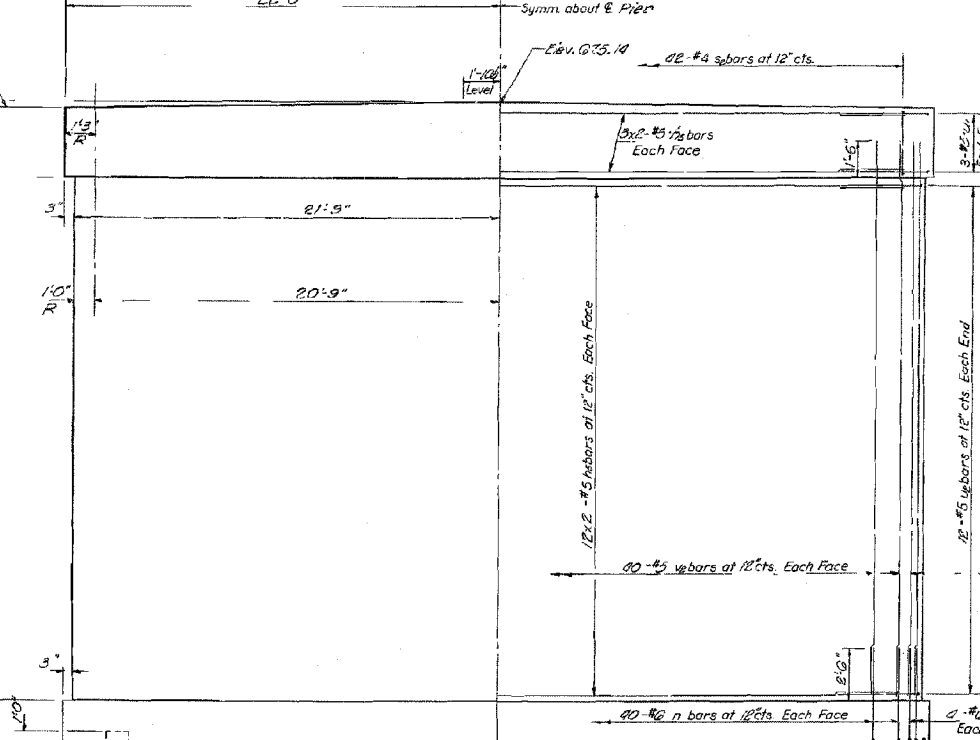
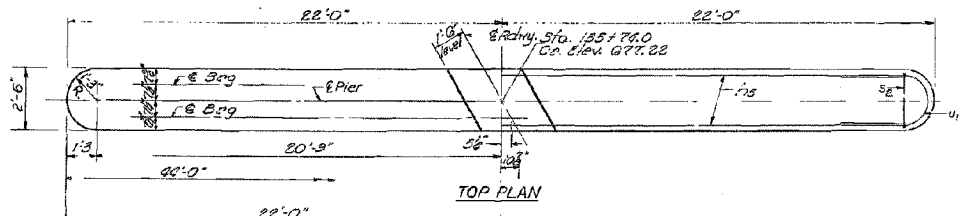
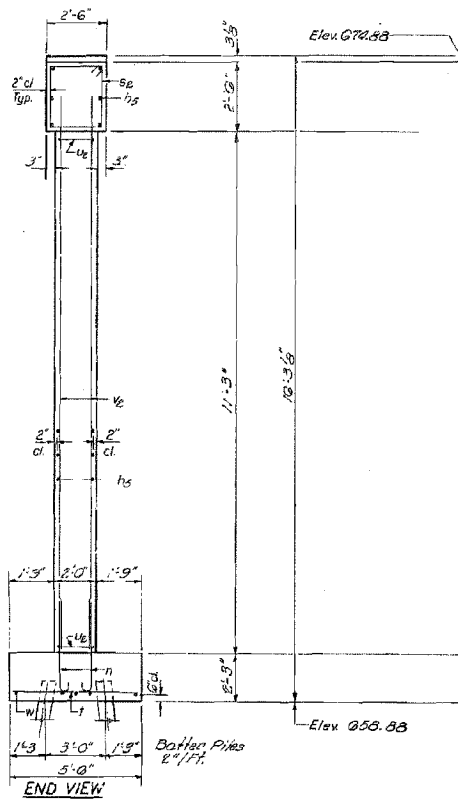
CONTRACT NO. 66647				
FAP RTE	SECTION	COUNTY	TOTAL SHEETS	SHEET NO.
840	123-BR-1	IROQUOIS	39	32
STA.	TO STA.			
FED. ROAD DIST. NO.	ILLINOIS FED. AID PROJECT			

NOTE:  
All edges shall have standard 3/4" chamfer.  
Min. bar size - #4 unless otherwise shown.

**FILE DATA**  
Type: Concrete  
Capacity: 25 Tons  
Est. Length: 23 FT.  
No. Piles: 18 including 1 test pile

STATE OF ILLINOIS  
DEPARTMENT OF TRANSPORTATION  
DIVISION OF HIGHWAYS

ROUTE NO.	SECTION	COUNTY	TOTAL SHEETS	SHEET NO.
840	123-BR-1	IROQUOIS	39	32
SHEETS				



**BILL OF MATERIAL**

Bar	No.	Size	Length	Shape
hs	60	#5	21'-5"	—
n	35	#6	6'-11"	—
se	22	#4	5'-5"	□
t	30	#5	3'-5"	—
w	6	#5	3'-8"	—
ue	25	#5	3'-11"	—
ve	28	#5	3'-0"	—
w	10	#5	22'-6"	—
Class X Concrete		Cu Yds.	105.8	
Reinforcement Bars		Lbs.	2000	
Concrete Piles		Lbs. EA	3.91	
Test Piles (Conc)		Each	1	

PIER  
S.B.I. RT 49 SEC. 123-BR  
IROQUOIS COUNTY  
STA. 155+74.0

DESIGNED: J.M.P.  
CHECKED: J.M.P.  
DRAWN: J. SCHNEIDER  
CHECKED: J.M.P.

EXAMINED: [Signature]  
PASSED: [Signature]  
APPROVED: [Signature]

DEC 14 '72

**ESCA**  
CONSULTANTS, INC.

DESIGNED BY: MTD 08/06  
DRAWN BY: HAG 08/06  
CHECKED BY: ELH 08/06  
APPROVED BY: RDP 08/06

FOR INFORMATION ONLY

EXISTING STRUCTURE PLANS  
FAP RTE 840 (IL 49)  
SECTION 123-BR-1  
IROQUOIS COUNTY