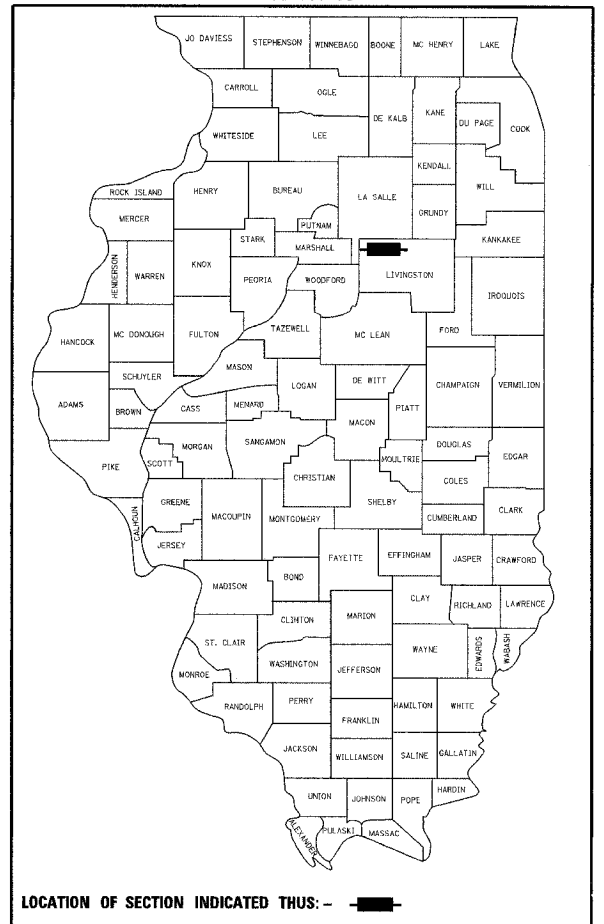


F.A.P. RTE.	SECTION	COUNTY	TOTAL SHEETS	SHEET NO.
68	102-BR	LIVINGSTON	38	1

CONTRACT NO. 66666

P-93-037-04  
D-93-039-05



LOCATION OF SECTION INDICATED THUS: -

**FUNCTIONAL CLASSIFICATION - RURAL MINOR ARTERIAL**  
**DESIGN SPEED = 55 MPH**  
**POSTED SPEED = 55 MPH**  
**2006 ADT = 1,750**  
**2008 ADT = 1,850**  
**P.V. = 89.4%    S.U. = 7.0%    M.U. = 3.6%**

STATE OF ILLINOIS  
DEPARTMENT OF TRANSPORTATION  
DIVISION OF HIGHWAYS

SUBMITTED October 27, 2006  
David M. Broviak  
DEPUTY DIRECTOR OF HIGHWAYS, REGION ENGINEER

December 8, 2006  
Eric E. Harn  
INTERIM ENGINEER OF DESIGN AND ENVIRONMENT

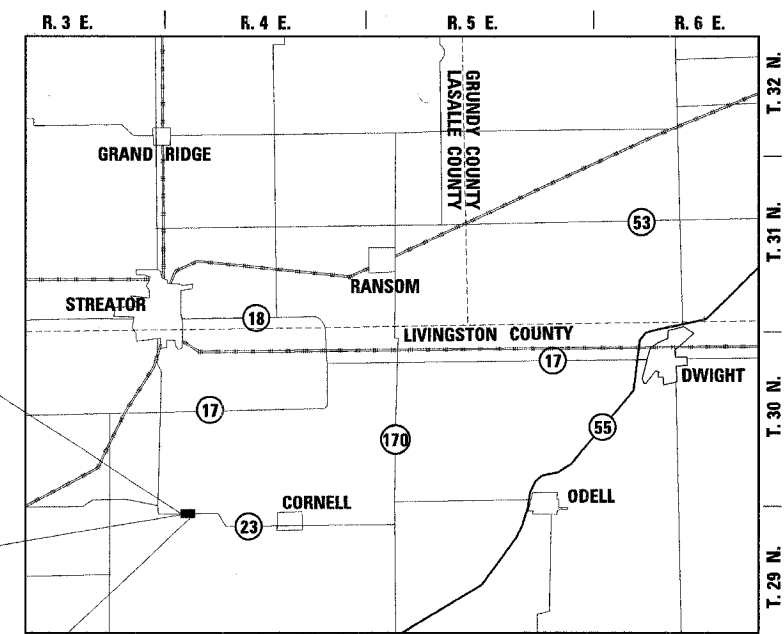
December 8, 2006  
Milton R. Sear, P.E.  
DIRECTOR OF HIGHWAYS, CHIEF ENGINEER

**PRINTED BY THE AUTHORITY OF THE STATE OF ILLINOIS**

STATE OF ILLINOIS  
DEPARTMENT OF TRANSPORTATION  
DIVISION OF HIGHWAYS  
**PLANS FOR PROPOSED HIGHWAY IMPROVEMENT**

FAP ROUTE 68 (ILLINOIS ROUTE 23)  
SECTION 102 BR  
PROJECT BRF-0068 (101)  
LIVINGSTON COUNTY

C-93-058-05  
BRIDGE REPLACEMENT AT MOLE CREEK



**LOCATION MAP NOT TO SCALE**  
**GROSS & NET LENGTH = 665 FT = 0.126 MILES**

**rjngroup**  
Excellence through Ownership  
200 West Front Street  
Wheaton, IL 60187  
License # 184-000813

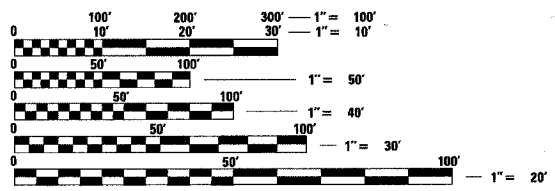
**INDEX OF SHEETS**

- COVER SHEET
- GENERAL NOTES & COMMITMENTS
- SUMMARY OF QUANTITIES
- TYPICAL SECTIONS
- SCHEDULE OF QUANTITIES
- ALIGNMENT, TIES, AND BENCHMARKS
- 7-8. DETOUR PLANS
- PLAN AND PROFILE
- EROSION CONTROL, LANDSCAPING & PAVEMENT MARKING PLAN
- 11-27A. BRIDGE PLANS
28. DISTRICT DETAILS
- 29-37. CROSS SECTIONS

**IDOT STANDARDS**

- |           |   |
|-----------|---|
| 000001-04 | STANDARD SYMBOLS, ABBREVIATIONS AND PATTERNS                                  |
| 280001-03 | TEMPORARY EROSION CONTROL SYSTEMS   |
| 420401-05 | BRIDGE APPROACH PAVEMENT  |
| 482001-01 | HMA SHOULDER ADJACENT TO FLEXIBLE PAVEMENT                                    |
| 482011-02 | HMA SHLD. STRIPS/SHLDS. WITH RESURFACING OR WIDENING AND RESURFACING PROJECTS |
| 515001-02 | NAME PLATE FOR BRIDGES  |
| 601101    | CONCRETE HEADWALL FOR PIPE DRAIN  |
| 630001-07 | STEEL PLATE BEAM GUARDRAIL  |
| 630201-04 | PCC/HMA STABILIZATION AT STEEL PLATE BEAM GUARDRAIL                           |
| 630301-04 | SHOULDER WIDENING FOR TYPE 1 (SPECIAL) GUARDRAIL TERMINALS                    |
| 631031-06 | TRAFFIC BARRIER TERMINAL, TYPE 6  |
| 635006-02 | REFLECTOR AND TERMINAL MARKER PLACEMENT                                       |
| 635011-01 | REFLECTOR MARKER AND MOUNTING DETAILS   |
| 702001-06 | TRAFFIC CONTROL DEVICES   |
| 720001    | SIGN PANEL MOUNTING DETAILS   |
| 720006-01 | SIGN PANEL ERECTION DETAILS   |
| 780001-01 | TYPICAL PAVEMENT MARKINGS   |
| 781001-02 | TYPICAL APPLICATIONS RAISED REFLECTIVE PAVEMENT MARKERS                       |

MICROFILMED \_\_\_\_\_  
REEL NUMBER \_\_\_\_\_  
AWARDED \_\_\_\_\_  
RESIDENT ENGINEER \_\_\_\_\_  
AS BUILT CHANGES WERE MADE ON THE FOLLOWING SHEETS \_\_\_\_\_



FULL SIZE PLANS HAVE BEEN PREPARED USING STANDARD ENGINEERING SCALES. REDUCED SIZED PLANS WILL NOT CONFORM TO STANDARD SCALES. IN MAKING MEASUREMENTS ON REDUCED PLANS, THE ABOVE SCALES MAY BE USED.

J.U.L.I.E.  
JOINT UTILITY LOCATION INFORMATION FOR EXCAVATION  
1-800-892-0123

DISTRICT 3 NO. (815) 434-6131  
PROJECT ENGINEER: DAVID BROVIAK  
UNIT CHIEF: BRAD DUNCAN  
TOWNSHIP: AMITY

**CONTRACT NO. 66666**