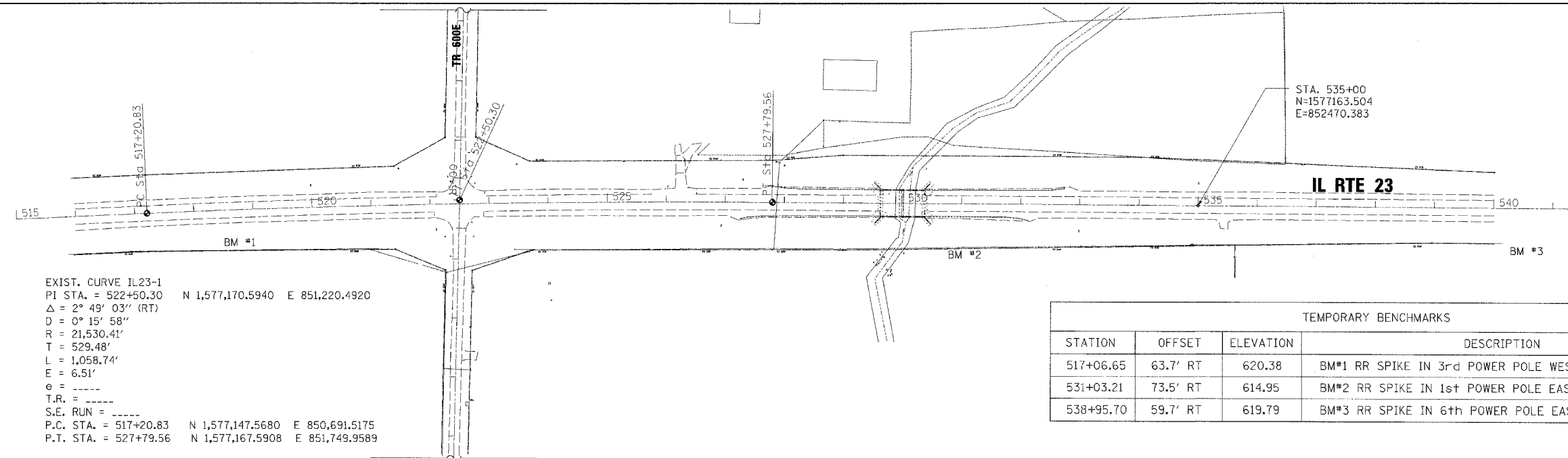
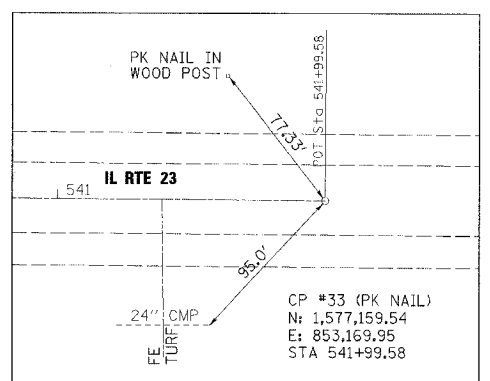
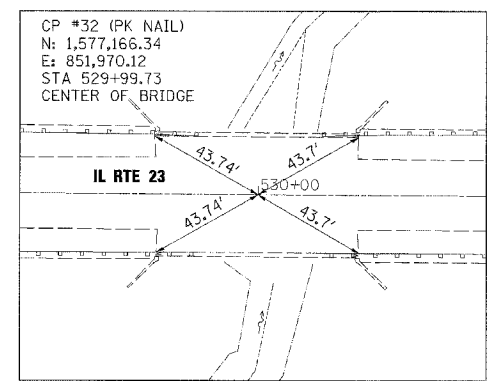
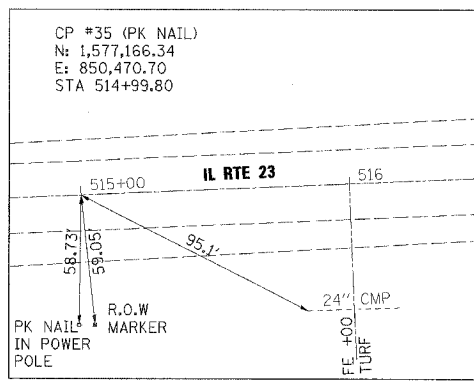
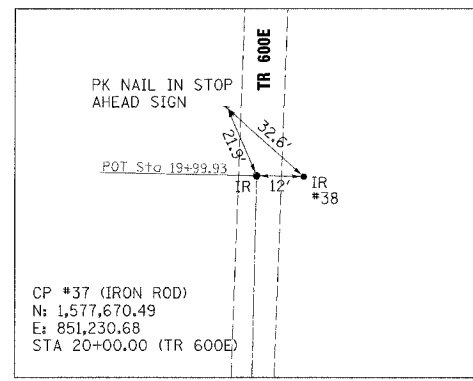
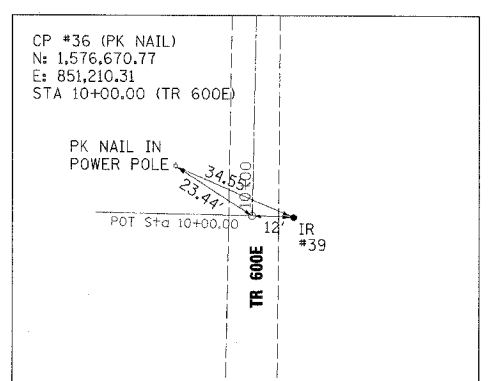
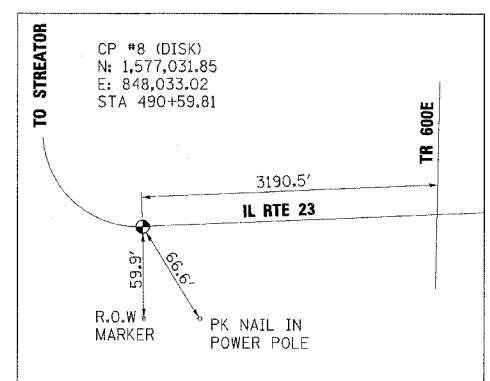
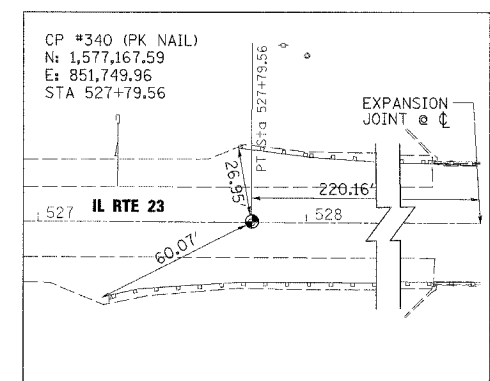
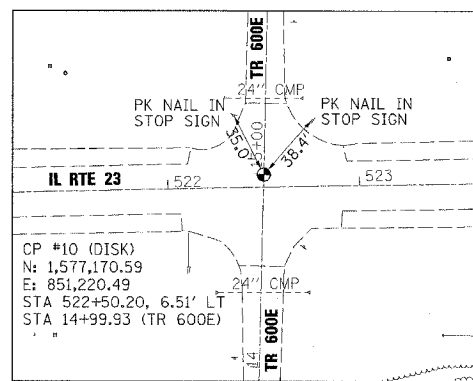
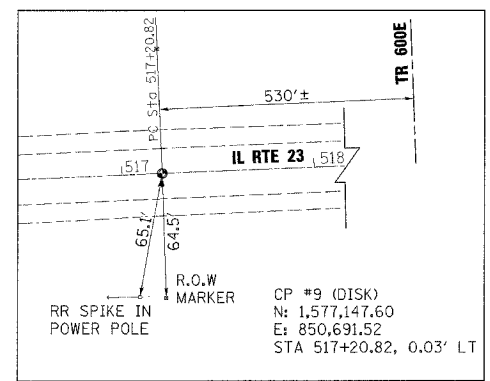


F.A.P. RTE.	SECTION	COUNTY	TOTAL SHEETS	SHEET NO.
68	102 BR	LIVINGSTON	37	6
FED. ROAD DIST. NO. 7 ILLINOIS FED. AID PROJECT				

CONTRACT NO. 66666



TEMPORARY BENCHMARKS			
STATION	OFFSET	ELEVATION	DESCRIPTION
517+06.65	63.7' RT	620.38	BM#1 RR SPIKE IN 3rd POWER POLE WEST OF TR 600E
531+03.21	73.5' RT	614.95	BM#2 RR SPIKE IN 1st POWER POLE EAST OF MOLE CREEK
538+95.70	59.7' RT	619.79	BM#3 RR SPIKE IN 6th POWER POLE EAST OF MOLE CREEK



rjngroup
Excellence through Ownership
200 West Front Street
Wheaton, IL 60187

REVISIONS	
NAME	DATE

ILLINOIS DEPARTMENT OF TRANSPORTATION
F.A.P. ROUTE 68 (IL 23)
ALIGNMENT, TIES & BENCHMARKS
SCALE: VERT. HORIZ. 1" = 100'
DATE: OCTOBER 20, 2006
DRAWN BY: NC/JT/SR
CHECKED BY: DWB

I:\20\2006\05\16 AM k:\1\2006\02\0000\0206602-Align&Ties.dgn