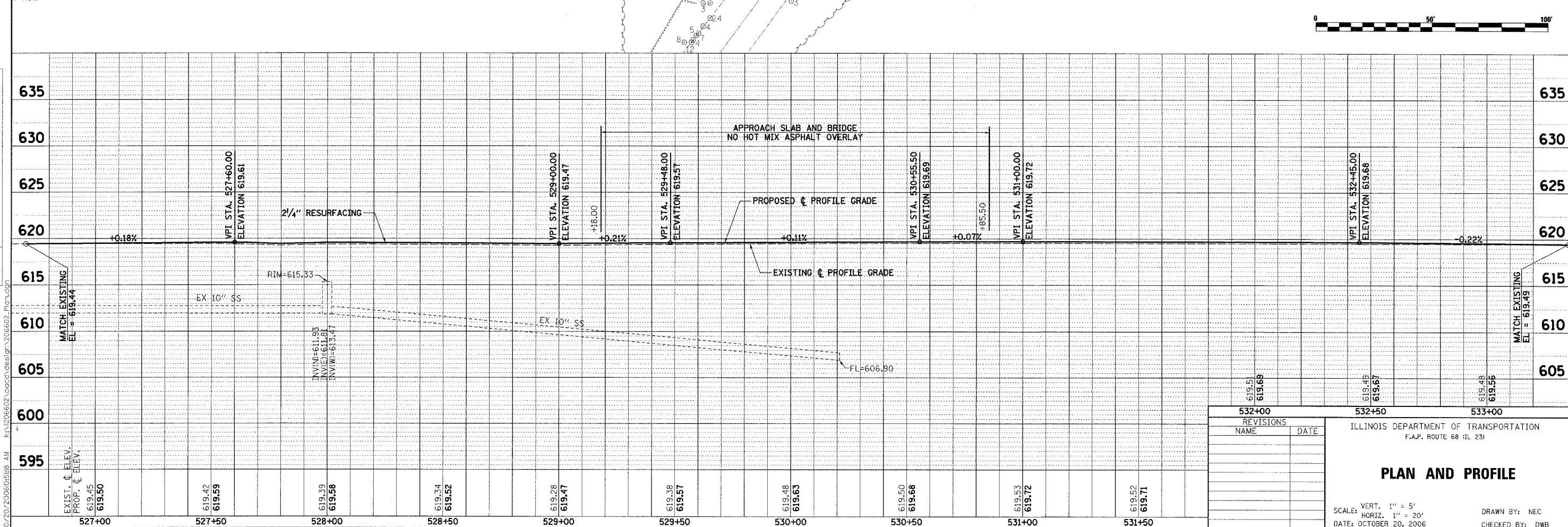
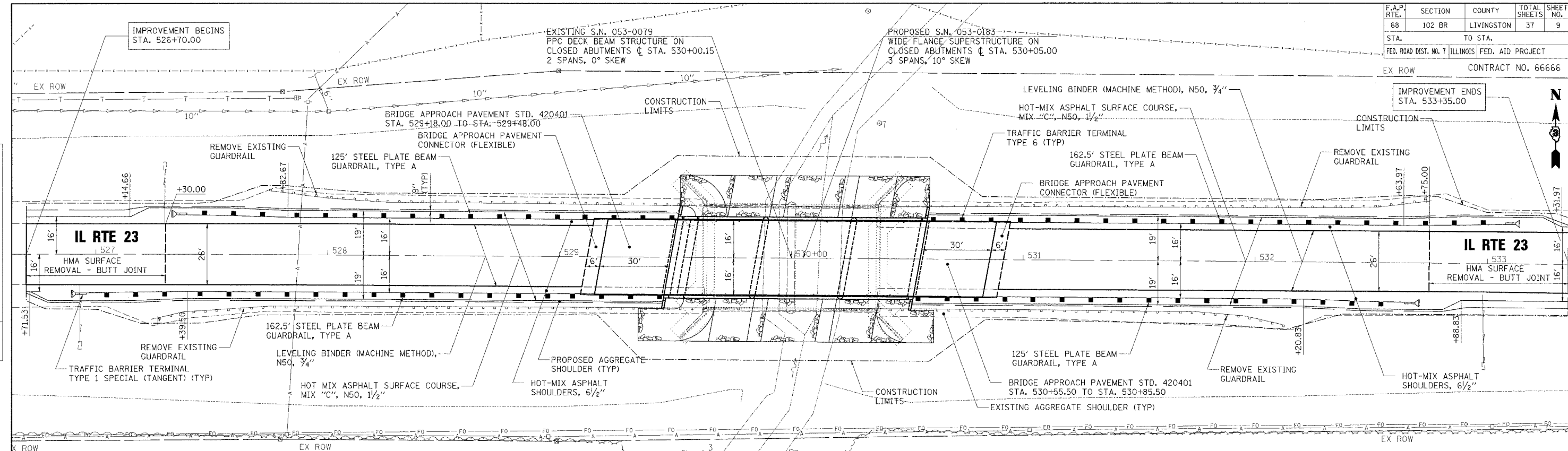


F.A.P. RTE.	SECTION	COUNTY	TOTAL SHEETS	SHEET NO.
68	102 BR	LIVINGSTON	37	9
STA.	TO STA.			
FED. ROAD DIST. NO. 7 ILLINOIS			FED. AID PROJECT	
			CONTRACT NO. 66666	



PLAN	SURVEYED	BY	DATE
	DESIGNED		
	CHECKED		
	IN CHARGE		
	NOTE BOOK		
	NO.		

PROFILE	SURVEYED	BY	DATE
	DESIGNED		
	CHECKED		
	IN CHARGE		
	NOTE BOOK		
	NO.		

532+00		532+50		533+00	
REVISIONS	NAME	DATE			
ILLINOIS DEPARTMENT OF TRANSPORTATION F.A.P. ROUTE 68 (IL 23)					
<b>PLAN AND PROFILE</b>					
SCALE: VERT. 1" = 5' HORIZ. 1" = 20'			DRAWN BY: NEC CHECKED BY: DWB		
DATE: OCTOBER 20, 2006					

07/20/2006 09:51:08 AM K:\1206602\board\design\206602\_Plan.dgn