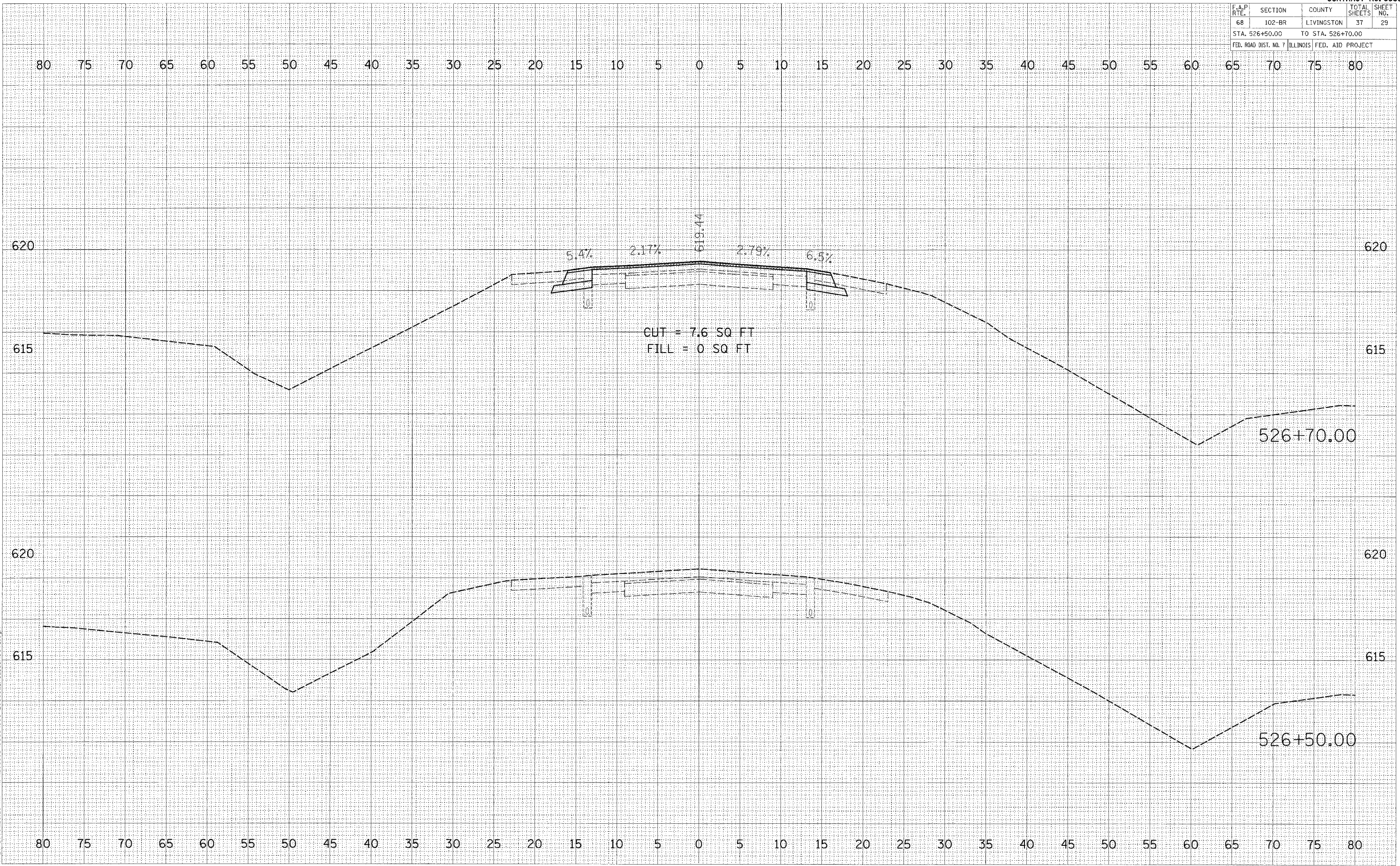


F.A.P. RTE.	SECTION	COUNTY	TOTAL SHEETS	SHEET NO.
68	102-BR	LIVINGSTON	37	29
STA. 526+50.00		TO STA. 526+70.00		
FED. ROAD DIST. NO. 7		ILLINOIS		FED. AID PROJECT



DATE	
BY	
FINAL SURVEY	
NOTED	
AREAS CHECKED	
NO.	

DATE	
BY	
ORIGINAL SURVEY	
NOTED	
AREAS CHECKED	
NO.	

10/20/2006 12:29 AM K:\12066602\Cadd\Geo 2066602.XS_5_Sheets.dgn