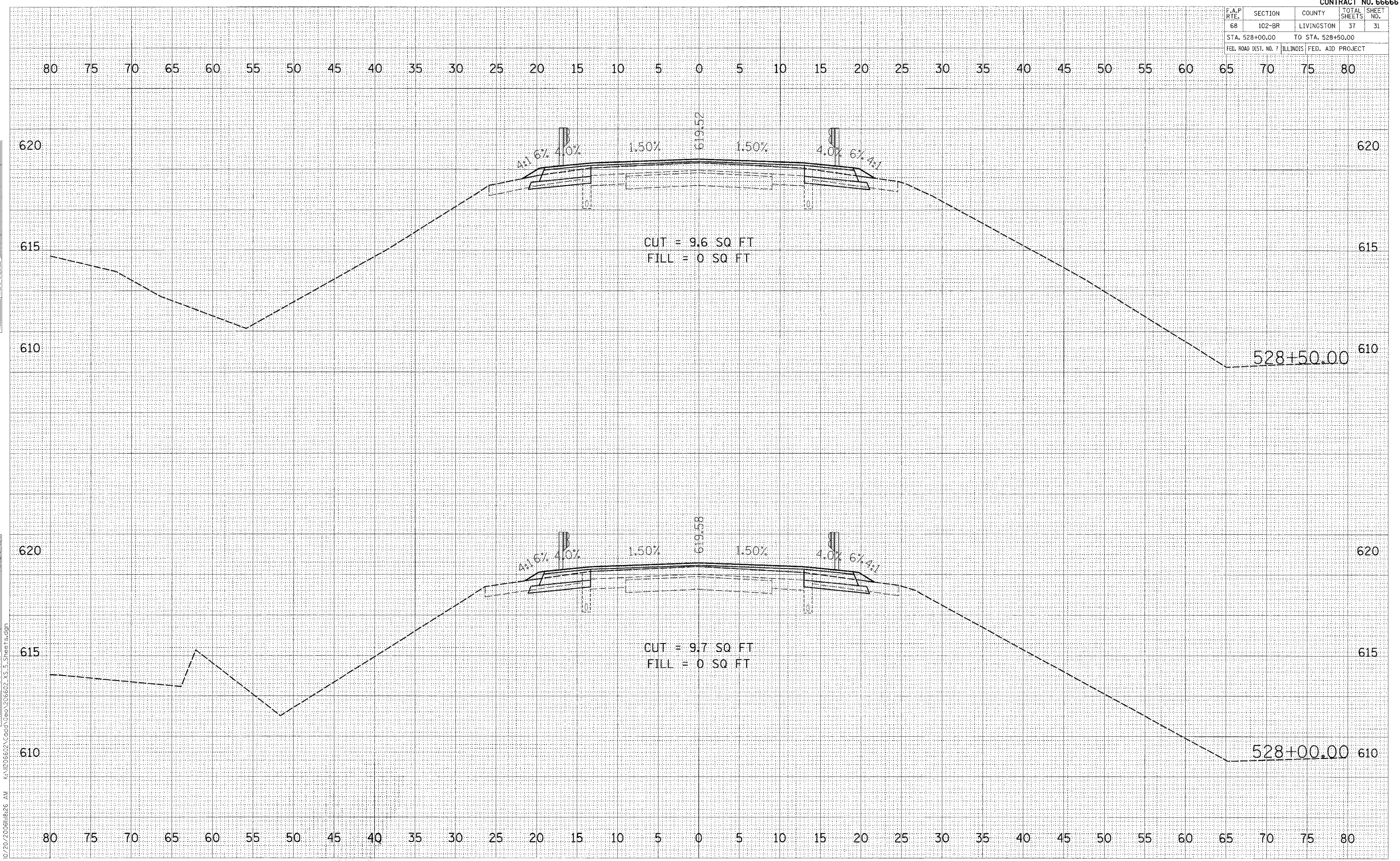


F.A.P. R.T.E.	SECTION	COUNTY	TOTAL SHEETS	SHEET NO.
68	102-BR	LIVINGSTON	37	31
STA. 528+00.00		TO STA. 528+50.00		
FED. ROAD DIST. NO. 7 ILLINOIS FED. AID PROJECT				

DATE: \_\_\_\_\_  
 BY: \_\_\_\_\_  
 SURVEYED: \_\_\_\_\_  
 PLOTTED: \_\_\_\_\_  
 NOTE BOOK: \_\_\_\_\_  
 AREAS CHECKED: \_\_\_\_\_  
 NO.: \_\_\_\_\_

DATE: \_\_\_\_\_  
 BY: \_\_\_\_\_  
 SURVEYED: \_\_\_\_\_  
 PLOTTED: \_\_\_\_\_  
 NOTE BOOK: \_\_\_\_\_  
 AREAS CHECKED: \_\_\_\_\_  
 NO.: \_\_\_\_\_



9/20/2008 10:26 AM K:\1205602\Cadd\Goo\206602\_XS\_5\_Sheets.dgn