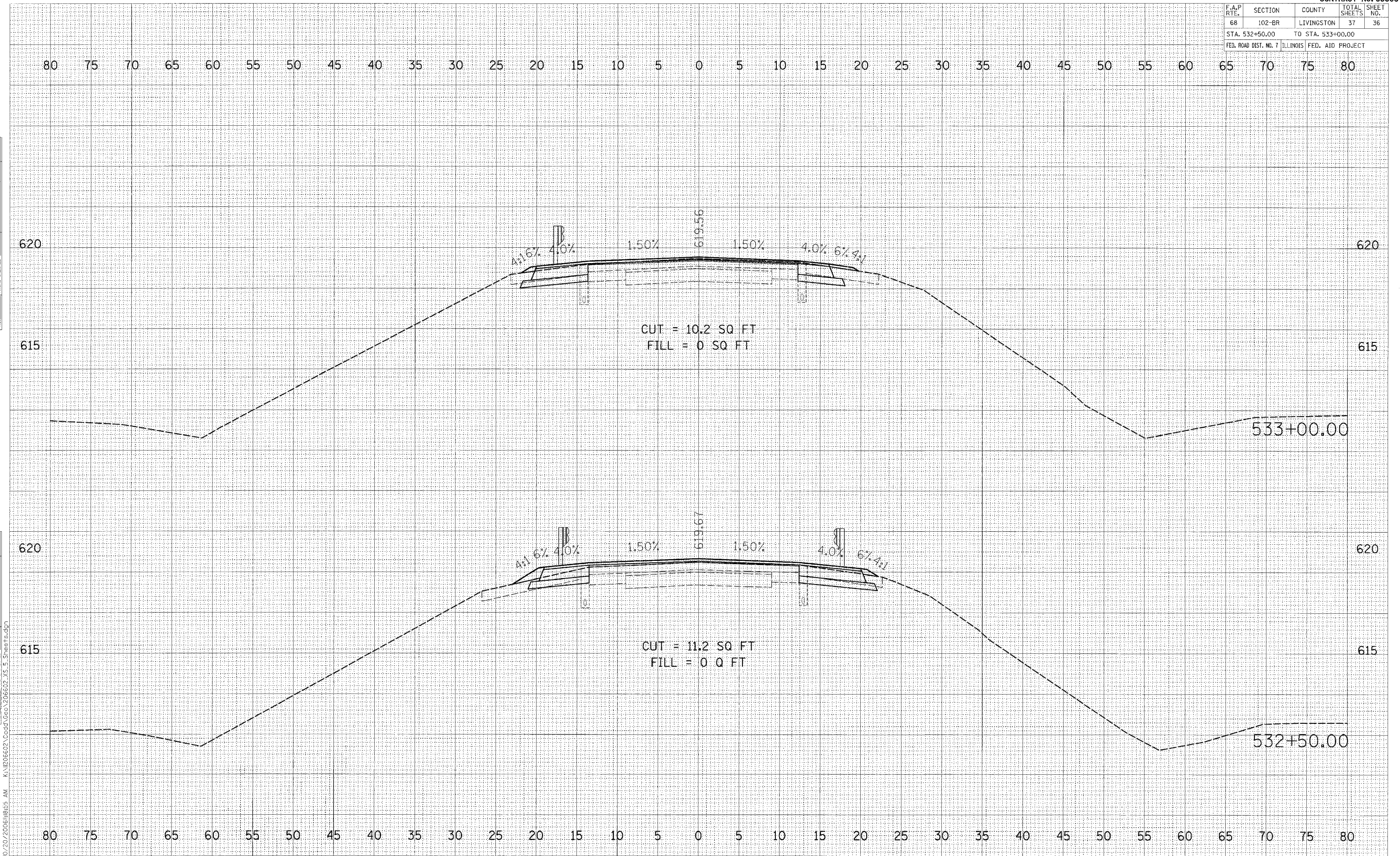


F.A.P. RTE.	SECTION	COUNTY	TOTAL SHEETS	SHEET NO.
68	102-BR	LIVINGSTON	37	36
STA. 532+50.00		TO STA. 533+00.00		
FED. ROAD DIST. NO. 7 ILLINOIS FED. AID PROJECT				

DATE	
BY	
ORIGINAL SURVEY	
PLOTTED	
NOTE BOOK	
AREAS CHECKED	
NO.	

DATE	
BY	
ORIGINAL SURVEY	
PLOTTED	
NOTE BOOK	
AREAS CHECKED	
NO.	



10/20/2006 11:55 AM K:\1206602\Cood\Gco\1206602\_XS\_5\_Sheets.dgn