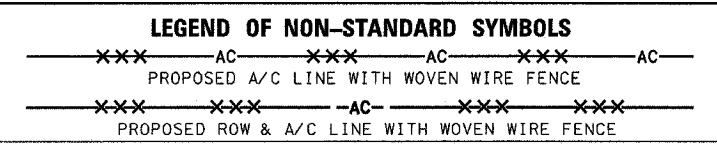


F.A.P. RTE.	SECTION	COUNTY	TOTAL SHEETS	SHEET NO.
315	(34-6.55-1)	HANCOCK/McDONOUGH	433	64
STA.	TO STA.			
FED. ROAD DIST. NO.	ILLINOIS	FED. AID PROJECT	STATE CONTRACT NO. 68206	

PROP. CURVE SD01-1
 PI STA. = 502+27.98
 $\Delta = 11^\circ 01' 17''$ (RT)
 $D = 19^\circ 45' 26''$
 $R = 290.00'$
 $L = 27.98'$
 $E = 55.78'$
 $e = 1.35'$
 $\theta = NC$
 T.R. = N/A
 S.E. RUN = N/A
 P.C. STA = 502+00.00
 P.T. STA = 502+55.79



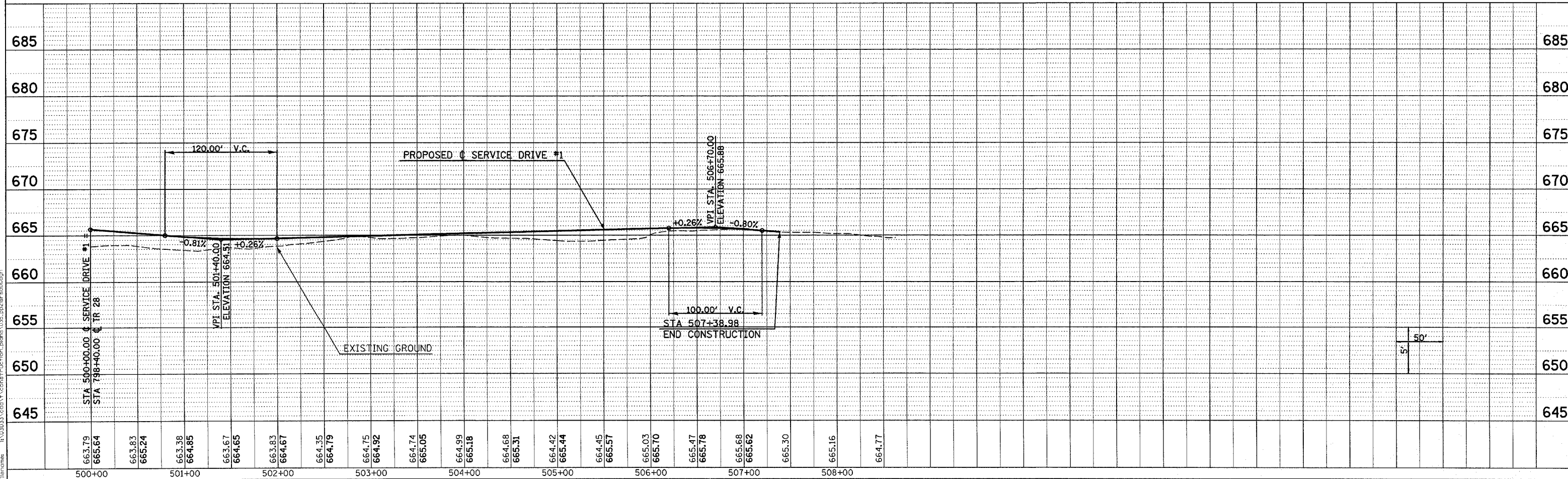
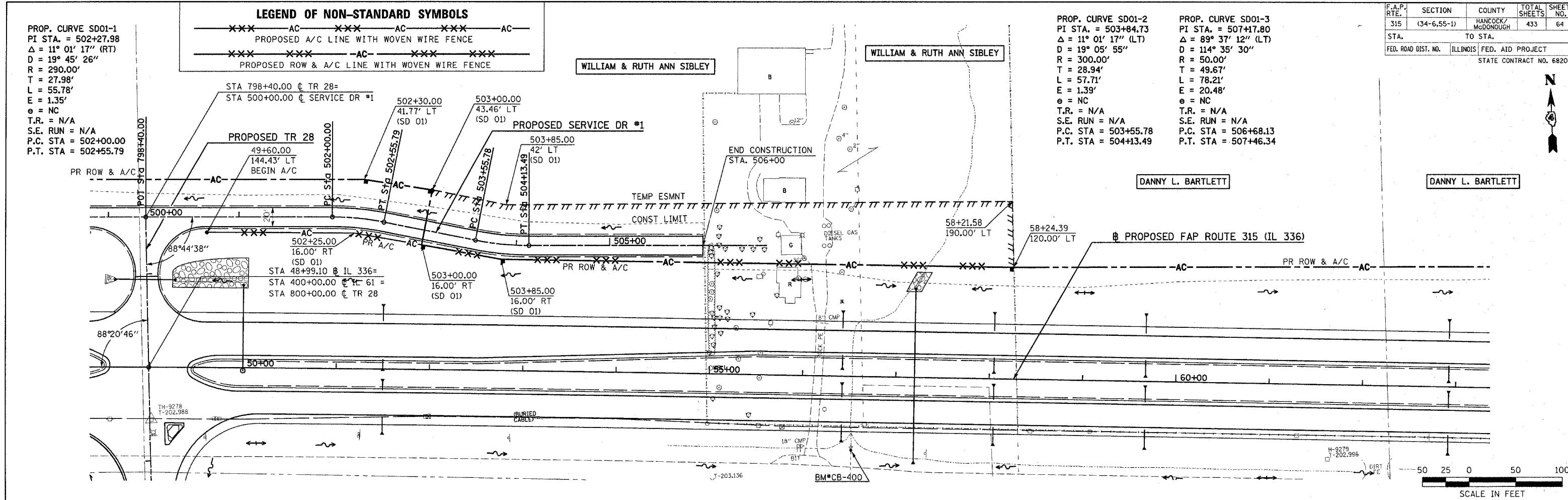
PROP. CURVE SD01-2
 PI STA. = 503+84.73
 $\Delta = 11^\circ 01' 17''$ (LT)
 $D = 19^\circ 05' 55''$
 $R = 300.00'$
 $L = 28.94'$
 $E = 57.71'$
 $e = 1.39'$
 $\theta = NC$
 T.R. = N/A
 S.E. RUN = N/A
 P.C. STA = 503+55.78
 P.T. STA = 504+13.49

PROP. CURVE SD01-3
 PI STA. = 507+17.80
 $\Delta = 89^\circ 37' 12''$ (LT)
 $D = 114^\circ 35' 30''$
 $R = 50.00'$
 $L = 49.67'$
 $E = 78.21'$
 $e = NC$
 T.R. = N/A
 S.E. RUN = N/A
 P.C. STA = 506+68.13
 P.T. STA = 507+46.34

DATE	
BY	
DATE	
BY	
DATE	
BY	
DATE	
BY	

DATE	
BY	
DATE	
BY	
DATE	
BY	
DATE	
BY	

Plot Date: 7/18/2006
 Plot Time: 3:25:23 PM
 Plotted By: bcarimid
 File Name: I:\03033\ceda\construction\pans\035.pn2\pans04.dgn



ROADWAY PLAN & PROFILE - SERVICE DRIVE #1