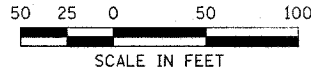
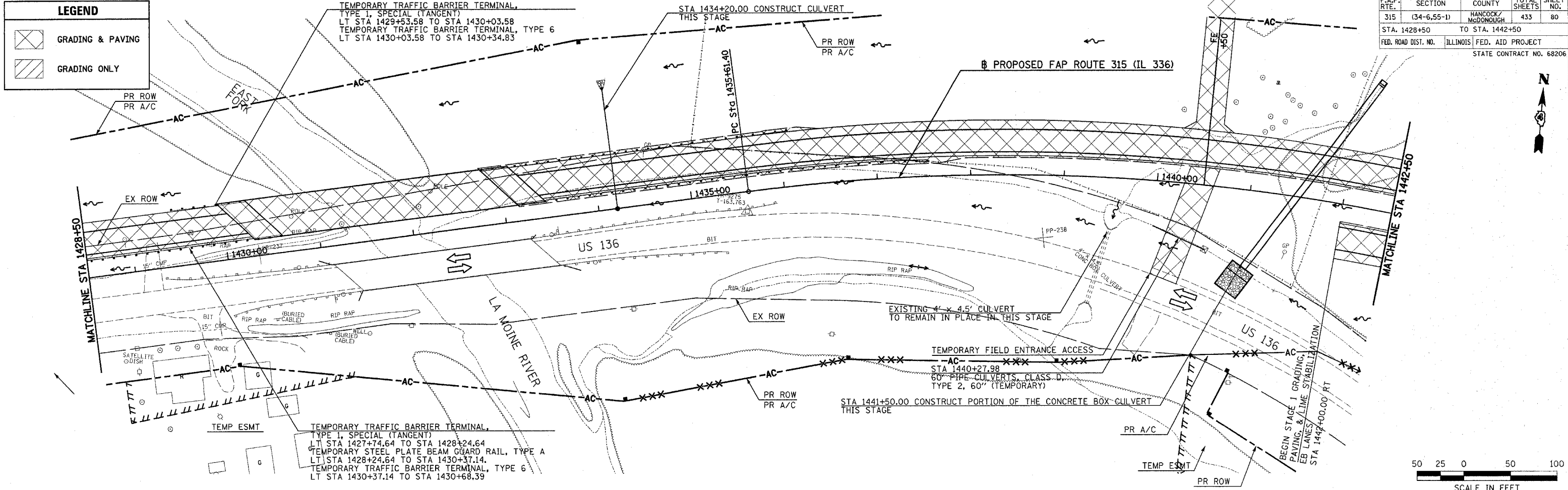


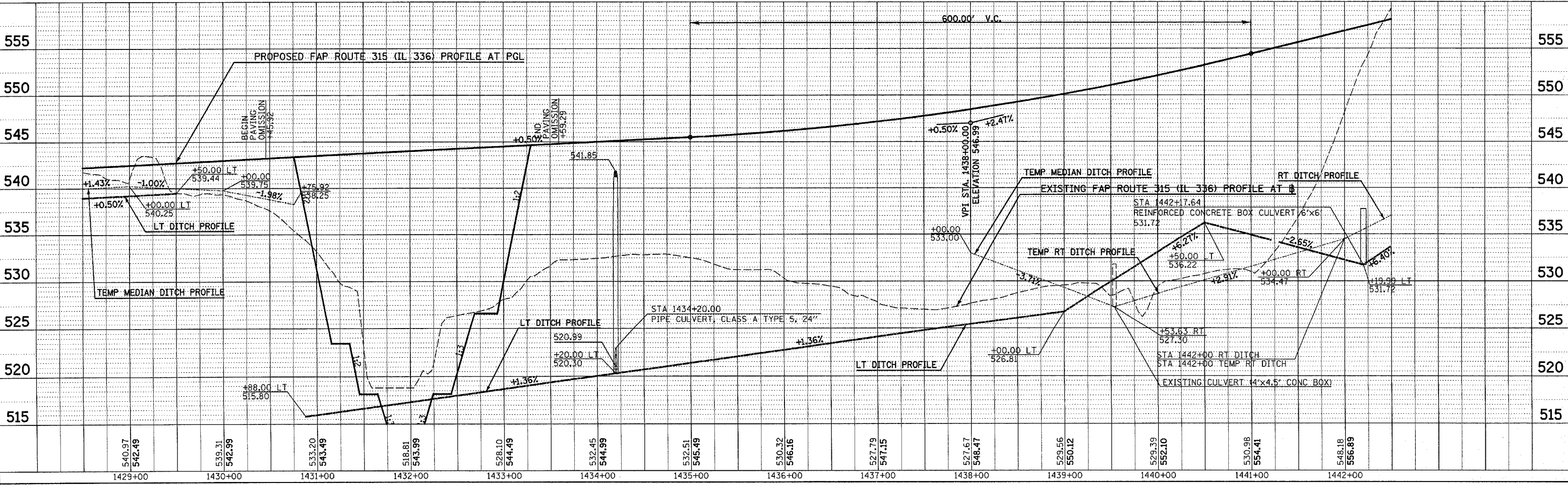
F.A.P. RTE.	SECTION	COUNTY	TOTAL SHEETS	SHEET NO.
315	(34-6,55-1)	HANCOCK/McDONOUGH	433	80
STA. 1428+50		TO STA. 1442+50		
FED. ROAD DIST. NO.		ILLINOIS FED. AID PROJECT		
STATE CONTRACT NO. 68206				

LEGEND	
	GRADING & PAVING
	GRADING ONLY



DATE	
BY	
REVISION	
NO.	
DATE	
BY	
REVISION	
NO.	
DATE	
BY	
REVISION	
NO.	

DATE	
BY	
REVISION	
NO.	
DATE	
BY	
REVISION	
NO.	
DATE	
BY	
REVISION	
NO.	



Plot Date: 7/18/2006
 Plot Time: 3:25:59 PM
 Plotter: bscmndt
 File Name: I:\03033\cd\1\constr\action_plans\051_csl\00pl1428.dgn

MAINTENANCE OF TRAFFIC (STAGE 1) PLAN & PROFILE - FAP ROUTE 315 (IL 336) STA 1428+50 TO STA 1442+50