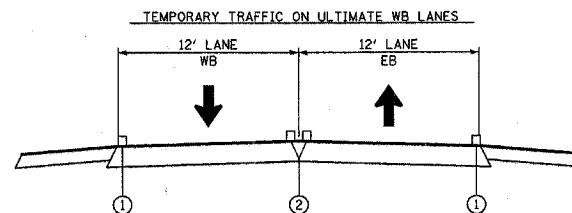
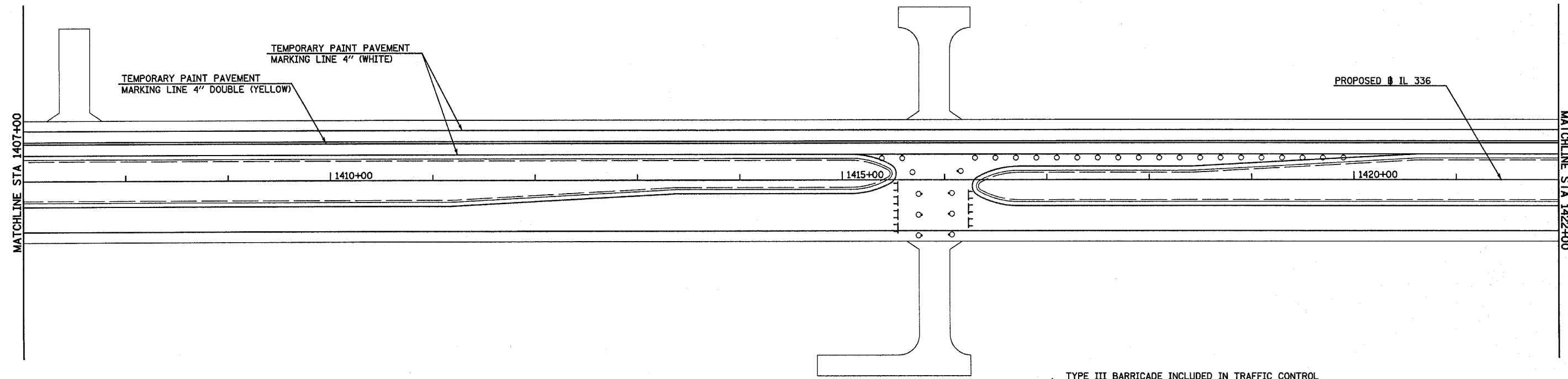
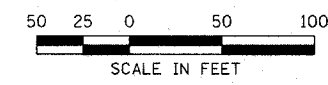
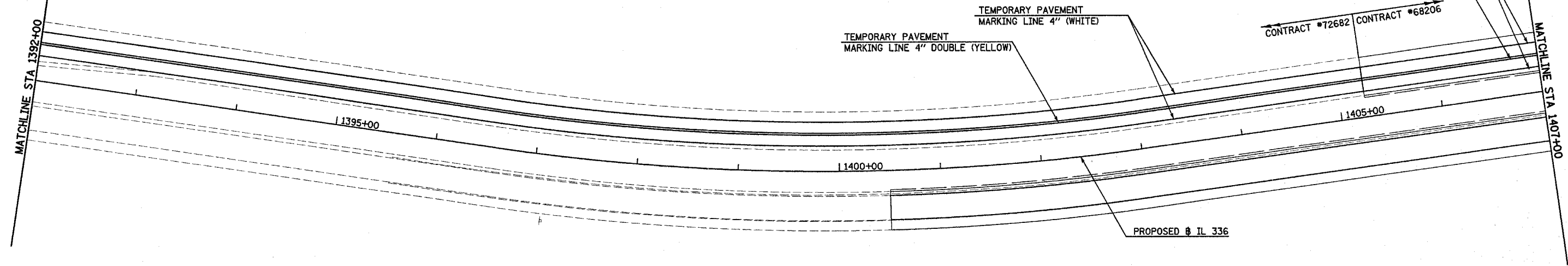


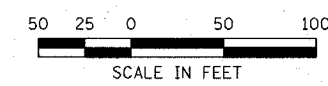
F.A.P. RTE.	SECTION	COUNTY	TOTAL SHEETS	SHEET NO.
315	(34-6,55-1)	HANCOCK / McDONOUGH	433	106
STA. 1392+00		TO STA. 1422+00		
FED. ROAD DIST. NO.	ILLINOIS	FED. AID PROJECT		STATE CONTRACT NO. 68206



- ① EDGE LINES
TEMPORARY PAVEMENT MARKING 4" WHITE OR
TEMPORARY PAINT PAVEMENT MARKING 4" WHITE
- ② SOLID DOUBLE YELLOW
TEMPORARY PAVEMENT MARKING 4" YELLOW OR
TEMPORARY PAINT PAVEMENT MARKING 4" YELLOW



- 1 TYPE III BARRICADE INCLUDED IN TRAFFIC CONTROL & PROTECTION STANDARD 401416 (SPECIAL)
- o DRUM WITH MONODIRECTIONAL STEADY LIGHT AT 20' CENTERS INCLUDED IN TRAFFIC CONTROL & PROTECTION STANDARD 701416 (SPECIAL)



Plot Date: 7/18/2013
 Plot Time: 11:44:00
 Plot Path: \\s:\projects\315\315.dwg
 Pen Table: ldec.tbl
 File Name: 1:03033\cadd\1\construct\plan\plans\07T_cstom\201392.dgn