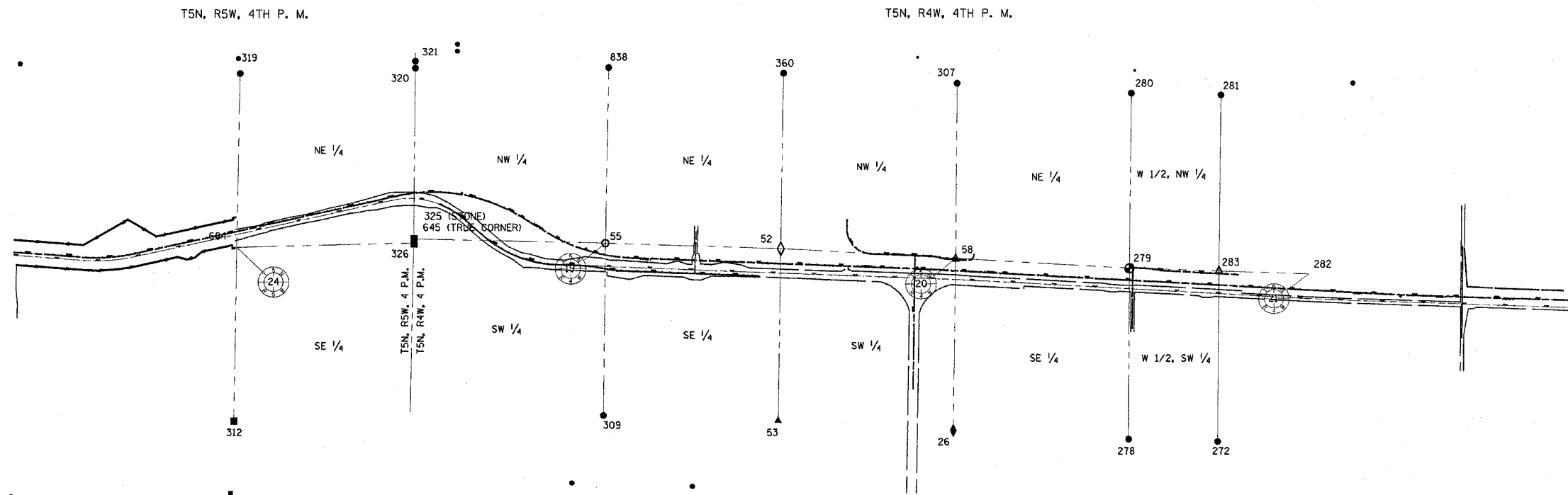


APPROVED BY _____ DISTRICT ENGINEER

DATE _____

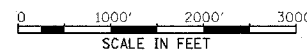


26=	1360325.770 N,	2098406.325 E
52=	1363143.215 N,	2095787.585 E
53=	1360477.787 N,	2095743.049 E
55=	1363229.166 N,	2093118.086 E
58=	1362989.893 N,	2098453.161 E
272=	1360146.748 N,	2102430.355 E
278=	1360190.985 N,	2101074.966 E
279=	1362837.850 N,	2101096.508 E
280=	1365506.130 N,	2101134.453 E
281=	1365464.669 N,	2102496.067 E
283=	1362792.204 N,	2102459.000 E
307=	1365665.955 N,	2098480.434 E
309=	1360563.117 N,	2093081.551 E
312=	1360482.600 N,	2087456.316 E
319=	1365823.056 N,	2087557.046 E
320=	1365912.208 N,	2090224.539 E
321=	1365999.341 N,	2090225.316 E
325=	1363298.009 N,	2090199.819 E
326=	1363234.933 N,	2090199.795 E
645=	1363297.996 N,	2090200.378 E
684=	1363169.990 N,	2087507.005 E

320-326=	S 00°31'46" W 2677.39'
326-684=	S 88°37'06" W 2693.57'
319-684=	S 01°04'50" W 2653.54'
684-312=	S 01°04'50" W 2687.87'
360-52=	S 00°57'26" W 2683.29'
52-53=	S 00°57'26" W 2665.80'
309-55=	N 00°47'06" E 2666.30'
55-838=	N 01°07'24" E 2679.66'
645-55=	S 88°38'55" E 2918.52'
55-52=	S 88°09'21" E 2670.88'
280-279=	S 00°48'53" W 2668.55'
279-278=	S 00°27'59" W 2646.95'
26-58=	N 01°00'26" E 2664.54'
58-307=	N 00°35'02" E 2676.20'
52-58=	S 86°42'29" E 2669.98'
58-279=	S 86°42'29" E 2647.72'
279-283=	S 88°04'52" E 1363.26'

DRAWN BY _____
 WRITTEN BY _____
 CHECKED BY _____
 INSPECTED BY _____

GRID FACTOR = 0.999962
 ZONE = IL WEST, 1983 DATUM
 VERTICAL DATUM = NGVD 1929



- LEGEND**
- ◇ SET RR SPIKE
 - SET PK NAIL
 - SET IRON PIN
 - FOUND BRASS DISK
 - FOUND RR SPIKE
 - FOUND IRON PIN OR PIPE
 - FOUND STONE
 - ▲ FOUND PK NAIL

FOR INFORMATION ONLY

**RIGHT OF WAY PLANS
 FAP ROUTE 315**

PROJECT _____ SECTION 34-6, 55-1
 STATION _____ TO
 STATION _____
 COUNTY HANCOCK & MC DONOUGH
 SCALE 1"=1000' SHEET 7 OF 8