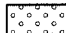
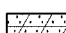


F.A.P. RTE.	SECTION	COUNTY	TOTAL SHEETS	SHEET NO.
315	(34-6,55-1)	HANCOCK/MCDONOUGH	433	172
STA. 1422+00		TO STA. 1451+00		
FED. ROAD DIST. NO.	ILLINOIS	FED. AID PROJECT		STATE CONTRACT NO. 68206

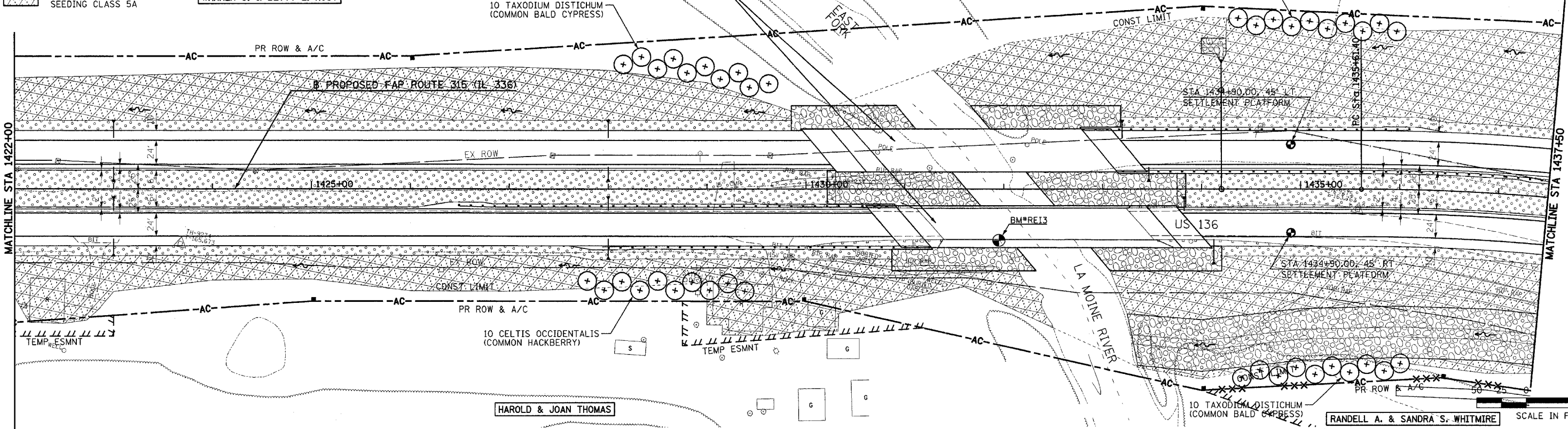
LEGEND

-  SEEDING CLASS 2A
-  SEEDING CLASS 4A & SEEDING CLASS 5A

WARREN C. & BETTY E. KOST

JAMES A. & VIRGINIA JEAN NORRIS, TRUSTEES

10 TAXODIUM DISTICHUM (COMMON BALD CYPRESS)

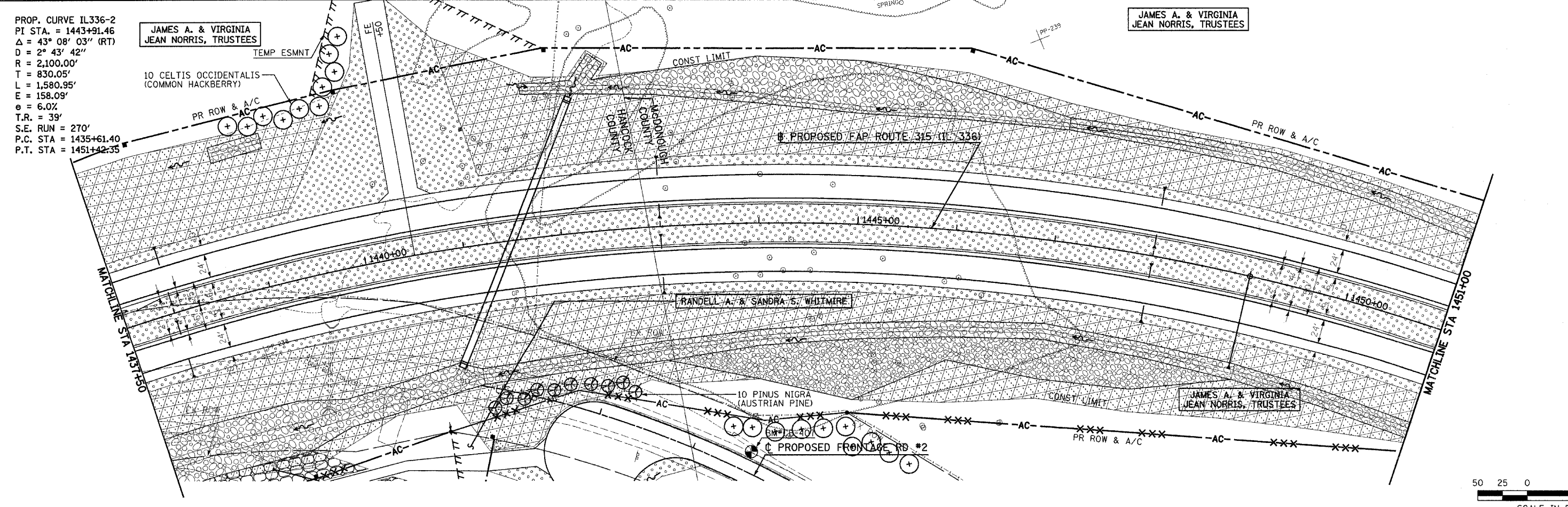


PROP. CURVE IL336-2
 PI STA. = 1443+91.46
 $\Delta = 43^\circ 08' 03''$ (RT)
 $D = 2^\circ 43' 42''$
 $R = 2,100.00'$
 $T = 830.05'$
 $L = 1,580.95'$
 $E = 158.09'$
 $e = 6.0\%$
 $T.R. = 39'$
 $S.E. RUN = 270'$
 $P.C. STA = 1435+61.40$
 $P.T. STA = 1451+42.35$

JAMES A. & VIRGINIA JEAN NORRIS, TRUSTEES

10 CELTIS OCCIDENTALIS (COMMON HACKBERRY)

JAMES A. & VIRGINIA JEAN NORRIS, TRUSTEES



RANDELL A. & SANDRA S. WHITMIRE

10 PINUS NIGRA (AUSTRIAN PINE)

JAMES A. & VIRGINIA JEAN NORRIS, TRUSTEES

Plot Date: 8/20/2006
 Plot Time: 12:47:33 PM
 Plotted By: sdrachua
 Pen Table: ldot.tbl
 File Name: I:\D0333\cadd\construct\for\plans\MLL1603\ml162.dgn