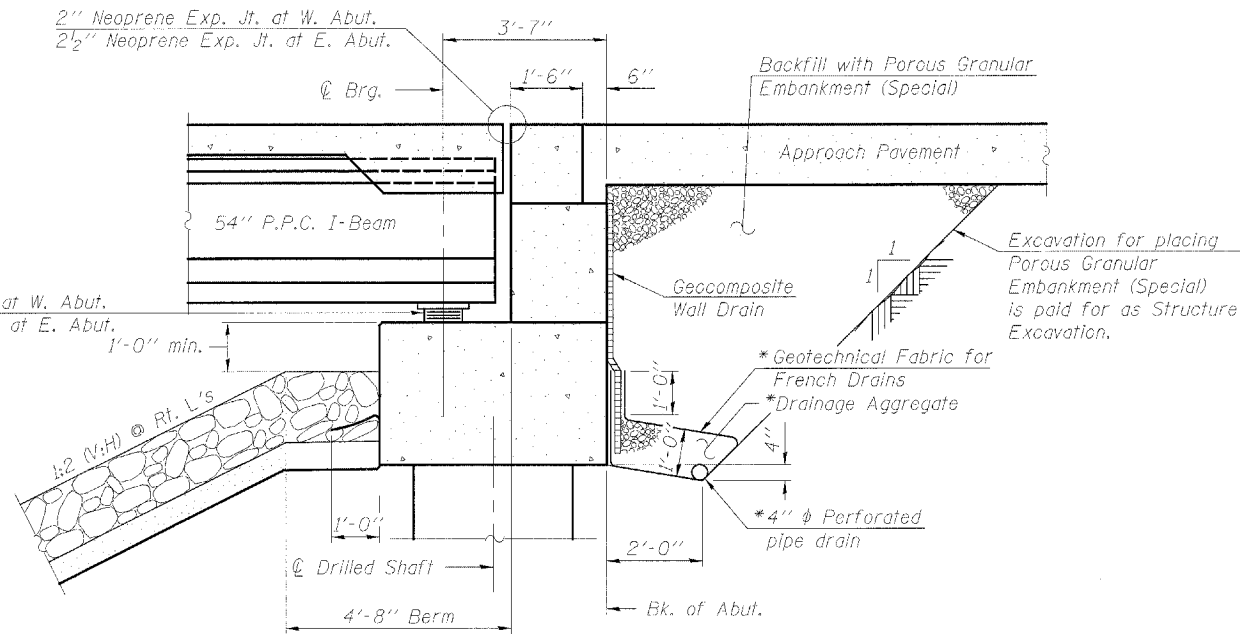


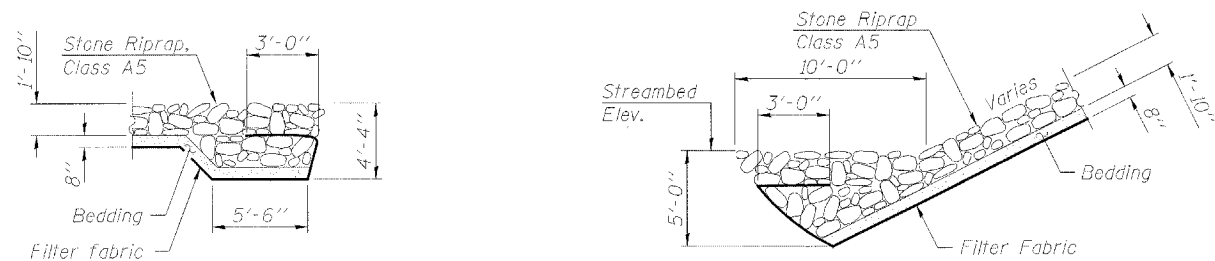
Contract #68206



**SECTION THRU ABUTMENT**  
(Horiz. dim. @ Rt. L's)

\* Included in the cost of Pipe Underdrains for Structures.

Note:  
All drainage system components shall extend parallel to the abutment back wall until they intersect the wingwalls or 2'-0" from the end of the wingwalls when the wings are parallel to the abutment. The pipe shall extend under the wingwall, if necessary, until intersecting the side slopes. The pipes shall drain into concrete headwalls. (See Article 601.05 of the Standard Specifications and Highway Standard 601101).



**SECTION A-A**

**SECTION B-B**

STATION 1432+02.61  
BUILT 200 BY  
STATE OF ILLINOIS  
F.A.P. ROUTE 315  
SEC. 34-6, 55-1  
LOADING HL-93  
STR. NO. 034-0511

STATION 1432+02.61  
BUILT 200 BY  
STATE OF ILLINOIS  
F.A.P. ROUTE 315  
SEC. 34-6, 55-1  
LOADING HL-93  
STR. NO. 034-0512

**E.B. STRUCTURE**

**W.B. STRUCTURE**

**NAME PLATES**

See Std. 515001

**HORNER & SHIFRIN, INC.**  
ENGINEERS ■ ARCHITECTS ■ PLANNERS

DESIGNED	KLH
CHECKED	EML
DRAWN	EML
CHECKED	JGC

**INDEX OF SHEETS**

1. General Plan
2. General Notes and Details
3. Substructure Layout
- 4.-7. Deck Elevations
8. Superstructure Details I
9. Superstructure Details II
10. Superstructure Details III
11. Continuous Seal Type Neoprene Expansion Joints
12. Drainage Scupper, DS-II
13. Framing Plan
14. 54" PPC I-Beam, Span 1
15. 54" PPC I-Beam, Span 2
16. 54" PPC I-Beam, Span 3
17. 54" PPC I-Beam Details
18. Bearing Details, Type I
19. Bearing Details, Type II
20. Anchor Bolt Details
21. West Abutment Details - W.B. Structure
22. West Abutment Details - F.B. Structure
23. West Abutment Details
24. East Abutment Details - W.B. Structure
25. East Abutment Details - E.B. Structure
26. East Abutment Details
27. Pier 1 Details - W.B. Structure
28. Pier 1 Details - E.B. Structure
29. Pier 2 Details - W.B. Structure
30. Pier 2 Details - E.B. Structure
31. Bar Splicer Assembly Details
- 32.-36. Boring Logs

**GENERAL NOTES**

All structural Steel shall be AASHTO M 270 Grade 50.  
The structural steel shall be galvanized according to AASHTO M 111 and ASTM A 385.  
Reinforcement bars shall conform to the requirements of AASHTO M 31 or M 322 Grade 60.  
Layout of slope protection system may be varied in the field to suit ground conditions as directed by the Engineer.  
The embankment configuration shown shall be the minimum embankment that must be constructed prior to construction of the abutments.  
Bridge Seat Sealer shall be applied to the seat area of the West and East Abutments.  
All Construction joints shall be bonded.

**TOTAL BILL OF MATERIAL**

ITEM	UNIT	SUPER	SUB	TOTAL
Porous Granular Embankment (Special)	Cu. Yd.		405	405
Stone Riprap, Class A5	Sq. Yd.		5334	5334
Filter Fabric	Sq. Yd.		5642	5642
Removal of Existing Structures No. 2	Each			1
Structure Excavation	Cu. Yd.		431	431
Neoprene Expansion Joint, 2"	Foot	108.5		108.5
Neoprene Expansion Joint, 2 1/2"	Foot	108.5		108.5
Concrete Structures	Cu. Yd.		708.2	708.2
Concrete Superstructure	Cu. Yd.	735.4		735.4
Bridge Deck Grooving	Sq. Yd.	2201		2201
Protective Coat	Sq. Yd.	2201		2201
Elastomeric Bearing Assembly, Type I	Each		36	36
Elastomeric Bearing Assembly, Type II	Each		12	12
Furnishing and Erecting Precast Prestressed Concrete I Beams, 54"	Foot	2932		2932
Furnishing and Erecting Structural Steel	Pound	1100		1100
Reinforcement Bars	Pound		110660	110660
Reinforcement Bars, Epoxy Coated	Pound	177280	100660	277940
Name Plates	Each	2		2
Bridge Seat Sealer	Sq. Ft.		656	656
Geocomposite Wall Drain	Sq. Yd.		166	166
Pipe Underdrains for Structures, 4"	Foot		269	269
Drainage Scuppers, DS-II	Each	4		4
Underwater Structure Excavation Protection, Location-1	Each		1	1
Underwater Structure Excavation Protection, Location-2	Each		1	1
Underwater Structure Excavation Protection, Location-3	Each		1	1
Underwater Structure Excavation Protection, Location-4	Each		1	1
Bar Splicers	Each		740	740
Drilled Shaft in Soil 24" Dia.	Foot		193	193
Drilled Shaft in Soil 42" Dia.	Foot		383	383
Drilled Shaft in Soil 48" Dia.	Foot		174	174
Drilled Shaft in Rock 18" Dia.	Foot		47	47
Drilled Shaft in Rock 36" Dia.	Foot		234	234
Drilled Shaft in Rock 42" Dia.	Foot		228	228

**WATERWAY INFORMATION**

Drainage Area = 219.4 sq. mi. Low Grade Elev. 535.48 @ Sta. 1438+66.20

Flood	Freq. Yr.	Q C.F.S.	Opening Sq. Ft.		Nat. H.W.E.	Head - Ft.		Headwater El.	
			Exist.	Prop.		Exist.	Prop.	Exist.	Prop.
Design	50	11,200	1582	2031	534.1	0.4	0.3	534.5	534.4
Base	100	12,800	1685	2146	534.8	0.5	0.4	535.3	535.2
Overtopping	160	13,500	1729	-	535.1	0.5	-	535.6	-
Max. Calc.	500	16,700	-	2354	536.3	-	1.3	-	537.6

**GENERAL NOTES AND DETAILS**  
**ILLINOIS ROUTE 336 OVER**  
**EAST FORK OF THE LAMOINE RIVER**  
**F.A.P. ROUTE 315 - SECTION 34-6, 55-1**  
**HANCOCK COUNTY; STA. 1432+02.61**  
**STRUCTURE NO. 034-0511 (E.B.)**  
**STRUCTURE NO. 034-0512 (W.B.)**