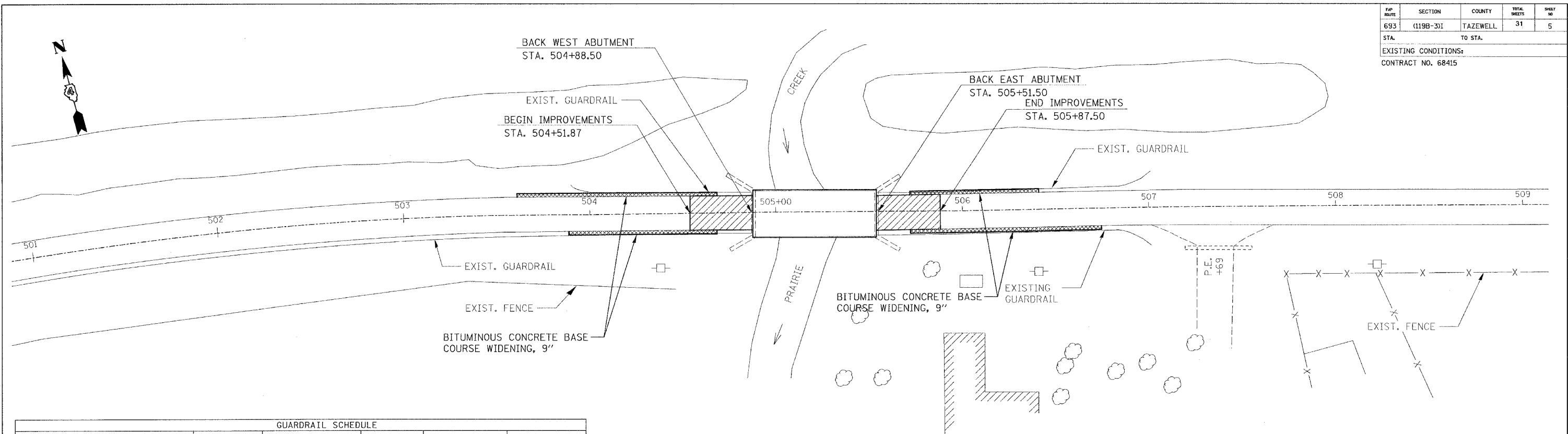


FAP ROUTE	SECTION	COUNTY	TOTAL SHEETS	SHEET NO
693	(119B-3)I	TAZEWELL	31	5
STA. TO STA.		EXISTING CONDITIONS:		
CONTRACT NO. 68415				



GENERAL SITE PLAN

GUARDRAIL SCHEDULE						
STATION TO STATION		SPBGR TYPE A (FOOT)	TRAFFIC BARRIER TERMINAL, TYPE 6A (EACH)	SPBGR REMOVAL (FOOT)	GUARDRAIL MARKERS T-A (EACH)	BARRIER WALL MARKER T-A (EACH)
504+37.25 LT.	504+68.50 LT.			31.25		
504+37.25 RT.	504+68.50 RT.			31.25		
505+71.50 LT.	506+02.75 LT.			31.25		
505+71.50 RT.	506+02.75 RT.			31.25		
504+37.25 RT.	504+68.50 RT.		1		2	
505+71.50 RT.	506+02.75 RT.		1		2	
504+37.25 LT.	504+68.50 LT.		1		2	
505+71.50 LT.	506+02.75 LT.		1		2	
504+68.50 RT.	505+71.50 RT.					2
504+68.50 LT.	505+71.50 LT.					2
TOTAL:			4	125	8	4

PAVING SCHEDULE							
STATION TO STATION		BITUMINOUS MATERIALS PRIME COAT (GALLON)	AGGREGATE (TON)	BITUMINOUS SURFACE REMOVAL (SQ. YD.)	AGGREGATE SHOULDERS (TON)	BITUMINOUS CONCRETE SURFACE COURSE SUPERPAVE MIX D (TON)	BINDER COURSE SUPERPAVE N50 (TON)
504+51.87	504+88.00	17.5	0.5		1.5	10	10.5
505+52.00	505+87.50	17.5	0.5		1.5	10	10.5
504+87.87	505+51.50			92		33	
504+51.87	505+87.50						
TOTAL:		35	1	92	3	53	21

PAVEMENT MARKING SCHEDULE						
STATION TO STATION	SHORT TERM PAVEMENT MARKINGS (FOOT)	TEMPORARY PAVEMENT MARKING LINE 4" (FT.)	WORK ZONE PAVEMENT MARKING REMOVAL (SQ. FT.)	EPOXY PAVEMENT MARKING LINE 4" (FOOT)		PAVEMENT MARKING REMOVAL (SQ. FT.)
				WHITE	YELLOW	
501+51.00 C TO 508+60.00 C	144		48		1418	473
501+51.00 RT. TO 508+60.00 RT.			236.3			
501+51.00 LT. TO 508+60.00 LT.			236.3			
501+51.00 RT. TO 508+60.00 RT. (STAGE 1 & 2)		1418	236.3			
501+51.00 LT. TO 508+60.00 LT. (STAGE 1 & 2)		1418	236.3			
504+51.87 RT. TO 505+87.50 RT.		135.6	45.2	135.6		
504+51.87 LT. TO 505+87.50 LT.		135.6	45.2	135.6		
STOP BAR (2 LOCATIONS)			48			
SUB TOTAL:		3107	1132	271.2	1418	
TOTAL:	144	3107	1132	1689	1418	473

EARTH EXCAVATION (WIDENING)		
STATION TO STATION		EXCAVATION (CU YD)
503+60.00, LT.	504+67.95, LT.	15
505+71.42, LT.	506+40.00, LT.	10
503+90.00, RT.	504+67.95, RT.	11
505+71.42, RT.	506+70.00, RT.	14
TOTAL:		50

BITUMINOUS BASE COURSE WIDENING, 9"		
STATION TO STATION		WIDENING (SQ YD)
503+60.00, LT.	504+67.95, LT.	60
505+71.42, LT.	506+40.00, LT.	38
503+90.00, RT.	504+67.95, RT.	43
505+71.42, RT.	506+70.00, RT.	55
TOTAL:		196

REVISIONS	
NAME	DATE

ILLINOIS DEPARTMENT OF TRANSPORTATION  
**GENERAL SITE PLAN AND SCHEDULES**  
 F.A.P. RTE. 693  
 SECTION (119B-3)I  
 TAZEWELL COUNTY

SCALE: NONE  
 DATE: 03/24/2006  
 PLOT DATE: \*DATE-TIME\*

DRAWN BY: KBF  
 CHECKED BY: AJE

AS NOTED  
 DATE-TIME  
 DIM-SPEC  
 REF