

F.A.P. RTE.	SECTION	COUNTY	TOTAL SHEETS	SHEET NO.
701	(128BR11-1	TAZEWELL	29	5
STA. 77+63.98		TO STA. 78+48.02		
FED. ROAD DIST. NO. 4		ILLINOIS FED. AID PROJECT		

SUMMARY OF QUANTITIES

CONSTRUCTION TYPE CODE

CODE NO.	ITEM	UNIT	CONSTRUCTION TYPE CODE		TOTAL
			X080-2A	SFTY-3N	
			STATE 100% →		
50101500	REMOVAL OF EXISTING SUPERSTRUCTURES	EACH	1		1
50300225	CONCRETE STRUCTURES	CU YD	6		6
50300260	BRIDGE DECK GROOVING	SQ YD	273		273
50300300	PROTECTIVE COAT	SQ YD	294		294
50400105	PRECAST CONCRETE BRIDGE SLAB	SQ FT	299		299
50400405	PRECAST PRESTRESSED CONCRETE DECK BEAMS (21" DEPTH)	SQ FT	2646		2646
50800205	REINFORCEMENT BARS, EPOXY COATED	POUND	4,640		4,640
50800515	BAR SPLICERS	EACH	88		88
50901050	STEEL RAILING , TYPE SM	FOOT	244		244
51500100	NAME PLATES	EACH	1		1
* 63000000	STEEL PLATE BEAM GUARDRAIL, TYPE A	FOOT	37.5		37.5
* 63100087	TRAFFIC BARRIER TERMINAL, TYPE 6A	EACH	4		4
* 63100167	TRAFFIC BARRIER TERMINAL TYPE 1, SPECIAL (TANGENT)	EACH	4		4
63200305	STEEL PLATE BEAM GUARDRAIL REMOVAL	FOOT	125		125
△ 63301210	REMOVE AND RE-ERECT STEEL PLATE BEAM GUARDRAIL, TYPE A	FOOT	50		50
67000400	ENGINEER'S FIELD OFFICE, TYPE A	CAL MO	4		4
67100100	MOBILIZATION	LSUM	1		1
70100405	TRAFFIC CONTROL AND PROTECTION STANDARD 701321	EACH	1		1
70104600	TRAFFIC CONTROL AND PROTECTION STANDARD 701306	L SUM	1		1

* SPECIALTY ITEM

△ REVISED 1/4/07

REVISIONS	
NAME	DATE

ILLINOIS DEPARTMENT OF TRANSPORTATION

SUMMARY OF QUANTITIES

SCALE: VERT.
DATE 03-24-2006

DRAWN BY CEJ
CHECKED BY

BENCHMARK: CHISLED SQUARE ON BRIDGE DECK
ON SOUTHWEST CORNER
ELEV = 100.00

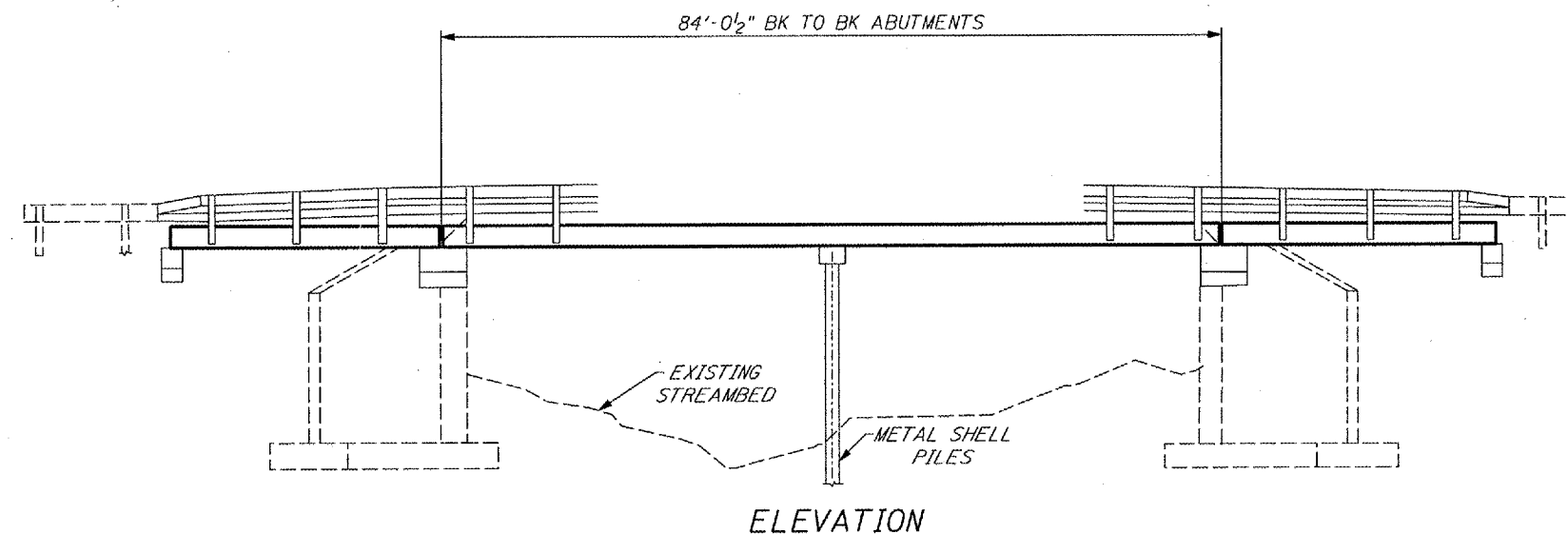
EXISTING STRUCTURE: SN 090-0058 IS A 33'-0" WIDE x 84'-0 1/2"
LONG P.C.C. DECK BEAM SUPERSTRUCTURE WITH R.C. CLOSED ABUTMENTS.

ROUTE NO.	SECTION	COUNTY	TOTAL SHEETS	SHEET NO.
FAP 701	*	TAZEWELL	29	22
FED. ROAD DIST. NO. 4		ILLINOIS	FED. AID PROJECT	

* (128BR)I-1

INDEX OF SHEETS

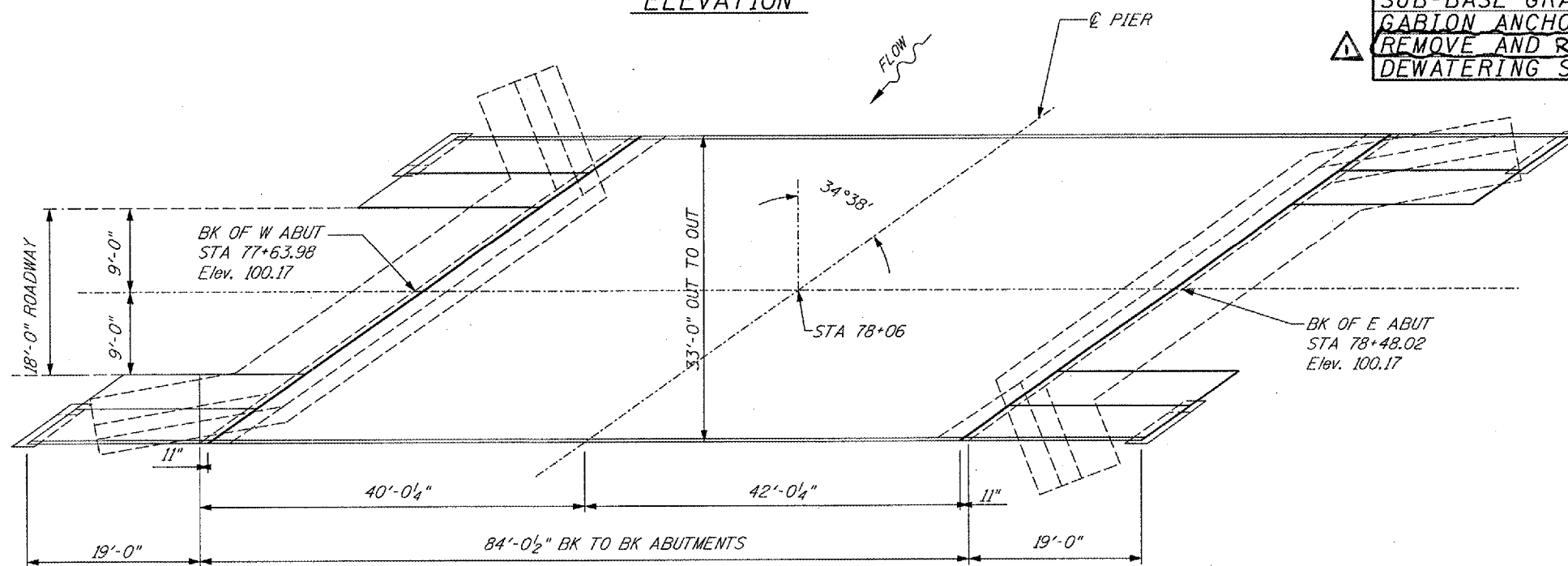
SHEET NUMBER	DESCRIPTION
1	GENERAL PLAN AND PROFILE, SUMMARY OF QUANTITIES, LOCATION MAP
2	R.O.W. PLAN
3	PROPOSED SITE PLAN
4	PROPOSED DIMENSION PLAN
5	SITE PROFILE
6-8	CROSS SECTIONS



ELEVATION

BILL OF MATERIALS

ITEM	UNIT	TOTAL
CHANNEL EXCAVATION	CU YD	1090
PERIMETER EROSION CONTROL BARRIER	FOOT	92
STONE RIP-RAP, CLASS A5	TONS	1165
FILTER FABRIC FOR RIPRAP	SQ YD	1067
GABIONS	CU YD	339
SUB-BASE GRANULAR MATERIAL, TYPE C	TONS	395
GABION ANCHOR STAKES	EACH	103
REMOVE AND RE-ERECT STEEL PLATE GUARD RAIL, TYPE A	FOOT	50
DEWATERING STRUCTURE NO. 1	EACH	1



PLAN

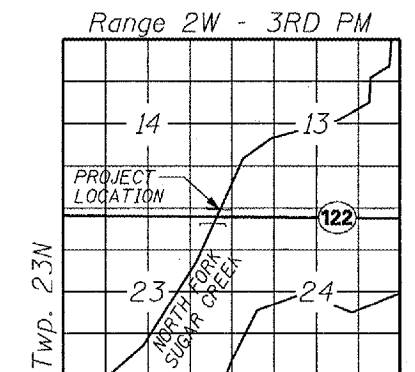
EXISTING BRIDGE



REVISIED 1/4/07

WATERWAY/SCOUR INFORMATION

DESIGN FLOOD	100 YRS
DRAINAGE AREA	23.4 SQ MI
FLOW	4,299 CFS
FLOW DEPTH	10.76 FT
REQUIRED OPENING	515 SQ FT
PROVIDED OPENING	842 SQ FT
CONTRACTION SCOUR DEPTH	8 FT

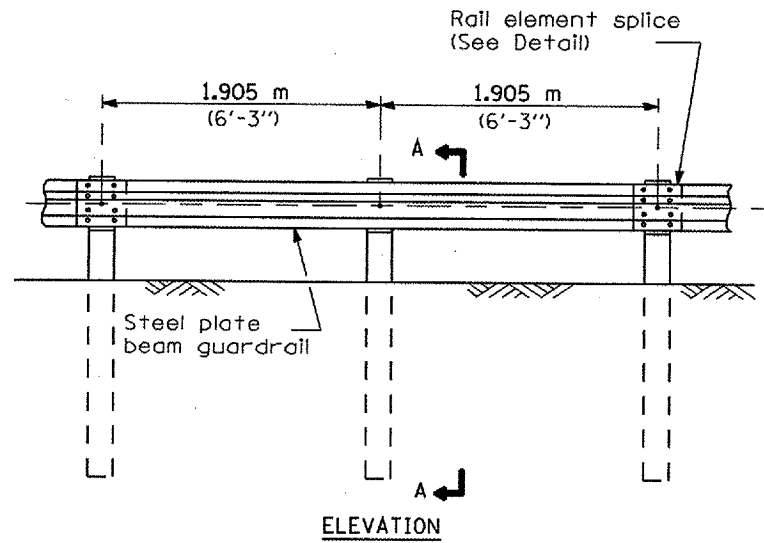


LOCATION SKETCH

ILLINOIS DEPARTMENT OF TRANSPORTATION
GENERAL PLAN & ELEVATION
S.N. 090-0058
F.A.P. 701 (IL 122) OVER
NORTH FORK SUGAR CREEK
TAZEWELL COUNTY
SHEET 1 OF 8

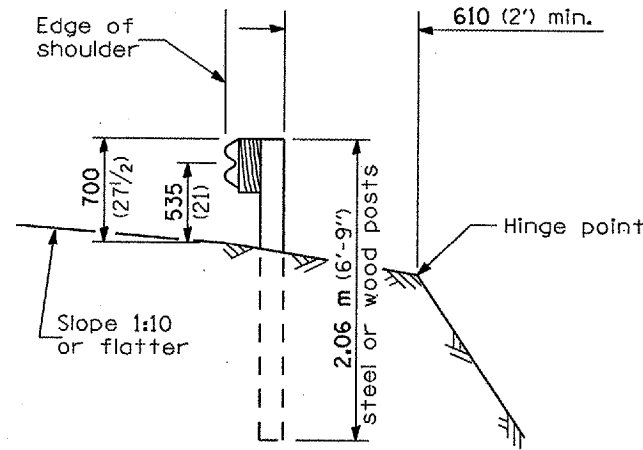
F.A. RTE.	SECTION	COUNTY	TOTAL SHEETS	SHEET NO.
				29A
FED. ROAD DIST. NO.		ILLINOIS FED. AID PROJECT		

68484

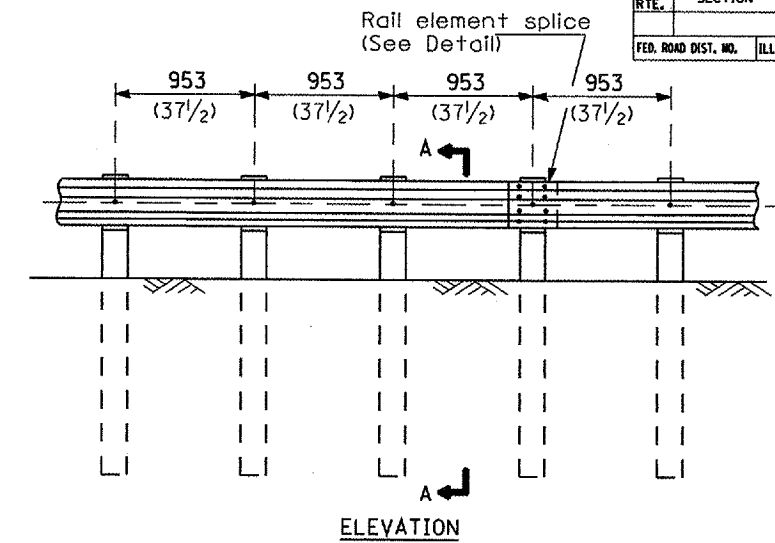


TYPE A

1.905 m (6'-3") Typical post spacing

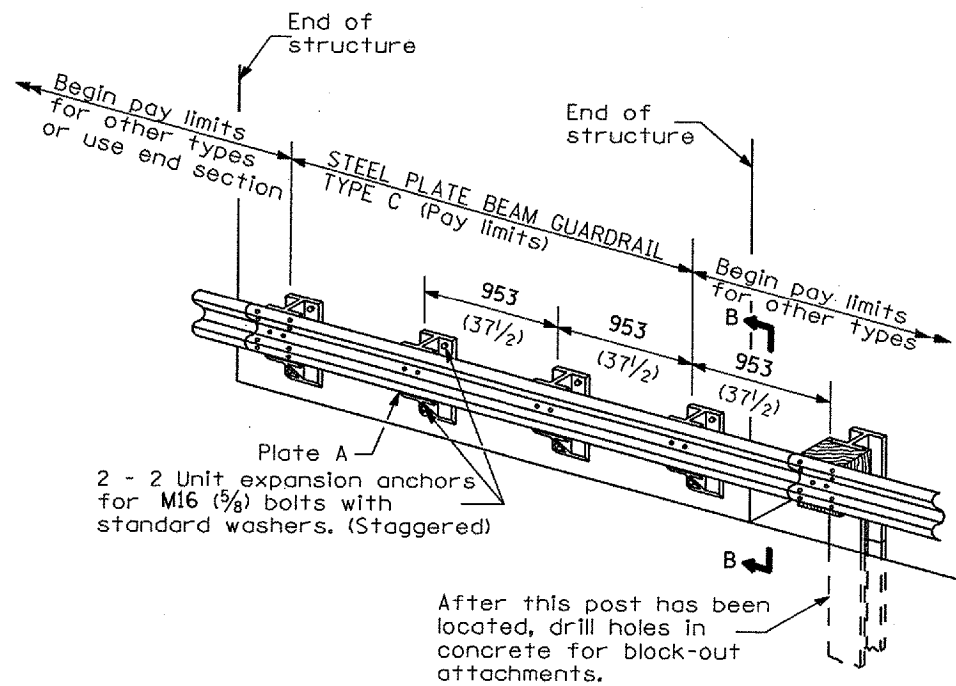


SECTION A-A



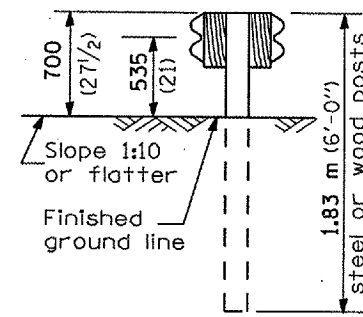
TYPE B

953 (37 1/2) Closed post spacing

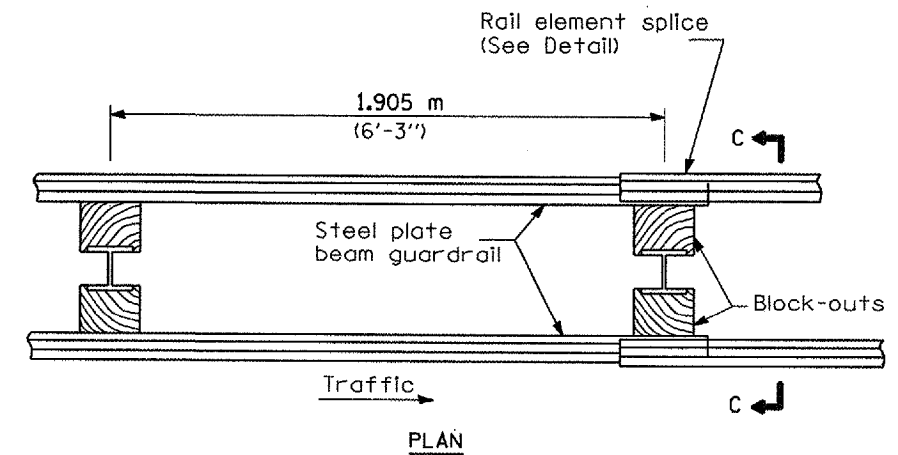


TYPE C

953 (37 1/2) Block-out spacing

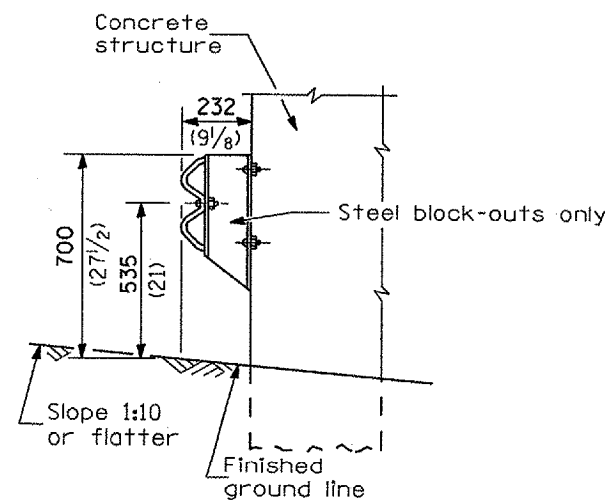


SECTION C-C



TYPE D

Double steel plate beam guardrail
1.905 m (6'-3") typical post spacing



SECTION B-B

GENERAL NOTES

All slope ratios are expressed as units of vertical displacement to units of horizontal displacement (V:H).

All dimensions are in millimeters (inches) unless otherwise shown.

The existing steel posts may be drilled to match the bolt pattern shown herein for the wood block-out, or a new steel post shall be provided.

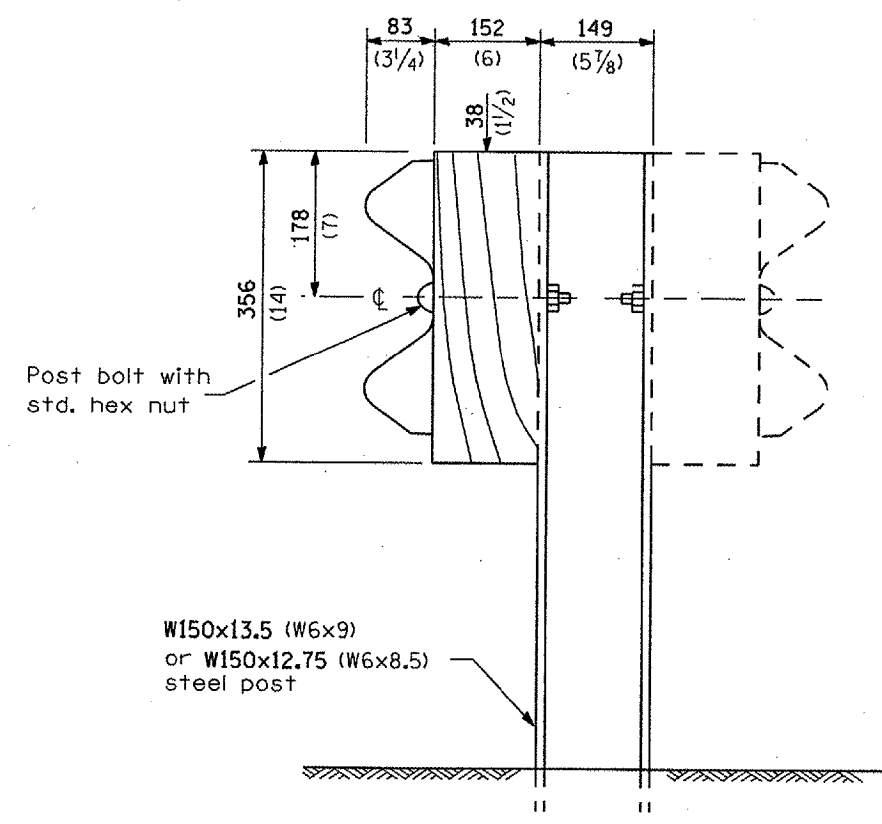
**REMOVE AND REERECT
STEEL PLATE BEAM GUARDRAIL**

(Sheet 1 of 4)

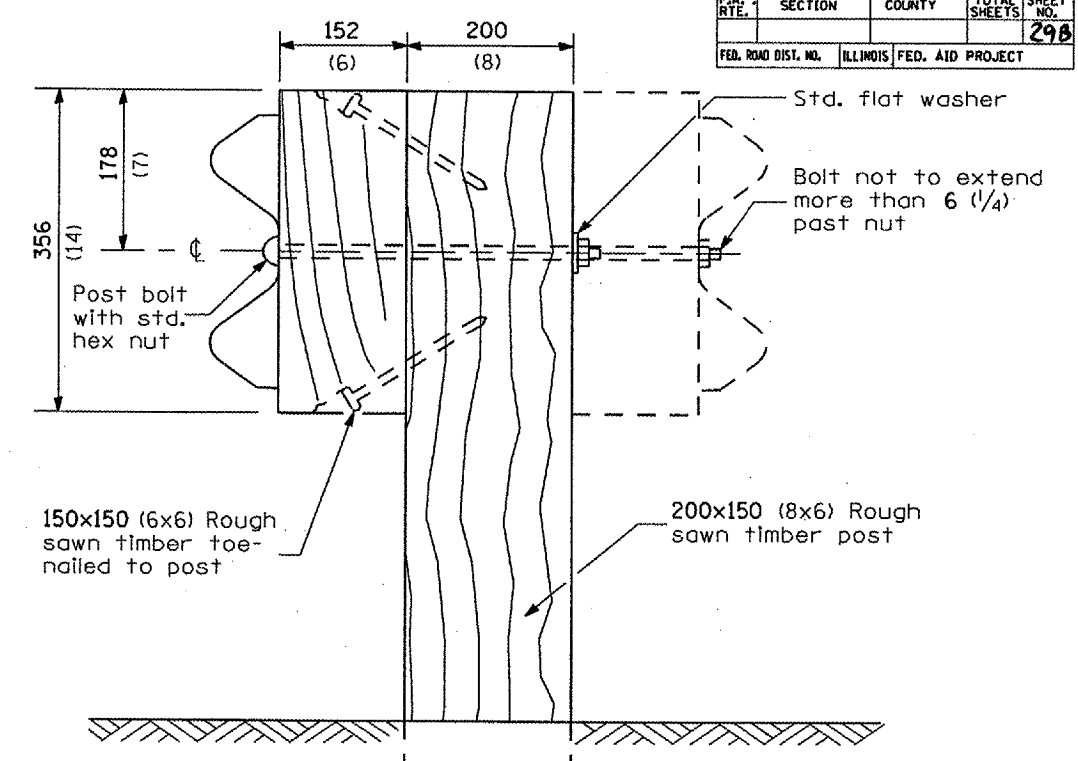
DETAIL

68484

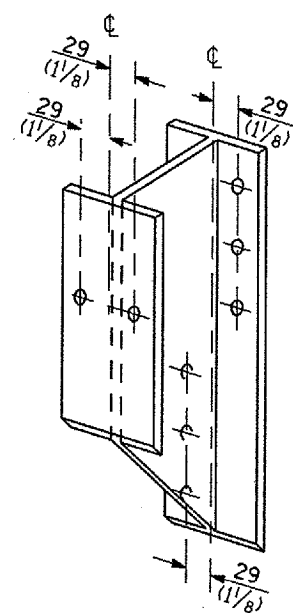
F.A. RTE.	SECTION	COUNTY	TOTAL SHEETS	SHEET NO.
				298
FED. ROAD DIST. NO.		ILLINOIS FED. AID PROJECT		



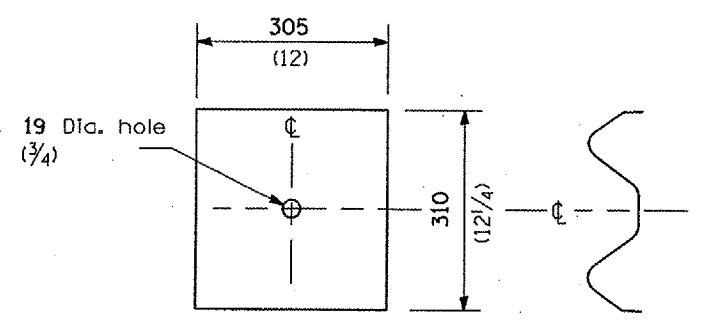
STEEL POST CONSTRUCTION



WOOD POST CONSTRUCTION



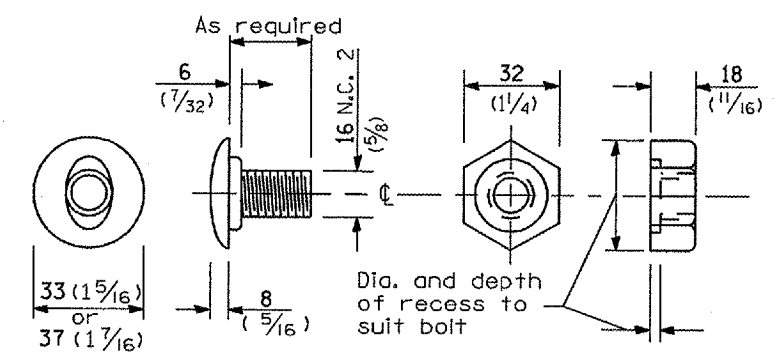
STEEL BLOCK-OUT DETAIL



NOTE

Plate A shall be placed between rail element and block-out at non-splice mounting points only when steel block-outs are used.

PLATE A



POST OR SPLICE BOLT & NUT

**REMOVE AND REERECT
STEEL PLATE BEAM GUARDRAIL**

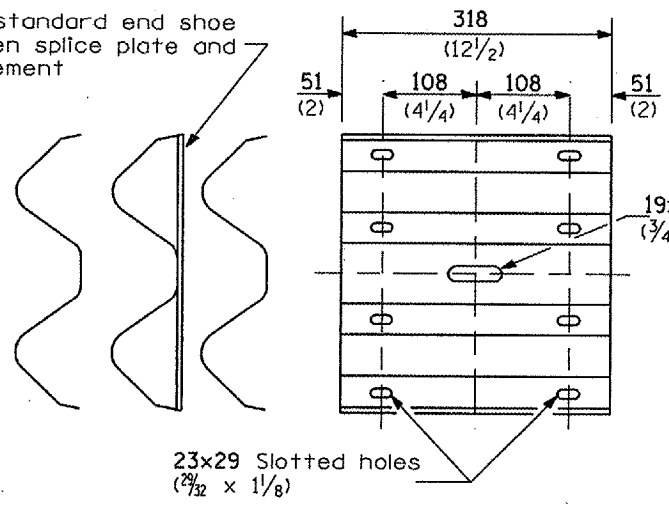
(Sheet 2 of 4)

DETAIL

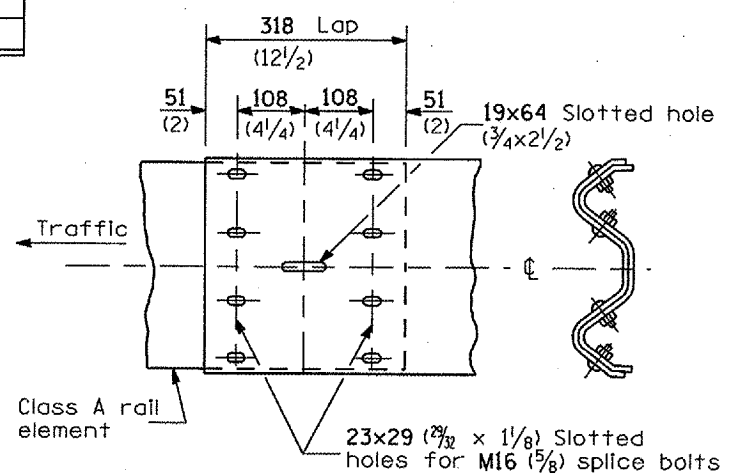
△ ADDED 1/4/07

F.A. RTE.	SECTION	COUNTY	TOTAL SHEETS	SHEET NO.
				29C
FED. ROAD DIST. NO.		ILLINOIS FED. AID PROJECT		

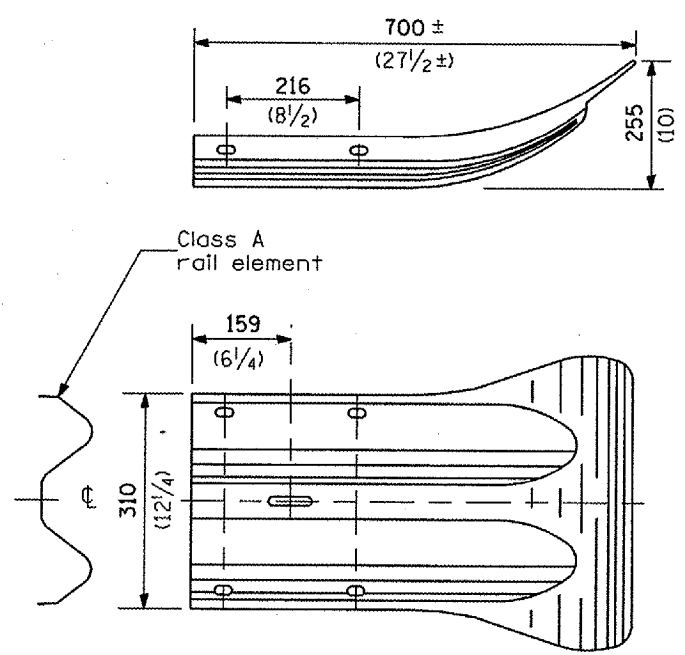
Place standard end shoe between splice plate and rail element



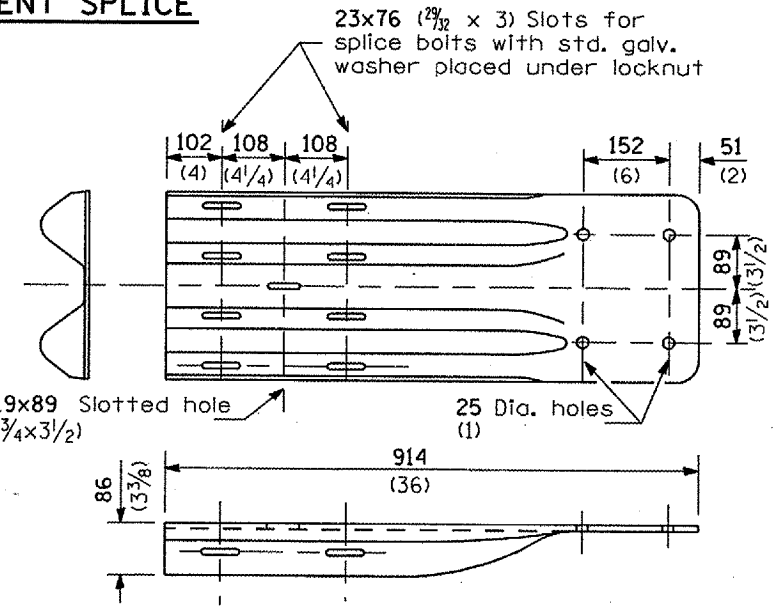
SPLICE PLATE



RAIL ELEMENT SPLICE



END SECTION



NOTE

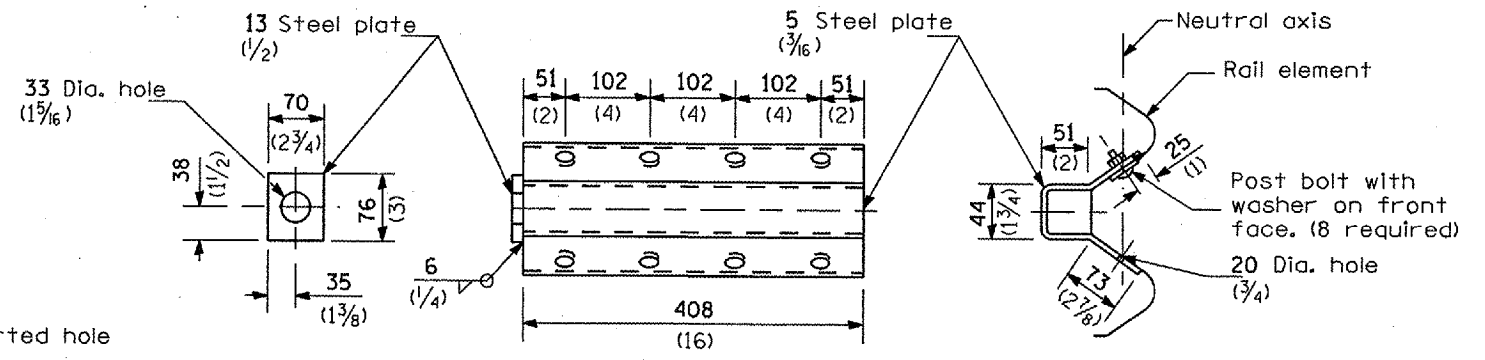
When end shoe is attached to a bridge parapet which has an expansion joint, the bolts shall be provided with a locknut or double nut and shall be tightened only to a point that will allow guardrail movement.

The standard end shoe shall be attached to the concrete with pre-drilled or self-drilling anchor bolts. The anchor cone shall be set flush with the surface of the concrete.

Externally threaded studs protruding from the surface of the concrete will not be permitted.

END SHOE

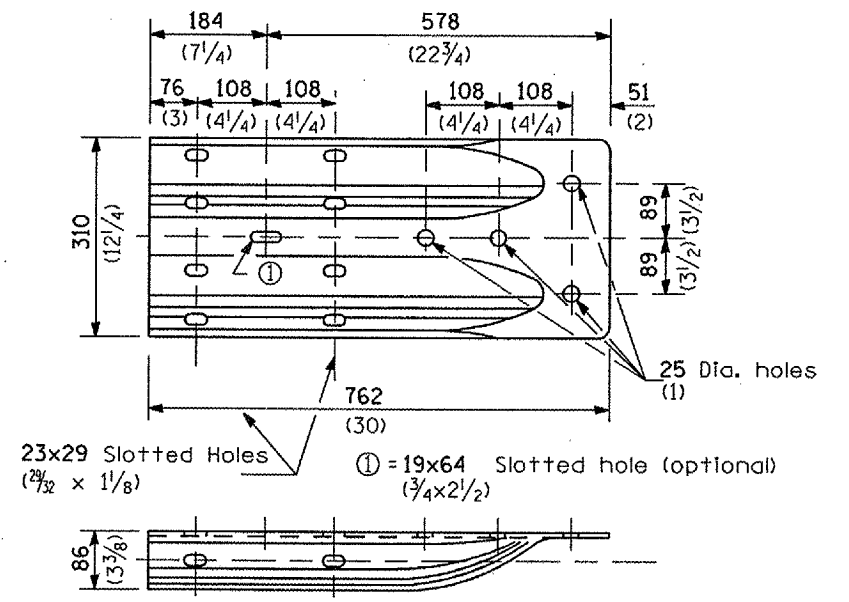
▲ ADDED 1/4/07



NOTE

Anchor plate T shall be used to attach cable assembly to guardrail when required on traffic barrier terminals.

ANCHOR PLATE T DETAILS



ALTERNATE END SHOE

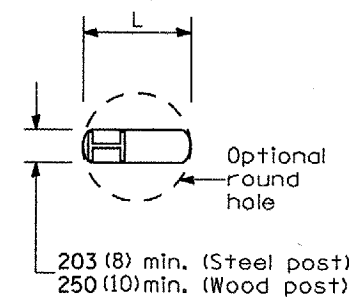
REMOVE AND REERECT STEEL PLATE BEAM GUARDRAIL

(Sheet 3 of 4)

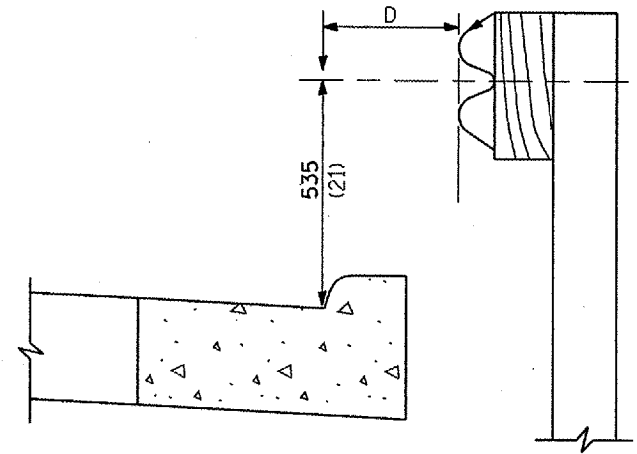
DETAIL

68484

F.A. RTE.	SECTION	COUNTY	TOTAL SHEETS	SHEET NO.
				29D
FED. ROAD DIST. NO. ILLINOIS FED. AID PROJECT				



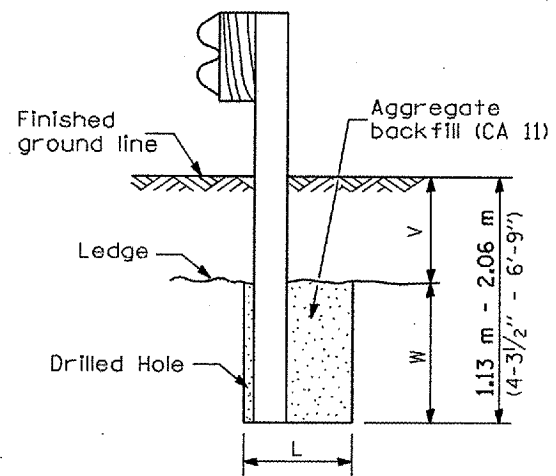
PLAN



Notes:
 If it is necessary for D to be more than 300 (12) and less than 3.0 m (10'-0") type M-5 (M-2) curb and gutter (Std. 606001) shall be used in front of and in advance of the guardrail.

GUARDRAIL PLACED BEHIND CURB

(D = 0 desirable to 300 (12) maximum)

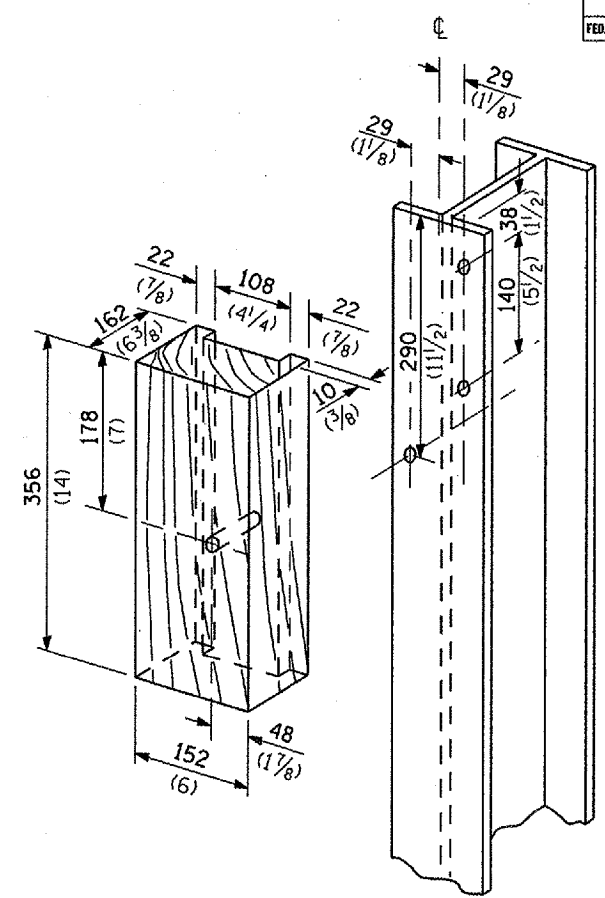


Note:
 Ledge line is top of rock ledge or hard slag fill.

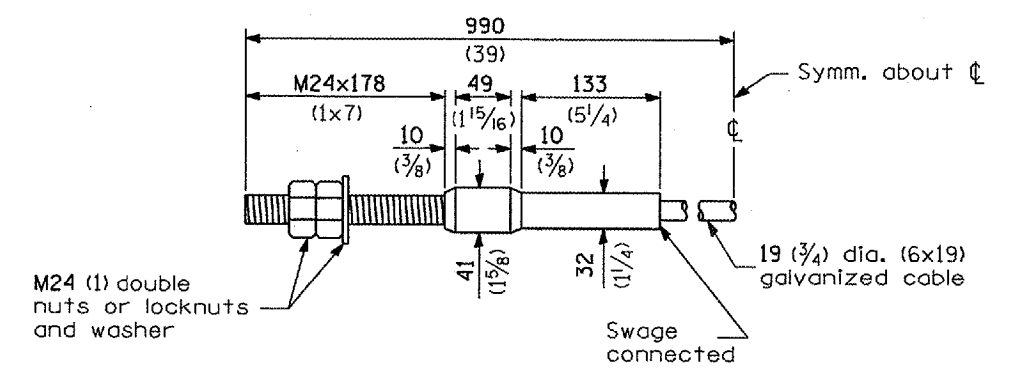
ELEVATION

FOOTING FOR POST WHEN IMPERVIOUS MATERIAL IS ENCOUNTERED

V	W	L	
		Steel Post	Wood Post
0 - 460 (0 - 18)	610 (24)	530 (21)	580 (23)
>460 - 825 (>18 - 41.5)	305 (12)	203 (8)	250 (10)
>825 - 1.13 m (>41.5 - 53.5)	305 - 0 (12 - 0)	203 (8)	250 (10)



WOOD BLOCK-OUT AND STEEL POST DETAILS



CABLE ASSEMBLY

(18,100 kg (40,000 lbs.) min. breaking strength)
 Tighten to taut tension.

REMOVE AND REERECT STEEL PLATE BEAM GUARDRAIL

(Sheet 4 of 4)

DETAIL

△ ADDED 1/4/07