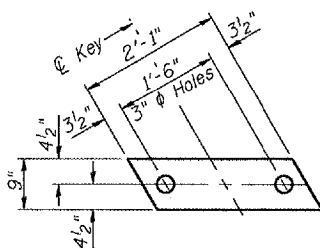
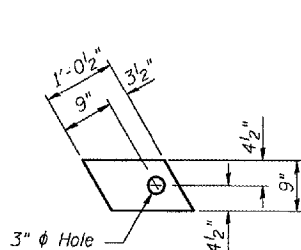


STATE OF ILLINOIS
DEPARTMENT OF TRANSPORTATION

ROUTE NO.	SECTION	COUNTY	DATE	SHEET	SHEET NO. 4
		Tazewell	29	15	10 SHEETS
FED. ROAD DIST. NO. 7		ILLINOIS	FED. AID PROJECT		

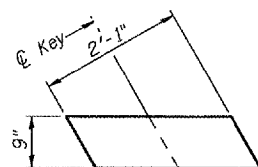


FABRIC BEARING PAD
(Interior)

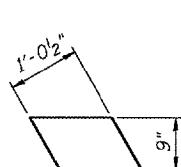


FABRIC BEARING PAD
(Exterior)

FIXED

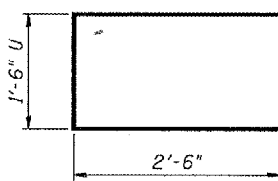


FABRIC BEARING PAD
(Interior)

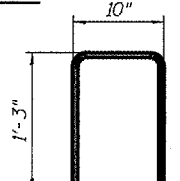


FABRIC BEARING PAD
(Exterior)

EXPANSION

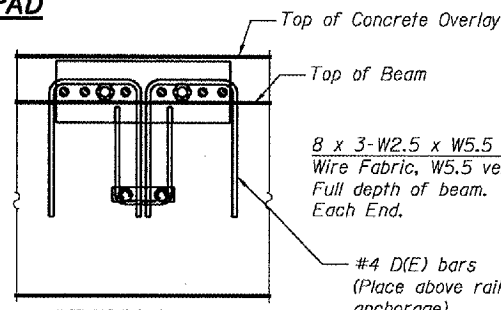


BAR U

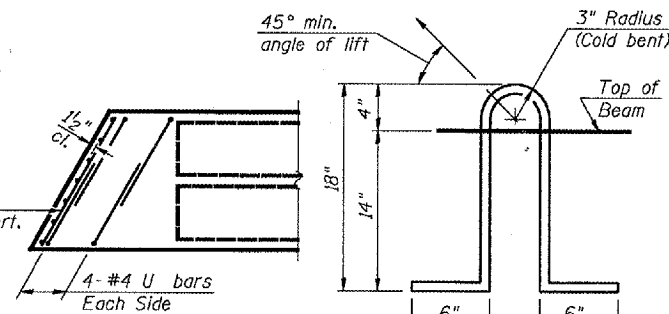


BAR D (E)

1'-6" Lifting loops
2 each end

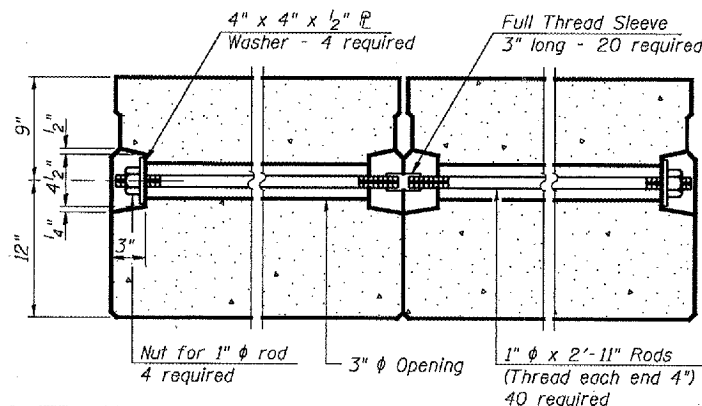


SECTION A-A

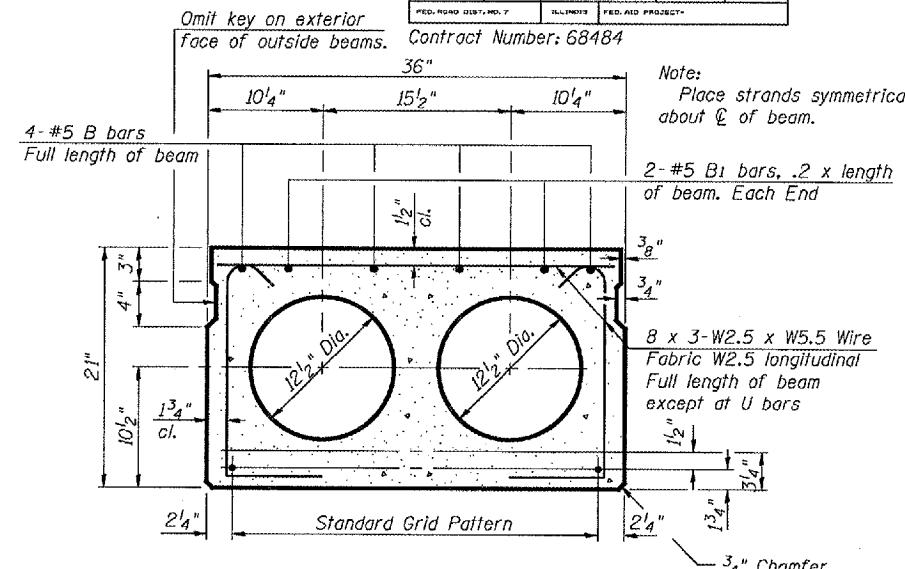


END PLAN

LIFTING LOOP DETAIL

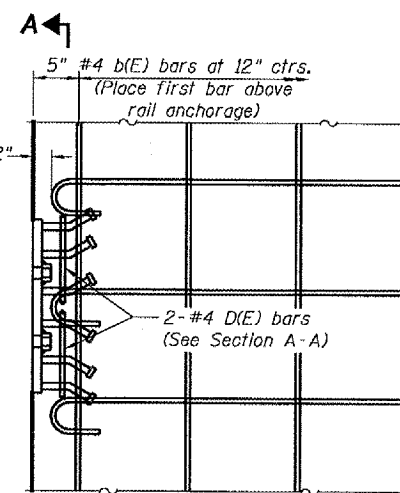


TYPICAL TRANSVERSE TIE ASSEMBLY

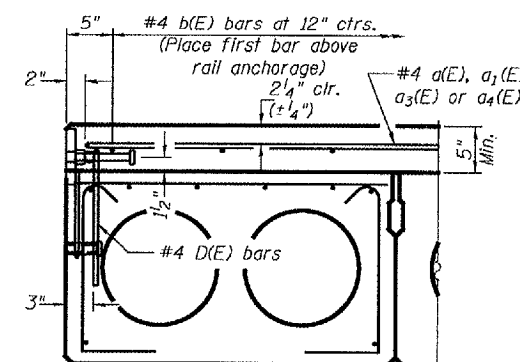


TYPICAL SECTION

1/2" Strands, Each Strand Stressed to 30,900 Lbs.
6-Strands 1 3/4" up, 4-Strands 3/4" up

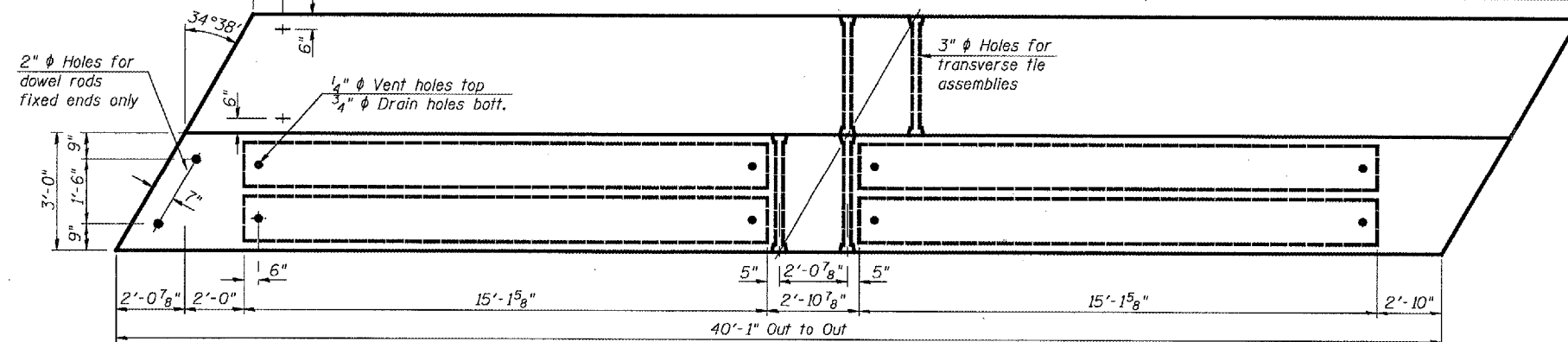


PARTIAL DECK PLAN AT
RAIL ANCHORAGE

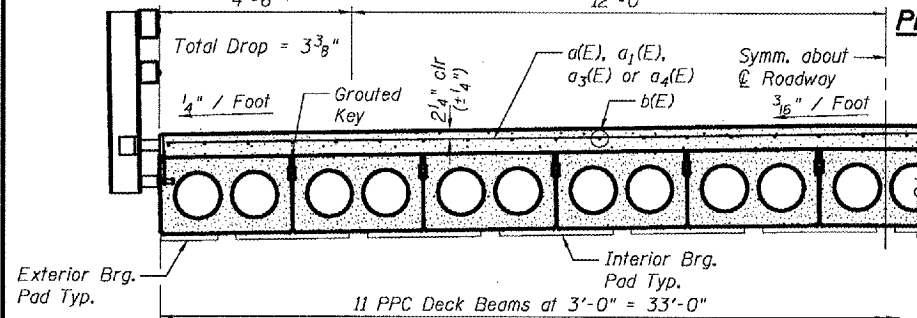


FASCIA BEAM

Rail anchorage shall be cast in precast beams. See typical section for dimensions, strand pattern, and bar callouts not shown. Formwork necessary for the wearing surface may be secured utilizing the bottom rail inserts and/or additional inserts cast into the beam. Drilling into the beam will not be permitted.



PLAN



HALF CROSS SECTION

NOTES

Prestressing steel shall be uncoated high strength, low relaxation 7-wire strand, Grade 270. The nominal diameter shall be 1/2" and the nominal cross-sectional area shall be 0.153 sq. in. Lifting loops shall be 2 - 1/2" phi - 270 ksi strands, as shown. The 1" phi rods in the transverse tie assembly shall be tightened to a snug fit and the threads set. Pockets that receive transverse tie bar on outside shall be filled with grout after transverse tie assembly is in place. The bearing seat surfaces shall be adjusted by shimming to assure firm and even bearing. Two 1/8" fabric adjusting shims of the dimensions of the Exterior Bearing Pad shall be provided for each bearing. Keyway surfaces shall be cleaned to remove form oil or other bond breaking material prior to shipment of the beams. Cleaning shall be done by sandblasting the keyway areas between top of the beam and the bottom edge of the key. Corrosion Inhibitor, according to Article 1020.05(b)(12) and 1021.06 of the Standard Specifications, shall be used in the concrete for precast prestressed concrete deck beams. Required Release Strength, f'ci, shall be 4000 p.s.i. The top surface of the beams shall be finished according to the IDOT Manual for Fabrication of Precast Prestressed Concrete Products. See sheet 7 of 10 for Rail Anchorage Locations. Non-prestressing steel shall conform to the requirements of ASTM A706 or 60 (IL modified). See Special Provisions.

DESIGNED	P.S.J.
CHECKED	S.J.B.
DRAWN	Drew Christopher
CHECKED	P.S.J. S.J.B.

DATE	December 8, 2006
EXAMINED	John A. Morris ENGINEER OF STRUCTURAL SERVICES
PASSED	Ralph E. Anderson ENGINEER OF BRIDGES AND STRUCTURES

BILL OF MATERIAL

Precast Prestressed Conc. Deck Bms. (21" Depth)	Sq. Ft.	2,646
-------------------------------------------------	---------	-------

DECK BEAM DETAILS
IL 122 / SUGAR CREEK
TAZEWELL COUNTY
SN 090-0058