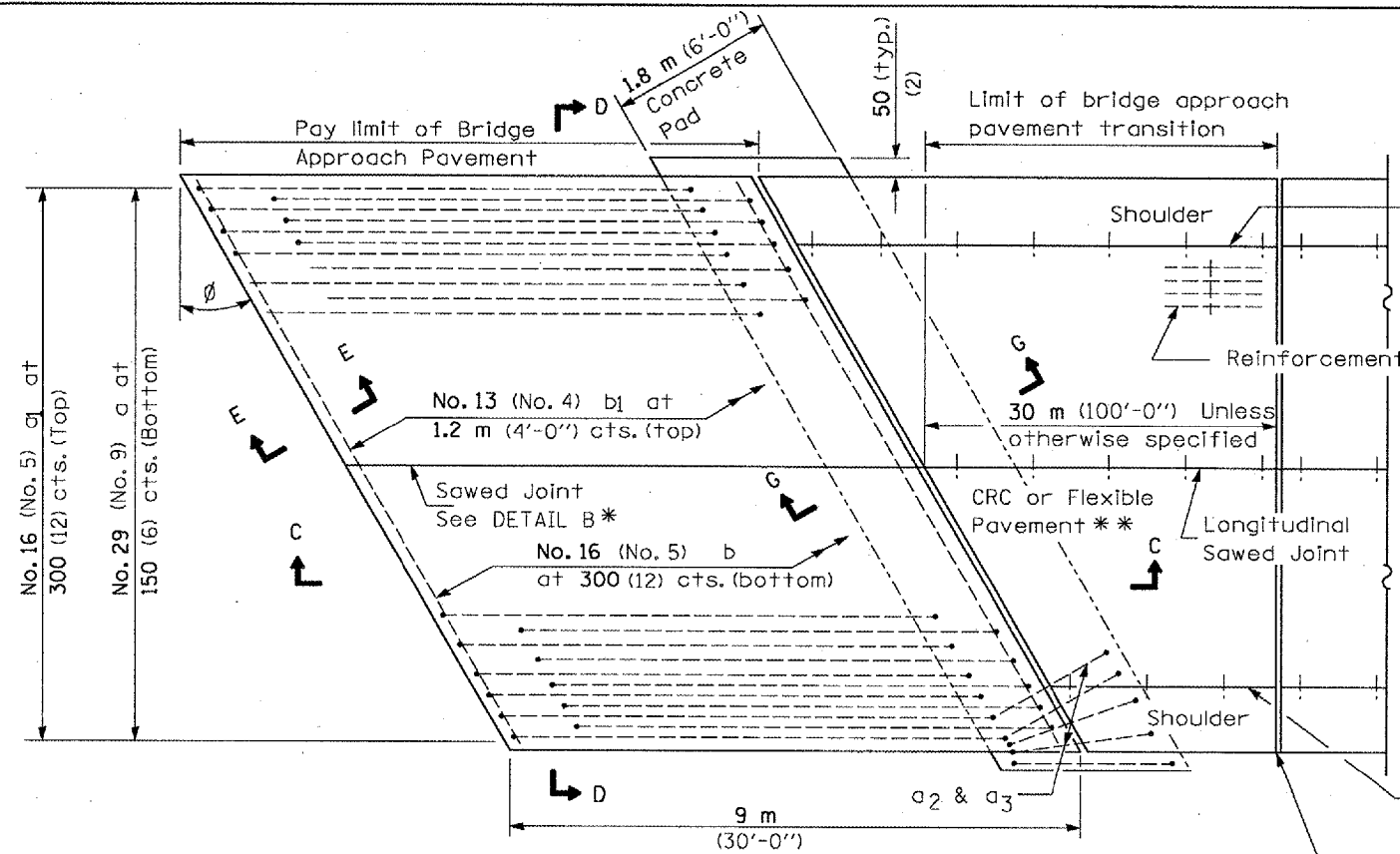
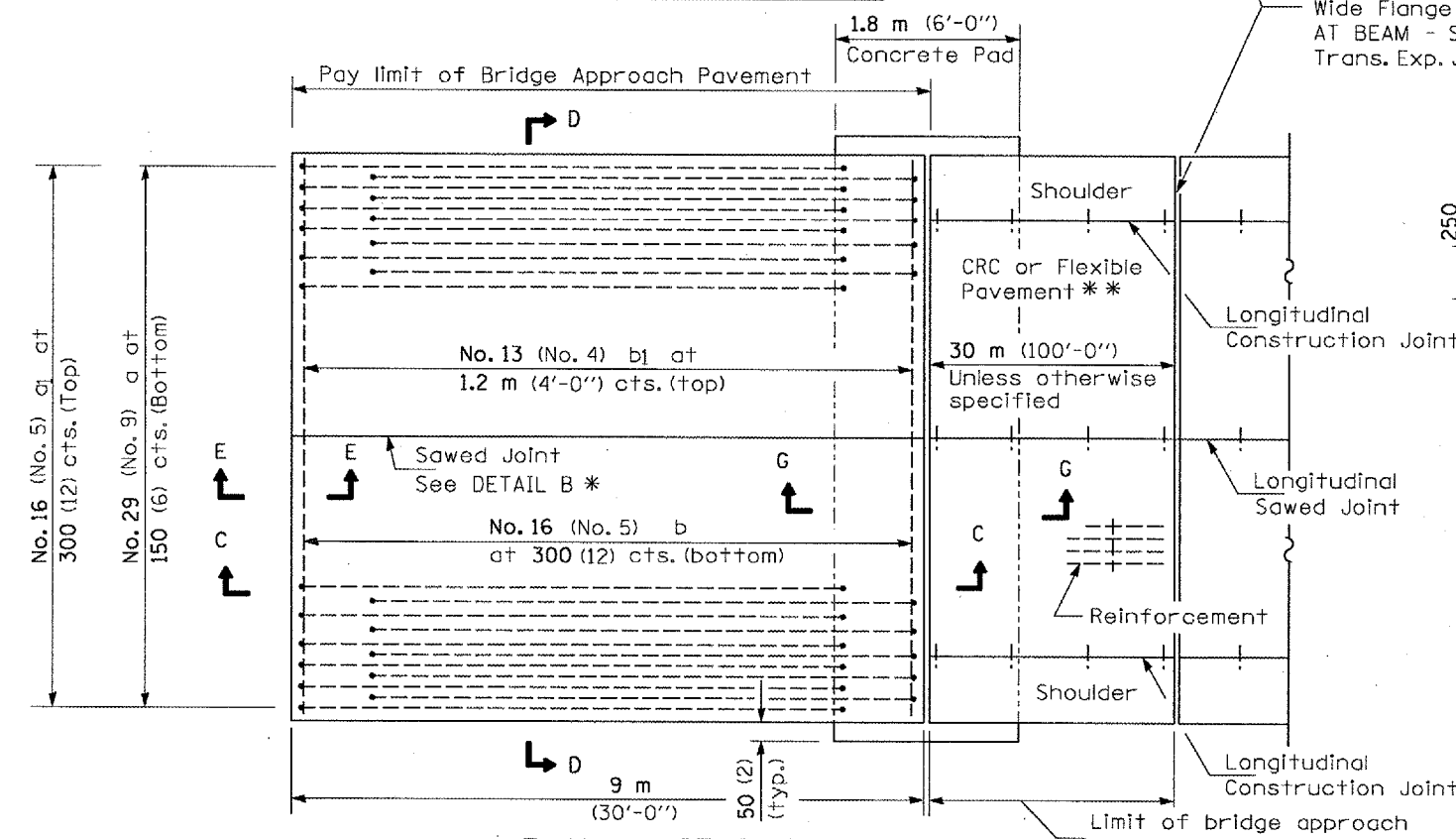


| | | | | |
|---------------------|----------|------------------|--------------|-----------|
| F.A.P. RTE. | SECTION | COUNTY | TOTAL SHEETS | SHEET NO. |
| 701 | (1198-3) | TAZEWELL | 29 | 21A |
| STA. | TO STA. | | | |
| FED. ROAD DIST. NO. | ILLINOIS | FED. AID PROJECT | | |

NEW CONSTRUCTION



PLAN - WITH SKEW



PLAN - WITHOUT SKEW

* Saw ϕ or lane edge if poured two or more lane widths at a time.
 ** Omit Reinforcement, tie bars and Long. sawed Jt. for Flexible Pavement.

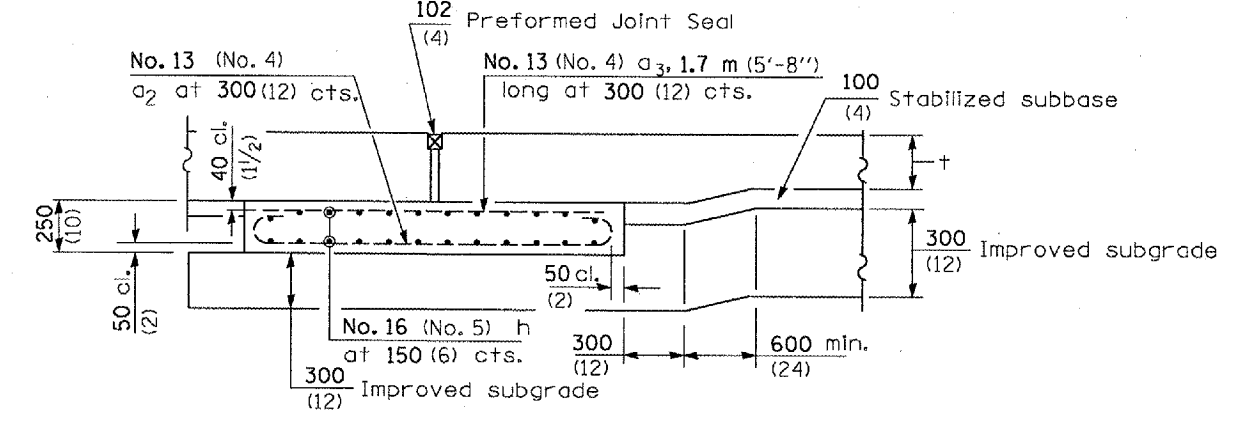
Longitudinal Construction Joint

Rigid Pavement only:

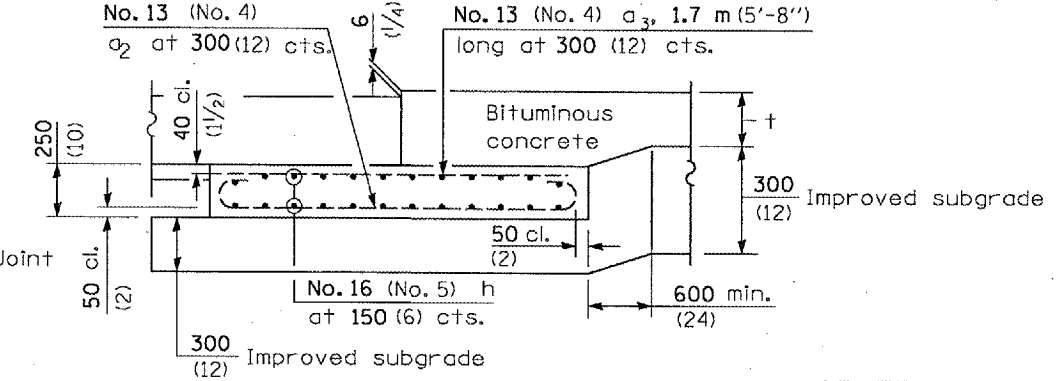
Wide Flange Beam Terminal Joint (See DETAIL AT BEAM - Standard 421101 or 421106) or 50 (2) Trans. Exp. Joint as detailed on Standard 420001.

3 (1/8) x 40 (1/2) Sawn groove
 Fill with poured joint sealer

DETAIL B*
 (Reinforcement Not Shown)



SECTION G-G - RIGID PAVEMENT
 (Showing reinforcement)



SECTION G-G - FLEXIBLE PAVEMENT
 (Showing reinforcement)

GENERAL NOTES

THICKNESS- "t" = Thickness of Pavement.
 See Standard 421001 for reinforcement details not shown.
 See Standard 420001 for joint details not shown.
 All dimensions are in millimeters (inches) unless otherwise shown.

BRIDGE APPROACH PAVEMENT (SPECIAL)