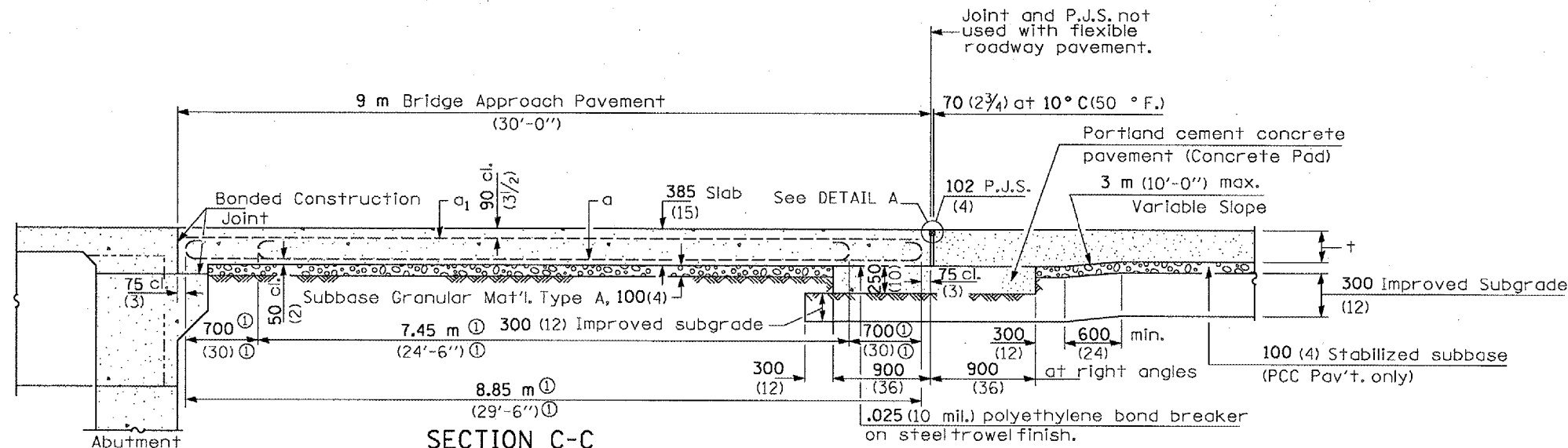
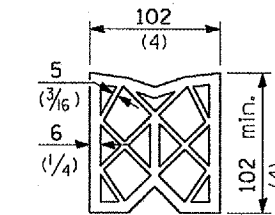


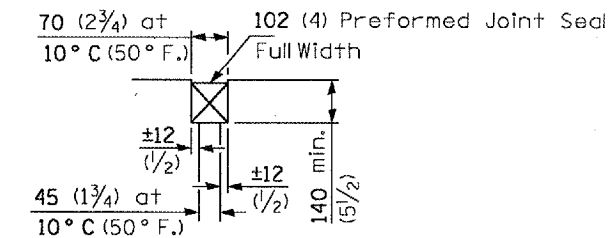
CONTRACT NO. 68484				
F.A.P. RTE.	SECTION	COUNTY	TOTAL SHEETS	SHEET NO.
701	(119B-31)	TAZEWELL	29	21C
STA.	TO STA.			
FED. ROAD DIST. NO.	ILLINOIS	FED. AID PROJECT		



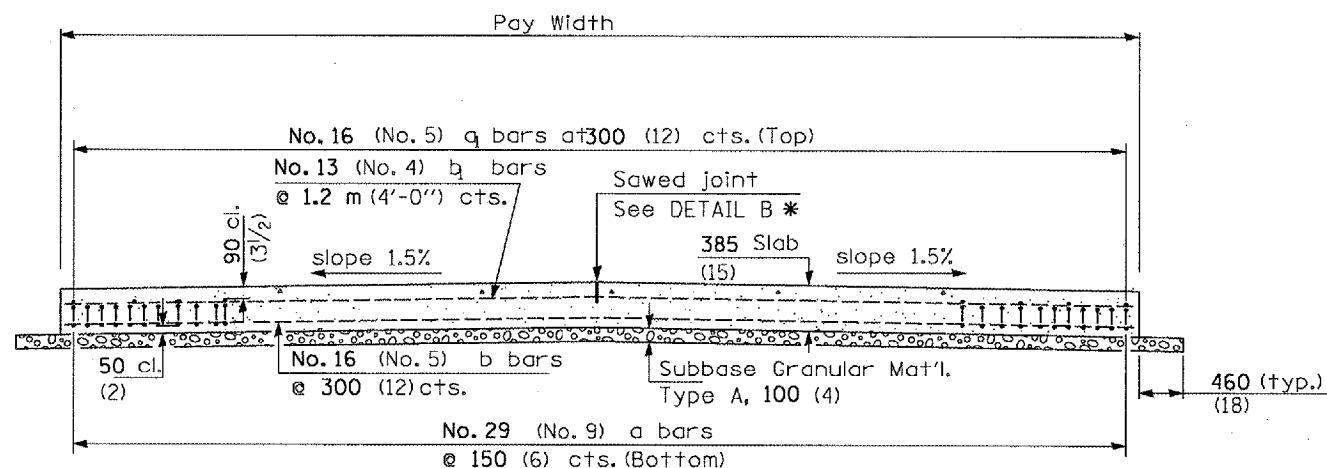
① Stagger No. 29 (No. 9) a bars as shown on plan - full width



PREFORMED JOINT SEAL



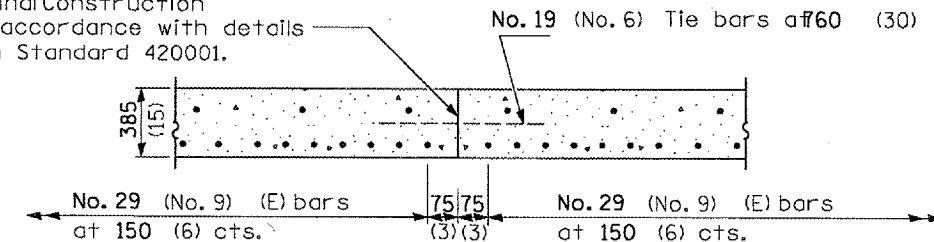
DETAIL A



SECTION D-D

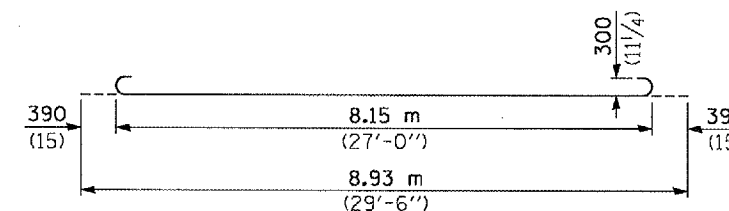
(See Plan for Dimensions not shown)
All reinforcement bars shall be epoxy coated.

Longitudinal Construction Joint in accordance with details shown on Standard 420001.

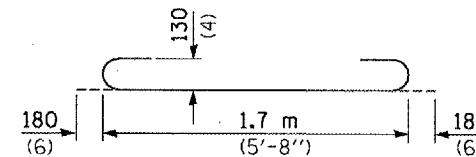


OPTIONAL LONGITUDINAL CONSTRUCTION JOINT

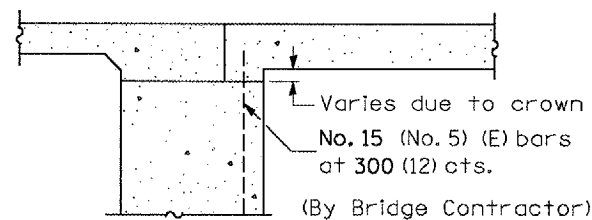
As approved by the Engineer, the Contractor may elect to reduce the widths of pour by use of the Optional Longitudinal Construction Joint shown. Joints shall be located at the edge of a traffic lane.



BAR a

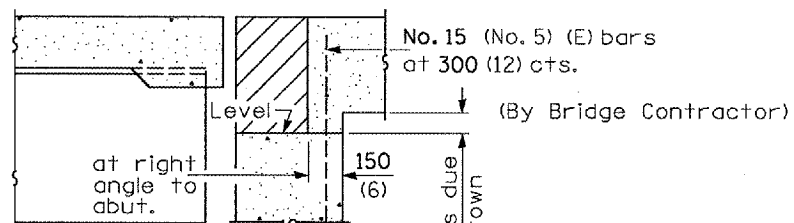


BAR a2



SECTION E-E

(Integral Abutments)



SECTION E-E

(Jointed Abutments)

DESIGN STRESSES
 $f_y = 400 \text{ MPa (60,000 p.s.i.)}$
 $f'_c = 24 \text{ MPa (3,500 p.s.i.)}$
 $n = 8.5$

All dimensions are in millimeters (inches) unless otherwise shown.

BRIDGE APPROACH PAVEMENT (SPECIAL)

(Sheet 3 of 4)