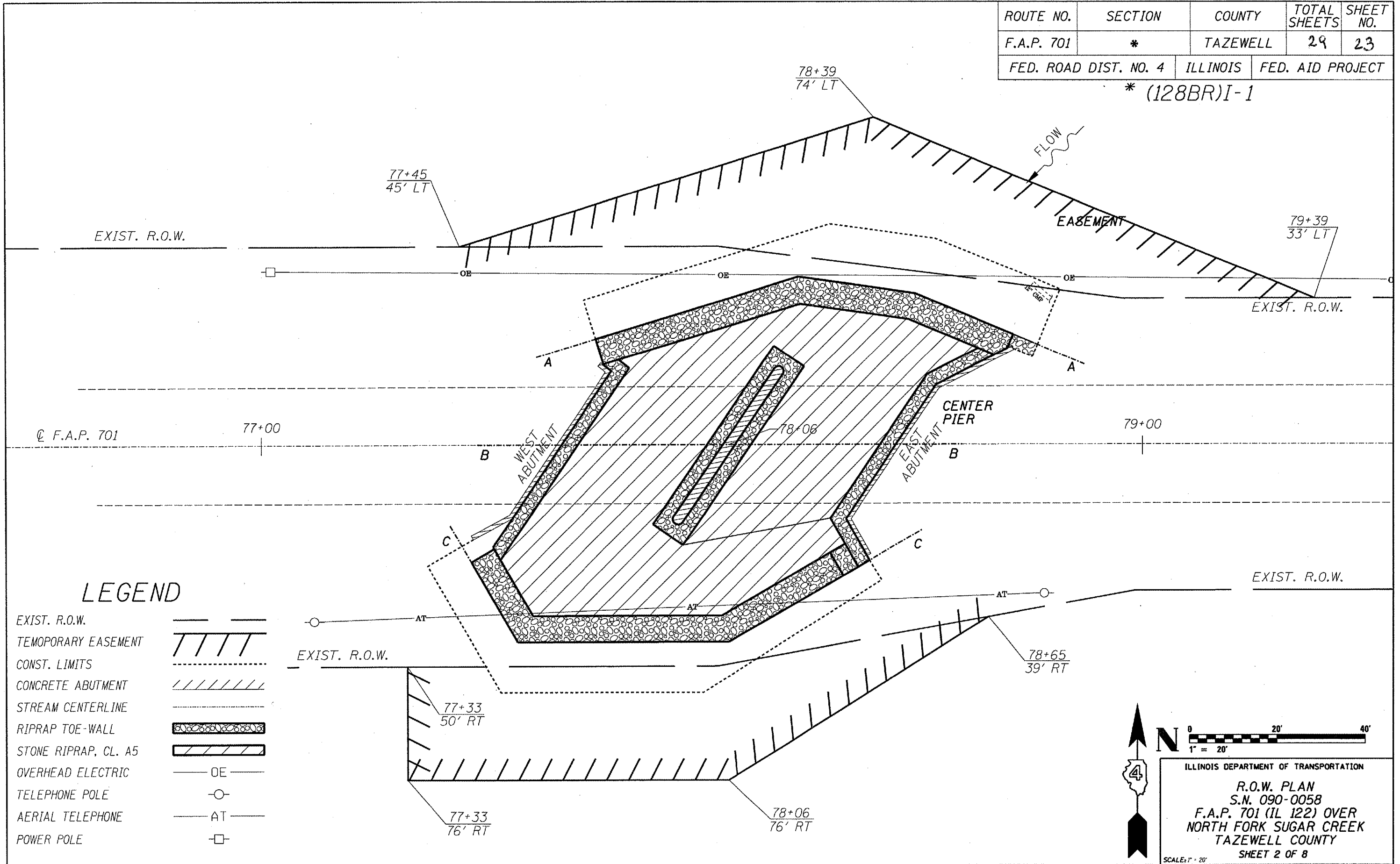


ROUTE NO.	SECTION	COUNTY	TOTAL SHEETS	SHEET NO.
F.A.P. 701	*	TAZEWELL	29	23
FED. ROAD DIST. NO. 4		ILLINOIS	FED. AID PROJECT	

*(128BR)I-1



LEGEND

- EXIST. R.O.W.
- TEMPORARY EASEMENT
- CONST. LIMITS
- CONCRETE ABUTMENT
- STREAM CENTERLINE
- RIPRAP TOE-WALL
- STONE RIPRAP, CL. A5
- OVERHEAD ELECTRIC
- TELEPHONE POLE
- AERIAL TELEPHONE
- POWER POLE

N

0 20' 40'
1" = 20'

ILLINOIS DEPARTMENT OF TRANSPORTATION

R.O.W. PLAN
S.N. 090-0058
F.A.P. 701 (IL 122) OVER
NORTH FORK SUGAR CREEK
TAZEWELL COUNTY
SHEET 2 OF 8

SCALE: 1" = 20'