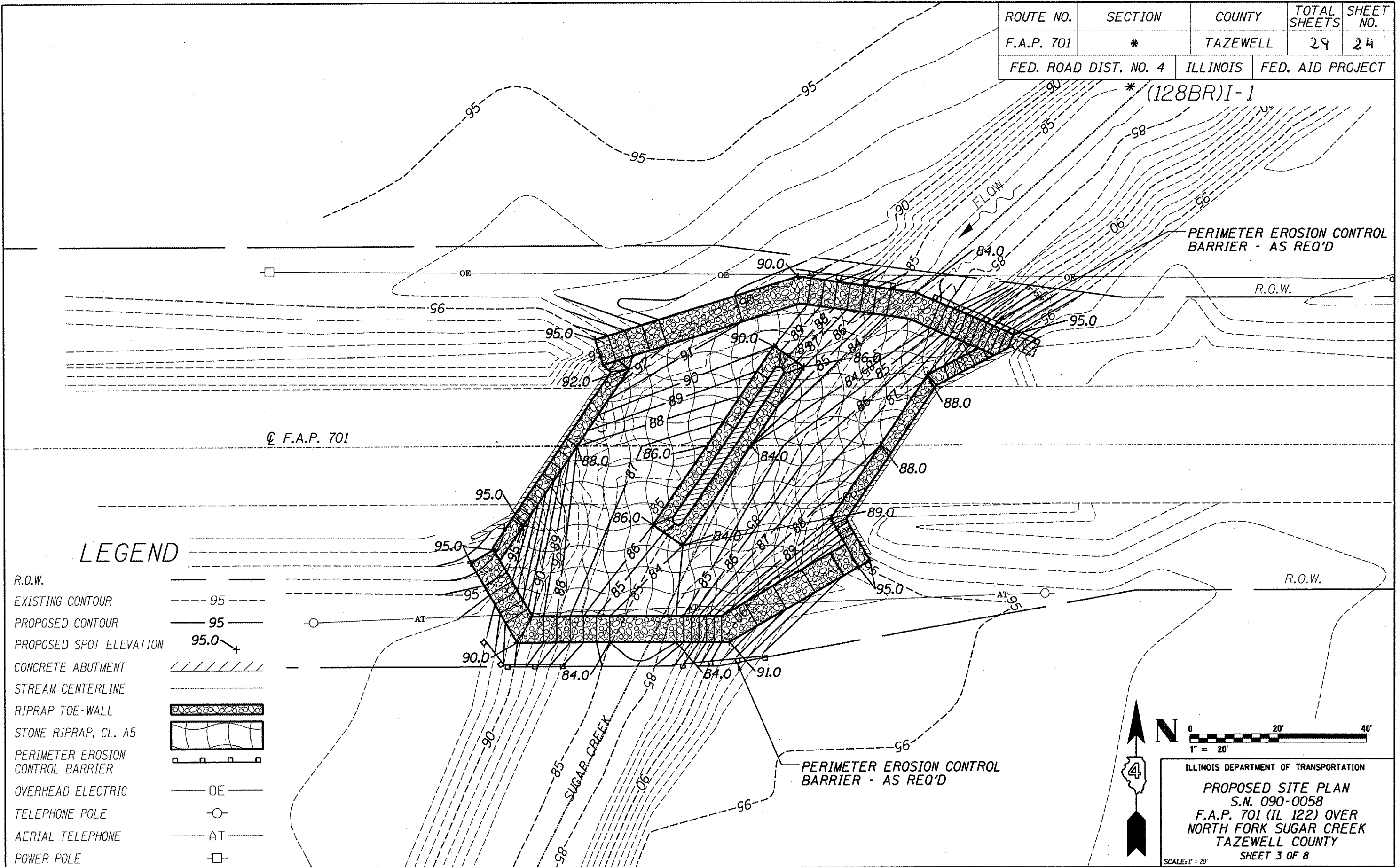
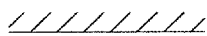





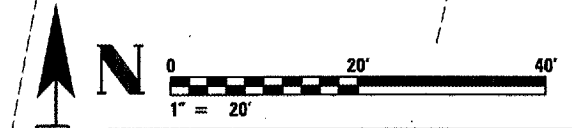
ROUTE NO.	SECTION	COUNTY	TOTAL SHEETS	SHEET NO.
F.A.P. 701	*	TAZEWELL	29	24
FED. ROAD DIST. NO. 4		ILLINOIS	FED. AID PROJECT	

(128BR)I-1



LEGEND

- R.O.W. ————
- EXISTING CONTOUR - - - - 95
- PROPOSED CONTOUR ———— 95
- PROPOSED SPOT ELEVATION 95.0 ↗
- CONCRETE ABUTMENT 
- STREAM CENTERLINE - - - - -
- RIPRAP TOE-WALL 
- STONE RIPRAP, CL. A5 
- PERIMETER EROSION CONTROL BARRIER 
- OVERHEAD ELECTRIC ———— OE ————
- TELEPHONE POLE ———— ○ ————
- AERIAL TELEPHONE ———— AT ————
- POWER POLE ———— □ ————



ILLINOIS DEPARTMENT OF TRANSPORTATION
 PROPOSED SITE PLAN
 S.N. 090-0058
 F.A.P. 701 (IL 122) OVER
 NORTH FORK SUGAR CREEK
 TAZEWELL COUNTY
 SHEET 3 OF 8
 SCALE: 1" = 20'