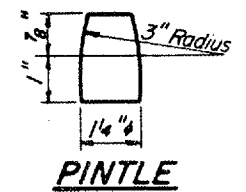
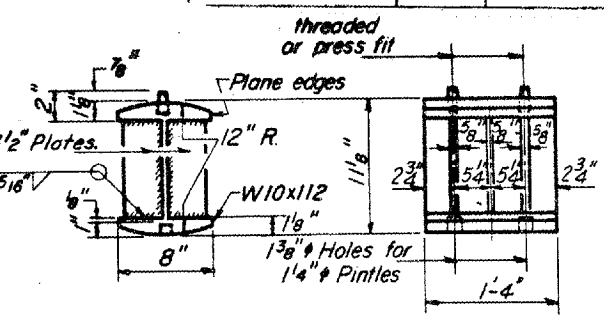
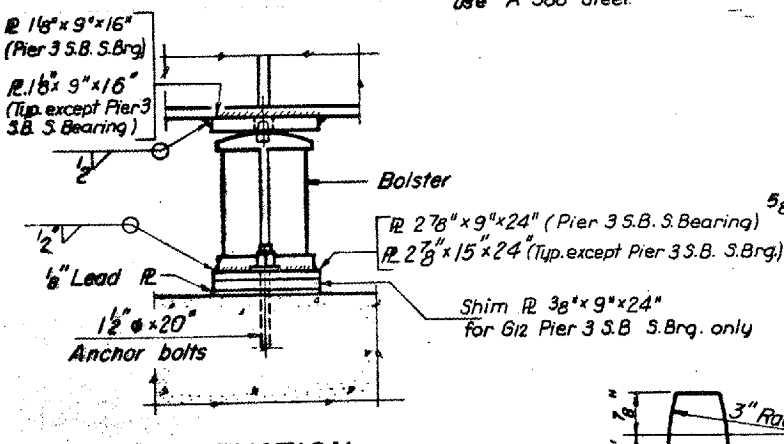
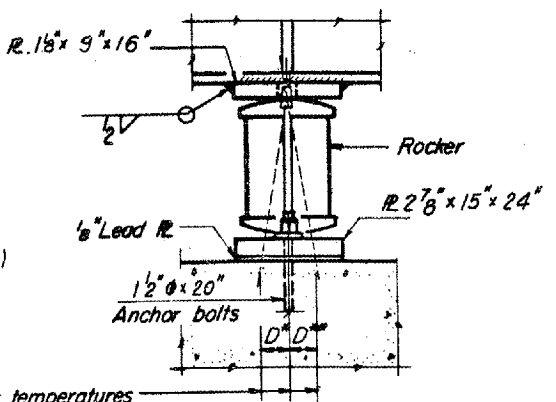
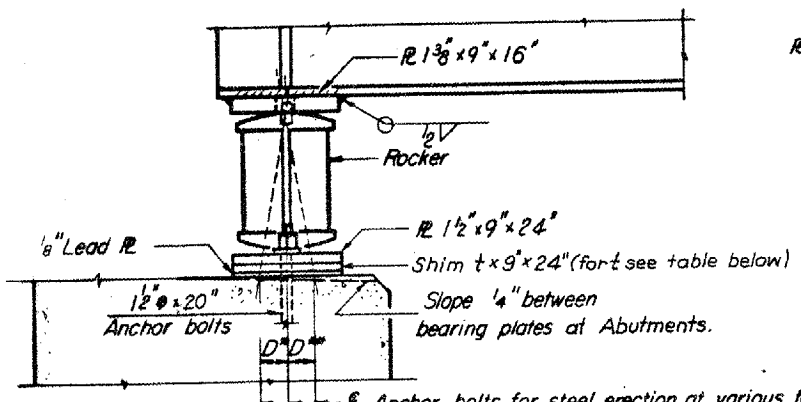


BRIDGE NO 3 & 4 - 072-0114/0115 I 474 OVER KICKAPOO CREEK & RAILROAD

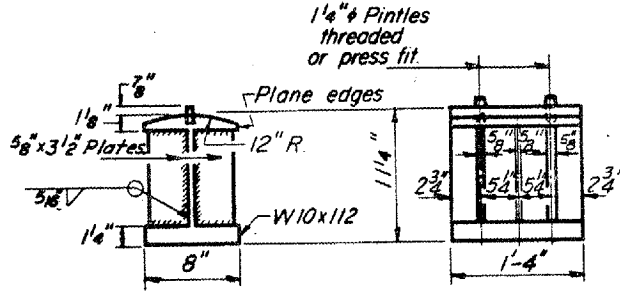
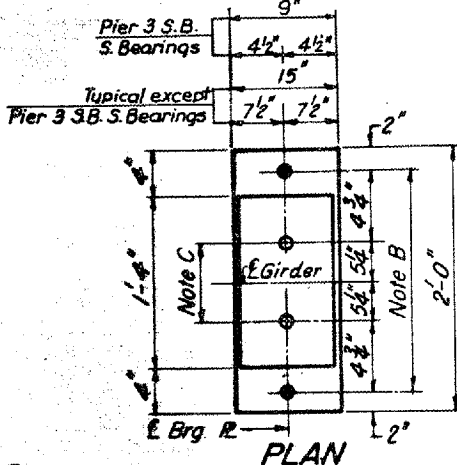
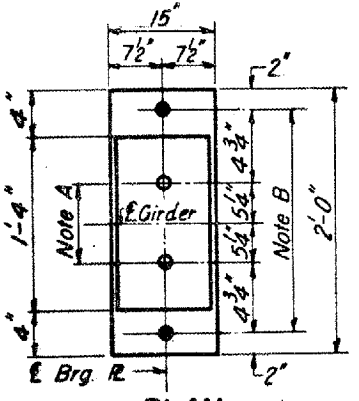
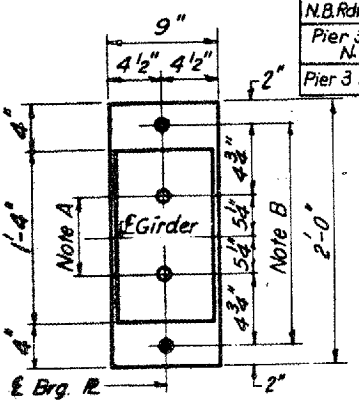
F.A. RTE.	SECTION	COUNTY	TOTAL SHEETS	SHEET NO.
VAR	04 BRDG PNT 07	VARIOUS	17	19a
STA.		TO STA.		
FED. ROAD DIST. NO. 4		ILLINOIS		

NOTE D
For Bearing Type II and III use A-588 Steel.



SHIM PLATE THICKNESS (t)

Location	Girder					
	G2	G3	G4	G5	G6	G7
Pier 4 S.Brg. N.B.Rdwy. N.Brg.	1/8	1/8	1/8	-	-	-
Pier 3 S.B.Rdwy. N.Brg.	-	-	-	1/4	1/4	1/4
Pier 3 S.B.Rdwy. S.Brg.	-	-	-	-	-	3/8



AT ABUTMENTS AND PIER 3 N.B., 3 S.B., N.BRG. & 4

NOTE A
1 3/8" Holes - 1" deep in top R for pintles. Thread or press fit pintles into bottom R.

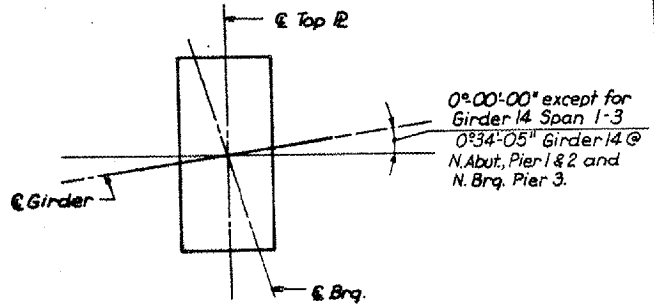
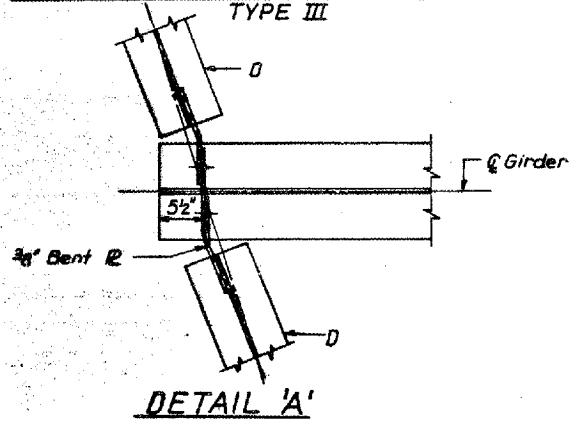
AT PIER 1, 5 & 7 TYPE II

NOTE B
2" Holes for 1 1/2" anchor bolts. 5/16" x 2 1/2" x 2 1/2" R. Washers under nut.

AT PIER 2, 3A, 6 AND PIER 3 S.B. S.BEARINGS TYPE III

NOTE C
1 3/8" Holes 1" deep in top R only for 1 1/4" pintles.

BEARING ASSEMBLY DETAILS

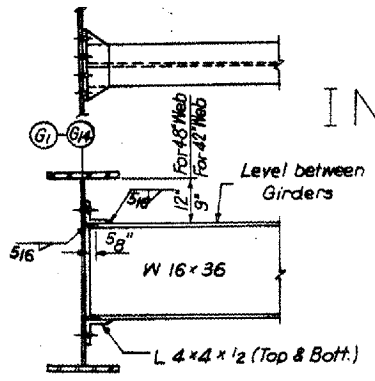
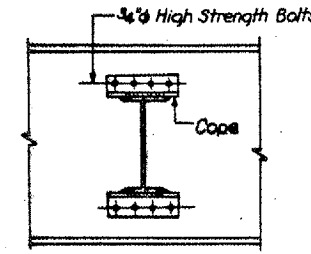
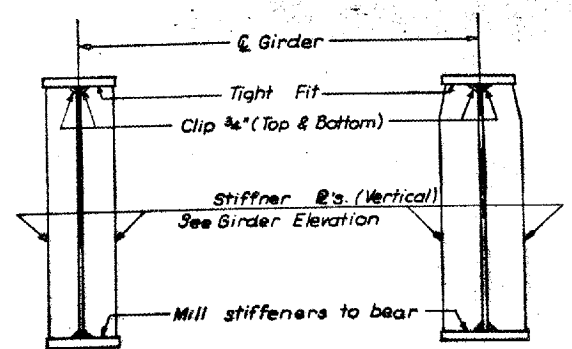
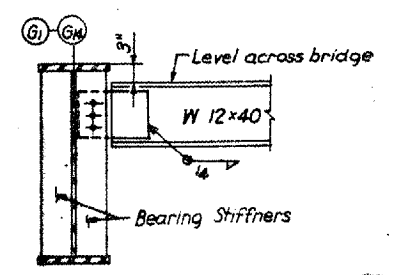


NOTES ON SETTING OF ANCHOR BOLTS AT EXP. BRGS.

- a) D* (Side of brg away from fixed brg)
D* = 1/8" per each 100' of expansion for every 15° fall below the normal temp of 50°F
- D** (Side of brg toward fixed brg)
D** = 1/8" per each 100' of expansion for every 15° rise above the normal temp of 50°F

NOTE E
S. Bearing Pier 3 or N. Bearing Pier 4 should have a hold down Strap. See Detail on Sheet 11.

- b) After Girder have been erected and dimensions D* or D** determined, holes shall be drilled and anchor bolts shall be grouted in place. All fixed anchor bolts may be built into the masonry.



FOR INFORMATION ONLY

STATE OF ILLINOIS
DEPARTMENT OF TRANSPORTATION
STRUCTURAL STEEL
F.A.I. ROUTE 474
OVER
KICKAPOO CREEK & B.N. R.R.
STA. 67 + 00.00

Add SHEET