

F.A.I. RTE.	SECTION	COUNTY	TOTAL SHEETS	SHEET NO.
74	(10-4,5)MRS	VERMILION	13	1

STATE OF ILLINOIS
DEPARTMENT OF TRANSPORTATION
DIVISION OF HIGHWAYS

**PROPOSED
HIGHWAY PLANS**

FAI ROUTE 74 (I-74)
SECTION (10-4,5)MRS
VERMILION COUNTY

C-95-073-06

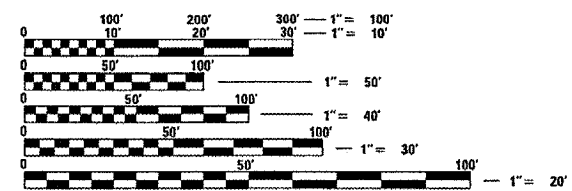
**HOT-MIX ASPHALT INLAY ON EB & WB EXIT RAMP
AT FAS 331 (OAKWOOD) INTERCHANGE**

FOR INDEX OF SHEETS, SEE SHEET NO. 2
FOR SUMMARY OF QUANTITIES, SEE SHEET NO. 4



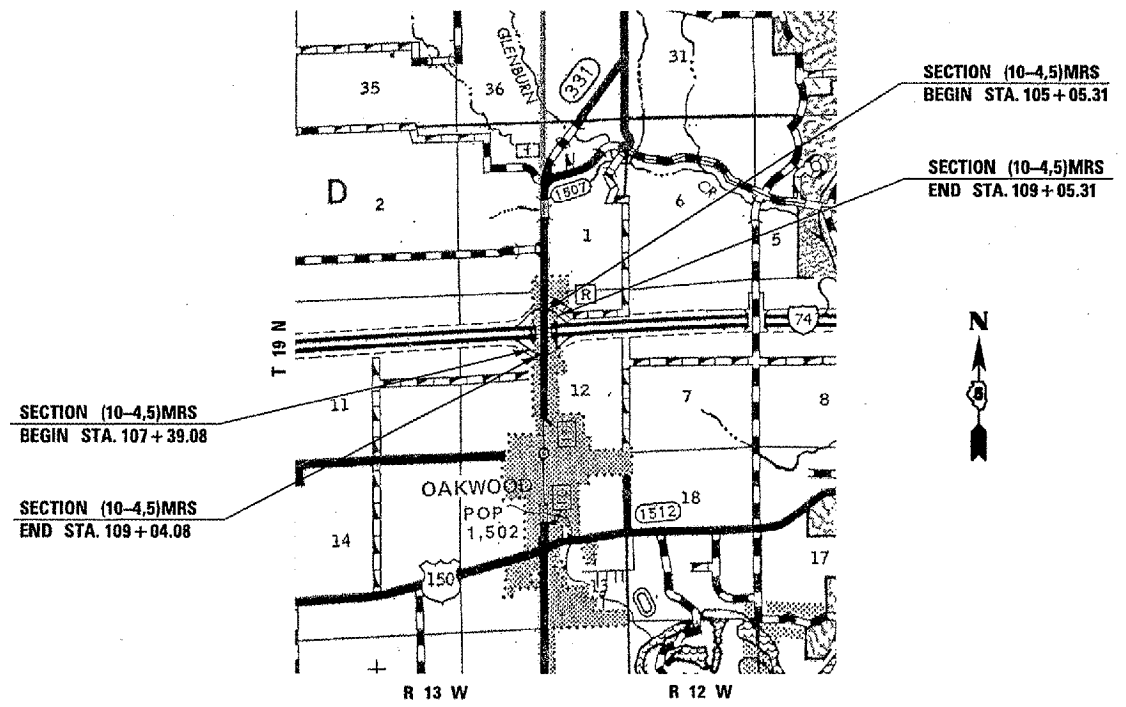
CURRENT ADT
RAMP "A" (EB) 2,250 (2006)
RAMP "D" (WB) 1,950 (2006)

DESIGN DESIGNATION
NA



FULL SIZE PLANS HAVE BEEN PREPARED USING STANDARD ENGINEERING SCALES. REDUCED SIZED PLANS WILL NOT CONFORM TO STANDARD SCALES. IN MAKING MEASUREMENTS ON REDUCED PLANS, THE ABOVE SCALES MAY BE USED.

J.U.L.I.E.
JOINT UTILITY LOCATION INFORMATION FOR EXCAVATION
1-800-892-0123



TOTAL LENGTH OF SECTION & PROJECT = 565.00 FEET = 0.107 MILES
NET LENGTH OF SECTION & PROJECT = 565.00 FEET = 0.107 MILES

STATE OF ILLINOIS
DEPARTMENT OF TRANSPORTATION
DIVISION OF HIGHWAYS

SUBMITTED *06/24/06*

Eric E. Heron
DEPUTY DIRECTOR OF HIGHWAYS, REGION ENGINEER

Milton R. Sees
INTERIM ENGINEER OF DESIGN AND ENVIRONMENT

Milton R. Sees
DIRECTOR OF HIGHWAYS, CHIEF ENGINEER

**PRINTED BY THE AUTHORITY
OF THE STATE OF ILLINOIS**

PROJECT ENGINEER: TIM BRANDENBURG (217)465-4181
SQUAD LEADER: MICHAEL LEROY
DESIGNER: DANA HENNESSY

FAI RTE.	SECTION	COUNTY	TOTAL SHEETS	SHEET NO.
74	110-4,51MRS	VERMILION	13	2

INDEX OF SHEETS

- 1 COVER SHEET
- 2 INDEX OF SHEETS / HIGHWAY STANDARDS
- 3 GENERAL NOTES
- 4 SUMMARY OF QUANTITIES
- 5 SCHEDULE OF QUANTITIES
- 6 EXISTING & PROPOSED TYPICAL CROSS SECTIONS FOR
FAI 74 EXIT RAMPS A & D AT FAS 331 (OAKWOOD)
- 7 FAS 331 (C.H. 10) INTERCHANGE PLAN SHEET
- 8-9 STRIPING DETAIL SHEETS FOR FAI 74 EXIT RAMPS A & D
- 10 DETAIL OF CHANGEABLE MESSAGE SIGN SUGGESTED
LOCATIONS AND MESSAGES
- 11 TYPICAL APPLICATION OF TRAFFIC CONTROL DEVICES
FOR RAMP CLOSURE
- 12 HOT-MIX ASPHALT SURFACE REMOVAL (COLD MILLING) - REQUIRED SURFACE TEXTURE
- 13 TYPICAL APPLICATION OF PAVEMENT MARKINGS FOR INTERSTATE
AND MULTI-LANE DIVIDED HIGHWAYS

LIST OF HIGHWAY STANDARDS

- 000001-04 STANDARD SYMBOLS, ABBREVIATIONS AND PATTERNS
- 001006 DECIMAL OF AN INCH AND OF A FOOT
- 701201-02 LANE CLOSURE, 2L, 2W, DAY ONLY, FOR SPEEDS \geq 45 MPH
- 702001-06 TRAFFIC CONTROL DEVICES
- 780001-01 TYPICAL PAVEMENT MARKINGS

F.A.I. RTE.	SECTION	COUNTY	TOTAL SHEETS	SHEET NO.
74	(10-4,5MRS	VERMILION	13	3

GENERAL NOTES

G.N.-100

ENGLISH UNITS OF MEASUREMENT SHALL GOVERN OVER AND SUPERSEDE ANY METRIC UNITS SHOWN IN THIS CONTRACT. WHERE INCLUDED, METRIC UNITS ARE FOR INFORMATION ONLY.

G.N.-406

THE QUANTITIES INCLUDED IN THE PLANS FOR HOT-MIX ASPHALT RESURFACING ARE INTENDED TO GIVE THE COVERAGE SHOWN ON THE TYPICAL CROSS SECTIONS. IT IS NOT INTENDED TO INCREASE THE THICKNESS OF THE HOT-MIX ASPHALT MIXTURE IN ORDER TO USE ALL OF THE QUANTITIES INCLUDED IN THE CONTRACT.

G.N.-406.05b

ALL LEVELING BINDER OR BINDER SHALL BE GIVEN A FOG COAT OF PRIME BEFORE THE SURFACE COURSE IS PLACED WHEN DIRECTED BY THE ENGINEER.

THE FOG COAT WILL BE PAID FOR AT THE CONTRACT UNIT PRICE PER GALLON FOR POLYMERIZED BITUMINOUS MATERIAL (PRIME COAT) AND NO ADDITIONAL COMPENSATION WILL BE ALLOWED.

G.N. -406H

MIXTURE REQUIREMENTS

THE FOLLOWING MIXTURE REQUIREMENTS ARE APPLICABLE FOR THIS PROJECT:

LOCATION	EXIT RAMPS A & D	EXIT RAMPS A & D
MIXTURE USE	POLY LEVEL BINDER	POLYMER SURFACE
AC/PG	SBS PG 70-22	SBS PG 70-22
RAP % (MAX)	10	10
DESIGN AIR VOIDS	4.0% @ Ndes=90	4.0% @ Ndes=90
MIX COMP(GRADATION)	IL 9.5	IL 9.5
FRICITION AGGREGATE	MIX C	MIX D

G.N.-440 (SPECIAL)

WHEN MILLING THE EXISTING ASPHALT OVERLAY ON EACH RAMP, THE CONTRACTOR SHALL ALSO TEXTURE THE UNDERLYING PAVEMENT IN ORDER TO PROVIDE A BONDING SURFACE FOR THE SUBSEQUENT HOT-MIX ASPHALT OVERLAY. THE TEXTURE PATTERN SHALL BE AS SHOWN IN THE PLAN DETAIL FOR "HOT-MIX ASPHALT SURFACE REMOVAL (COLD MILLING) - REQUIRED SURFACE TEXTURE", AND INCLUDED IN THE COST OF HOT-MIX ASPHALT SURFACE REMOVAL, 2 1/2".

F.A.I. RTE.	SECTION	COUNTY	TOTAL SHEETS	SHEET NO.
74	110-4,5MRS	VERMILION	13	4

SUMMARY OF QUANTITIES

LOCATION OF WORK:

FAI 74
 OAKWOOD INTERCHANGE
 EB EXIT RAMP "A"
 STATION 107+39.08
 TO
 STATION 109+04.08
 VERMILION COUNTY
 100% STATE
 1000 - 2A

FAI 74
 OAKWOOD INTERCHANGE
 WB EXIT RAMP "D"
 STATION 105+05.31
 TO
 STATION 109+05.31
 VERMILION COUNTY
 100% STATE
 1000 - 2A

CONSTRUCTION TYPE CODE:

CODE NO.	PAY ITEM	UNIT	TOTAL QUANTITY	QUANTITY	QUANTITY
40600115	POLYMERIZED BITUMINOUS MATERIALS (PRIME COAT)	GALLON	151.0	55.0	96.0
40600845	POLYMERIZED LEVELING BINDER (MACHINE METHOD), N90	TON	85.0	31.0	54.0
40600990	TEMPORARY RAMP	SQ YD	182.0	93.0	89.0
40603545	POLYMERIZED HOT-MIX ASPHALT SURFACE COURSE, MIX "D", N90	TON	128.0	47.0	81.0
44000159	HOT-MIX ASPHALT SURFACE REMOVAL, 2 1/2"	SQ YD	1,509.0	549.0	960.0
67100100	MOBILIZATION	L SUM	1.0	0.5	0.5
70100450	TRAFFIC CONTROL AND PROTECTION, STANDARD 701201	L SUM	1.0	0.5	0.5
* 78000200	THERMOPLASTIC PAVEMENT MARKING - LINE 4"	FOOT	864.0	194.0	670.0
* 78000400	THERMOPLASTIC PAVEMENT MARKING - LINE 6"	FOOT	365.0	190.0	175.0
* 78000600	THERMOPLASTIC PAVEMENT MARKING - LINE 12"	FOOT	291.0	156.0	135.0
* 78000650	THERMOPLASTIC PAVEMENT MARKING - LINE 24"	FOOT	72.0	36.0	36.0
X7015005	CHANGEABLE MESSAGE SIGN	CAL DA	39.0	17.0	22.0

* SPECIALTY ITEM

F.A.I. RTE.	SECTION	COUNTY	TOTAL SHEETS	SHEET NO.
74	110-4,5MRS	VERMILION	13	5

SCHEDULE OF QUANTITIES

THERMOPLASTIC PAVEMENT MARKING - LINE 4"

EB EXIT RAMP "A"

STATION	TO	STATION	OFFSETS	COLOR	TYPE	FEET
107+39.08		107+60.23	15' LT, 14' LT	YELLOW	SOLID	21.2
107+60.23		108+00.00	14' LT, 14.5' LT	YELLOW	SOLID	39.8
108+00.00		108+24.16	14.5' LT, 15' LT	YELLOW	SOLID	24.2
107+39.08		107+60.23	1' LT, 0' LT	WHITE	SOLID	21.2
107+60.23		108+25.16	0' LT	WHITE	SOLID	64.9
108+25.16		108+47.25	0' RT, 3' RT	WHITE	SOLID	22.1
TOTAL =						194.0

WB EXIT RAMP "D"

STATION	TO	STATION	OFFSETS	COLOR	TYPE	FEET
105+63.00		105+83.50	3' LT, 0' LT	WHITE	SOLID	20.5
105+83.50		109+05.31	0' LT	WHITE	SOLID	321.8
105+78.50		105+90.30	15.5' RT, 14' RT	YELLOW	SOLID	12.0
105+90.30		109+05.31	14' RT	YELLOW	SOLID	315.0
TOTAL =						670.0

THERMOPLASTIC PAVEMENT MARKING - LINE 6"

EB EXIT RAMP "A"

STATION	TO	STATION	OFFSETS	COLOR	TYPE	FEET
108+62.00		108+91.50	11' LT, 46' LT	WHITE	SOLID	47.0
108+62.00		109+12.00	11' LT, 29' RT	WHITE	SOLID	64.5
108+91.50		109+12.00	46' LT, 29' RT	WHITE	SOLID	78.0
TOTAL =						190.0

WB EXIT RAMP "D"

STATION	TO	STATION	OFFSETS	COLOR	TYPE	FEET
104+99.25		105+17.50	23' LT, 46' RT	WHITE	SOLID	71.0
104+99.25		105+46.00	23' LT, 11' RT	WHITE	SOLID	58.0
105+17.50		105+46.00	46' RT, 11' RT	WHITE	SOLID	45.5
TOTAL =						175.0

THERMOPLASTIC PAVEMENT MARKING - LINE 12"

EB EXIT RAMP "A"

STATION	TO	STATION	OFFSETS	COLOR	TYPE	FEET
108+70.00		108+85.00	7.5' LT, 33' LT	WHITE	SOLID	29.0
108+76.50		108+87.50	4' LT, 23' LT	WHITE	SOLID	22.0
108+82.50		108+85.00	0.5' LT, 5' LT	WHITE	SOLID	5.0
108+88.00		108+92.00	4' RT, 4' LT	WHITE	SOLID	9.0
108+94.00		108+95.00	8' RT, 6' RT	WHITE	SOLID	3.0
108+88.00		108+94.50	39' LT, 35.5' LT	WHITE	SOLID	8.0
108+85.00		108+97.00	33' LT, 26' LT	WHITE	SOLID	15.0
108+88.00		109+00.00	23' LT, 16.5' LT	WHITE	SOLID	15.0
108+90.00		109+02.50	13' LT, 6.5' LT	WHITE	SOLID	15.0
108+93.00		109+05.00	3.5' LT, 3' RT	WHITE	SOLID	15.0
108+95.00		109+07.50	6' RT, 13' RT	WHITE	SOLID	15.0
109+05.50		109+10.00	20' RT, 22.5' RT	WHITE	SOLID	5.0
TOTAL =						156.0

WB EXIT RAMP "D"

STATION	TO	STATION	OFFSETS	COLOR	TYPE	FEET
105+02.00		105+13.00	12' LT, 6' LT	WHITE	SOLID	12.0
105+05.00		105+15.50	2.5' LT, 3.5' RT	WHITE	SOLID	12.0
105+07.00		105+18.00	7.5' RT, 13.5' RT	WHITE	SOLID	13.0
105+10.00		105+21.00	17' RT, 23' RT	WHITE	SOLID	13.0
105+12.50		105+23.50	27' RT, 33' RT	WHITE	SOLID	13.0
105+13.00		105+14.00	6' LT, 8' LT	WHITE	SOLID	3.0
105+15.50		105+19.50	3.5' RT, 4' LT	WHITE	SOLID	9.0
105+22.00		105+24.50	5' RT, 0' RT	WHITE	SOLID	6.0
105+21.00		105+24.50	23' RT, 15' RT	WHITE	SOLID	9.0
105+27.50		105+30.00	8.5' RT, 3' RT	WHITE	SOLID	6.0
105+23.50		105+35.50	33.5' RT, 6' RT	WHITE	SOLID	30.0
105+38.00		105+41.50	17' RT, 9' RT	WHITE	SOLID	9.0
TOTAL =						135.0

THERMOPLASTIC PAVEMENT MARKING - LINE 24"

EB EXIT RAMP "A"

STATION	TO	STATION	OFFSETS	COLOR	TYPE	FEET
108+63.00		108+76.00	35' LT, 23' LT	WHITE	SOLID	18.0
108+71.50		108+81.00	14' RT, 1' LT	WHITE	SOLID	18.0
TOTAL =						36.0

WB EXIT RAMP "D"

STATION	TO	STATION	OFFSETS	COLOR	TYPE	FEET
105+28.00		105+36.50	2' RT, 14' LT	WHITE	SOLID	18.0
105+34.00		105+46.50	21' RT, 34' RT	WHITE	SOLID	18.0
TOTAL =						36.0

TEMPORARY RAMP

EB EXIT RAMP "A"

STATION	OFFSETS	SQ YDS
107+39.08	0' LT	15.1
108+74.91	54' LT	17.0
108+96.14	38.5' RT	17.0
109+04.08	EOP	43.3
TOTAL =		93.0

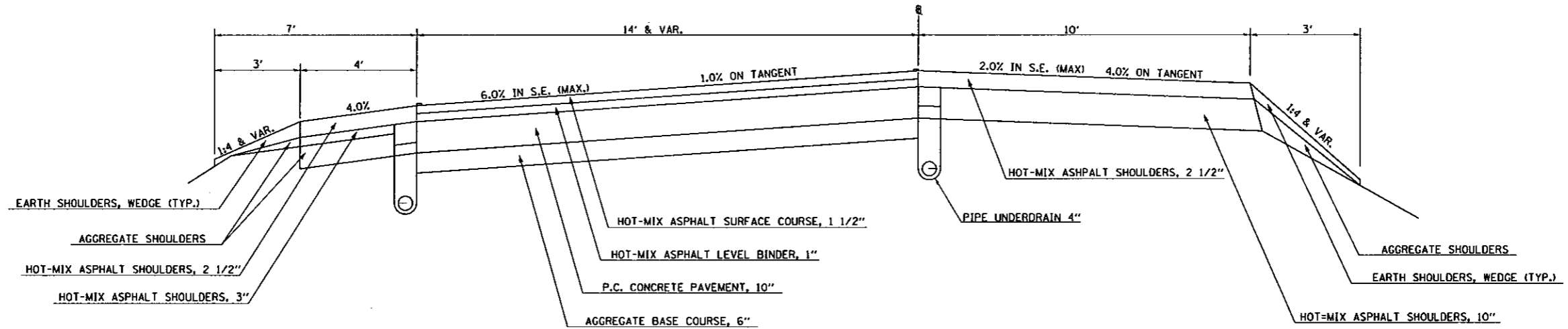
WB EXIT RAMP "D"

STATION	OFFSETS	SQ YDS
105+05.31	EOP	39.4
105+13.03	35' LT	17.0
105+33.85	53' RT	17.0
109+05.31	0' LT	15.1
TOTAL =		89.0

F.A.I. RTE.	SECTION	COUNTY	TOTAL SHEETS	SHEET NO.
74	110-4,5MRS	VERMILION	13	6

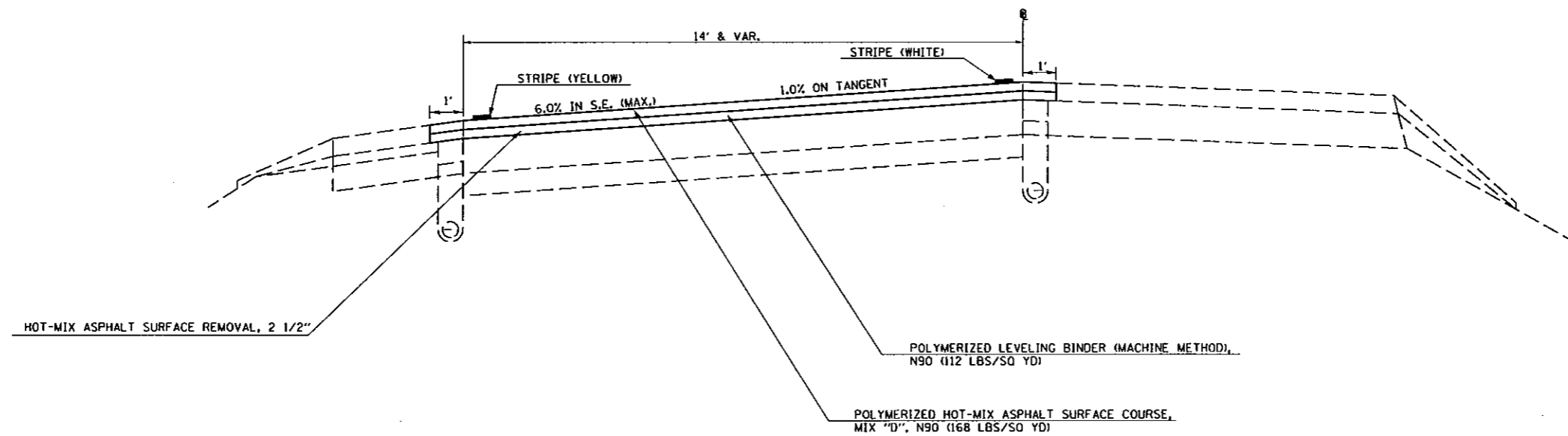
EXISTING TYPICAL CROSS SECTION OF FAI 74 RAMPS @ OAKWOOD EXIT

STATION 107+39.08 TO STATION 109+04.08 (EB EXIT RAMP "A")
 STATION 105+05.31 TO STATION 109+05.31 (WB EXIT RAMP "D")



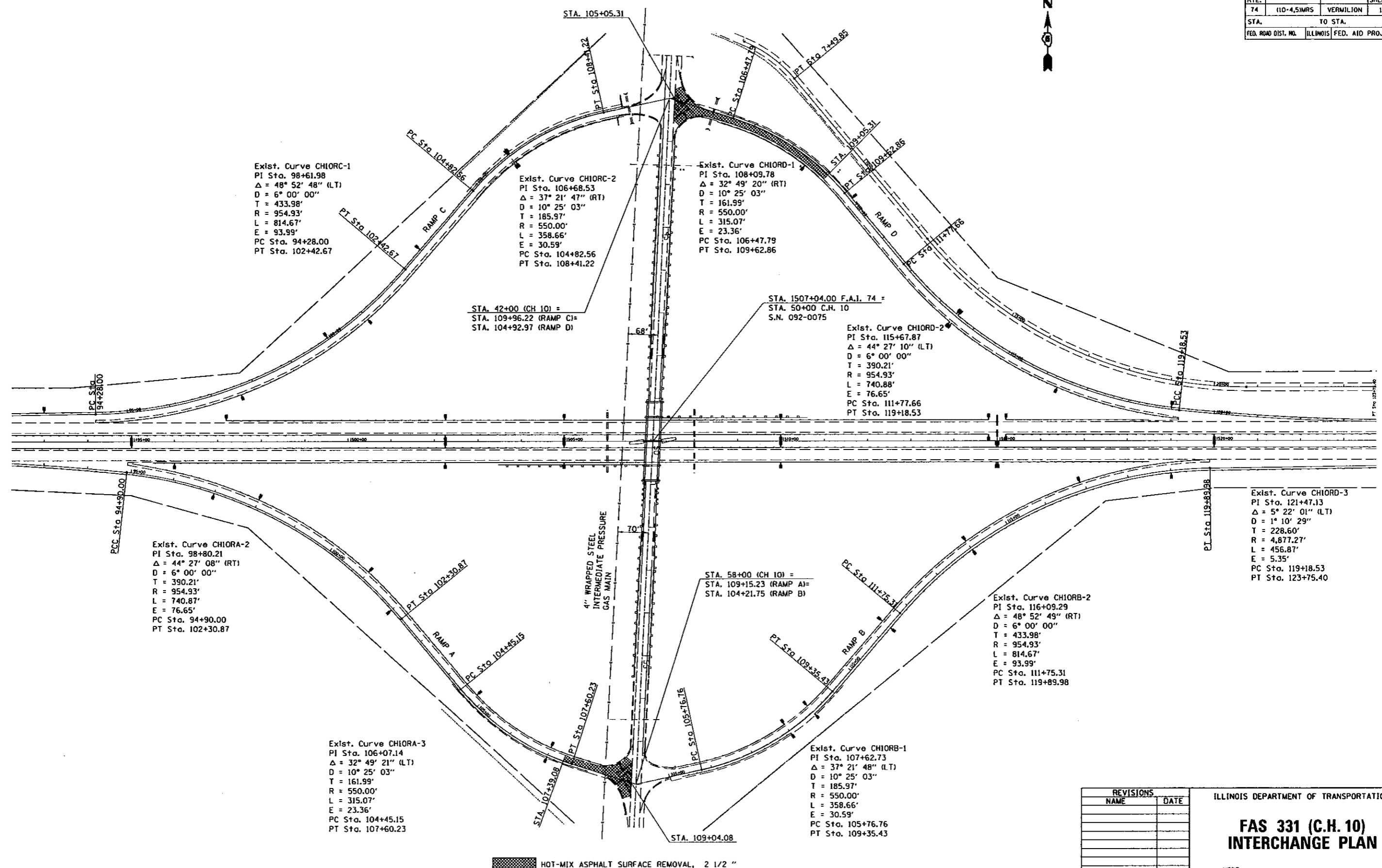
PROPOSED TYPICAL CROSS SECTION OF FAI 74 RAMPS @ OAKWOOD EXIT

STATION 107+39.08 TO STATION 109+04.08 (EB EXIT RAMP "A")
 STATION 105+05.31 TO STATION 109+05.31 (WB EXIT RAMP "D")



PLOT DATE: 10/18/2006
 FILE NAME: c:\pwworkspace\2007\105-4,5MRS\105-4,5MRS.dwg
 PLOT SCALE: 1/8" = 1'-0"
 USER NAME: cramps

F.A.I. RTE.	SECTION	COUNTY	TOTAL SHEETS	SHEET NO.
74	110-4.51MRS	VERMILION	13	7
STA.		TO STA.		
FED. ROAD DIST. NO.		ILLINOIS FED. AID PROJECT		



Exist. Curve CHIORC-1
 PI Sta. 98+61.98
 $\Delta = 48^\circ 52' 48''$ (LT)
 $D = 6^\circ 00' 00''$
 $T = 433.98'$
 $R = 954.93'$
 $L = 814.67'$
 $E = 93.99'$
 PC Sta. 94+28.00
 PT Sta. 102+42.67

Exist. Curve CHIORC-2
 PI Sta. 106+68.53
 $\Delta = 37^\circ 21' 47''$ (RT)
 $D = 10^\circ 25' 03''$
 $T = 185.97'$
 $R = 550.00'$
 $L = 358.66'$
 $E = 30.59'$
 PC Sta. 104+82.56
 PT Sta. 108+41.22

Exist. Curve CHIORD-1
 PI Sta. 108+09.78
 $\Delta = 32^\circ 49' 20''$ (RT)
 $D = 10^\circ 25' 03''$
 $T = 161.99'$
 $R = 550.00'$
 $L = 315.07'$
 $E = 23.36'$
 PC Sta. 106+47.79
 PT Sta. 109+62.86

Exist. Curve CHIORD-2
 PI Sta. 115+67.87
 $\Delta = 44^\circ 27' 10''$ (LT)
 $D = 6^\circ 00' 00''$
 $T = 390.21'$
 $R = 954.93'$
 $L = 740.88'$
 $E = 76.65'$
 PC Sta. 111+77.66
 PT Sta. 119+18.53

Exist. Curve CHIORD-3
 PI Sta. 121+47.13
 $\Delta = 5^\circ 22' 01''$ (LT)
 $D = 1^\circ 10' 29''$
 $T = 228.60'$
 $R = 4,877.27'$
 $L = 456.87'$
 $E = 5.35'$
 PC Sta. 119+18.53
 PT Sta. 123+75.40

Exist. Curve CHIORA-2
 PI Sta. 98+80.21
 $\Delta = 44^\circ 27' 08''$ (RT)
 $D = 6^\circ 00' 00''$
 $T = 390.21'$
 $R = 954.93'$
 $L = 740.87'$
 $E = 76.65'$
 PC Sta. 94+90.00
 PT Sta. 102+30.87

Exist. Curve CHIORA-3
 PI Sta. 106+07.14
 $\Delta = 32^\circ 49' 21''$ (LT)
 $D = 10^\circ 25' 03''$
 $T = 161.99'$
 $R = 550.00'$
 $L = 315.07'$
 $E = 23.36'$
 PC Sta. 104+45.15
 PT Sta. 107+60.23

Exist. Curve CHIORB-1
 PI Sta. 107+62.73
 $\Delta = 37^\circ 21' 48''$ (LT)
 $D = 10^\circ 25' 03''$
 $T = 185.97'$
 $R = 550.00'$
 $L = 358.66'$
 $E = 30.59'$
 PC Sta. 105+76.76
 PT Sta. 109+35.43

Exist. Curve CHIORB-2
 PI Sta. 116+09.29
 $\Delta = 48^\circ 52' 49''$ (RT)
 $D = 6^\circ 00' 00''$
 $T = 433.98'$
 $R = 954.93'$
 $L = 814.67'$
 $E = 93.99'$
 PC Sta. 111+75.31
 PT Sta. 119+89.98

STA. 42+00 (CH 10) =
 STA. 109+96.22 (RAMP C) =
 STA. 104+92.97 (RAMP D)

STA. 1507+04.00 F.A.I. 74 =
 STA. 50+00 C.H. 10
 S.N. 092-0075

STA. 58+00 (CH 10) =
 STA. 109+15.23 (RAMP A) =
 STA. 104+21.75 (RAMP B)

HOT-MIX ASPHALT SURFACE REMOVAL, 2 1/2 "

REVISIONS	
NAME	DATE

ILLINOIS DEPARTMENT OF TRANSPORTATION

**FAS 331 (C.H. 10)
 INTERCHANGE PLAN**

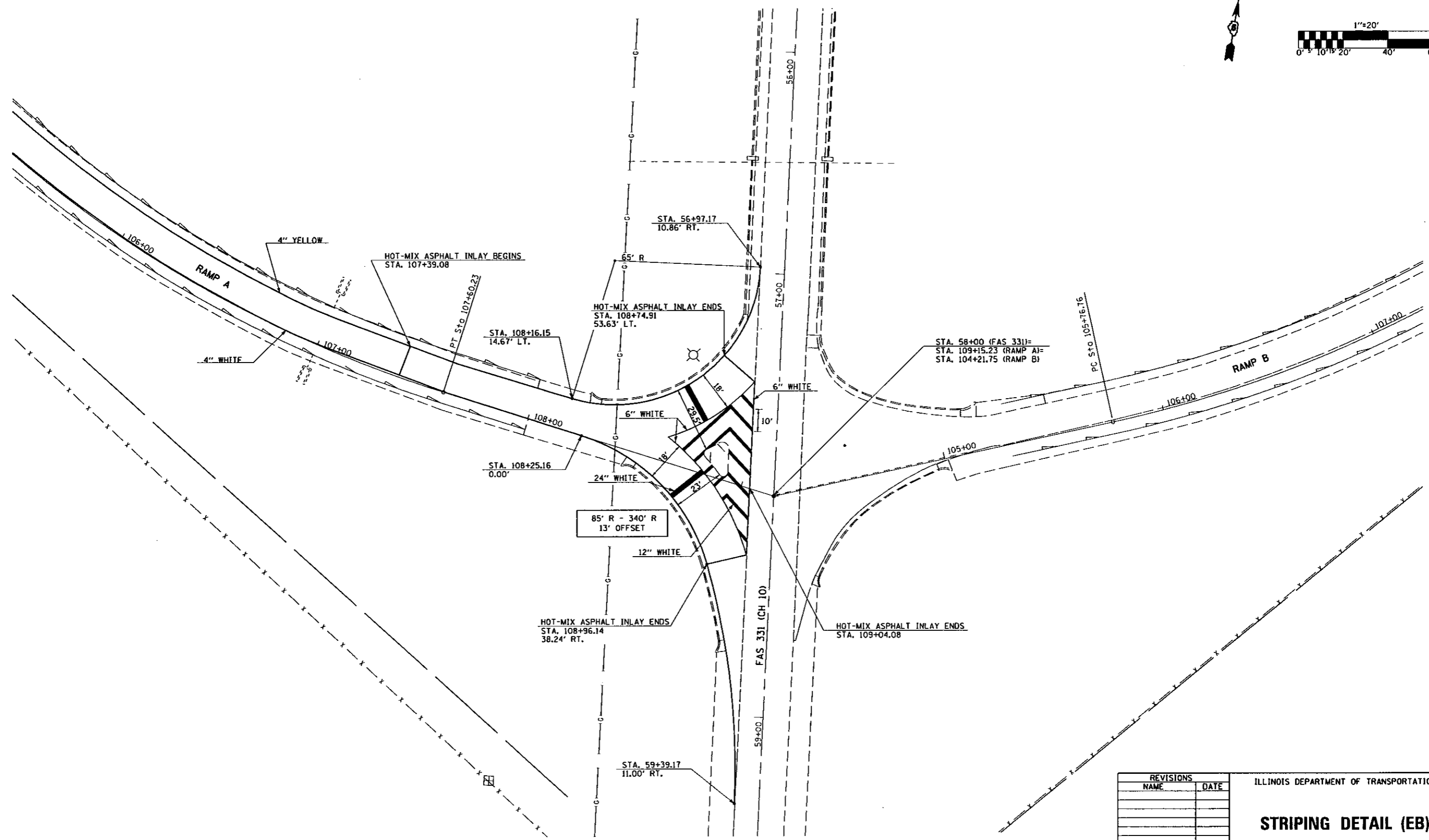
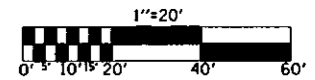
SCALE: VERT. _____
 HORIZ. _____
 DATE _____ DRAWN BY _____
 CHECKED BY _____

PLOT DATE: 10/16/2006
 FILE NAME: c:\pwworkspace\2007\206\108170259\108170259.dwg
 PLOT SCALE: 200/175 = 1/1.14
 USER NAME: eralgna

FAS 331 (C.H. 10) RAMP A AND RAMP B

CONTRACT NO. 70559

F.A.I. RYE	SECTION	COUNTY	TOTAL SHEETS	SHEET NO.
74	110-4.5MRS	VERMILION	13	8
STA.		TO STA.		
FED. ROAD DIST. NO.		ILLINOIS FED. AID PROJECT		



PLOT DATE: 10/16/2006
 FILE NAME: s:\projects\70559\110-4.5MRS\110-4.5MRS.dwg
 PLOT SCALE: 1/8" = 1' / IN.
 USER NAME: draught

REVISIONS	
NAME	DATE

ILLINOIS DEPARTMENT OF TRANSPORTATION

STRIPING DETAIL (EB)

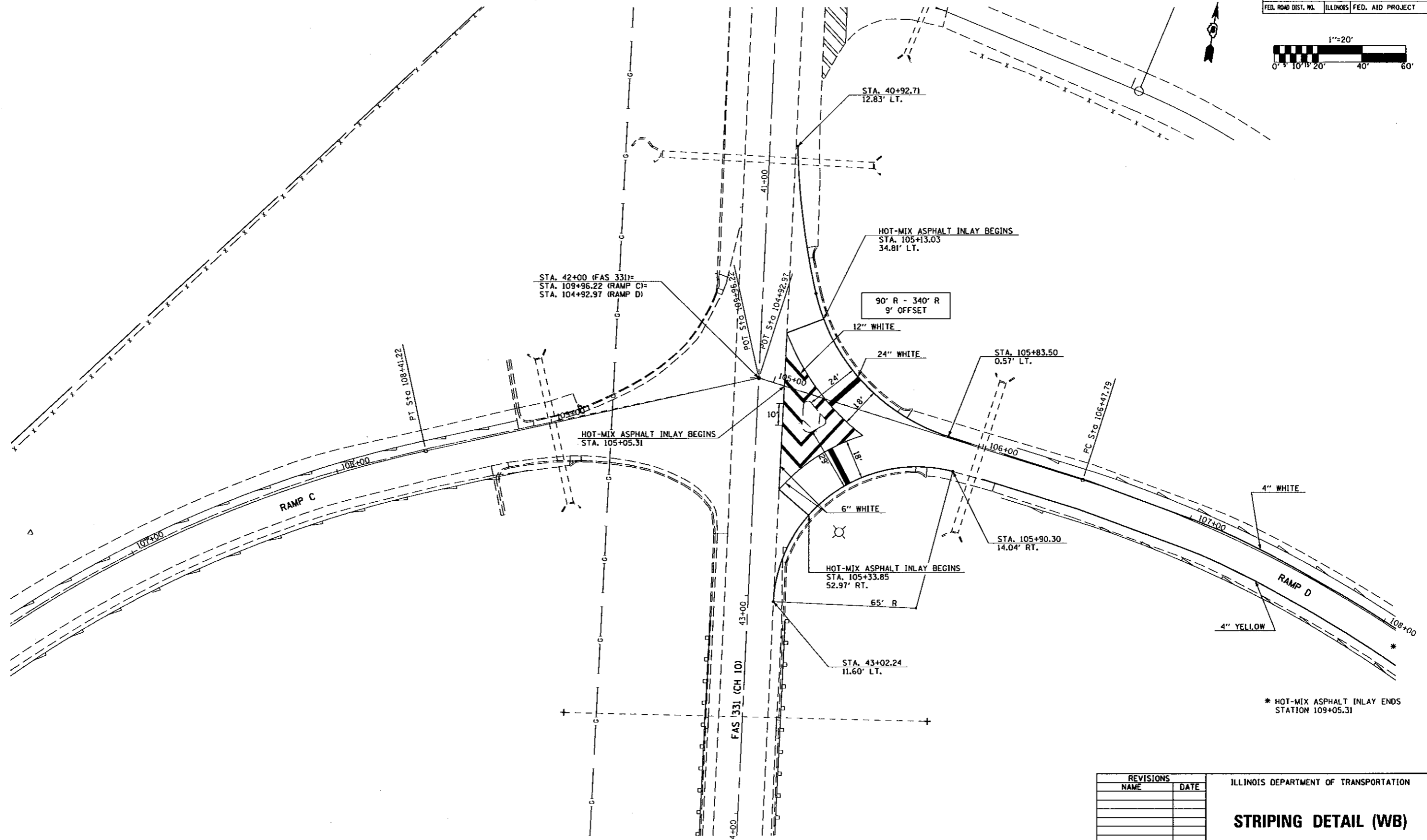
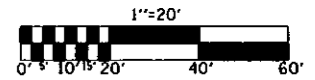
SCALE: VERT. DATE HORIZ. DATE

DRAWN BY: _____
 CHECKED BY: _____

FAS 331 (C.H. 10) RAMP C AND RAMP D

CONTRACT NO. 70559

F.A.I. RYE	SECTION	COUNTY	TOTAL SHEETS	SHEET NO.
74	110-4,5MRS	VERMILION	13	9
STA.		TO STA.		
FED. ROAD DIST. NO.		ILLINOIS FED. AID PROJECT		



* HOT-MIX ASPHALT INLAY ENDS STATION 109+05.31

REVISIONS	
NAME	DATE

ILLINOIS DEPARTMENT OF TRANSPORTATION

STRIPING DETAIL (WB)

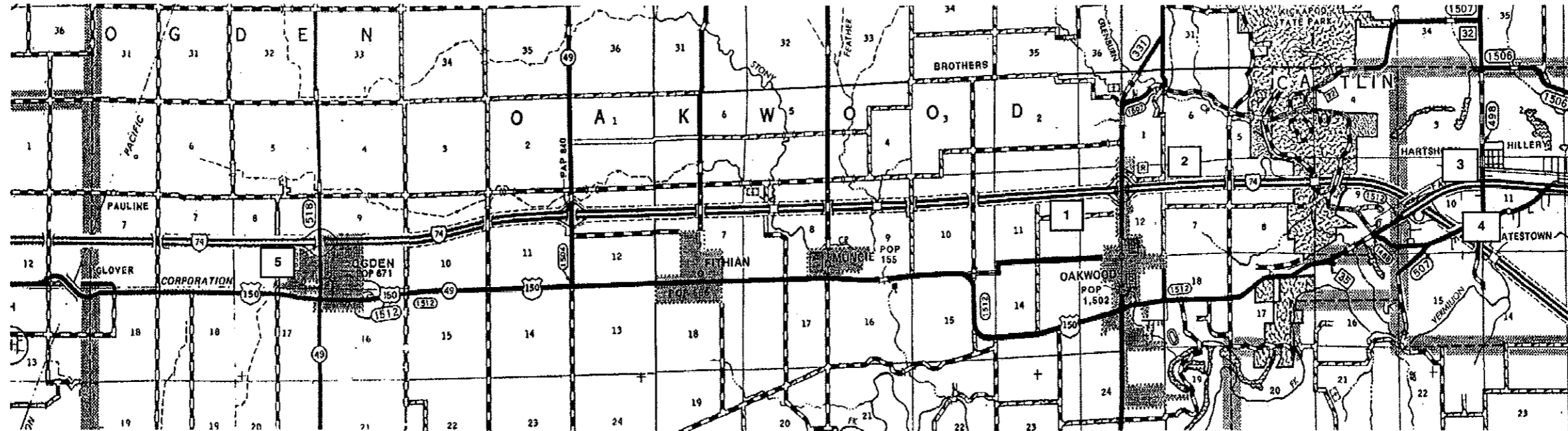
SCALE: VERT. / HORIZ. / DATE

DRAWN BY / CHECKED BY

PLOT DATE: 18/16/2006
 FILE NAME: s:\projects\70559\108\108.dwg
 USER: jmc
 PLOTTER: HP DesignJet 5000

F.A.I. RYE	SECTION	COUNTY	TOTAL SHEETS	SHEET NO.
74	110-4,51MRS	VERMILION	13	10

DETAIL OF CHANGEABLE MESSAGE SIGN SUGGESTED LOCATIONS AND MESSAGES



SEVEN (7) DAYS PRIOR TO START OF CONSTRUCTION

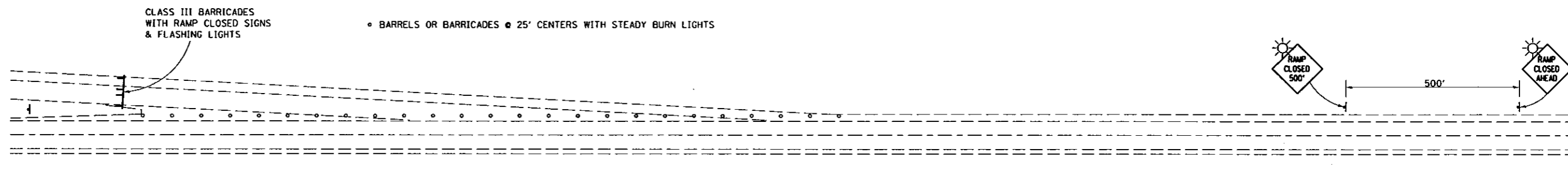
- MESSAGE SIGN #1 (EB): PANEL NO. 1 - OAKWOOD EXIT RAMP CLOSED
PANEL NO. 2 - BEGINNING (DATE)
- MESSAGE SIGN #2 (WB): PANEL NO. 1 - OAKWOOD EXIT RAMP CLOSED
PANEL NO. 2 - BEGINNING (DATE)

FIRST DAY OF CONSTRUCTION

- MESSAGE SIGN #1 (EB): PANEL NO. 1 - OAKWOOD EXIT RAMP CLOSED
PANEL NO. 2 - USE ALTERNATE ROUTE
- MESSAGE SIGN #2 (WB): PANEL NO. 1 - OAKWOOD EXIT RAMP CLOSED
PANEL NO. 2 - USE ALTERNATE ROUTE
- MESSAGE SIGN #3 (WB): PANEL NO. 1 - OAKWOOD EXIT RAMP CLOSED
PANEL NO. 2 - USE US 150 WB
- MESSAGE SIGN #4 (WB): PANEL NO.1 - OAKWOOD EXIT RAMP CLOSED
PANEL NO. 2 - USE US 150 WB
- MESSAGE SIGN #5 (EB): PANEL NO. 1 - OAKWOOD EXIT RAMP CLOSED
PANEL NO. 2 - USE IL 49 SB TO US 150 EB

F.A.I. R.T.E.	SECTION	COUNTY	TOTAL SHEETS	SHEET NO.
74	110-4.5MRS	VERMILION	13	11

TYPICAL APPLICATION OF TRAFFIC CONTROL DEVICES FOR RAMP CLOSURE



NOTE: NOT TO SCALE

GENERAL NOTES

THESE ITEMS WILL NOT BE PAID FOR SEPARATELY BUT SHALL BE CONSIDERED AS INCLUDED IN THE CONTRACT UNIT PRICE FOR TRAFFIC CONTROL & PROTECTION STANDARD 701201.

THE FOLLOWING SIGNS WILL NOT BE NEEDED AS PART OF THIS SET-UP OF TRAFFIC CONTROL AND PROTECTION (SPECIAL):

- 1-WORK ZONE SPEED LIMIT SIGNS
- 2-CONSTRUCTION SPEED LIMIT SIGNS
- 3-END WORK ZONE SPEED LIMIT SIGNS

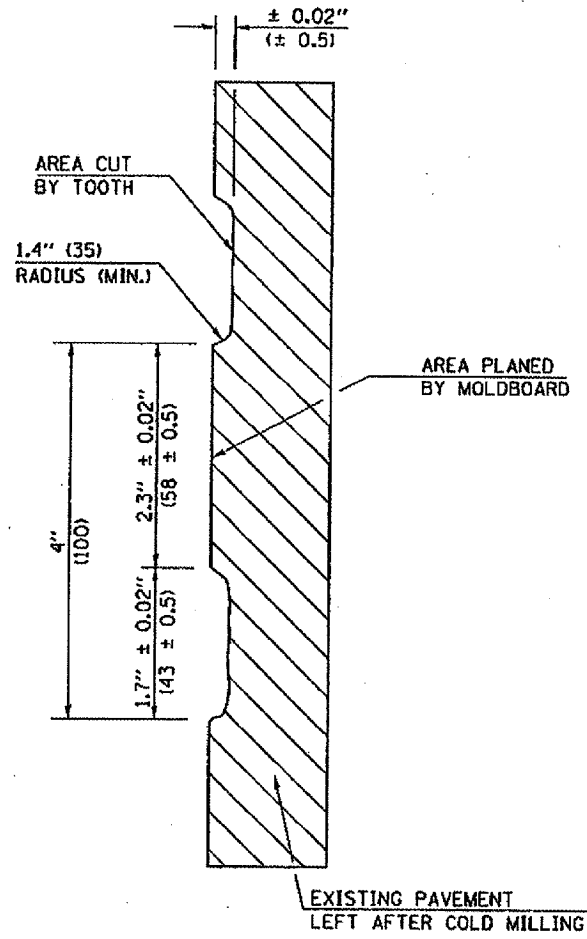
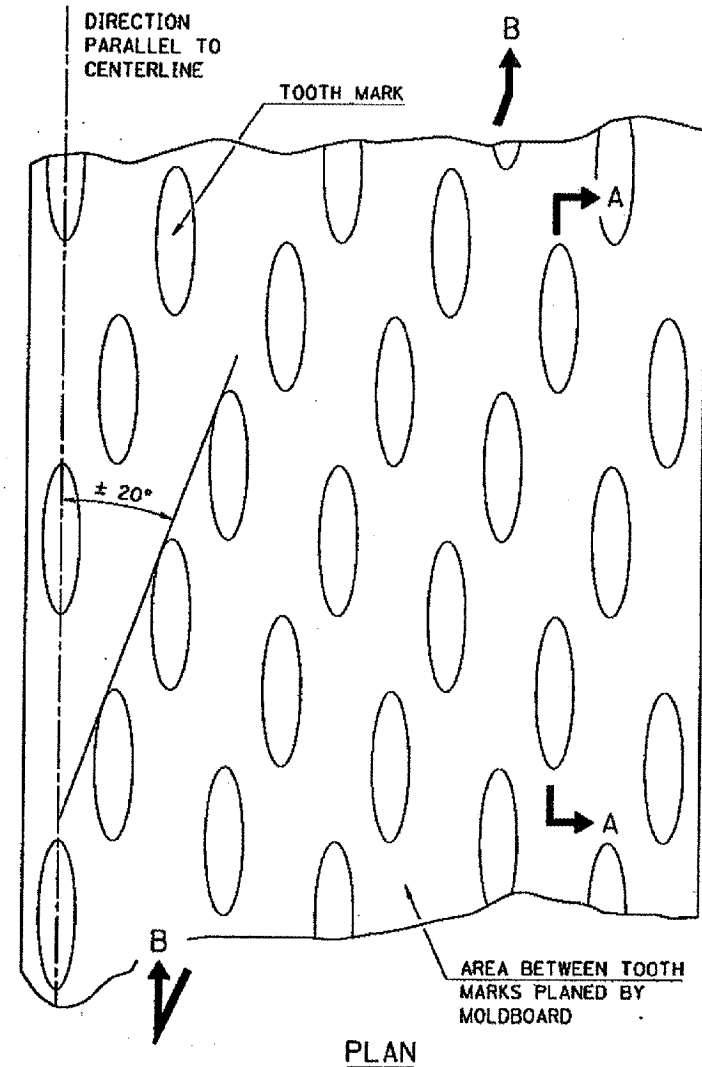
NO LIGHTS ARE REQUIRED IF RAMP IS CLOSED DURING DAYLIGHT HOURS.

CONTACT THE DISTRICT TRAFFIC OPERATIONS ENGINEER AT 217-465-4181, ONE WEEK PRIOR TO CLOSING THE RAMP.

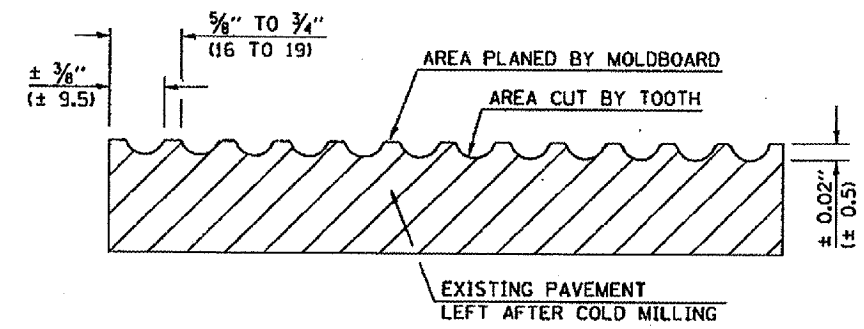
SEE THE CONTRACT SPECIAL PROVISIONS.

F.A.I. RTE.	SECTION	COUNTY	TOTAL SHEETS	SHEET NO.
74	10-4.5MRS	VERMILION	13	12

HOT MIX ASPHALT SURFACE REMOVAL (COLD MILLING) (REQUIRED SURFACE TEXTURE)



SECTION A-A



SECTION B-B PROJECTED
PERPENDICULAR TO CENTERLINE

NOTES

1. COLD MILLING SHALL CONSIST OF TWO PROCESSES: CUTTING WITH CARBIDE TEETH MOUNTED ON A ROTATING DRUM, AND PLANING WITH A MOLDBOARD MOUNTED IMMEDIATELY BEHIND THE CUTTING DRUM.
2. OTHER SIMILAR PATTERNS WILL BE ACCEPTABLE IF THEY CONSIST OF A SMOOTH, FLAT, PLANED SURFACE INTERSPERSED WITH A PATTERN OF DISCONTINUOUS LONGITUDINAL STRIATIONS.

PLOT DATE: 10/17/2008
 FILE NAME: 44000080.dwg
 PLOT SCALE: 1/8" = 1'-0"
 USER: m...

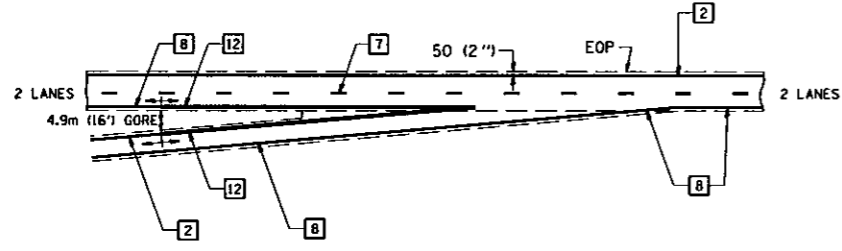
	NAME	DATE	REVISIONS	
			NAME	DATE
DESIGNED	CENTRAL OFFICE			
CHECKED	D.L.P.	03/96	K.A.G.	06/03
CADD NO.	44000080			

ALL DIMENSIONS ARE IN INCHES (MILLIMETERS) UNLESS OTHERWISE SHOWN.

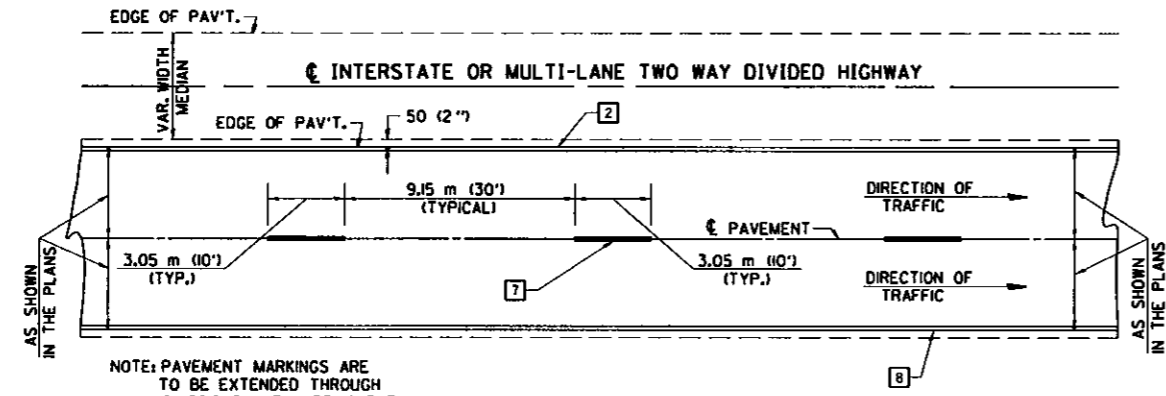
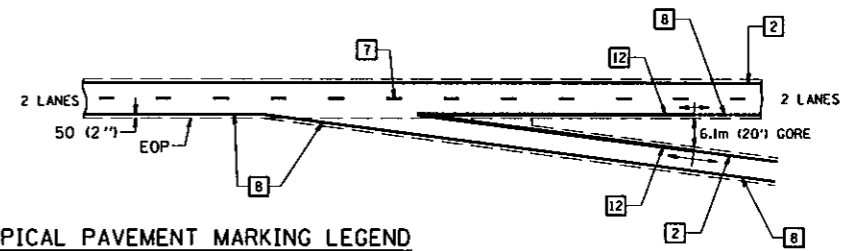
F.A.T. RITE	SECTION	COUNTY	TOTAL SHEETS	SHEET NO.
74	110-4.5MRS	VERMILION	13	13

TYPICAL APPLICATION OF PAVEMENT MARKINGS FOR INTERSTATE AND MULTI-LANE DIVIDED HIGHWAYS

TYPICAL ENTRANCE RAMP TERMINAL



TYPICAL EXIT RAMP TERMINAL



NOTE: PAVEMENT MARKINGS ARE TO BE EXTENDED THROUGH OMISSIONS WHEN APPLICABLE.

NOTE: SEE ARTICLES 780.04 & 780.03 FOR LOCATION OF STRIPES AND MARKERS RELATIVE TO EDGES OR JOINTS.

FOR RAISED REFLECTIVE PAVEMENT MARKERS, REFER TO STANDARD 78100L.

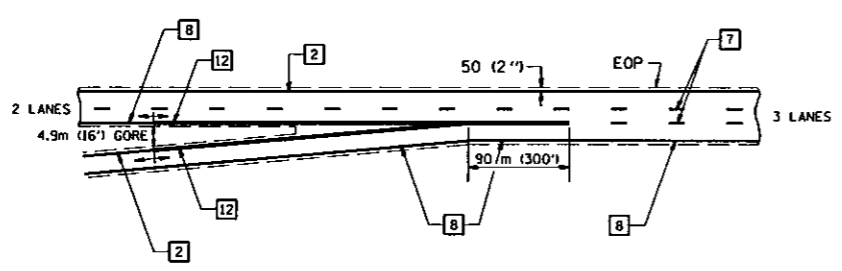
TYPICAL PAVEMENT MARKING LEGEND

- 1 100 (4) SKIP-DASH (YELLOW)
- 2 100 (4) SOLID (YELLOW)
- 3 300 (12) DIAGONAL (YELLOW)
- 4 100 (4) DOUBLE YELLOW (NARROW)
- 5 100 (4) DOUBLE YELLOW (WIDE)
- 6 RESERVED
- 7 100 (4) SKIP-DASH (WHITE)
- 8 100 (4) SOLID (WHITE)
- 9 300 (12) DIAGONAL (WHITE)
- 10 150 (6) CROSS WALK (WHITE)
- 11 600 (24) STOP BAR (WHITE)
- 12 200 (8) SOLID (WHITE)
- 13 100 (4) LANE LINE EXTENSIONS (WHITE)
- 14 RESERVED

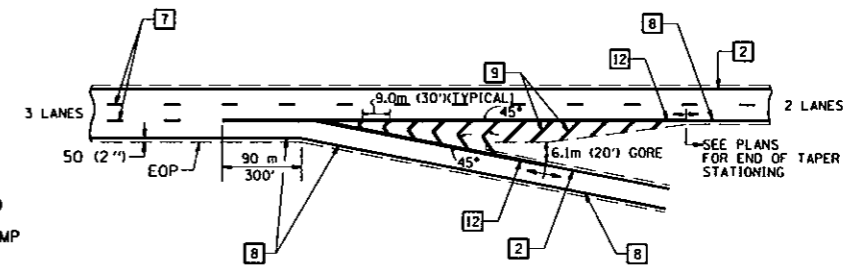
TYPICAL PAVEMENT MARKERS LEGEND

- ◆ TWO-WAY AMBER MARKER
- ▶ ONE-WAY AMBER MARKER
- ▷ ONE-WAY CRYSTAL MARKER

ENTRANCE RAMP TERMINAL with EXCLUSIVE LANE



EXIT RAMP TERMINAL with EXCLUSIVE (auxiliary) LANE



TYPICAL ENTRANCE AND EXIT RAMP TERMINALS ARE DETAILED SHOWING MARKINGS. WHEN ONLY MAINLINE PAVEMENT IS RESURFACED, WHEN RAMP ARE SURFACED, THE RAMP EDGE LINES SHALL BE AS SHOWN IN THE PLANS.

DESIGNED	P.E.E.	DATE	REVISIONS		REVISIONS	
		3/89	NAME	DATE	NAME	DATE
CHECKED	C.T.D.	4/89	D.L.M.	2-91	D.L.P.	8-97
CADD NO.	F-5.22		D.L.P.	3-96		

PLOT DATE: 10/18/2006
 FILE NAME: c:\pwworkspace\70559\70559.dwg
 PLOT SCALE: 1:1
 USER: bpc