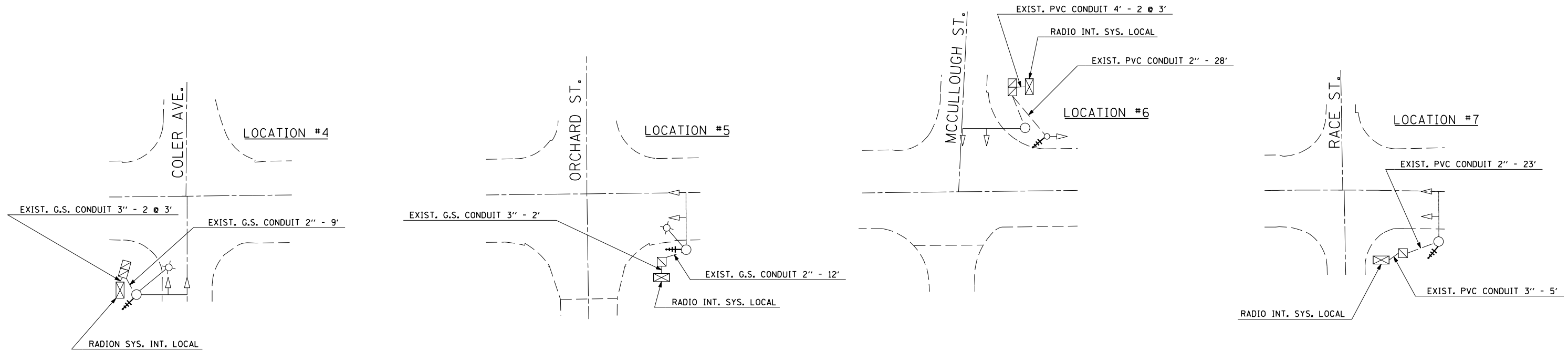


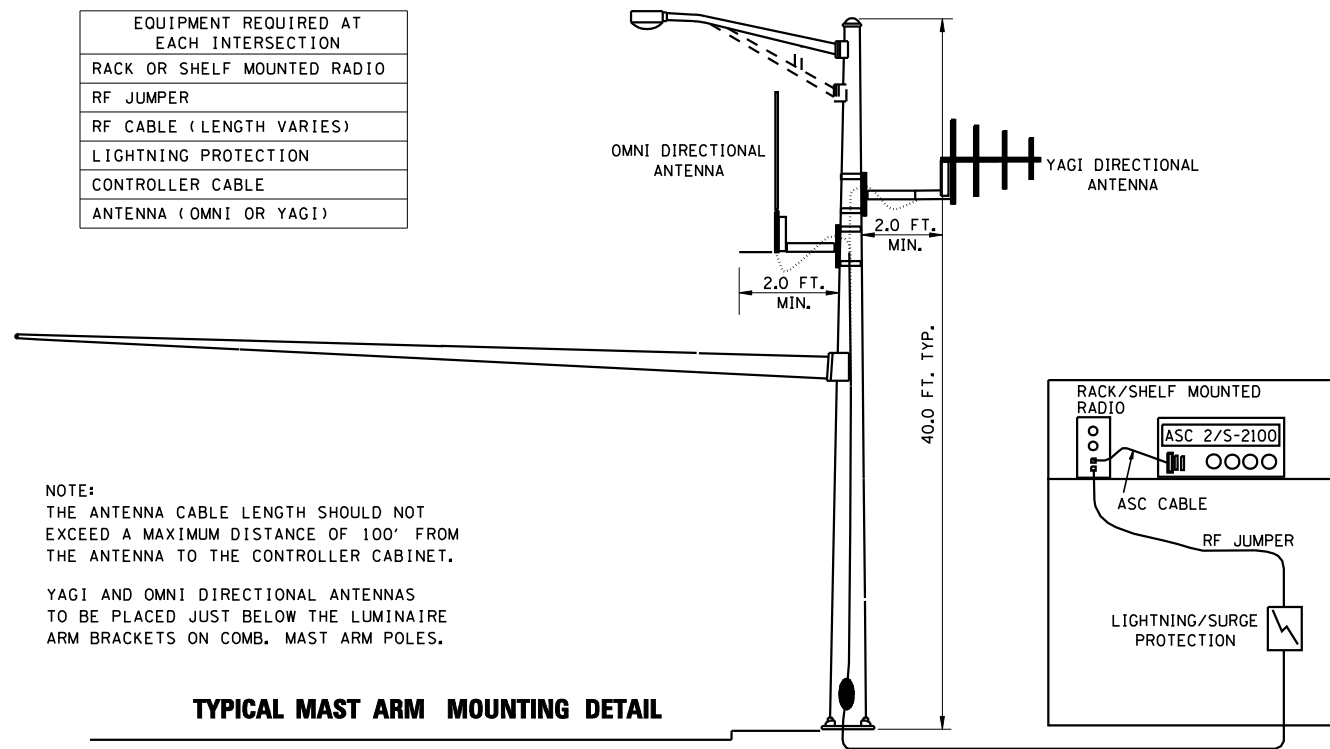
| F.A.P. RTE. | SECTION | COUNTY | TOTAL SHEETS | SHEET NO. |
|-------------|-----------|-----------|--------------|-----------|
| 808 | (28X)TS-3 | CHAMPAIGN | 14 | 14 |

PROPOSED RADIO INTERCONNECT SYSTEM LAYOUT



RADIO INTERCONNECT ANTENNA MOUNTING DETAILS

| EQUIPMENT REQUIRED AT EACH INTERSECTION |
|---|
| RACK OR SHELF MOUNTED RADIO |
| RF JUMPER |
| RF CABLE (LENGTH VARIES) |
| LIGHTNING PROTECTION |
| CONTROLLER CABLE |
| ANTENNA (OMNI OR YAGI) |



NOTE:
THE ANTENNA CABLE LENGTH SHOULD NOT EXCEED A MAXIMUM DISTANCE OF 100' FROM THE ANTENNA TO THE CONTROLLER CABINET.

YAGI AND OMNI DIRECTIONAL ANTENNAS TO BE PLACED JUST BELOW THE LUMINAIRE ARM BRACKETS ON COMB. MAST ARM POLES.

TYPICAL MAST ARM MOUNTING DETAIL

NOT TO SCALE

LEGEND

- ☒ EXISTING CONTROLLER AND CABINET
- ⊙ EXISTING SIGNAL HEAD AND POST
- ⊙ EXISTING MAST ARM ASSEMBLY, SIGNAL HEAD
- ☒ EXISTING HANDHOLE
- ⊙ EXISTING SERVICE INSTALLATION POLE
- EXISTING CONDUIT
- ⊕ PROPOSED RADIO INTERCONNECT ANTENNA - YAGI DIRECTIONAL
- ⊔ PROPOSED RADIO INTERCONNECT ANTENNA - OMNI DIRECTIONAL

NOTE:
RADIO ANTENNA TO BE MOUNTED ON MAST ARM STRAIN POLE (SEE ANTENNA DETAILS).