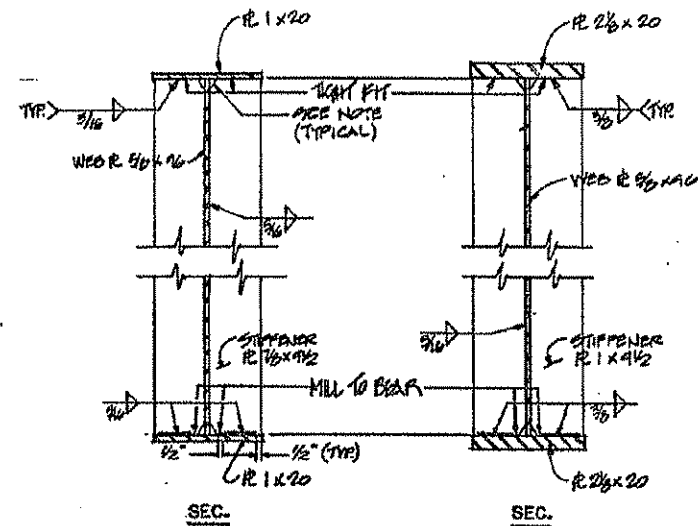


**FOR INFORMATION ONLY
NOT FOR CONSTRUCTION**

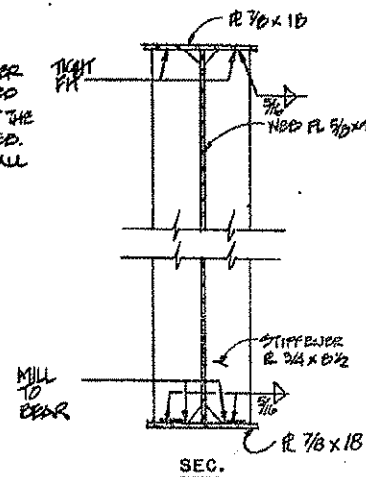
Sheet No. 21
of 55 Sheets

ROUTE NO.	SECTION	COUNTY	TOTAL SHEETS	SHEET NO.
FAI 74	114-VB BR	CHAMPAIGN	140	104
CONTRACT NO. 70622				

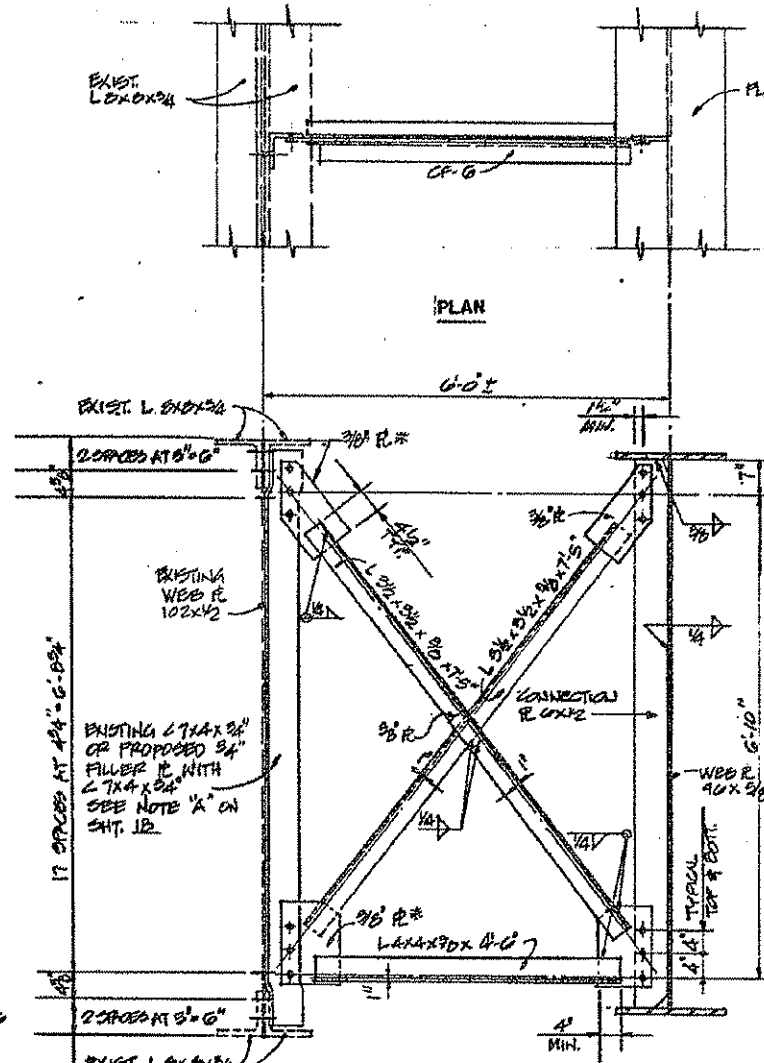


GIRDER STIFFENER DETAILS-UNIT 1
AT W. ABUT. OR W. BEARING PIER NO. 3
AT PIERS NO. 1 OR 2

NOTE: THE TOP AND BOTTOM OF STIFFENER PLATES AT BEARINGS SHALL BE CHIFFED 1" HORIZONTALLY AND 2 1/2" VERTICALLY AT THE JUNCTION OF THE FLANGES AND THE WEB. INTERMEDIATE STIFFENER PLATES SHALL BE CHIFFED IN A LIKE MANNER AT THE JUNCTION OF COMPRESSION FLANGES AND THE WEB.

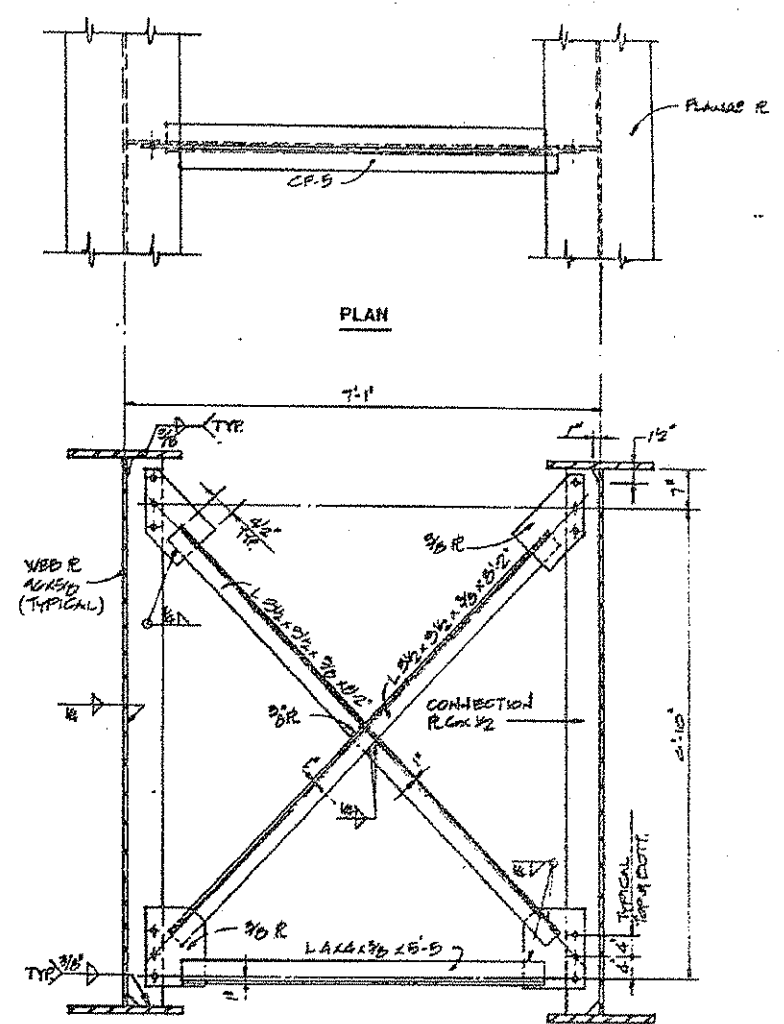


GIRDER STIFFENER DETAILS-UNIT 2



CROSS FRAME CF-6
FIELD DRILL 1" DIA. HOLES IN EXISTING FOR 7/8" DIA. ASSES HIGH STRENGTH BOLTS TO CONNECT PROPOSED L 7x4 AT LOCATIONS INDICATED ON SHT. 18
COST OF FIELD DRILLING HOLES SHALL BE INCIDENTAL TO STRUCTURAL STEEL.

* 1 1/2" x 1 1/4" SLOTTED HOLES IN GOSSET PLATES AT GIRDERS 8x AND 10x. ONE 5/16" THICK STRUCTURAL PLATE WASHER SHALL BE PROVIDED OVER ALL SLOTTED HOLES.



CROSS FRAME CF-5

NOTE: ALL BOLTS FOR CROSS FRAME CONNECTIONS SHALL BE 7/8" DIA. H.S. HOLES FOR BOLTS SHALL BE 15/16" DIA. EXCEPT AS NOTED.

HARDENED WASHERS SHALL BE REQUIRED OVER ALL HOLES, EXCEPT AS NOTED.

NOTE: WORK THIS SHEET WITH SHEET NO. 18, 19, 20, 22 AND 25

REVISIONS					STATE OF ILLINOIS DEPARTMENT OF TRANSPORTATION DIVISION OF HIGHWAYS		DATE JULY 2005
1							DESIGNED BY JLS
2							CHECKED BY JLS
3							PROJECT NO. 3400-5
4							DATE JULY 2005
5							BY HOMER L. CHASTAIN & ASSOCIATES CONSULTING ENGINEERS