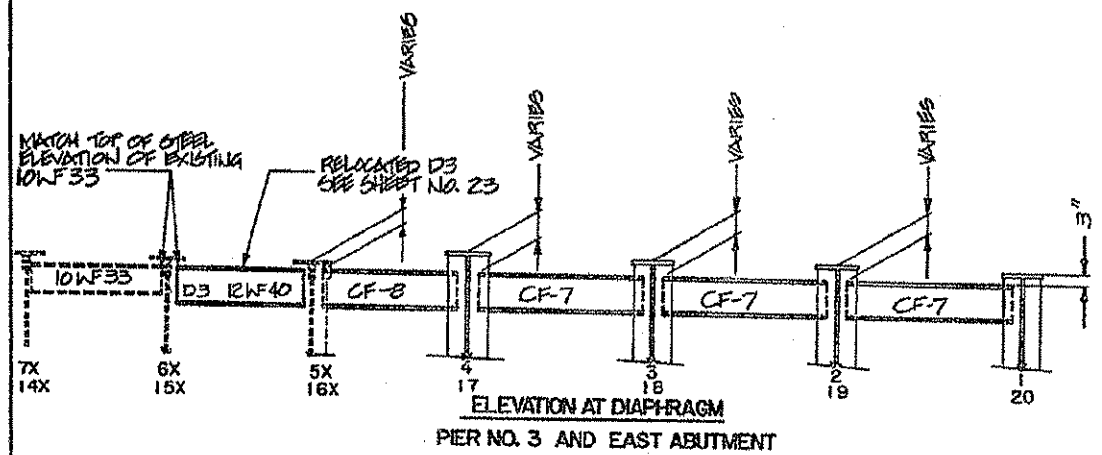
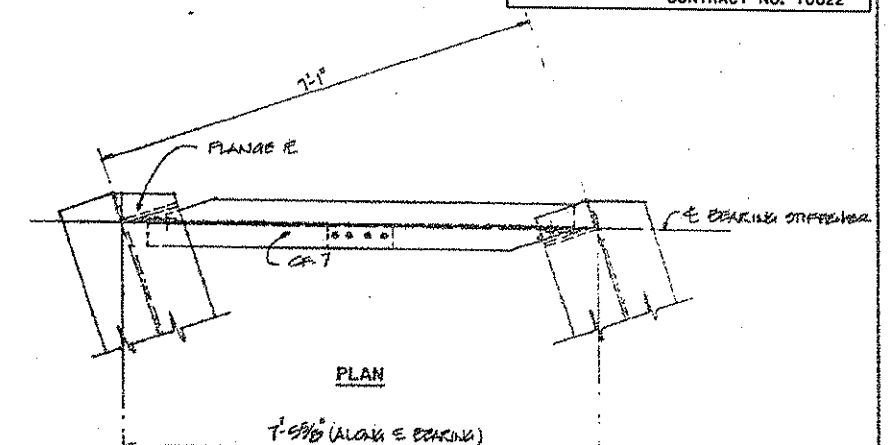
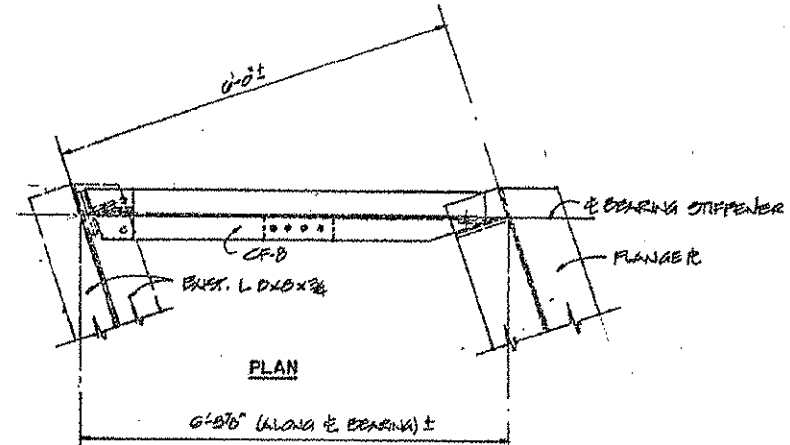
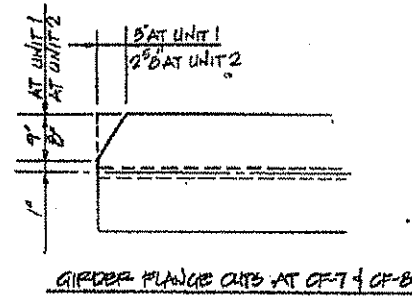


**FOR INFORMATION ONLY
NOT FOR CONSTRUCTION**

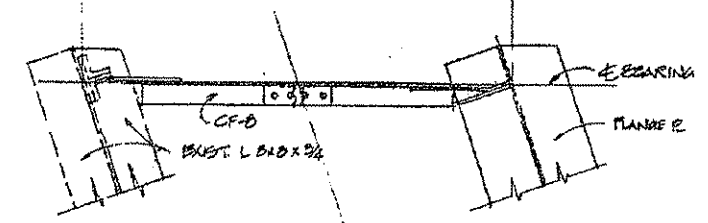
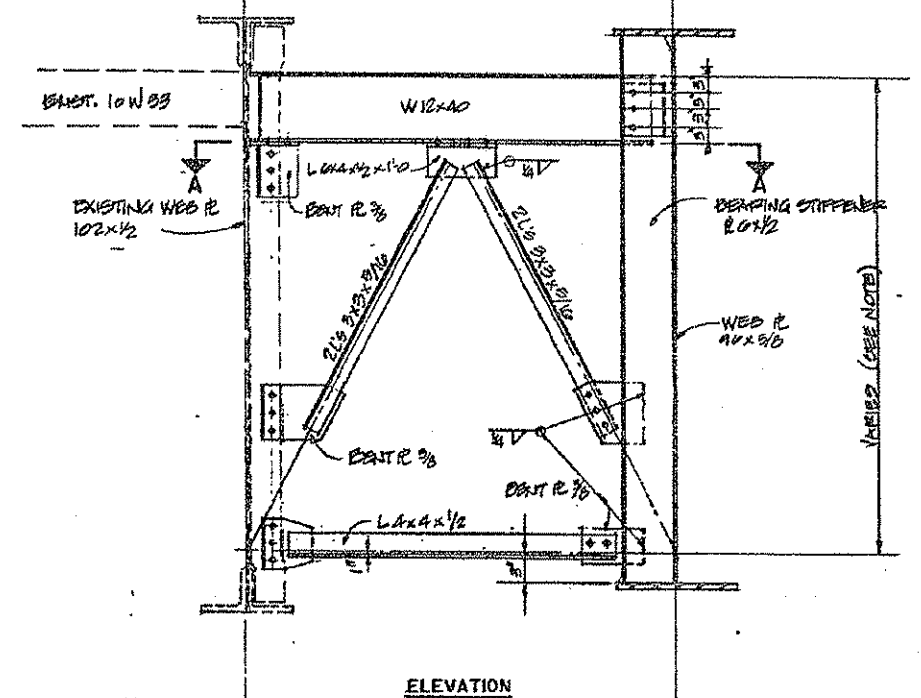
Sheet No. 22
of 39 Sheets

PROJECT NO.	SECTION	COUNTY	TOTAL SHEETS	SHEET NO.
FAL 74	(14-VB) BR	CHAMPAIGN	140	109
CONTRACT NO. 70622				

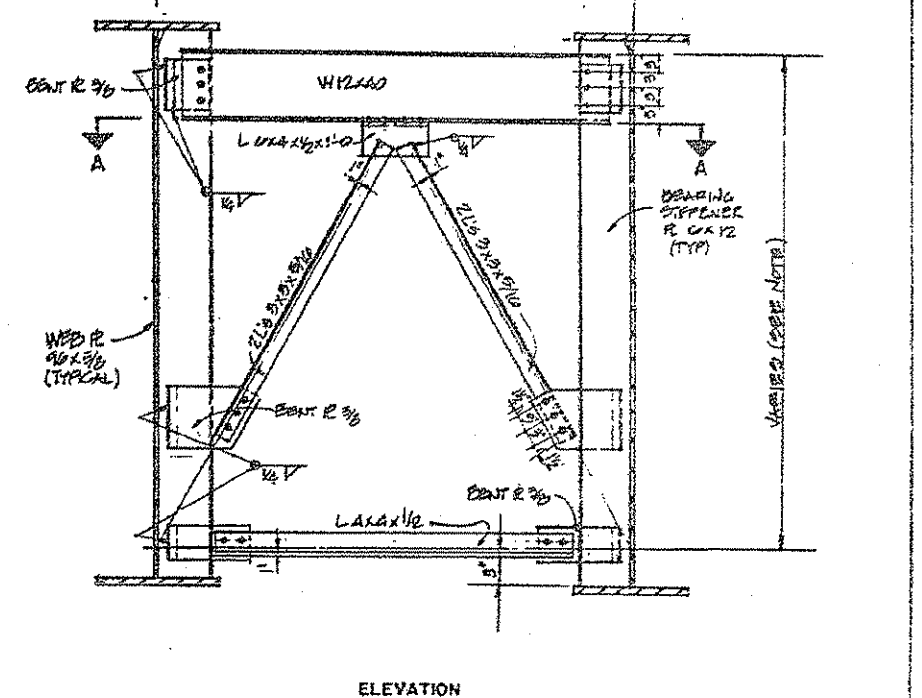
F.A.I. RITE.	SECTION	COUNTY	TOTAL SHEETS	SHEET NO.
74	(14-11)	CHAMPAIGN	22	13
CONTRACT NO. 70622				



NOTE:
 AT PIER NO. 3 AND EAST ABUTMENT - STRAIGHT LINE ELEVATIONS OF TOP OF STEEL OF NEW AND RELOCATED MEMBERS FROM TOP OF STEEL OF EXISTING ADJACENT 10WF33 AT GIRDERS 5X AND 16X TO 3" CLEARANCE AS SHOWN AT NEW EXTERIOR GIRDERS 1 AND 20.
 AT WEST ABUTMENT - SET ALL NEW W12X40 MEMBERS LEVEL AT THE SAME ELEVATION AS ADJACENT EXISTING 10WF33 AT GIRDERS 5X AND 16X.



CROSS FRAME CF-8
 NOTE: SEC. A-A FOR CROSS FRAME C-7 SIMILAR



CROSS FRAME CF-7

NOTE: WORK THIS SHEET WITH SHEET NO. 18, 19, 20, 21, AND 23

REVISIONS		STATE OF ILLINOIS DEPARTMENT OF TRANSPORTATION DIVISION OF HIGHWAYS		PROJECT NO.
1		F.A.I. 74	S.N. 010-0021	3400-5
2		STA. 1219+00.14	CHAMPAIGN COUNTY	
3		HOMER L. CHASTAIN & ASSOCIATES CONSULTING ENGINEERS		
4				
5				
6				
7				
8				
9				
10				