

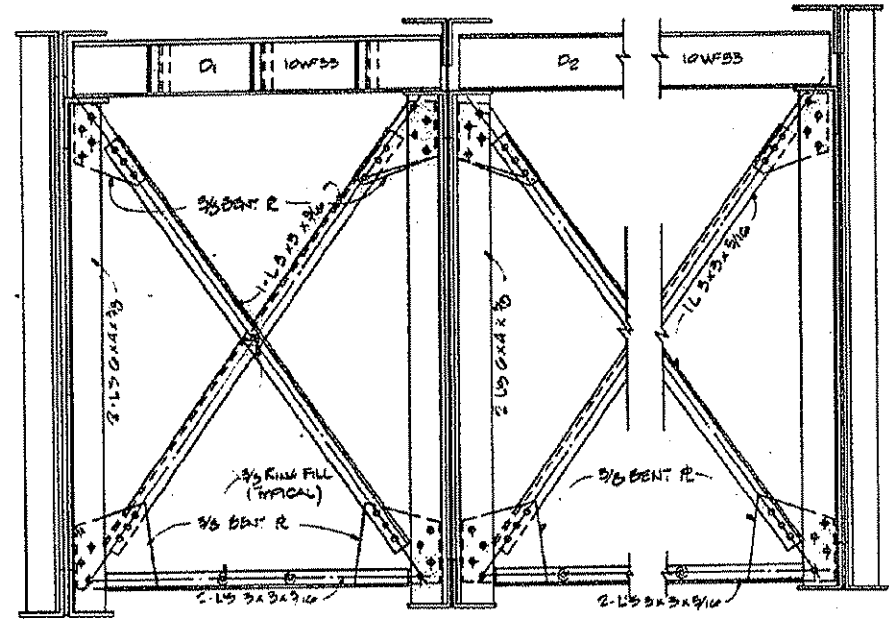
ROUTE NO.	SECTION	COUNTY	TOTAL SHEETS	SHEET NO.
F A I 74	14-VB	CHAMPAIGN	140	100
FED. ROAD DIST. NO.				

**FOR INFORMATION ONLY
NOT FOR CONSTRUCTION**

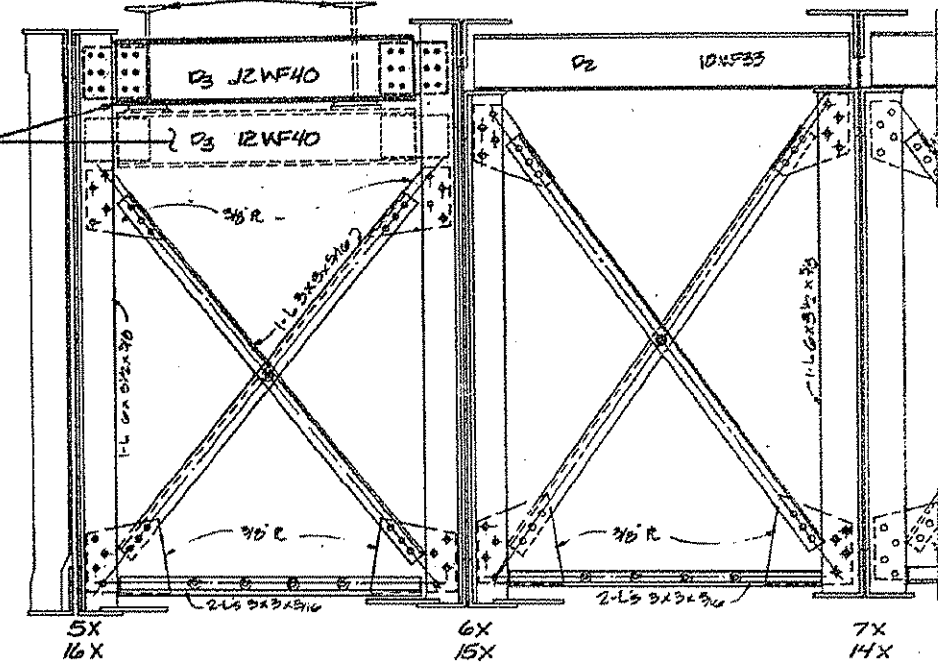
NOTE: SEE SHEET NO. 26 FOR FINISH PLATE EXPANSION DEVICE PEDESTAL HOLES.

REMOVE EXISTING 181 54.7 FULL LENGTH BOTH SIDES.

REMOVE AND RELOCATE EXISTING DIAPHRAGMS SEE ELEVATION AT DIAPHRAGM, SHEET NO. 22.



EXISTING CROSS FRAME CF-3
(AT ABUTMENTS)



EXISTING CROSS FRAME CF-4 **EXISTING CROSS FRAME CF-3**
(AT PIER 3 AND EAST ABUTMENT)

STRUCTURAL STEEL REPAIR:

STRUCTURAL STEEL TO BE REMOVED AND REPLACED WITH NEW SECTIONS:

1. ALL EXISTING DIAPHRAGMS (D-1 AND D-2) (10 WF 33) BETWEEN EXISTING GIRDERS.
2. LATERAL BRACE AND GUSSET PLATE, BETWEEN GIRDERS 8X AND 9X.
3. BOTTOM HORIZONTAL ANGLES PARALLEL WITH ABUTMENT BACKWALL, BETWEEN GIRDERS 8X AND 9X, AND 9X AND 10X. SEE SHEET 18.

REMOVE AND RELOCATE EXISTING DIAPHRAGMS AT PIER NO. 3 AND AT EAST ABUTMENT:
(D3X12 WF 40) BETWEEN GIRDERS 5X AND 6X, AND BETWEEN GIRDERS 15X AND 16X.

NOTE: THIS SHEET IS FOR REFERENCE FOR STRUCTURAL STEEL REPAIR, STRUCTURAL STEEL REMOVAL AND REMOVAL AND RELOCATION OF EXISTING DIAPHRAGMS.

NOTE: MARK THIS SHEET WITH SHEETS 18 THRU 22

EXISTING CROSS FRAMES			
REVISIONS		STATE OF ILLINOIS DEPARTMENT OF TRANSPORTATION DIVISION OF HIGHWAYS	
NO.	DATE	REVISION	DESIGNED BY
1			J.E. 3-51
2			
3			
4			
5			
6			
7			
8			
9			
10			
F.A.I. 74		S.N. 010-0021	SEC. 14-VB15
STA. 1219+00.14		CHAMPAIGN COUNTY	
HOWER L. CHASTAIN & ASSOCIATES CONSULTING ENGINEERS			3400-5