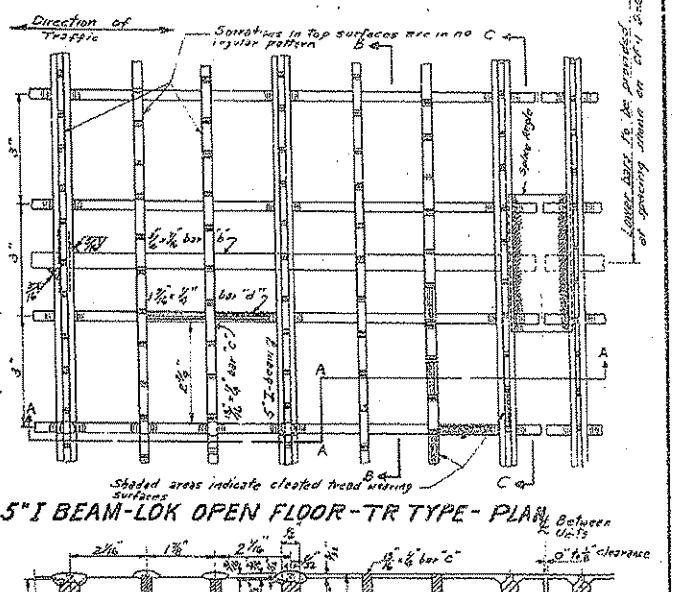
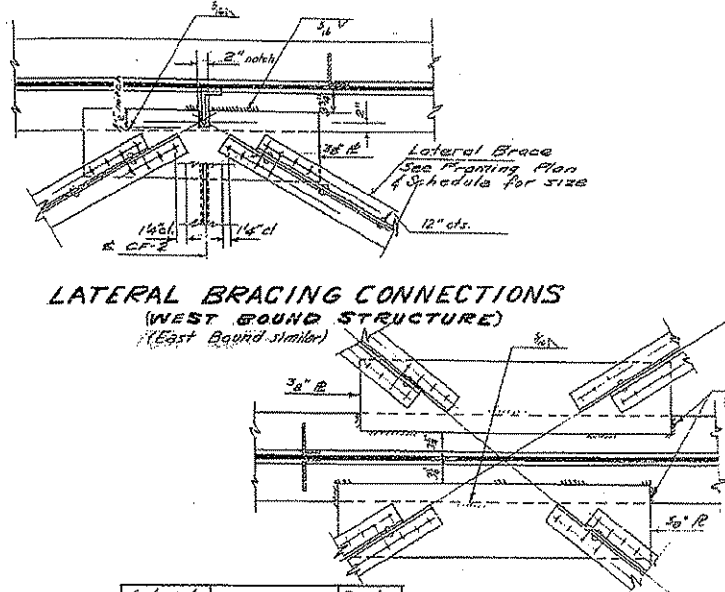
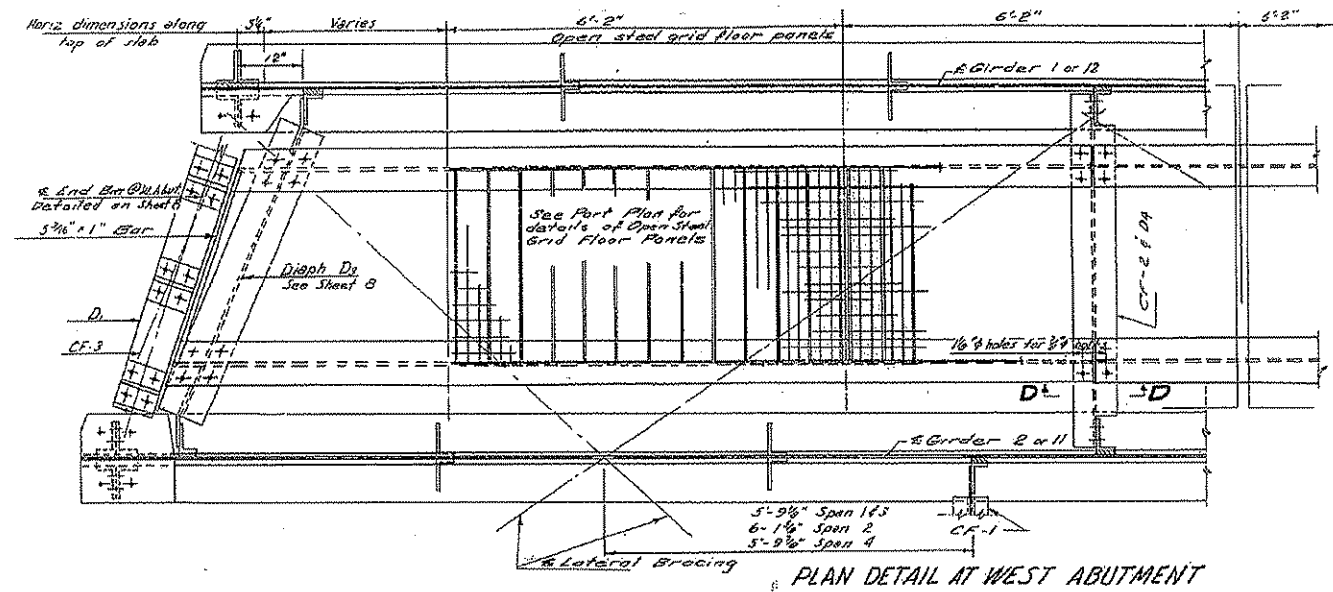


**FOR INFORMATION ONLY
NOT FOR CONSTRUCTION**

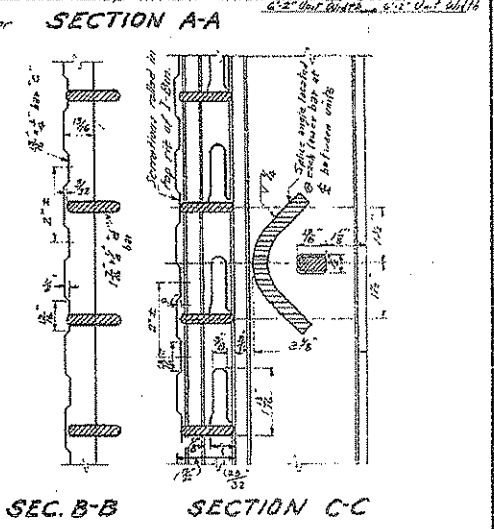
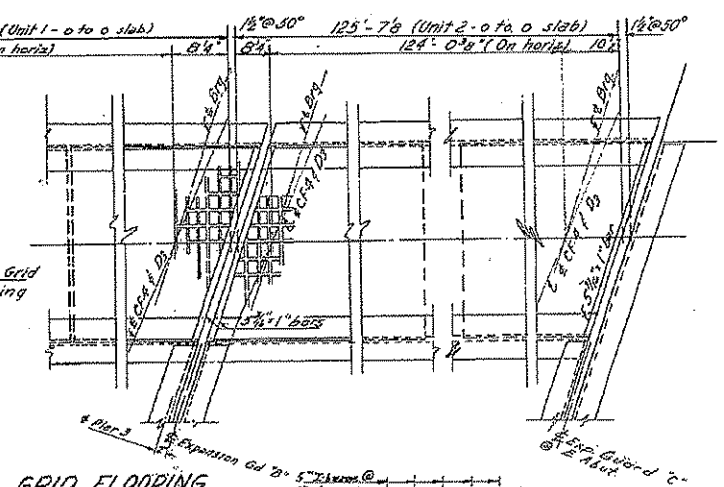
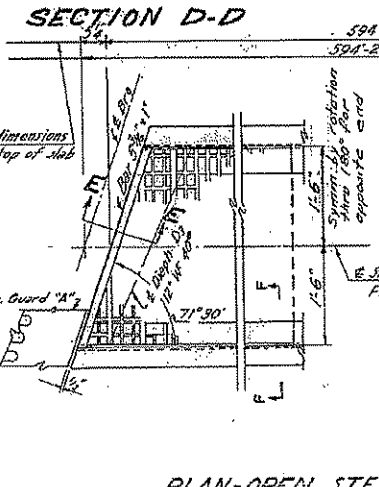
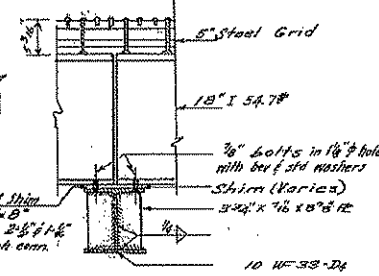
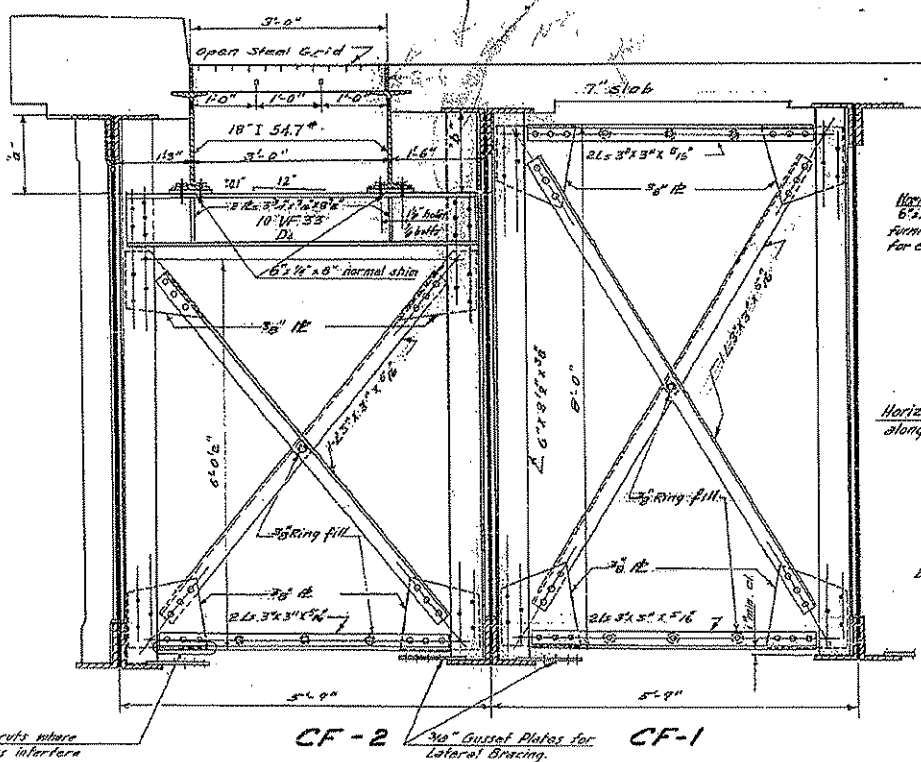
STATE OF ILLINOIS
DEPARTMENT OF PUBLIC WORKS & BUILDINGS
DIVISION OF HIGHWAYS

DATE NO.	SECTION	COUNTY	NO. OF SHEETS	SHEET NO.
14-39	14-VF	CHAMPAIGN	20	17
SHEET NO. 7 16 SHEETS				



Lateral Brace	Members	Rivets per L
A	2L 4 x 3 1/2 x 3/8	4
B	2L 3 1/2 x 3 1/2 x 3/8	3
C	2L 3 1/2 x 3 1/2 x 3/8	2

SCHEDULE FOR LATERAL BRACING MEMBERS
Positions shown on Framing Plan



STEEL GRID FLOORING
LATERAL BRACING

I.C. R.R. OVERHEAD
F.A. RT. 39 SEC. 14-VB-VF
CHAMPAIGN COUNTY
STA. 219+00.55

DESIGNED *J. V. N.*
CHECKED *M. G. Peter*
DRAWN *J. V. N.*
CHECKED *M. G. Peter*

EXAMINED *V. M. Romine*
PASSED *[Signature]*
APPROVED *[Signature]*

Sept. 23 1957

