

STATE OF ILLINOIS  
DEPARTMENT OF PUBLIC WORKS & BUILDINGS  
DIVISION OF HIGHWAYS

FOR INFORMATION ONLY  
NOT FOR CONSTRUCTION

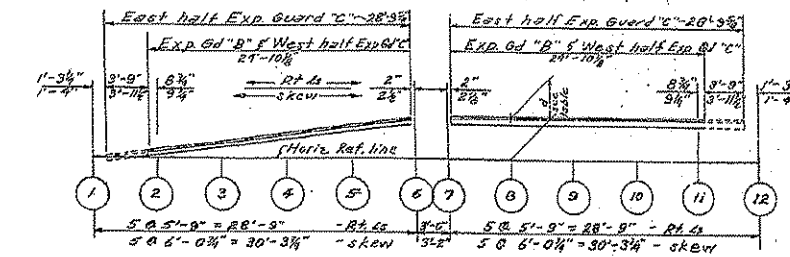
ROUTE NO.	SECTION	COUNTY	TOTAL SHEETS	SHEET NO.
74	14-VB 14-VF	CHAMPAIGN	20 12	12
SHEETS				

DIMENSIONS "a" & "b"

Girder	West Bound		East Bound	
	a	b	a	b
1	1'-3 3/4"	1'-3 3/4"	1'-3 3/4"	1'-3 3/4"
2	1'-2 1/4"	1'-2 1/4"	1'-2 1/4"	1'-2 1/4"
3	1'-2 1/4"	1'-2 1/4"	1'-2 1/4"	1'-2 1/4"
4	1'-2 1/4"	1'-2 1/4"	1'-2 1/4"	1'-2 1/4"
5	1'-2 1/4"	1'-2 1/4"	1'-2 1/4"	1'-2 1/4"
6	1'-2 1/4"	1'-2 1/4"	1'-2 1/4"	1'-2 1/4"
7	1'-2 1/4"	1'-2 1/4"	1'-2 1/4"	1'-2 1/4"
8	1'-2 1/4"	1'-2 1/4"	1'-2 1/4"	1'-2 1/4"
9	1'-2 1/4"	1'-2 1/4"	1'-2 1/4"	1'-2 1/4"
10	1'-2 1/4"	1'-2 1/4"	1'-2 1/4"	1'-2 1/4"
11	1'-2 1/4"	1'-2 1/4"	1'-2 1/4"	1'-2 1/4"
12	1'-2 1/4"	1'-2 1/4"	1'-2 1/4"	1'-2 1/4"
13	1'-2 1/4"	1'-2 1/4"	1'-2 1/4"	1'-2 1/4"
14	1'-2 1/4"	1'-2 1/4"	1'-2 1/4"	1'-2 1/4"
15	1'-2 1/4"	1'-2 1/4"	1'-2 1/4"	1'-2 1/4"
16	1'-2 1/4"	1'-2 1/4"	1'-2 1/4"	1'-2 1/4"
17	1'-2 1/4"	1'-2 1/4"	1'-2 1/4"	1'-2 1/4"
18	1'-2 1/4"	1'-2 1/4"	1'-2 1/4"	1'-2 1/4"
19	1'-2 1/4"	1'-2 1/4"	1'-2 1/4"	1'-2 1/4"
20	1'-2 1/4"	1'-2 1/4"	1'-2 1/4"	1'-2 1/4"
21	1'-2 1/4"	1'-2 1/4"	1'-2 1/4"	1'-2 1/4"
22	1'-2 1/4"	1'-2 1/4"	1'-2 1/4"	1'-2 1/4"
23	1'-2 1/4"	1'-2 1/4"	1'-2 1/4"	1'-2 1/4"
24	1'-2 1/4"	1'-2 1/4"	1'-2 1/4"	1'-2 1/4"
25	1'-2 1/4"	1'-2 1/4"	1'-2 1/4"	1'-2 1/4"
26	1'-2 1/4"	1'-2 1/4"	1'-2 1/4"	1'-2 1/4"
27	1'-2 1/4"	1'-2 1/4"	1'-2 1/4"	1'-2 1/4"
28	1'-2 1/4"	1'-2 1/4"	1'-2 1/4"	1'-2 1/4"
29	1'-2 1/4"	1'-2 1/4"	1'-2 1/4"	1'-2 1/4"
30	1'-2 1/4"	1'-2 1/4"	1'-2 1/4"	1'-2 1/4"
31	1'-2 1/4"	1'-2 1/4"	1'-2 1/4"	1'-2 1/4"
32	1'-2 1/4"	1'-2 1/4"	1'-2 1/4"	1'-2 1/4"
33	1'-2 1/4"	1'-2 1/4"	1'-2 1/4"	1'-2 1/4"
34	1'-2 1/4"	1'-2 1/4"	1'-2 1/4"	1'-2 1/4"
35	1'-2 1/4"	1'-2 1/4"	1'-2 1/4"	1'-2 1/4"
36	1'-2 1/4"	1'-2 1/4"	1'-2 1/4"	1'-2 1/4"
37	1'-2 1/4"	1'-2 1/4"	1'-2 1/4"	1'-2 1/4"
38	1'-2 1/4"	1'-2 1/4"	1'-2 1/4"	1'-2 1/4"
39	1'-2 1/4"	1'-2 1/4"	1'-2 1/4"	1'-2 1/4"
40	1'-2 1/4"	1'-2 1/4"	1'-2 1/4"	1'-2 1/4"
41	1'-2 1/4"	1'-2 1/4"	1'-2 1/4"	1'-2 1/4"
42	1'-2 1/4"	1'-2 1/4"	1'-2 1/4"	1'-2 1/4"
43	1'-2 1/4"	1'-2 1/4"	1'-2 1/4"	1'-2 1/4"
44	1'-2 1/4"	1'-2 1/4"	1'-2 1/4"	1'-2 1/4"
45	1'-2 1/4"	1'-2 1/4"	1'-2 1/4"	1'-2 1/4"
46	1'-2 1/4"	1'-2 1/4"	1'-2 1/4"	1'-2 1/4"
47	1'-2 1/4"	1'-2 1/4"	1'-2 1/4"	1'-2 1/4"
48	1'-2 1/4"	1'-2 1/4"	1'-2 1/4"	1'-2 1/4"

DIMENSIONS "c"

Girder	West Abut.	W-Dr. Pier 3	E-Dr. Pier 3	East Abut.
1	1'-0 3/4"	—	—	—
2	1'-1 1/4"	1'-0 3/4"	1'-0 3/4"	1'-0 3/4"
3	1'-2 1/4"	1'-1 1/4"	1'-1 1/4"	1'-0 3/4"
4	1'-2 1/4"	1'-1 1/4"	1'-1 1/4"	1'-1"
5	1'-3 1/4"	1'-1 1/4"	1'-1 1/4"	1'-1 1/4"
6	1'-4 1/4"	1'-1 1/4"	1'-1 1/4"	1'-1 3/4"
7	1'-5 1/4"	1'-1 1/4"	1'-1 1/4"	1'-1"
8	1'-2 1/4"	1'-1 1/4"	1'-1 1/4"	1'-1 1/4"
9	1'-2 1/4"	1'-1 1/4"	1'-1 1/4"	1'-1 1/4"
10	1'-2 1/4"	1'-1 1/4"	1'-1 1/4"	1'-1 1/4"
11	1'-1 1/4"	1'-1 1/4"	1'-1 1/4"	1'-1 1/4"
12	1'-0 3/4"	—	—	—

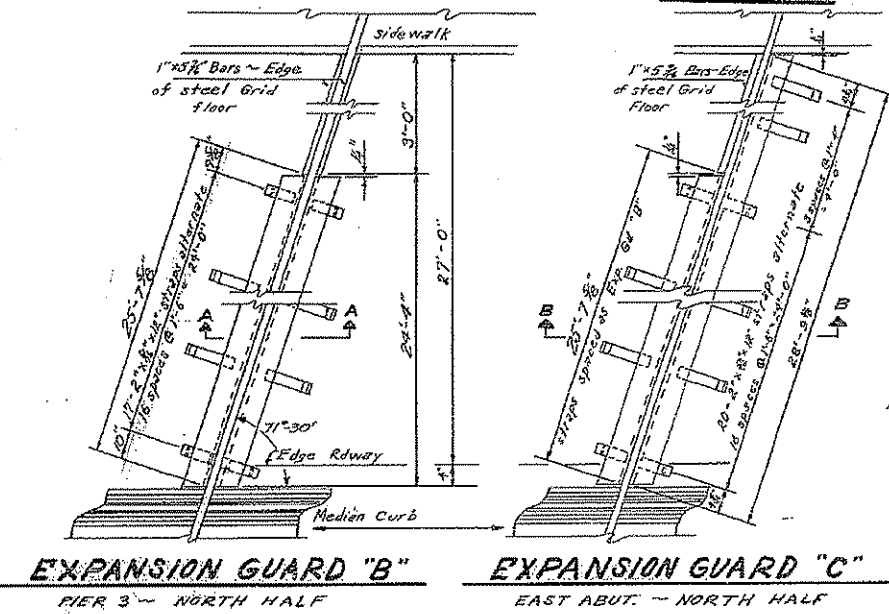
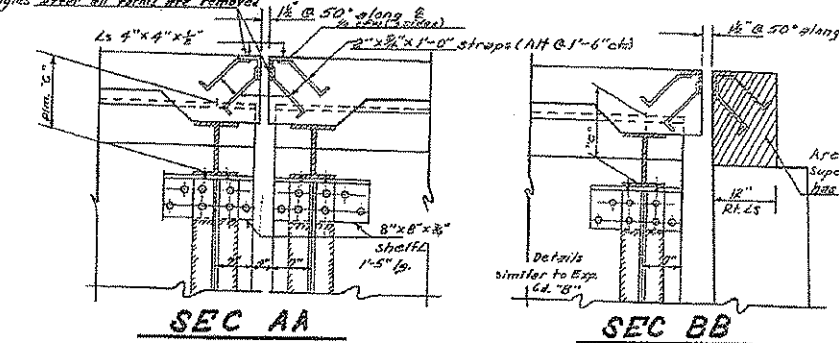


EXPANSION GUARD "B" & "C" PROFILE

DIMENSIONS "d"

Order	1	2	3	4	5	6	7	8	9	10	11	12
"B"	0"	1"	2"	2 1/2"	3 1/2"	4 1/2"	5 1/2"	4 1/2"	4 1/2"	4 1/2"	4 1/2"	4 1/2"
"C"	0"	1 1/2"	2 1/2"	3 1/2"	4 1/2"	5 1/2"	5 1/2"	5 1/2"	5 1/2"	5 1/2"	5 1/2"	5 1/2"

3/4" holes @ 12" cts for 3/8" bolts. All bolts shall be turned, sawed or clipped off flush with deck angles after all faces are removed.



Note:  
The Roadway Expansion Guards "B" & "C" shall be fabricated to fit Roadway.  
Est. wt. included in bill of material on sheet 9 is 3020 lbs.

DESIGNED: J. A. Nelson  
CHECKED: M. G. Peters  
DRAWN: J. B. K.  
CHECKED: M. G. Peters

EXAMINED: J. W. Rose  
PASSED: [Signature]  
APPROVED: [Signature]

Sept. 23, 1953



EXPANSION GUARDS "B" & "C"  
DIMENSIONS "a", "b" & "c"

I.C.R.R. OVERHEAD  
FA. RT. 39 SEC. 14-VB-VF  
CHAMPAIGN COUNTY  
STA. 219+00.55