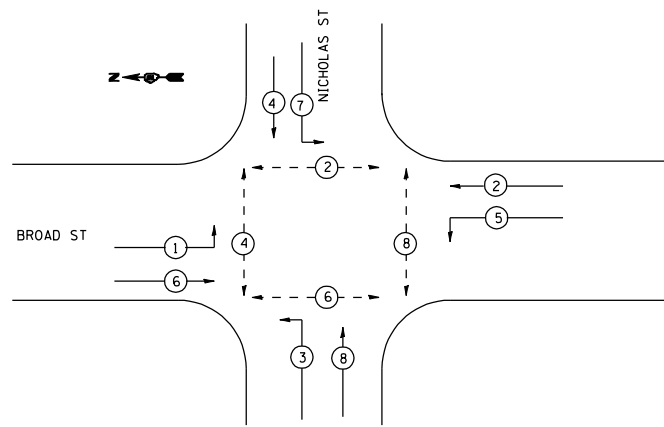
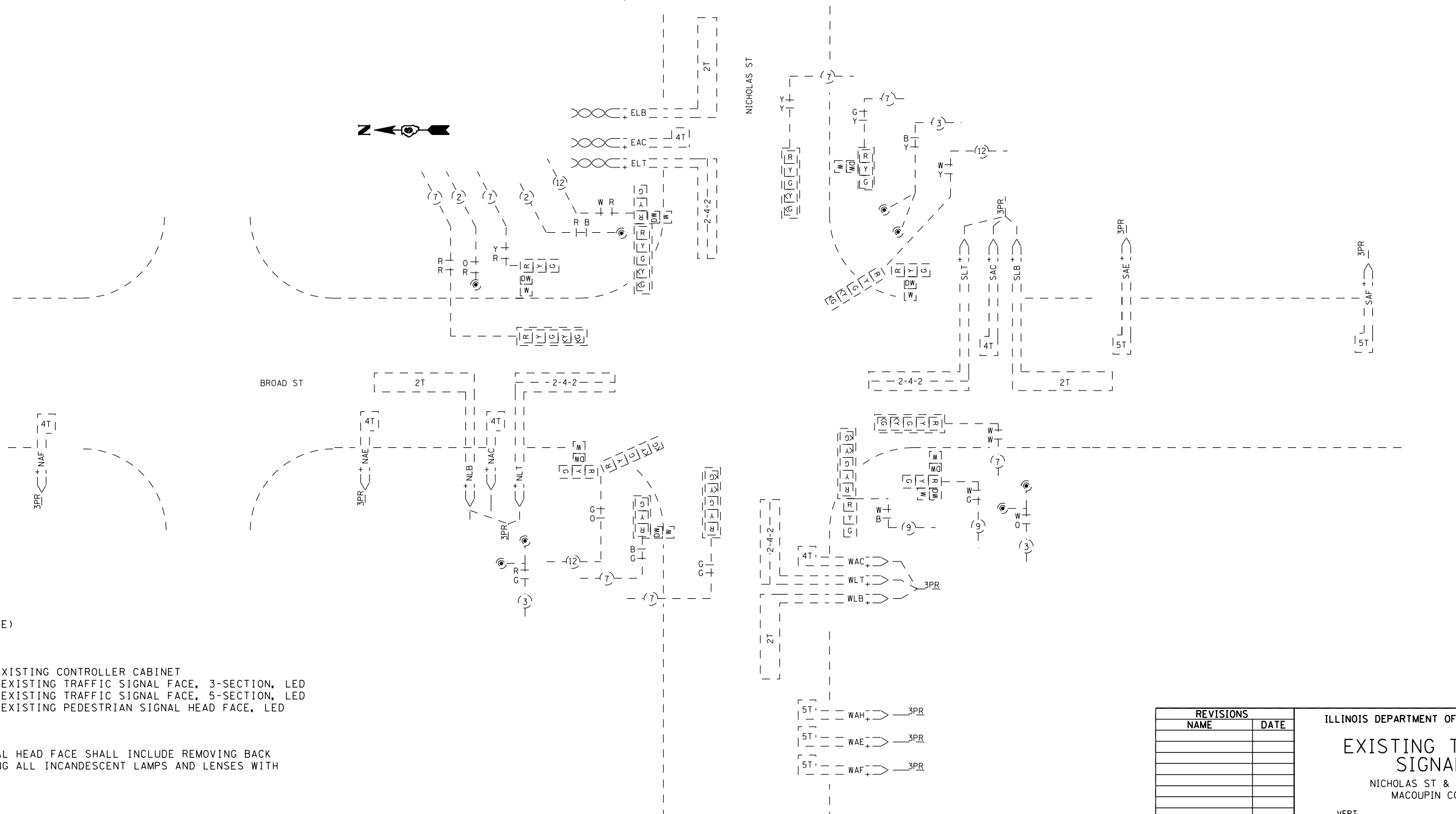
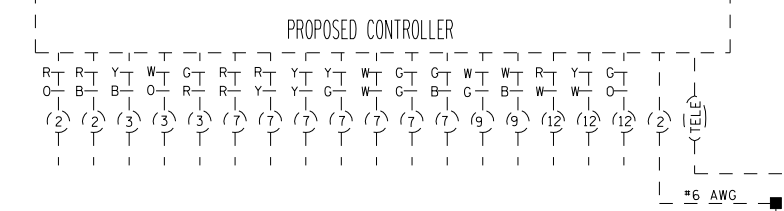
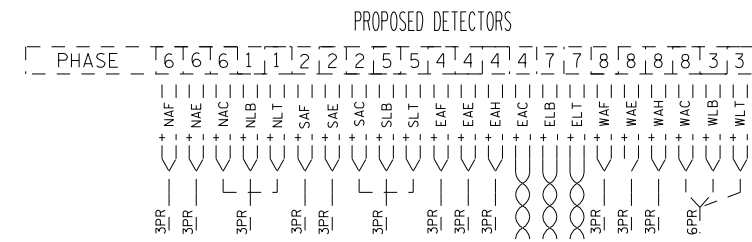
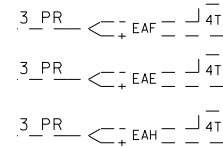


F.A. RTE.	SECTION	COUNTY	TOTAL SHEETS	SHEET NO.
•	••	VARIOUS	30	13
STA.		TO STA.		
FED. ROAD DIST. NO.		ILLINOIS	FED. AID PROJECT	
• VARIOUS				
•• D-6 TRAFFIC SIGNAL MOD 2004-2				



PHASE DESIGNATION DIAGRAM



TRAFFIC SIGNAL QUANTITIES

NICHOLAS & BROAD (CARLINVILLE)

QUANTITY	UNIT	ITEM
1	EACH	MODIFY EXISTING CONTROLLER CABINET
8	EACH	REBUILD EXISTING TRAFFIC SIGNAL FACE, 3-SECTION, LED
8	EACH	REBUILD EXISTING TRAFFIC SIGNAL FACE, 5-SECTION, LED
8	EACH	REBUILD EXISTING PEDESTRIAN SIGNAL HEAD FACE, LED

NOTES:

- REBUILD EXISTING SIGNAL HEAD FACE SHALL INCLUDE REMOVING BACK REFLECTOR AND REPLACING ALL INCANDESCENT LAMPS AND LENSES WITH LED INDICATORS.

REVISIONS	
NAME	DATE

ILLINOIS DEPARTMENT OF TRANSPORTATION
EXISTING TRAFFIC SIGNALS
 NICHOLAS ST & BROAD ST
 MACOUPIN COUNTY

SCALE: VERT. HORIZ. DATE: MAY '06 DRAWN BY: KDA CHECKED BY:

PLOT DATE = 10/25/2006
 FILE NAME = c:\projects\652804\ts_sheets.m32
 PLOT SCALE = 42,352% / IN.
 USER NAME = laughlinr1