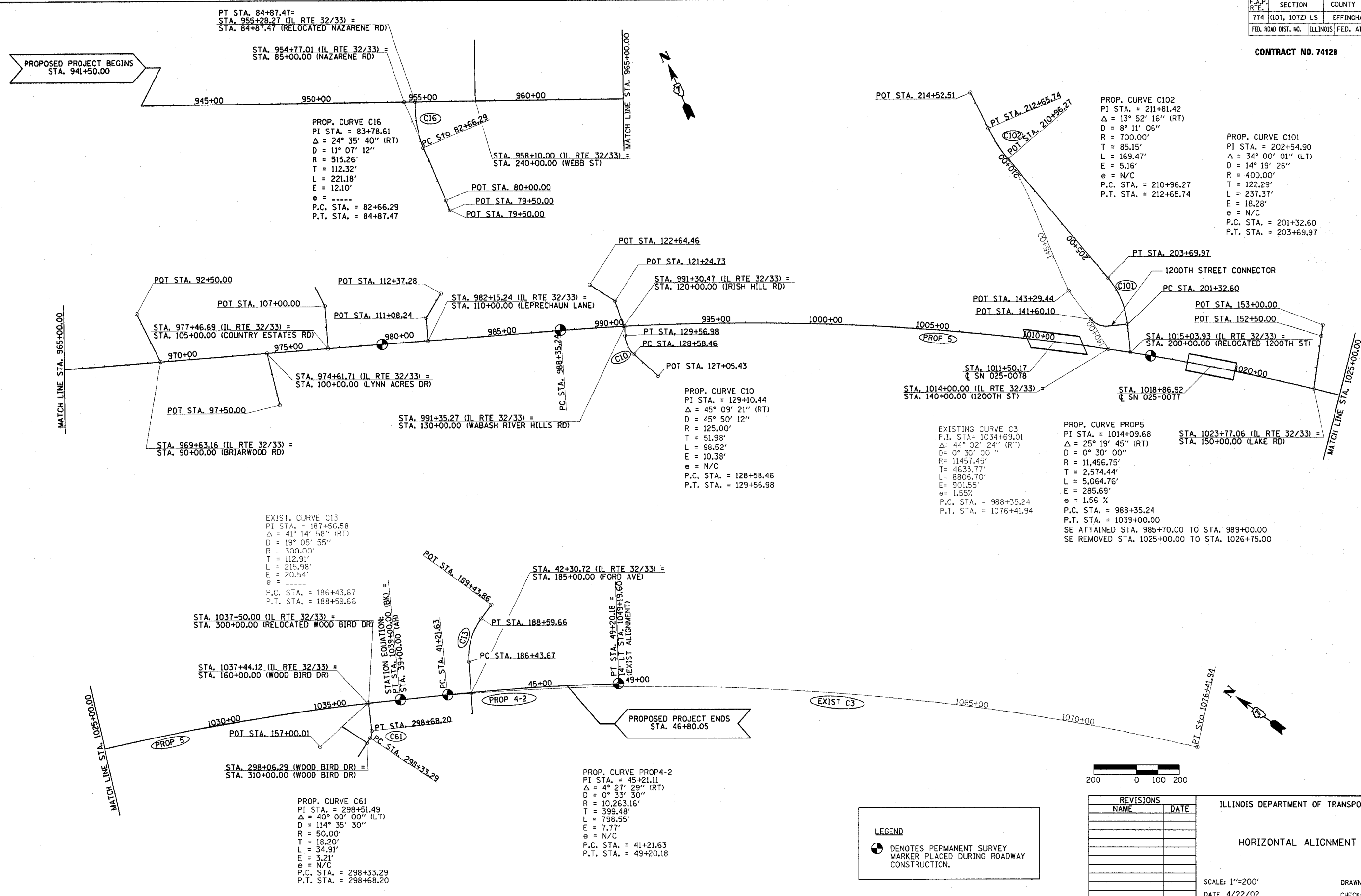


F.A.P. RTE.	SECTION	COUNTY	TOTAL SHEETS	SHEET NO.
774	(107, 107Z) LS	EFFINGHAM	22	5
FED. ROAD DIST. NO.		ILLINOIS	FED. AID PROJECT	

CONTRACT NO. 74128



PT STA. 84+87.47 =
 STA. 955+28.27 (IL RTE 32/33) =
 STA. 84+87.47 (RELOCATED NAZARENE RD)

STA. 954+77.01 (IL RTE 32/33) =
 STA. 85+00.00 (NAZARENE RD)

PROP. CURVE C16
 PI STA. = 83+78.61
 $\Delta = 24^\circ 35' 40''$ (RT)
 $D = 11^\circ 07' 12''$
 $R = 515.26'$
 $T = 112.32'$
 $L = 221.18'$
 $E = 12.10'$
 $e =$ -----
 P.C. STA. = 82+66.29
 P.T. STA. = 84+87.47

PROP. CURVE C102
 PI STA. = 211+81.42
 $\Delta = 13^\circ 52' 16''$ (RT)
 $D = 8^\circ 11' 06''$
 $R = 700.00'$
 $T = 85.15'$
 $L = 169.47'$
 $E = 5.16'$
 $e =$ N/C
 P.C. STA. = 210+96.27
 P.T. STA. = 212+65.74

PROP. CURVE C101
 PI STA. = 202+54.90
 $\Delta = 34^\circ 00' 01''$ (LT)
 $D = 14^\circ 19' 26''$
 $R = 400.00'$
 $T = 122.29'$
 $L = 237.37'$
 $E = 18.28'$
 $e =$ N/C
 P.C. STA. = 201+32.60
 P.T. STA. = 203+69.97

PROP. CURVE C10
 PI STA. = 129+10.44
 $\Delta = 45^\circ 09' 21''$ (RT)
 $D = 45^\circ 50' 12''$
 $R = 125.00'$
 $T = 51.98'$
 $L = 98.52'$
 $E = 10.38'$
 $e =$ N/C
 P.C. STA. = 128+58.46
 P.T. STA. = 129+56.98

EXISTING CURVE C3
 P.I. STA. = 1034+69.01
 $\Delta = 44^\circ 02' 24''$ (RT)
 $D = 0^\circ 30' 00''$
 $R = 11457.45'$
 $T = 4633.77'$
 $L = 8806.70'$
 $E = 901.55'$
 $e = 1.55\%$
 P.C. STA. = 988+35.24
 P.T. STA. = 1076+41.94

PROP. CURVE PROPS
 PI STA. = 1014+09.68
 $\Delta = 25^\circ 19' 45''$ (RT)
 $D = 0^\circ 30' 00''$
 $R = 11,456.75'$
 $T = 2,574.44'$
 $L = 5,064.76'$
 $E = 285.69'$
 $e = 1.56\%$
 P.C. STA. = 988+35.24
 P.T. STA. = 1039+00.00

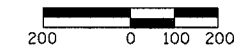
STA. 1023+77.06 (IL RTE 32/33) =
 STA. 150+00.00 (LAKE RD)

SE ATTAINED STA. 985+70.00 TO STA. 989+00.00
 SE REMOVED STA. 1025+00.00 TO STA. 1026+75.00

EXIST. CURVE C13
 PI STA. = 187+56.58
 $\Delta = 41^\circ 14' 58''$ (RT)
 $D = 19^\circ 05' 55''$
 $R = 300.00'$
 $T = 112.91'$
 $L = 215.98'$
 $E = 20.54'$
 $e =$ -----
 P.C. STA. = 186+43.67
 P.T. STA. = 188+59.66

PROP. CURVE PROP4-2
 PI STA. = 45+21.11
 $\Delta = 4^\circ 27' 29''$ (RT)
 $D = 0^\circ 33' 30''$
 $R = 10,263.16'$
 $T = 399.48'$
 $L = 798.55'$
 $E = 7.77'$
 $e =$ N/C
 P.C. STA. = 41+21.63
 P.T. STA. = 49+20.18

PROP. CURVE C61
 PI STA. = 298+51.49
 $\Delta = 40^\circ 00' 00''$ (LT)
 $D = 114^\circ 35' 30''$
 $R = 50.00'$
 $T = 18.20'$
 $L = 34.91'$
 $E = 3.21'$
 $e =$ N/C
 P.C. STA. = 298+33.29
 P.T. STA. = 298+68.20



LEGEND

● DENOTES PERMANENT SURVEY MARKER PLACED DURING ROADWAY CONSTRUCTION.

REVISIONS	
NAME	DATE

ILLINOIS DEPARTMENT OF TRANSPORTATION

HORIZONTAL ALIGNMENT PLAN

SCALE: 1"=200'

DATE 4/22/02

DRAWN BY MLO
 CHECKED BY BKB