

F.A.P. RTE.	SECTION	COUNTY	TOTAL SHEETS	SHEET NO.
758	3BR-1	MOULTRIE	24	1
FED. ROAD DIST. NO.	ILLINOIS	FED. AID PROJECT		

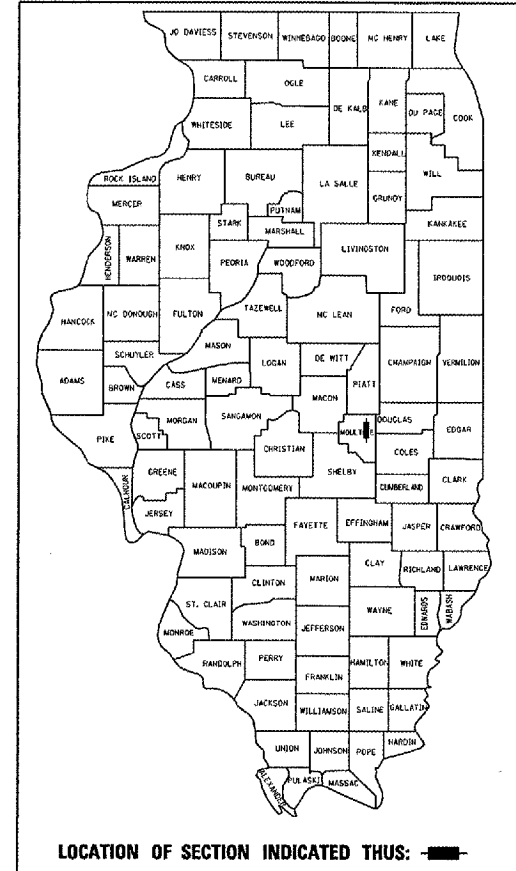
STATE OF ILLINOIS
DEPARTMENT OF TRANSPORTATION
DIVISION OF HIGHWAYS
**PLANS FOR PROPOSED
FEDERAL AID HIGHWAY**

FOR INDEX OF SHEETS, SEE SHEET NO. 2
FOR SUMMARY OF QUANTITIES, SEE SHEET NO. 3

F.A.P. ROUTE 758 (IL ROUTE 32)
SECTION 3BR-1
MOULTRIE COUNTY
PROJECT NO. BHF-0758(009)
C-97-040-06

BRIDGE BEAM REPLACEMENT & BRIDGE NEW DECK
OVER JONATHAN BRANCH 1.3 MILES SOUTH OF LOVINGTON

D-95-052-03



STATE OF ILLINOIS
DEPARTMENT OF TRANSPORTATION
DIVISION OF HIGHWAYS

SUBMITTED 027 17 20 06

[Signature]
DEPUTY DIRECTOR OF HIGHWAYS, REGION THREE ENGINEER

December 8, 20 06

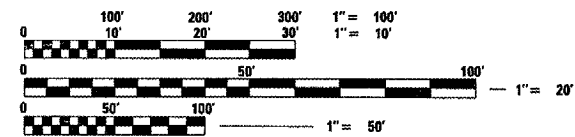
[Signature]
ENGINEER OF DESIGN AND ENVIRONMENT

December 8, 20 06

[Signature]
DIRECTOR, DIVISION OF HIGHWAYS

PHONE: 217-465-4181

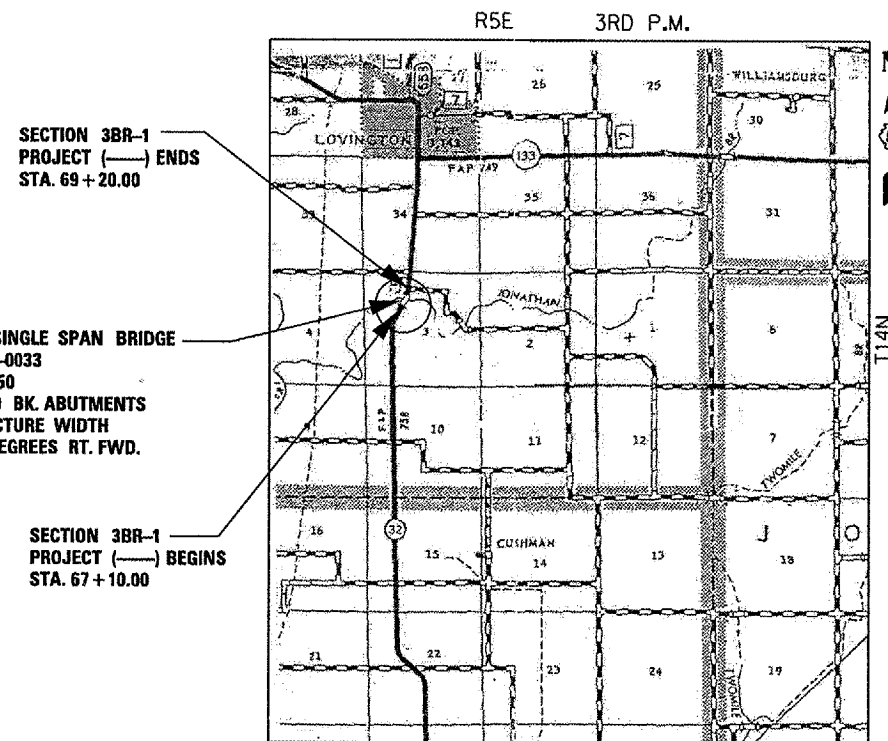
PROJECT ENGINEER: KENSIL GARNETT
CONSULTANT LIAISON: NANCY FASIG



SCALES
PLAN 1" = 20'
PROFILE HORIZ. 1" = 20'
PROFILE VERT. 1" = 5'
CROSS SECTIONS 1" = 5'
1" = 2 1/2'

FULL SIZE PLANS HAVE BEEN PREPARED USING STANDARD ENGINEERING SCALES, REDUCED SIZED PLANS WILL NOT CONFORM TO STANDARD SCALES, IN MAKING MEASUREMENTS ON REDUCED PLANS, THE ABOVE SCALES MAY BE USED.

FOR UNDERGROUND UTILITY LOCATIONS CALL J.U.L.I.E. TOLL FREE 1-800-892-0123



LOCATION MAP

GROSS AND NET LENGTH OF PROJECT = 210 FEET = 0.040 MILES ADT = 2100 (2004)

CONTRACT NO. 74147



[Signature]
CHARLES W. GUTHRIE, JR., PE
DATE October 9 20 06
EXPIRES NOVEMBER 30, 2007

BLANK, WESSELINK, COOK & ASSOCIATES
ENGINEERS - CONSULTANTS
DECATUR, ILLINOIS

F.A.P. RTE.	SECTION	COUNTY	TOTAL SHEETS	SHEET NO.
758	3BR-1	MOULTRIE	24	2
STA.		TO STA.		
FED. ROAD DIST. NO.		ILLINOIS FED. AID PROJECT		

GENERAL NOTES

G.N.-100
ENGLISH UNITS OF MEASUREMENT SHALL GOVERN OVER AND SUPERSEDE ANY METRIC UNITS SHOWN IN THIS CONTRACT. WHERE INCLUDED, METRIC UNITS ARE FOR INFORMATION ONLY.

G.N. 105.09A
ALL ELEVATIONS SHOWN IN THE PLANS ARE BASED ON NORTH AMERICAN VERTICAL DATUM OF 1988 (NAVD 88).

G.N. 107.31
UTILITY LINES WERE PLOTTED FROM INFORMATION FURNISHED BY THE VARIOUS UTILITY COMPANIES INVOLVED AND THEIR ACCURACY SHOULD BE CONSIDERED APPROXIMATE ONLY. THESE UTILITY COMPANIES MAY BE ADJUSTING THEIR FACILITIES DURING CONSTRUCTION. THE CONTRACTOR SHALL COOPERATE WITH THESE ORGANIZATIONS WHILE THESE ADJUSTMENTS ARE BEING PERFORMED. I.U.L.E. - JOINT UTILITY LOCATION INFORMATION FOR EXCAVATORS SYSTEM (800) 892-0123.

G.N. 250C (SPECIAL)
TEMPORARY EROSION CONTROL SEEDING AND MULCH, METHOD 2 IS INCLUDED IN THIS CONTRACT TO SEED NEW EARTH SHOULDERS AND FORE SLOPES DURING TIME PERIODS WHEN PERMANENT SEEDING IS NOT ALLOWED. SOME OR ALL OF THE TEMPORARY EROSION CONTROL SEEDING AND MULCH WILL BE DELETED IF IT IS POSSIBLE TO PLACE PERMANENT SEEDING ON EARTH SHOULDERS AT THE TIME OF THEIR COMPLETION.

G.N. 281
THE RIPRAP GRADATION SHALL BE IN ACCORDANCE WITH THE GRADATION SPECIFIED IN THE PLANS OR, WITH APPROVAL OF THE ENGINEER, A RIPRAP GRADATION MEETING A D50 GREATER THAN OR EQUAL TO 0.8 FEET. D50 IS DEFINED AS THE MEAN ROCK SIZE AS DESCRIBED IN THE FHWA HYDRAULIC ENGINEERING CIRCULARS (HEC 11, HEC 14 AND HEC 15).

IF GRAVEL IS USED FOR THE BEDDING MATERIAL UNDER RIPRAP, THE GRAVEL SHALL BE CRUSHED AS ALLOWED UNDER ARTICLE 1005.01.

G.N. 406
THE QUANTITIES INCLUDED IN THE PLANS FOR HOT-MIX ASPHALT RESURFACING ARE INTENDED TO GIVE THE COVERAGE SHOWN ON THE TYPICAL CROSS SECTIONS. IT IS NOT INTENDED TO INCREASE THE THICKNESS OF THE HOT-MIX ASPHALT MIXTURE IN ORDER TO USE ALL OF THE QUANTITIES INCLUDED IN THE CONTRACT.

G.N. 406H
THE FOLLOWING MIXTURE REQUIREMENTS ARE APPLICABLE FOR THIS PROJECT:

LOCATION(S):	HOT-MIX ASPHALT SURFACE COURSE
MIXTURE USE(S):	MAINLINE PAVEMENT
AC/PG:	PG 64-22
RAP 7/8 (MAX)	15
DESIGN AIR VOIDS:	4% @ NDES=50
MIXTURE COMPOSITION:	IL 9.5 (GRADATION MIXTURE)
FRICITION AGGREGATE:	MIX C

LOCATION(S):	INCIDENTAL HOT-MIX ASPHALT SURFACING
MIXTURE USE(S):	ENTRANCES
AC/PG:	PG 64-22
RAP 7/8 (MAX)	15
DESIGN AIR VOIDS:	4% @ NDES=50
MIXTURE COMPOSITION:	IL 9.5 (GRADATION MIXTURE)
FRICITION AGGREGATE:	MIX C

G.N. 542
BEFORE ORDERING PIPE CULVERTS, THE CONTRACTOR SHALL CONSULT THE ENGINEER FOR THE EXACT LENGTHS.

G.N. 542B
ALL THE ENTRANCE CULVERTS LENGTHS SHOWN IN THE PLANS WERE CALCULATED WITH THE ASSUMPTION THAT METAL PIPES AND METAL END SECTION WOULD BE USED.

G.N. 1004.01
COARSE AGGREGATE GRADATION CA-10 MAY BE USED WHENEVER COARSE AGGREGATE CA-6 IS SPECIFIED IN THE STANDARD SPECIFICATIONS.

G.N.-20038
AN ALUMINUM TABLET OF THE TYPE SHOWN ON STANDARD 667101 SHALL BE PLACED ON THE PROPOSED STRUCTURE AS DIRECTED BY THE ENGINEER. THE BENCH MARK ELEVATION WILL BE ESTABLISHED AND MARKED BY THE DEPARTMENT. THIS WORK WILL BE PAID FOR AT THE CONTRACT UNIT PRICE EACH FOR PERMANENT BENCH MARKS.

THERE ARE NO COMMITMENTS FOR THIS PROJECT.

INDEX OF SHEETS

1	COVER SHEET
2	INDEX OF SHEETS, HIGHWAY STANDARDS AND GENERAL NOTES
3	SUMMARY OF QUANTITIES
4-5	EXISTING AND PROPOSED TYPICAL SECTIONS
6	SCHEDULE OF QUANTITIES
7	PLAN AND PROFILE SHEET
8-13	BRIDGE PLANS
14	DETOUR SIGNING DETAIL
15	ROADWAY DETAILS
16-18	TYPICAL APPLICATION OF PAVEMENT MARKINGS
19-24	ROADWAY CROSS SECTIONS

HIGHWAY STANDARDS

000001-04	STANDARD SYMBOLS, ABBREVIATIONS & PATTERNS
001001-01	AREAS OF REINFORCEMENT BARS
001006	DECIMAL OF AN INCH AND OF A FOOT
280001-03	TEMPORARY EROSION CONTROL SYSTEMS
515001-02	NAME PLATE FOR BRIDGES
542401	METAL END SECTIONS FOR PIPE CULVERTS
630001-07	STEEL PLATE BEAM GUARDRAIL
630301-04	SHOULDER WIDENING FOR TYPE 1 (SPECIAL) GUARDRAIL TERMINALS
631032-03	TRAFFIC BARRIER TERMINAL, TYPE 6A
635006-02	REFLECTOR AND TERMINAL MARKER PLACEMENT
635011-01	REFLECTOR MARKER AND MOUNTING DETAILS
667101	PERMANENT SURVEY MARKERS
701001-01	OFF-RD OPERATIONS, 2L, 2W, MORE THAN 15' AWAY
701006-02	OFF-RD OPERATIONS, 2L, 2W, 15' TO 24" FROM PAVEMENT EDGE
701301-02	LANE CLOSURE, 2L, 2W, SHORT TIME OPERATIONS
702001-06	TRAFFIC CONTROL DEVICES
780001-01	TYPICAL PAVEMENT MARKINGS

PLOT DATE : 10/19/2005
 FILE NAME : c:\p1\74147\74147.dwg
 PLOT SCALE : 1/8"=1'-0"
 USER NAME : kgayrb

REVISIONS	
NAME	DATE

ILLINOIS DEPARTMENT OF TRANSPORTATION

**INDEX OF SHEETS,
HIGHWAY STANDARDS
AND GENERAL NOTES**

DATE 2/06
DRAWN BY MLO
CHECKED BY PBB

F.A.P. RTE.	SECTION	COUNTY	TOTAL SHEETS	SHEET NO.
758	3BR-1	MOULTRIE	24	3
STA.		TO STA.		
FED. ROAD DIST. NO.		ILLINOIS FED. AID PROJECT		

PAY CODE NUMBER	ITEM DESCRIPTION	UNIT	TOTAL QUANTITY	80% FEDERAL 20% STATE X080-2A
20200100	EARTH EXCAVATION	CU YD	35	35
20400800	FURNISHED EXCAVATION	CU YD	239	239
25000200	SEEDING CLASS 2	ACRE	0.5	0.5
25000400	NITROGEN FERTILIZER NUTRIENT	POUND	46	46
25000500	PHOSPHORUS FERTILIZER NUTRIENT	POUND	46	46
25000600	POTASSIUM FERTILIZER NUTRIENT	POUND	46	46
25100115	MULCH, METHOD 2	ACRE	0.5	0.5
25100630	EROSION CONTROL BLANKET	SQ YD	710	710
28000250	TEMPORARY EROSION CONTROL SEEDING	POUND	50	50
28000300	TEMPORARY DITCH CHECKS	EACH	1	1
28000400	PERIMETER EROSION BARRIER	FOOT	430	430
28100107	STONE RIPRAP, CLASS A4	SQ YD	76	76
28200200	FILTER FABRIC	SQ YD	76	76
35101400	AGGREGATE BASE COURSE, TYPE B	TON	1	1
40600100	BITUMINOUS MATERIALS (PRIME COAT)	GALLON	42	42
40603310	HOT-MIX ASPHALT SURFACE COURSE, MIX C, N50	TON	59	59
40800050	INCIDENTAL HOT-MIX ASPHALT SURFACING	TON	3	3
44000198	HOT-MIX ASPHALT SURFACE REMOVAL, VARIABLE DEPTH	SQ YD	468	468
48101200	AGGREGATE SHOULDERS, TYPE B	TON	152	152
50101500	REMOVAL OF EXISTING SUPERSTRUCTURES	EACH	1	1
50102400	CONCRETE REMOVAL	CU YD	0.8	0.8
50105200	REMOVE EXISTING CULVERTS	EACH	1	1
50300225	CONCRETE STRUCTURES	CU YD	1.0	1.0
50300260	BRIDGE DECK GROOVING	SQ YD	167	167
50300300	PROTECTIVE COAT	SQ YD	183	183
X5030305	CONCRETE WEARING SURFACE, 5"	SQ YD	179	179
50301200	CONCRETE WEARING SURFACE	SQ YD	179	179

PAY CODE NUMBER	ITEM DESCRIPTION	UNIT	TOTAL QUANTITY	80% FEDERAL 20% STATE X080-2A
50400405	PRECAST PRESTRESSED CONCRETE DECK BEAMS (21' DEPTH)	SQ FT	1546	1546
50800205	REINFORCEMENT BARS, EPOXY COATED	POUND	2510	2510
50901005	STEEL BRIDGE RAIL, TYPE 5M	FOOT	97	97
50901050	STEEL RAILING, TYPE 5M	FOOT	97	97
51500100	NAME PLATES	EACH	1	1
54200223	PIPE CULVERTS, CLASS D, TYPE 1, 18'	FOOT	80	80
54213453	END SECTIONS, 18'	EACH	2	2
* 63000000	STEEL PLATE BEAM GUARD RAIL, TYPE A	FOOT	325.0	325.0
* 63100087	TRAFFIC BARRIER TERMINAL, TYPE 6A	EACH	4	4
* 63100167	TRAFFIC BARRIER TERMINAL, TYPE 1, SPECIAL (TANGENT)	EACH	2	2
* 63100169	TRAFFIC BARRIER TERMINAL, TYPE 1, SPECIAL (FLARED)	EACH	2	2
63200310	GUARDRAIL REMOVAL	FOOT	652	652
67000400	ENGINEER'S FIELD OFFICE, TYPE A	CAL MO	2	2
67100100	MOBILIZATION	L SUM	1	1
70101800	TRAFFIC CONTROL AND PROTECTION (SPECIAL)	L SUM	1	1
* 78001110	PAINT PAVEMENT MARKING - LINE 4"	FOOT	473	473
* 78200400	GUARDRAIL REFLECTORS	EACH	9	9
* 78201000	TERMINAL MARKER - DIRECT APPLIED	EACH	4	4
X7015005	CHANGEABLE MESSAGE SIGN	CAL DA	14	14
20038700	PERMANENT BENCH MARKS	EACH	1	1

* DENOTES SPECIALTY ITEM

PLOT DATE : 10/29/2008
 PLOT SCALE : 1/8"=1'-0"
 USER NAME : kagrb

REVISIONS	
NAME	DATE

ILLINOIS DEPARTMENT OF TRANSPORTATION

SUMMARY OF QUANTITIES

DRAWN BY MLO
CHECKED BY PBB

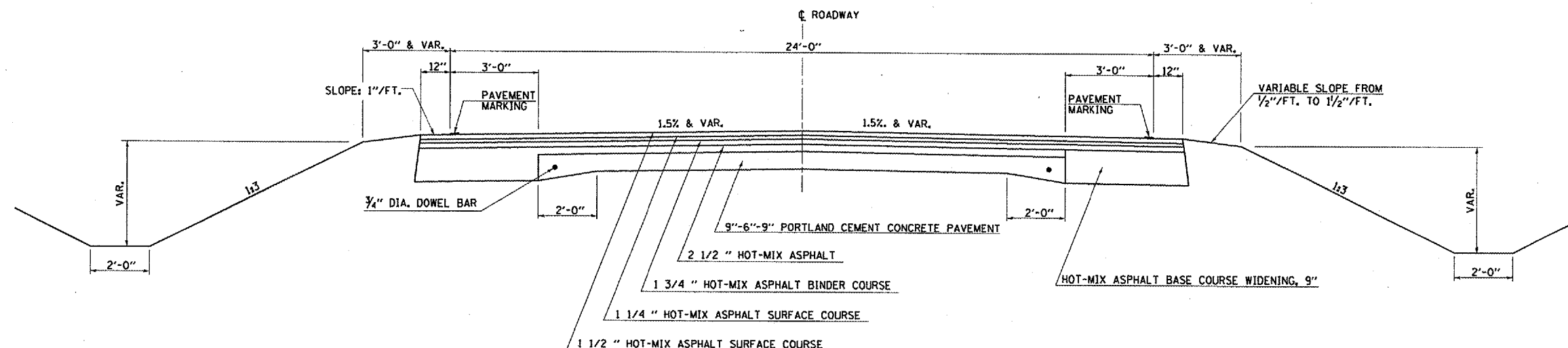
DATE 2/06

Rev.

F.A.P. RTE.	SECTION	COUNTY	TOTAL SHEETS	SHEET NO.
758	3BR-1	MOULTRIE	24	4
STA.		TO STA.		
FED. ROAD DIST. NO.		ILLINOIS FED. AID PROJECT		

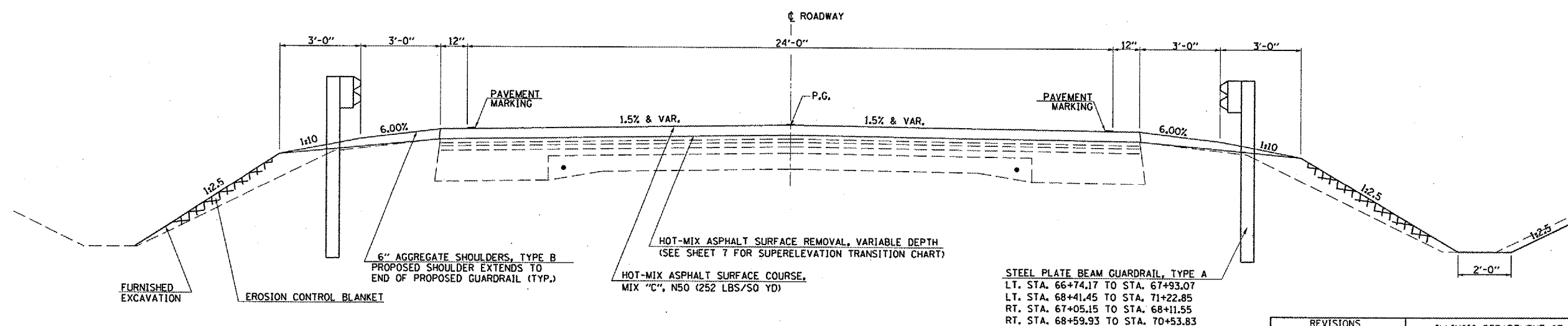
EXISTING TYPICAL CROSS SECTION

STA 67+10.00 TO STA 68+02.50
STA 68+50.50 TO STA 69+20.00



PROPOSED TYPICAL CROSS SECTION

STA 67+10.00 TO STA 68+02.50
STA 68+50.50 TO STA 69+20.00



STEEL PLATE BEAM GUARDRAIL, TYPE A
LT. STA. 66+74.17 TO STA. 67+93.07
LT. STA. 68+41.45 TO STA. 71+22.85
RT. STA. 67+05.15 TO STA. 68+11.55
RT. STA. 68+59.93 TO STA. 70+53.83

REVISIONS	
NAME	DATE

ILLINOIS DEPARTMENT OF TRANSPORTATION

TYPICAL SECTIONS

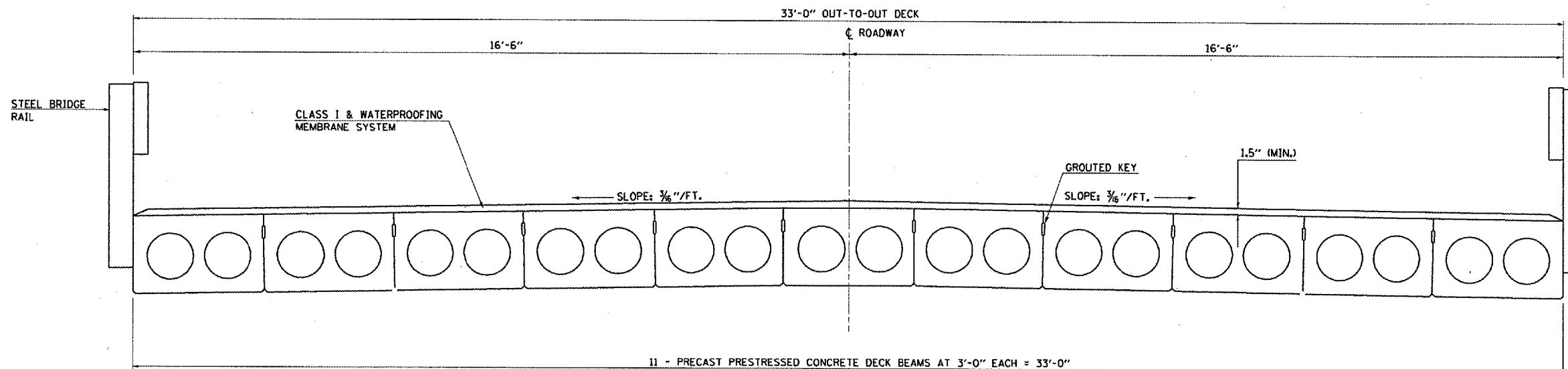
DATE 2/06
DRAWN BY MLO
CHECKED BY PBB

PLOT DATE = 10/19/2006
 PLOT SCALE = 1/4" = 1'-0"
 USER NAME = hspg

F.A.P. RTE.	SECTION	COUNTY	TOTAL SHEETS	SHEET NO.
758	3BR-1	MOULTRIE	24	5
STA.		TO STA.		
FED. ROAD DIST. NO.		ILLINOIS FED. AID PROJECT		

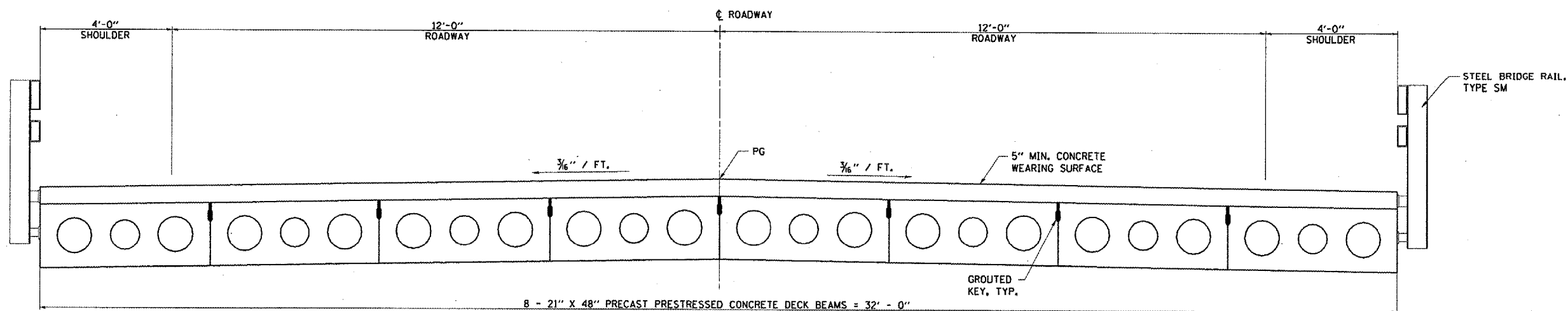
EXISTING TYPICAL CROSS SECTION

S.N. 070-0033
STATION 68+02.50 TO STATION 68+50.50



PROPOSED TYPICAL CROSS SECTION

S.N. 070-0033
STATION 68+02.50 TO STATION 68+50.50



PLOT DATE : 10/19/2006
 PLOT SCALE : 1/8" = 1'-0"
 USER NAME : jh
 USER : jh

REVISIONS	
NAME	DATE

ILLINOIS DEPARTMENT OF TRANSPORTATION

TYPICAL SECTIONS

DATE 2/06
DRAWN BY MLO
CHECKED BY PBB

F.A.P. RTE.	SECTION	COUNTY	TOTAL SHEETS	SHEET NO.
758	3BR-1	MOULTRIE	24	6
STA.		TO STA.		
FED. ROAD DIST. NO.		ILLINOIS FED. AID PROJECT		

EARTHWORK SCHEDULE

LOCATION	EARTH EXCAVATION (CU YD)	EARTH * ADJUSTED FOR SHRINKAGE (CU YD)	EMBANKMENT (FILL) (CU YD)	EARTHWORK BALANCE WASTE (+) OR SHORTAGE (-) (CU YD)
LEFT SIDE	20	15	125	-110
RIGHT SIDE	15	11	140	-129
TOTAL	35	26	265	-239

* AN EARTH SHRINKAGE FACTOR OF 0.25 HAS BEEN APPLIED.
 EARTH EXCAVATION TOTAL = 35 CU YD
 FURNISHED EXCAVATION = 239 CU YD

SEEDING, FERTILIZERS AND MULCH

STATION	TO STATION	SEEDING CLASS 2 (ACRE)	NITROGEN (POUND)	PHOSPHORUS (POUND)	POTASSIUM (POUND)	MULCH METHOD 2 (ACRE)	TEMPORARY EROSION CONTROL SEEDING (POUND)
66+97.00	71+00.00	0.25	23.0	23.0	23.0	0.25	25.0
66+65.00	71+30.00	0.25	23.0	23.0	23.0	0.25	25.0
TOTAL		0.50	46.0	46.0	46.0	0.50	50.0

EROSION CONTROL BLANKET

STATION	TO STATION	OFFSET	SQ YD
66+97.00	71+00.00	RT	355
66+65.00	71+30.00	LT	355
TOTAL			710

TEMPORARY DITCH CHECK

STATION	OFFSET	EACH
69+90.00	RT	1

PERIMETER EROSION BARRIER

STATION TO	STATION	OFFSET	FOOT
66+97.00	67+75.00	LT	110
66+65.00	71+30.00	LT	280
	68+15.00	RT	20
	68+85.00	RT	20
TOTAL			430

BITUMINOUS MATERIALS (PRIME COAT)

STATION TO	STATION	GALLONS
67+10.00	68+02.50	20
68+50.50	69+20.00	15
PE	69+92.30	7
TOTAL		42

HOT-MIX ASPHALT SURFACE REMOVAL, VARIABLE DEPTH

STATION TO	STATION	SQ YD
67+10.00	68+02.50	267
68+50.50	69+20.00	201
TOTAL		468

AGGREGATE SHOULDERS, TYPE B

STATION	TO STATION	OFFSET	TONS
67+07.00	68+10.00	RT	21
68+60.00	71+10.00	RT	45
66+65.00	67+90.00	LT	30
68+40.00	71+30.00	LT	56
TOTAL			152

REMOVE EXISTING CULVERTS

LOCATION	STATION	OFFSET	EACH
MAINLINE	66+92.30	RT	1
TOTAL			1

ENTRANCE CULVERT SCHEDULE

PROPOSED MATERIAL	TYPE	SIDE/STATION	EXISTING CULVERT SIZE	PIPE CULVERT, CLASS D, TYPE I (FT)	END SECTIONS (EACH)
AGG PE	RT/	66+92.30	15"Ø	80	2
TOTAL				80	2

STEEL PLATE BEAM GUARD RAIL, TYPE A

STATION TO	STATION	OFFSET	FOOT
67+24.17	67+49.17	LT	25.0
68+85.35	70+72.85	LT	187.5
67+55.15	67+67.65	RT	12.5
69+03.83	70+03.83	RT	100.0
TOTAL			325.0

TRAFFIC BARRIER TERMINAL, TYPE 6A

STATION TO	STATION	OFFSET	EACH
67+49.17	67+93.07	LT	1
67+67.65	68+11.55	RT	1
68+41.45	68+85.35	LT	1
68+59.93	69+03.83	RT	1
TOTAL			4

TRAFFIC BARRIER TERMINAL, TYPE 1, SPECIAL (TANGENT)

STATION TO	STATION	OFFSET	EACH
70+72.85	71+22.85	LT	1
70+03.83	70+53.83	RT	1
TOTAL			2

TRAFFIC BARRIER TERMINAL, TYPE 1, SPECIAL (FLARED)

STATION TO	STATION	OFFSET	EACH
66+74.17	67+24.17	LT	1
67+05.15	67+55.15	RT	1
TOTAL			2

GUARDRAIL REMOVAL

STATION TO	STATION	OFFSET	FOOT
66+80.12	67+93.07	LT	113
67+48.47	68+11.55	RT	63
68+41.45	70+91.86	LT	250
68+59.93	70+85.96	RT	226
TOTAL			652

PAINT PAVEMENT MARKING - LINE 4"

STATION	TO STATION	RIGHT (WHITE) (FEET)	CENTER (YELLOW) (FEET)	LEFT (WHITE) (FEET)	TOTAL (FEET)
67+10.00	69+20.00	210	53	210	473

GUARDRAIL REFLECTORS

STATION	OFFSET	EACH
67+52.85	LT	1
68+32.85	LT	1
69+12.85	LT	1
69+92.85	LT	1
70+72.85	LT	1
67+55.15	RT	1
68+35.15	RT	1
69+15.15	RT	1
69+95.15	RT	1
TOTAL		9

TERMINAL MARKER - DIRECT APPLIED

STATION	OFFSET	EACH
66+74.17	LT	1
67+05.15	RT	1
71+22.85	LT	1
70+53.83	RT	1
TOTAL		4

HOT-MIX ASPHALT SURFACE COURSE, MIX C, N50

STATION TO	STATION	TONS
67+10.00	68+02.50	33.7
68+50.50	69+20.00	25.3
TOTAL		59.0

INCIDENTAL HOT-MIX ASPHALT SURFACING

STATION TO	STATION	OFFSET	TONS
66+76.30	67+08.30	RT	3
TOTAL			3

AGGREGATE BASE COURSE, TYPE B

STATION TO	STATION	OFFSET	TONS
66+76.30	67+08.30	RT	1
TOTAL			1

REVISIONS	
NAME	DATE

ILLINOIS DEPARTMENT OF TRANSPORTATION

SCHEDULE OF QUANTITIES

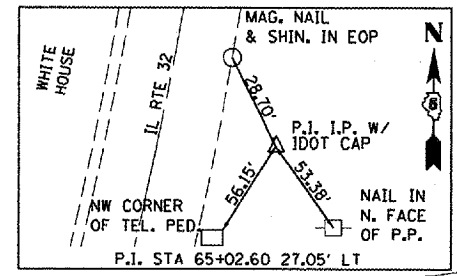
DATE 2/06
DRAWN BY MLO
CHECKED BY PBB

PLT DATE = 10/20/2005
 FILE NAME = c:\p\projects\758\11-12-05\11-12-05\11-12-05.dwg
 PLOT SCALE = 1/8"=1'-0"
 USER = pbbe

F.A.P. RTE.	SECTION	COUNTY	TOTAL SHEETS	SHEET NO.
758	3BR-1	MOULTRIE	24	7

STA. 65+00.00 TO STA. 71+00.00
 FED. ROAD DIST. NO. ILLINOIS FED. AID PROJECT

BENCH MARK: CHISELED "□" ON NORTHEAST WINGWALL OF S.N. 070-0033, ELEV= 650.32 T14N, R5E, SEC 3 3RD P.M.



PROPOSED PROJECT BEGINS STA. 67+10.00

REMOVE EXISTING CULVERT RT STA. 66+92.30 1 EACH

TRAFFIC BARRIER TERMINAL TYPE 6A (TYP. 4 LOCATIONS)

GUARDRAIL REMOVAL (TYP.)

TIMBER LINE

S.N. 070-0033 PRECAST PRESTRESSED CONCRETE DECK BEAMS (21" DEPTH) @ STA. 68+26.50 LENGTH = 48'-40" BK TO BK ABUT., HORIZ. CLR. = 32'-0" SKEW = 30° RT. FWD. SEE BRIDGE PLANS

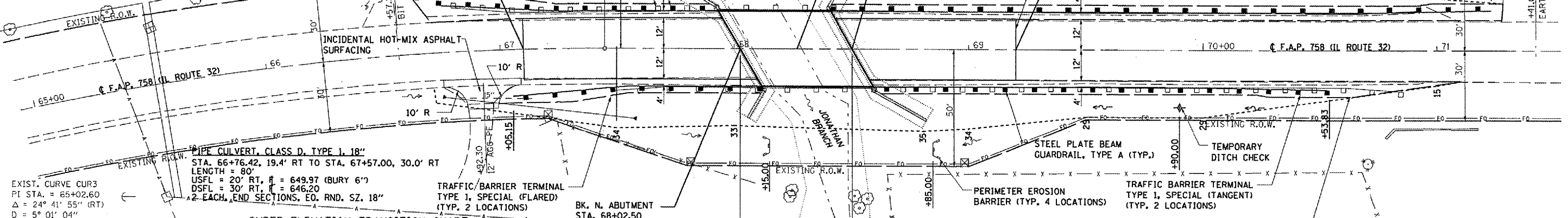
SAWCUT INCLUDED IN COST OF HOT-MIX ASPHALT SURFACE REMOVAL (TYP. EACH END OF JOB)

PROPOSED PROJECT ENDS STA. 69+20.00

BK. S. ABUTMENT STA. 68+50.50 ELEV. 649.90

CONSTRUCTION LIMITS

TIMBER LINE



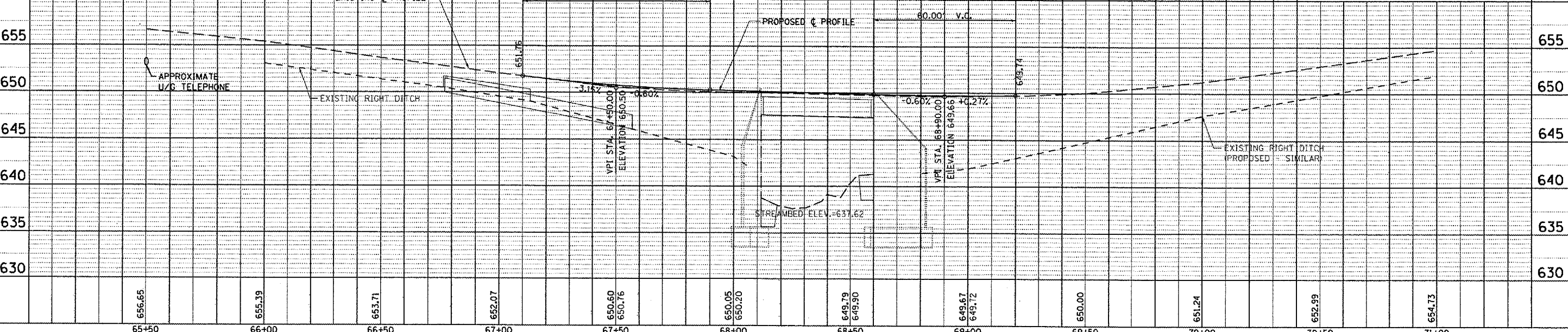
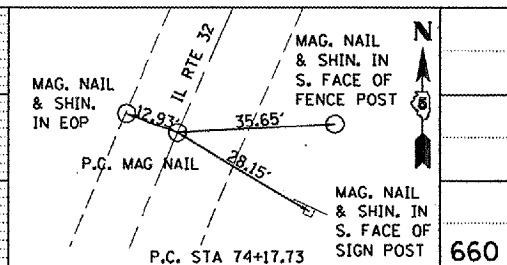
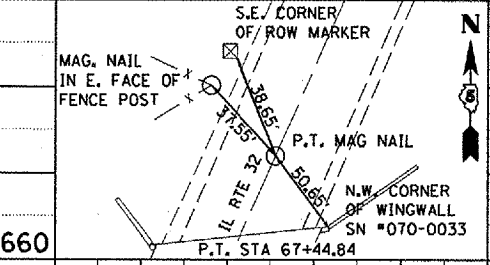
EXIST. CURVE CUR3
 PI STA. = 65+02.60
 $\Delta = 24^\circ 41' 55''$ (RT)
 $D = 5^\circ 01' 04''$
 $R = 1,141.88'$
 $T = 250.00'$
 $L = 492.23'$
 $E = 27.05'$
 S.E. RUN = 8.0%
 P.C. STA. = 62+52.60
 P.T. STA. = 67+44.84

SUPER ELEVATION TRANSITION CHART

STATION	PR SLOPE		LT EOP		EX		PR		RT EOP		REMARKS
	LT	RT	EX	PR	EX	PR	EX	PR			
67+10.00	+3.58	-4.92	652.19	652.19	651.76	651.76	651.17	651.17	651.17	651.17	MATCH EXISTING
67+50.00	+1.00	-3.17	650.70	650.88	650.60	650.76	650.31	650.38	650.38	650.38	
67+90.00	-1.50	-1.50	650.05	650.08	650.09	650.26	649.85	650.08	650.08	650.08	NORMAL CROWN

NOTE: SOME QUANTITIES CONTAINED HEREIN ARE OUTSIDE THE PROJECT LIMITS

EARTH SHOULDER SHOULDER WIDENING IN ACCORDANCE WITH STD. 630301 (TYP. 4 LOCATIONS)



DATE: 10/20/2006
 BY: [Signature]
 CHECKED: [Signature]
 DATE: 10/13/06
 USER: [Signature]

Benchmark: Chiseled "□" on northeast wingwall of S.N. 070-0033
Elevation 650.32.

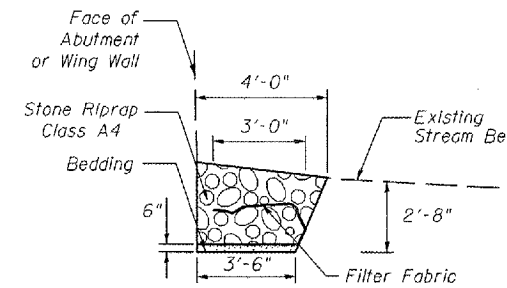
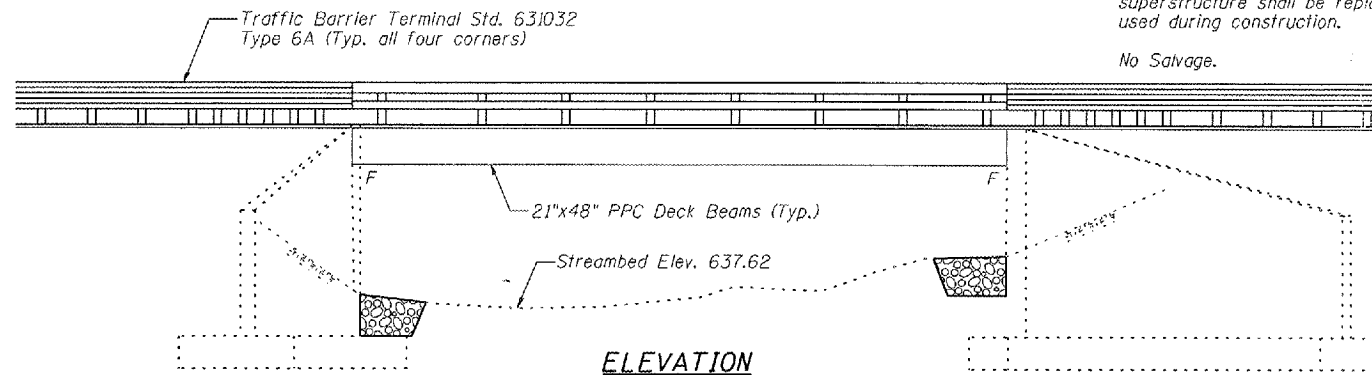
Existing Structure: Structure Number 070-0033 was built in 1975 as FA-33 (S.B.I. Route 32), Section 3 BR. The structure consists of single span PPC-deck beams on closed abutments. The bk. to bk. abutments is 48'-0" and the O.-O. width is 33'-0". The existing superstructure shall be replaced with PPC deck beams. Road closure shall be used during construction.

ROUTE NO.	SECTION	COUNTY	SHEET	SHEET NO.
758	3BR-1	MOULTRIE	24	8
SHEET NO. 1 6 SHEETS				

Contract #74147

TOTAL BILL OF MATERIAL

ITEM	UNIT	SUPER	SUB	TOTAL
Stone Riprap, Class A4	Sq. Yd.		76	76
Filter Fabric	Sq. Yd.		76	76
Removal of Existing Superstructure	Each	1		1
Concrete Removal	Cu. Yd.		0.8	0.8
Concrete Structures	Cu. Yd.		1.0	1.0
Bridge Deck Grooving	Sq. Yd.	167		167
Protective Coat	Sq. Yd.	183		183
Concrete Wearing Surface, 5"	Sq. Yd.	179		179
Precast Prestressed Concrete Deck Beams (21" Depth)	Sq. Ft.	1546		1546
Reinforcement Bars, Epoxy Coated	Pound	2460	50	2510
Steel Railings, Type SM	Foot	97		97
Name Plates	Each		1	1



SECTION F-F

GENERAL NOTES

Plan dimensions and details relative to existing plans are subject to routine variations. The Contractor shall field verify existing dimensions and details affecting new construction and make necessary approved adjustments prior to construction or ordering of materials. Such variations shall not be cause for additional compensation for a change in scope of the work, however, the Contractor will be paid for the quantity actually furnished based upon the unit price bid for the work.

All construction joints shall be bonded. Removal of existing bridge rail included in the cost of Removal of Existing Superstructures. The minimum thickness of the Concrete overlay shall be 5" and varies as required to adjust for the new profile grade and beam camber.

The cut strands at each beam end shall be given two coats of zinc dust spray or paint meeting the requirements of ASTM A 780. The zinc dust spray or paint shall be applied before corrosion appears and allowed to dry according to the manufacturer's specifications prior to another coat of zinc. A concrete sealer meeting the requirements of Section 587 of the Standard Specifications shall be applied along the entire length of fascia beams to both the exterior vertical face and 9" in on the underside surface of the beams. The sealer shall be applied after visible crack growth has subsided. This work shall be performed by the producer and included with the cost of the beam.

The contractor is advised that the existing PPC Deck Beams are in a deteriorated condition with reduced load carrying capacity. It is the contractor's responsibility to account for the condition of the beams when developing construction procedures for removal and replacement of the superstructure.

The Contractor shall temporarily brace the top of abutments prior to the removal of the existing superstructure. The Contractor shall submit the bracing system to the Engineer for approval prior to fabrication or installation. Cost included in the cost of Removal of Existing Superstructure.

If the contractor's procedure for existing beam removal or placement of new beams involves placement of cranes or other heavy equipment on new beams, a detailed procedure shall be submitted to the Engineer for approval. The procedure shall include calculations, prepared and sealed by an Illinois Licensed Structural Engineer, verifying that the equipment and procedure used will not overstress the new beams. To distribute load to multiple beams and protect the concrete, in all cases a double layer mat of heavy timbers shall be used at all times under crane tracks or wheels and any outriggers in the down position. If necessary, shims shall be used under the crane mat to ensure uniform contact with the underlying beams. Prior to placement of the timber mats the following shall be done: placement and tightening of transverse tie assemblies, grouting and curing the dowel rods 24 hours minimum and grouting and curing the shear keys. A temporary means of lateral restraint will be required for fascia beams at expansion ends of beams to prevent movement of the beams.

Reinforcement bars shall conform to the requirements of ASTM A-706 GR60 (IL Modified) See Special Provisions.

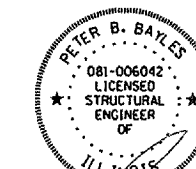
STATION 68+26.50
REBUILT 20... BY
STATE OF ILLINOIS
F.A.P. ROUTE 758
SECTION 3BR-1
LOADING HS20
STR. NO. 070-0033

NAME PLATE
See Std. 515001

*Existing Name Plate shall be cleaned and relocated adjacent to new Name Plate. Cost included with Name Plates.

INDEX OF SHEETS

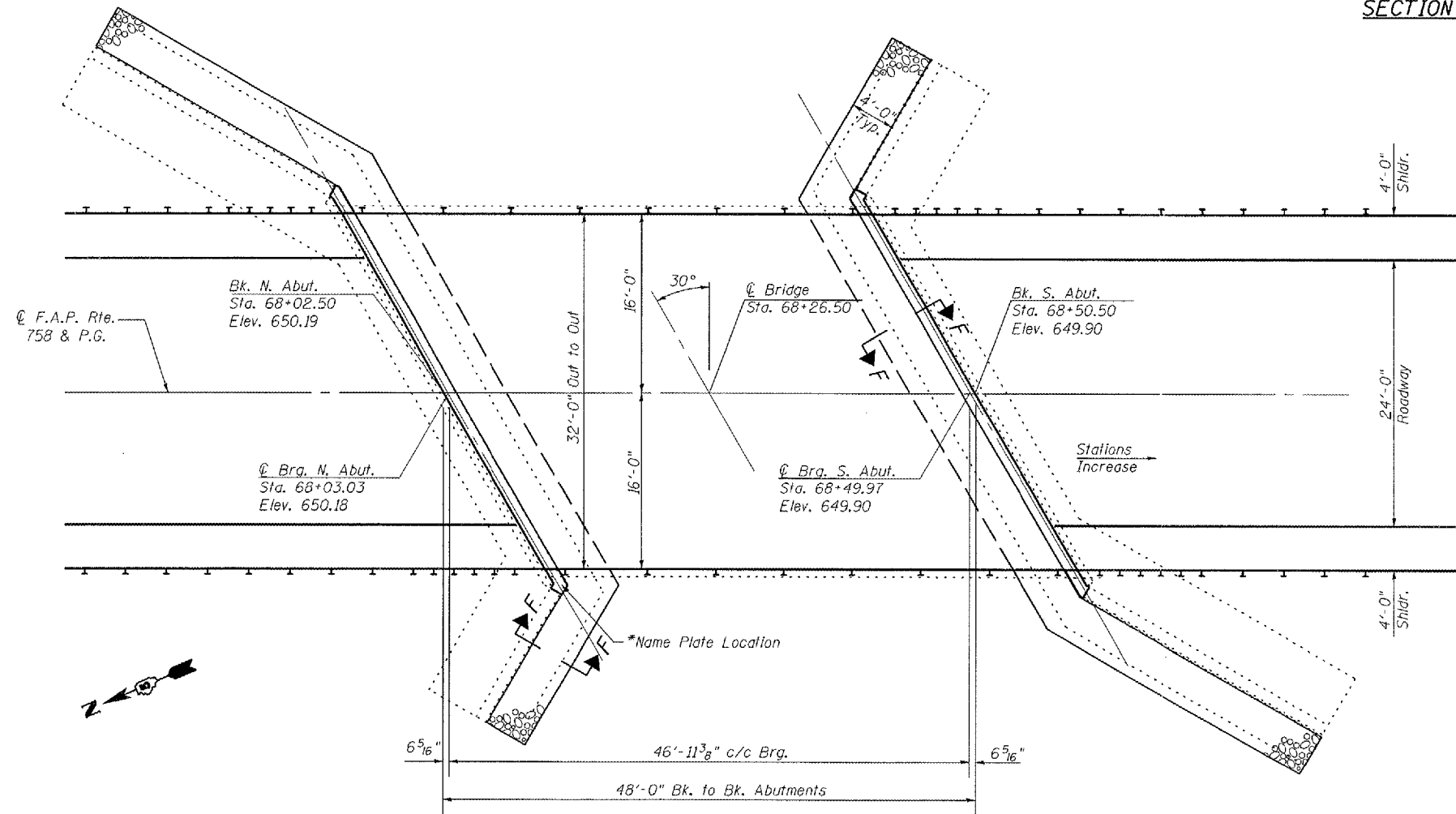
- 1 General Plan
- 2 Type SM Steel Bridge Rail Side Mounted
- 3 Superstructure
- 4-5 Superstructure Details
- 6 Abutments



Peter B. Bayles, S.E. Date 11/29/06
Structural Engineer License No. 081-006042
Expiration Date: 11/30/2006

ILLINOIS DEPARTMENT OF TRANSPORTATION
GENERAL PLAN
IL ROUTE 32 OVER
JONATHAN BRANCH
F.A.P. ROUTE 758 SECTION 3BR-1
MOULTRIE COUNTY
STATION 68+26.50
STRUCTURE NO. 070-0033

DATE: MARCH 2006 DRAWN BY: MLO CHECKED BY: PBB



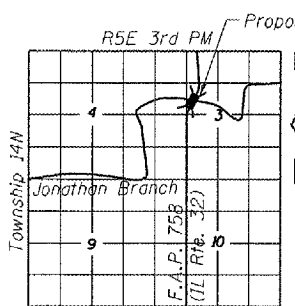
PLAN

DESIGN STRESSES

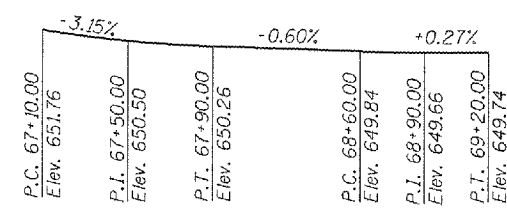
- FIELD UNITS**
- $f'_c = 3,500$ psi (Concrete structures)
 - $f'_c = 5,000$ psi (Concrete wearing surface)
 - $f_y = 60,000$ psi (Reinforcement)
- PRECAST PRESTRESSED UNITS**
- $f'_c = 5,000$ psi
 - $f'_{ci} = 4,000$ psi
 - $f'_s = 270,000$ psi ($1/2"$ ϕ Low Relax. strands)
 - $f_{si} = 201,960$ psi ($1/2"$ ϕ Low Relax. strands)
- EXISTING SUBSTRUCTURE FIELD UNITS**
- $f'_c = 1,000$ psi
 - $f_s = 20,000$ psi (Reinforcement)

DESIGN SPECIFICATIONS

2002, AASHTO
LOADING HS-20-44
(Allow 25 psf for future wearing surface)

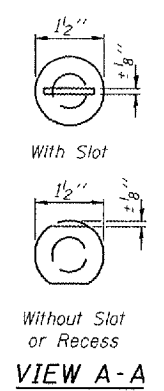
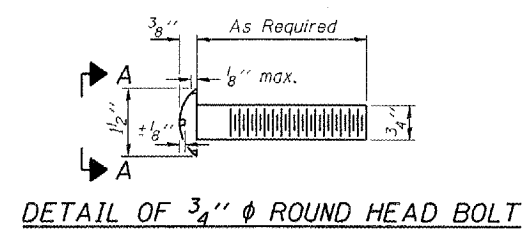


LOCATION SKETCH

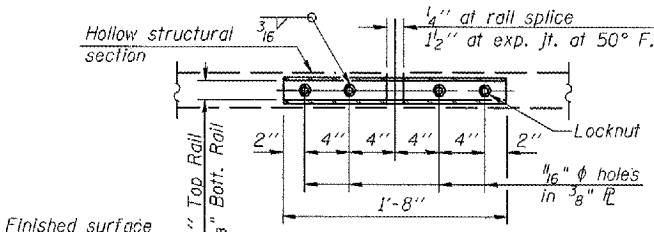
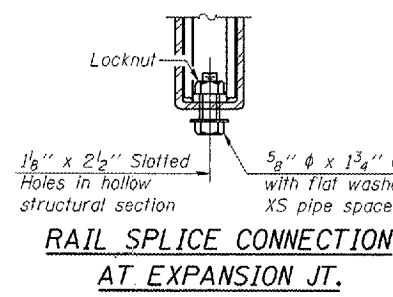


PROFILE GRADE
(along $\text{\textcircled{C}}$ F.A.P. 758)

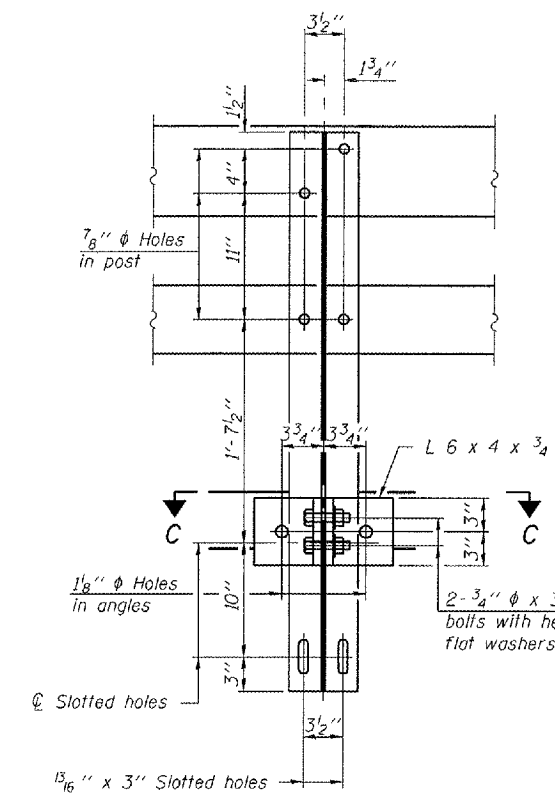
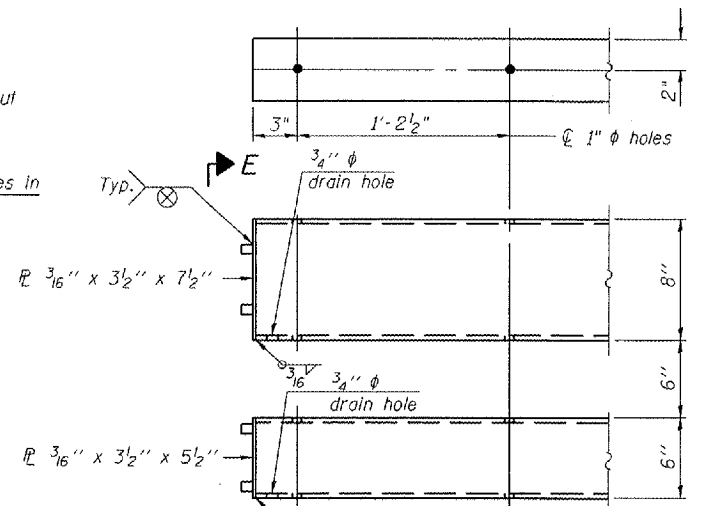
PROJECT NO.	SECTION	COUNTY	SHEETS	"OF"	SHEET NO. 2
758	3BR-1	MOULTRIE	24	9	6 SHEETS
FED. ROAD DIST. NO.	ILLINOIS	FED. AID PROJECT			
Contract #74147					



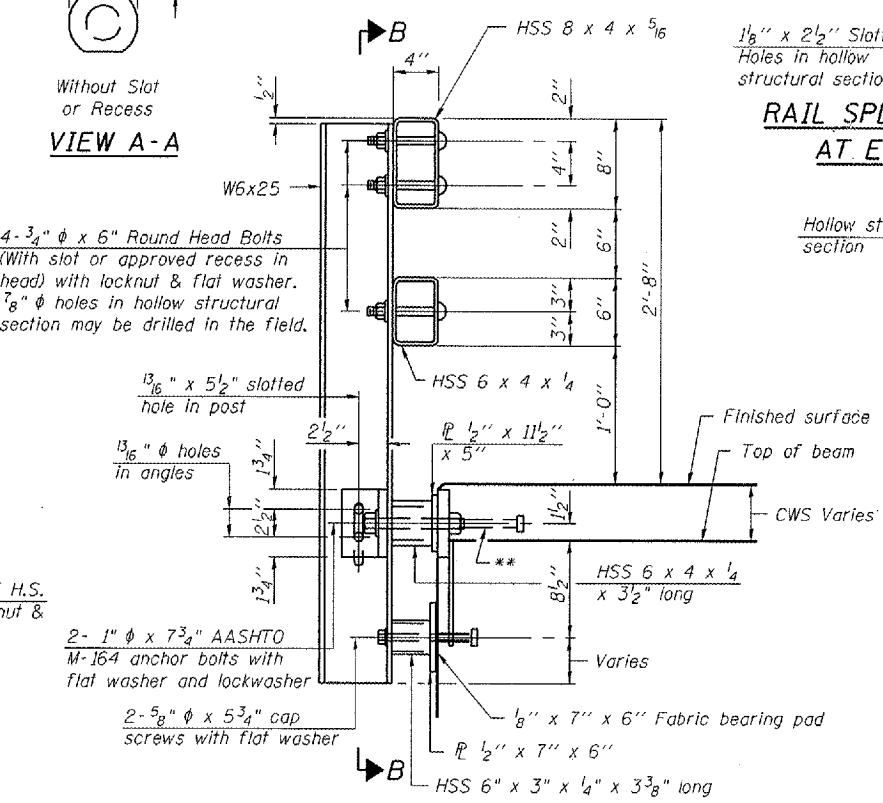
4- 3/4" ϕ x 6" Round Head Bolts (With slot or approved recess in head) with locknut & flat washer. 7/8" ϕ holes in hollow structural section may be drilled in the field.



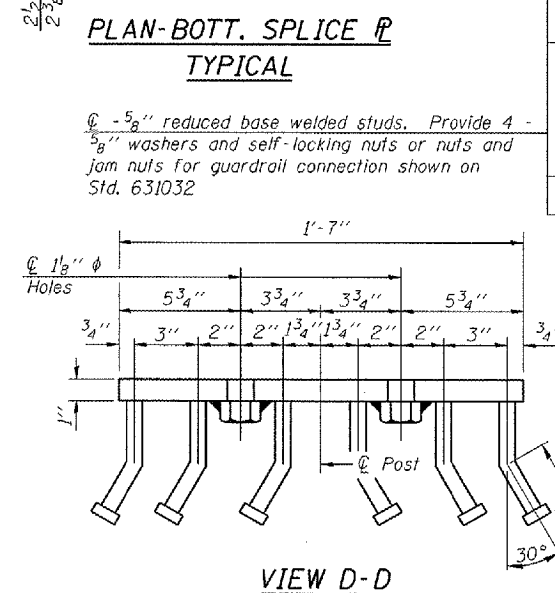
SECTION AT RAIL SPLICE



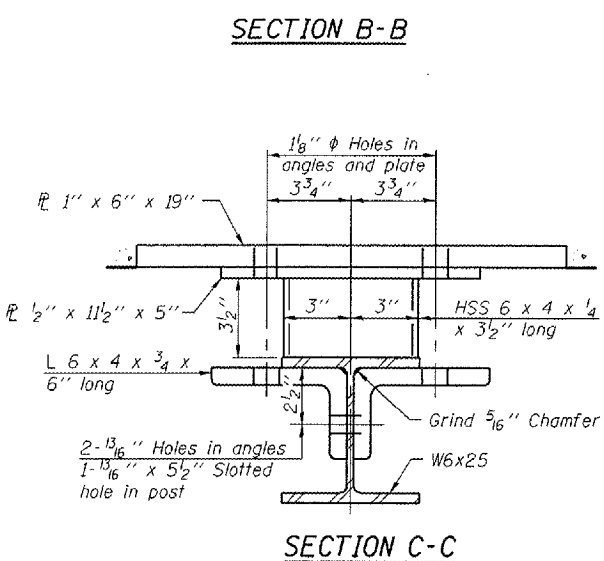
SECTION B-B



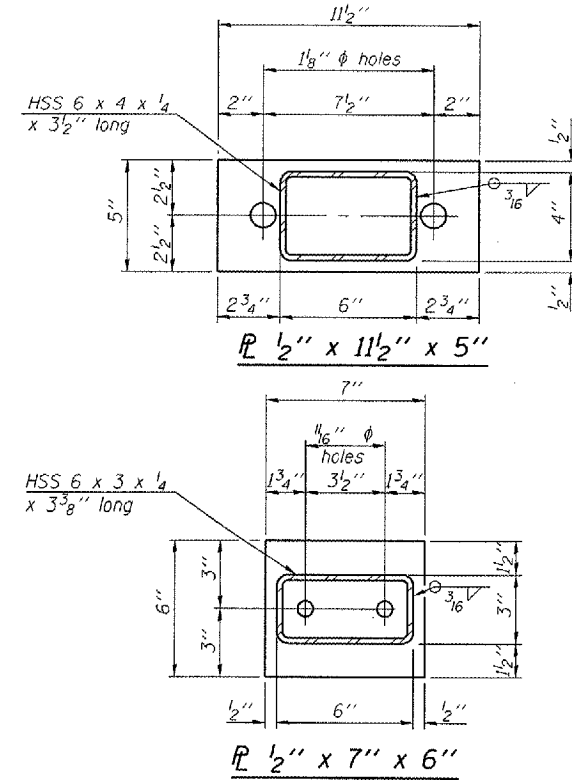
SECTION AT RAIL POST



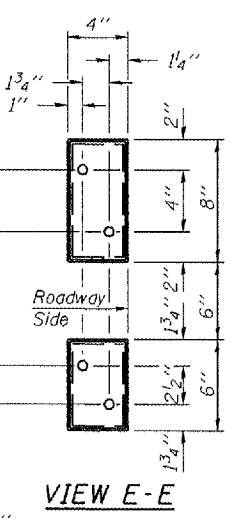
VIEW D-D



SECTION C-C



ANCHOR DEVICE



VIEW E-E

Notes:
 All field drilled holes shall be coated with an approved zinc rich paint before erection.
 For multi-span bridges, sufficient 1/4" x 6" x 1'-2" galvanized steel shims shall be provided to align rail between adjacent spans. Cost included with Steel Bridge Rail, Type SM.
 Steel rail elements shall be galvanized according to Article 509.05 of the Standard Specifications.
 ** The studs of the anchor device shall be placed below the top reinforcement bars and the outermost longitudinal reinforcement bar shall be placed directly above the studs of the rail post anchor device.

BILL OF MATERIAL

Item	Unit	Quantity
Steel Railing, Type SM	Foot	97

ILLINOIS DEPARTMENT OF TRANSPORTATION
 TYPE SM
 STEEL BRIDGE RAIL SIDE MOUNTED WITH CONCRETE WEARING SURFACE
 IL ROUTE 32 OVER JONATHAN BRANCH
 F.A.P. ROUTE 758 SECTION 3BR-1
 MOULTRIE COUNTY
 STATION 68+26.50
 STRUCTURE NO. 070-0033

R-34CWS

11-1-06

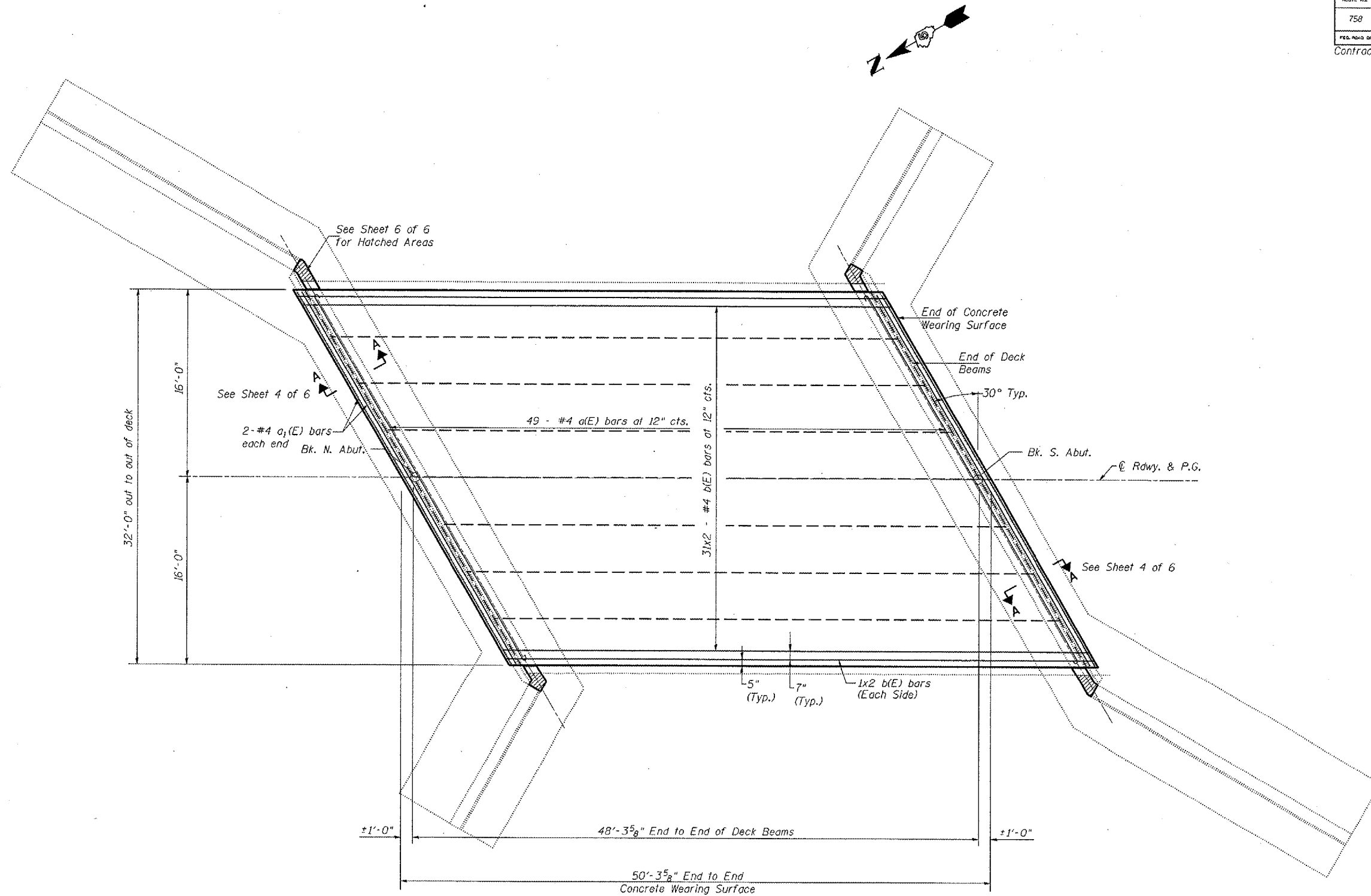
(6'-3" Maximum Post Spacing) (5" minimum to 7 1/8" maximum CWS thickness)

* Threaded areas shall be plugged or blocked off during casting of beam. Galvanized after fabrication.

DATE: MARCH 2006

DRAWN BY: MLO
 CHECKED BY: PBB

ROUTE NO.	SECTION	COUNTY	SHEET	SHEET	SHEET NO. 3
758	3BR-1	MOULTRIE	24	10	6 SHEETS
FED. AID DIST. NO.		ILLINOIS		FED. AID PROJECT	
Contract #74147					



MIN BAR LAPS
#4 bars = 1'-8"

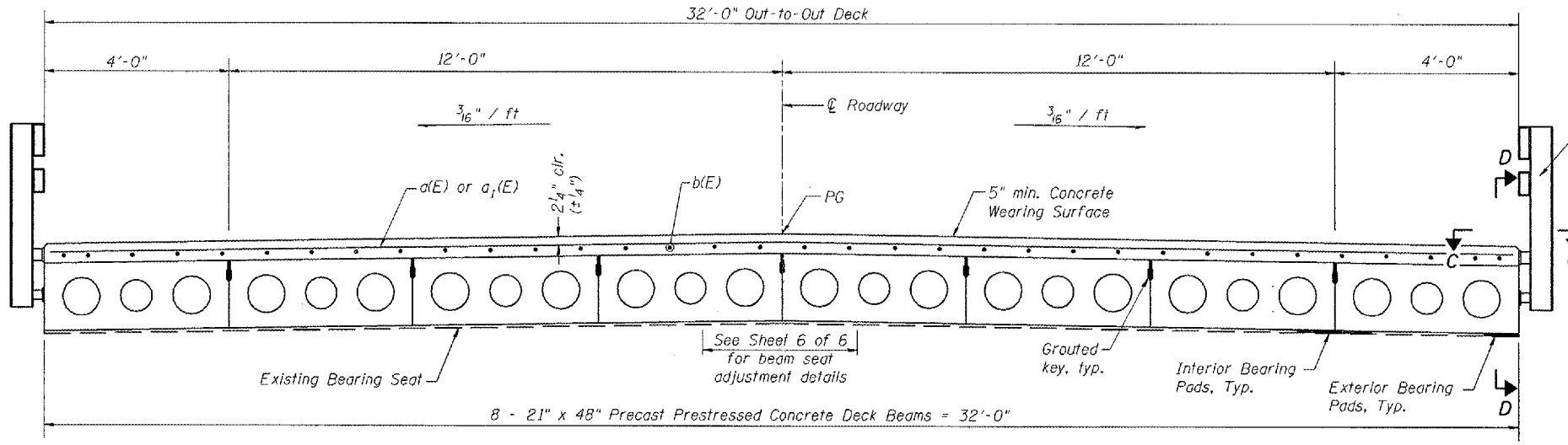
NOTES

Reinforcement bars designated (E) shall be epoxy coated. For remainder of superstructure details, see sheets 4 and 5 of 6. Work this sheet with sheet 4 of 6.
Bars indicated thus 31x2-#4 etc. indicates 31 lines of bars with 2 lengths per line.
For Section "A-A" see sheet 4 of 6.

ILLINOIS DEPARTMENT OF TRANSPORTATION
SUPERSTRUCTURE

IL ROUTE 32 OVER
JONATHAN BRANCH
F.A.P. ROUTE 758 SECTION 3BR-1
MOULTRIE COUNTY
STATION 68+26.50
STRUCTURE NO. 070-0033

DATE: MARCH 2006
DRAWN BY: MLO
CHECKED BY: PBB

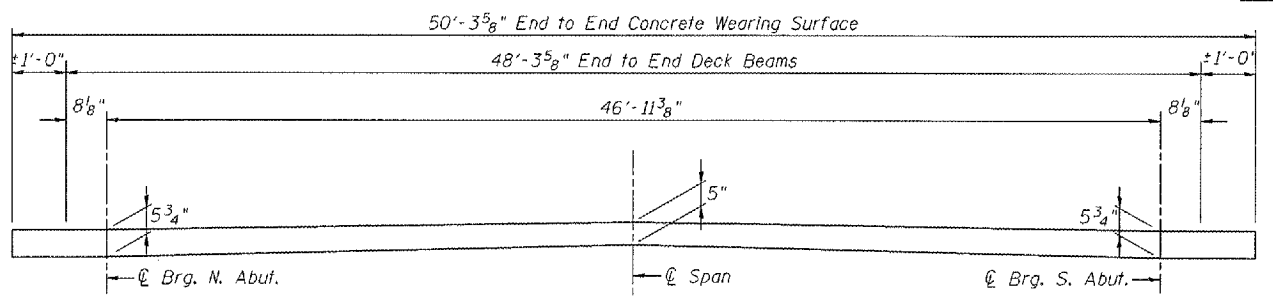


CROSS SECTION

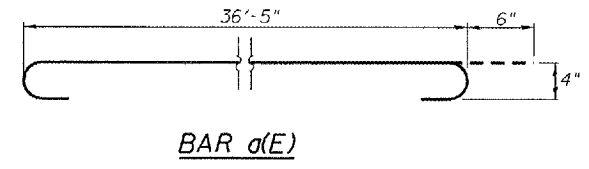
Steel Bridge Rail, Type SM
See Sheet 2 of 6 for details.

NOTES

- See Sheet 5 of 6 for details of Rail Anchorage into Precast Section D-D.
- After beams have been erected, holes shall be drilled into substructure and dowel rods placed. Dowel holes shall be filled with non-shrink grout to top of beam and allowed to cure min. 24 hrs. prior to grouting the shear keys.
- See sheet 5 of 6 for fabric bearing pad details.
- Concrete wearing surface to be poured after grouting the shearkeys.
- Dowel rods drilled in abutment and grout are included in the cost of Precast Prestressed Concrete Deck Beams (21" Depth).
- Work this Sheet with Sheet 3 of 6.
- Reinforcement bars designated (E) shall be epoxy coated.



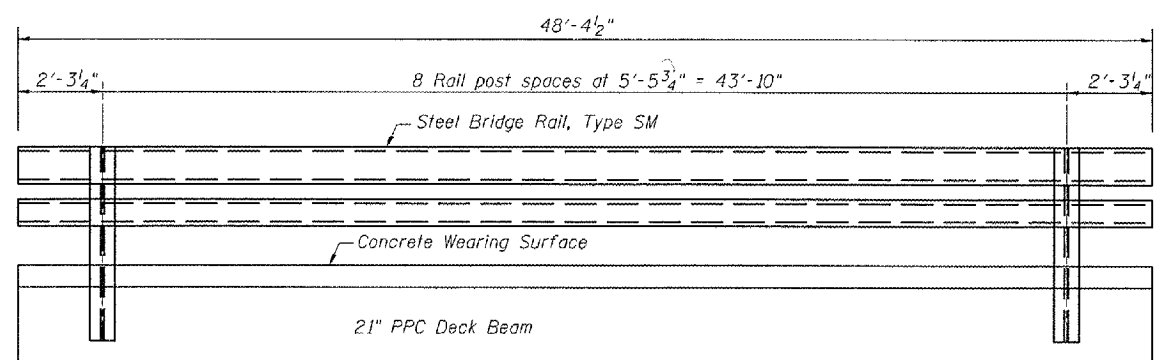
REINFORCED CONCRETE WEARING SURFACE PROFILE



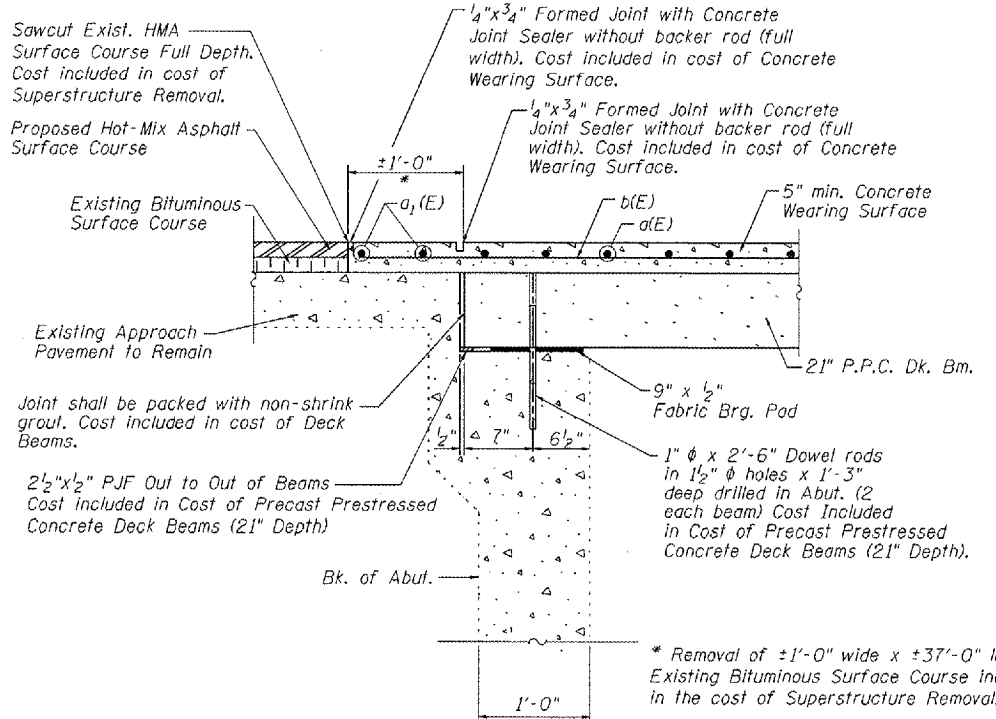
BAR a(E)

SUPERSTRUCTURE BILL OF MATERIAL

BAR NO.	NO.	SIZE	LENGTH	SHAPE	
a(E)	49	#4	37'-5"	—	
a1(E)	4	#4	36'-5"	—	
b(E)	66	#4	25'-10"	—	
Reinforcement Bars, Epoxy Coated				Pound	2460
Concrete Wearing Surface				Sq. Yd.	179
Bridge Deck Grooving				Sq. Yd.	167

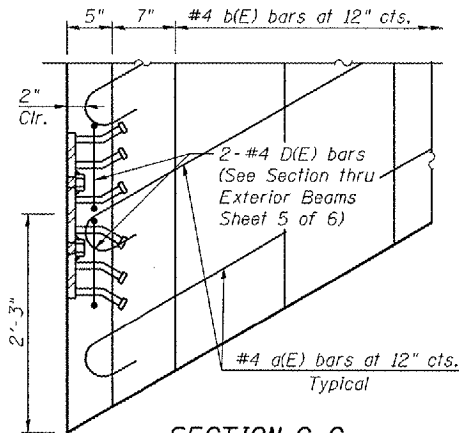


RAIL POST SPACING



SECTION A-A TYP. SECTION THRU ABUTMENT
(at Rt. L.S.)

* Removal of ±1'-0" wide x ±37'-0" long Existing Bituminous Surface Course included in the cost of Superstructure Removal.



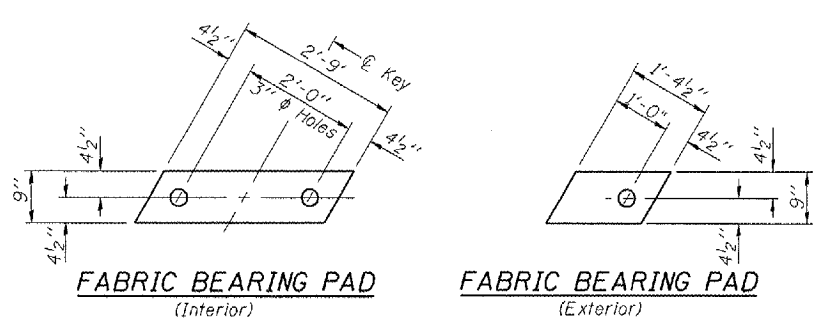
SECTION C-C

ILLINOIS DEPARTMENT OF TRANSPORTATION
SUPERSTRUCTURE DETAILS
IL ROUTE 32 OVER JONATHAN BRANCH
F.A.P. ROUTE 75B SECTION 3BR-1
MOULTRIE COUNTY
STATION 68+26.50
STRUCTURE NO. 070-0033

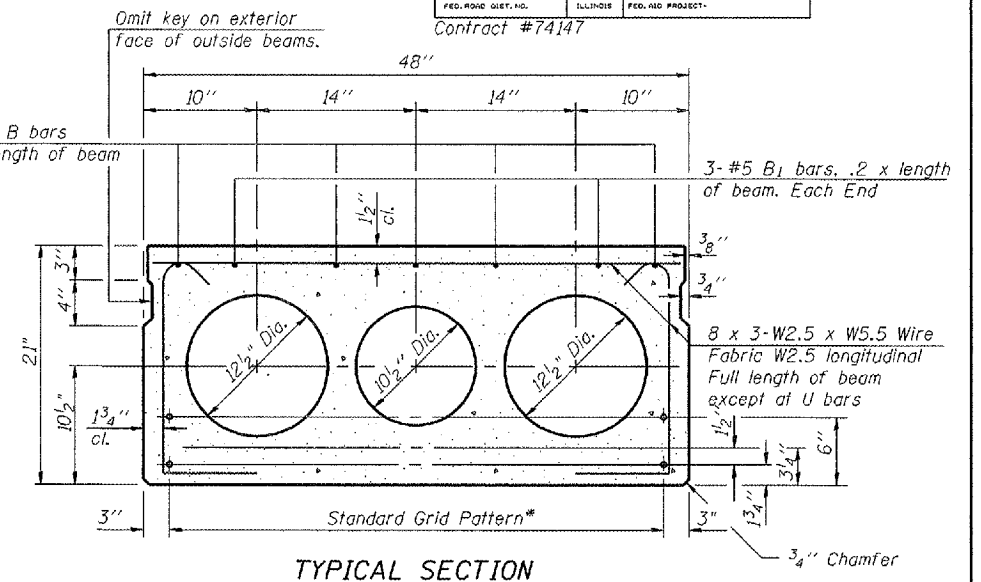
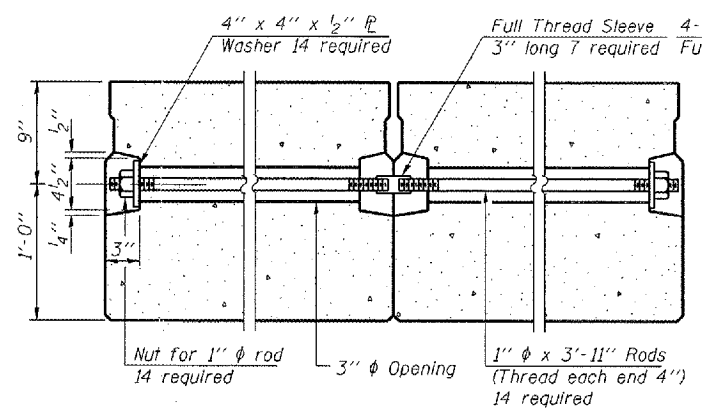
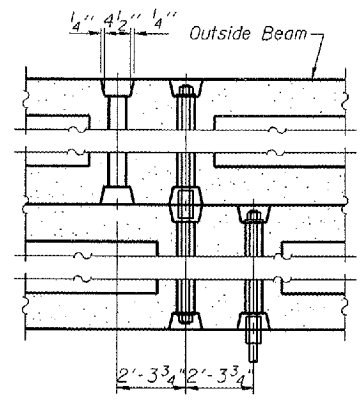
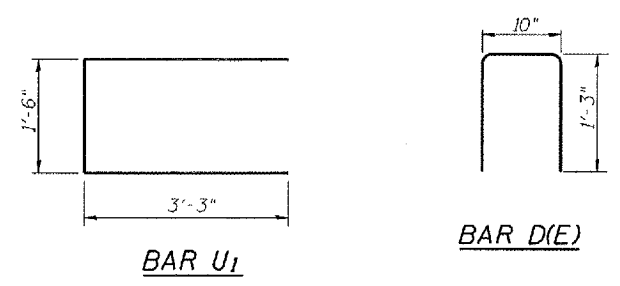
DATE: MARCH 2006

DRAWN BY: MLD
CHECKED BY: PBB

...BridgeSuper-Structure.dgn 11/29/2006 10:04:13 AM moakley

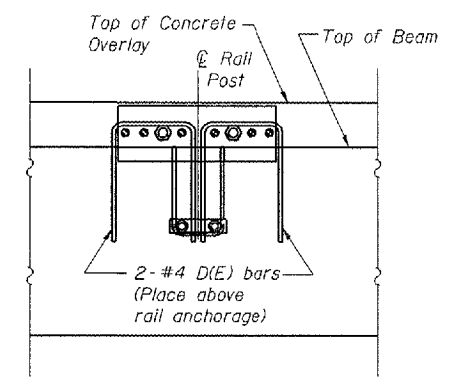
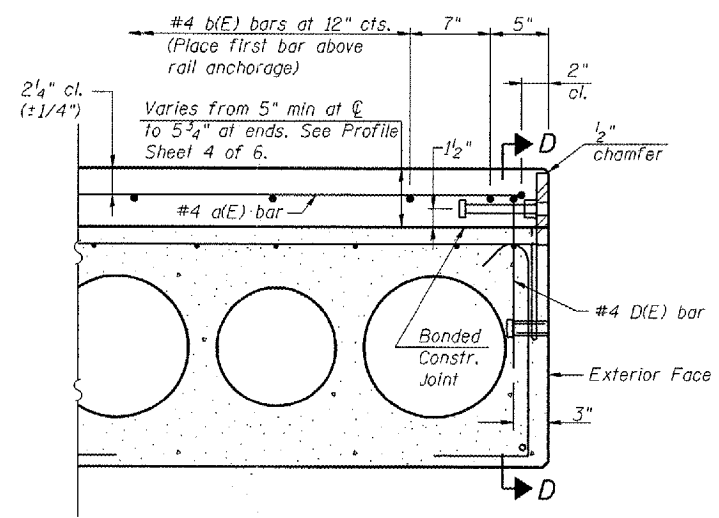
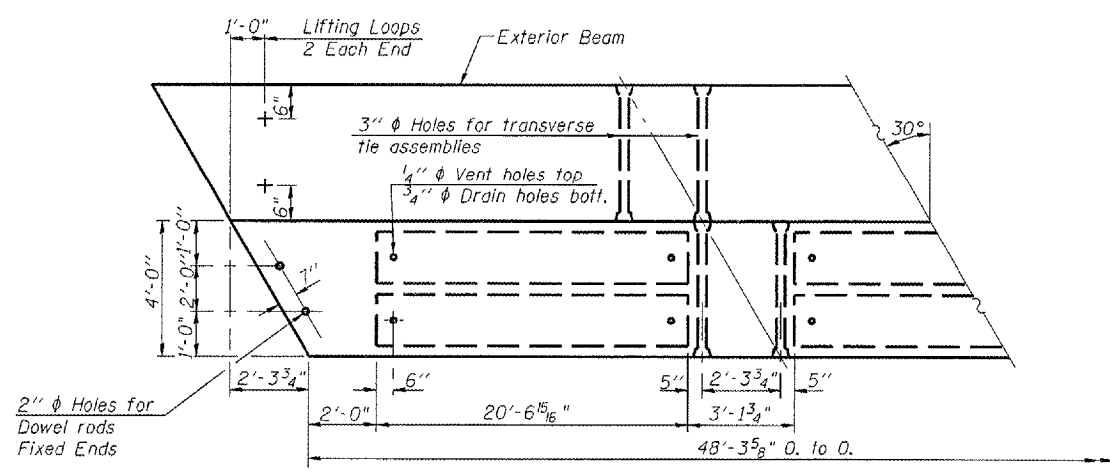


FIXED



***TRANSVERSE STRAND PLACEMENT GUIDELINES**

1. Place strands symmetrically about centerline of beam.
2. The minimum distance from center to center of strands in all directions shall be 2".
3. The minimum clearance from strand to dowel hole shall be 1/2".
4. The minimum clearance from strand to void shall be 1/2".



NOTES

Prestressing steel shall be uncoated high strength, low relaxation 7-wire strand, Grade 270. The nominal diameter shall be 1/2" and the nominal cross-sectional area shall be 0.153 sq. in. Lifting loops shall be 2-1/2" φ-270 ksi strands, as shown.

The 1" φ rods in the transverse tie assembly shall be tightened to a snug fit and the threads set. Pockets that receive transverse tie bar on outside shall be filled with grout after transverse tie assembly is in place.

Non-prestressing steel shall conform to ASTM A-706 (IL Mod), Grade 60.

The bearing seat surfaces shall be adjusted by shimming to assure firm and even bearing. Two 1/8" fabric adjusting shims of the dimensions of the Exterior Bearing Pad shall be provided for each bearing. (Cost included in precast prestressed concrete deck beams.)

Keyway surfaces shall be cleaned to remove form oil or other bond breaking material prior to shipment of the beams. Cleaning shall be done by sandblasting the keyway areas between top of the beam and the bottom edge of the key.

Corrosion Inhibitor, according to Articles 1020.05(b)(12) and 1021.06 of the Standard Specifications, shall be used in the concrete for precast prestressed concrete deck beams.

Required Release Strength, f'ci, shall be 4,000 p.s.i.

See Sheets 2 and 4 of 6 for location of rail inserts.

Bridge rail inserts and D(E) bars shall be cast in precast beams.

The rail anchorage shall be cast with the beam and the wearing surface shall be cast in the field. Formwork necessary for the wearing surface may be secured utilizing the bottom rail anchorage inserts and/or additional inserts cast into the beam. Drilling into the beam will not be permitted.

BILL OF MATERIAL

Precast Prestressed Conc. Deck Bms.(21" Depth)	Sq. Ft.	1546
--	---------	------

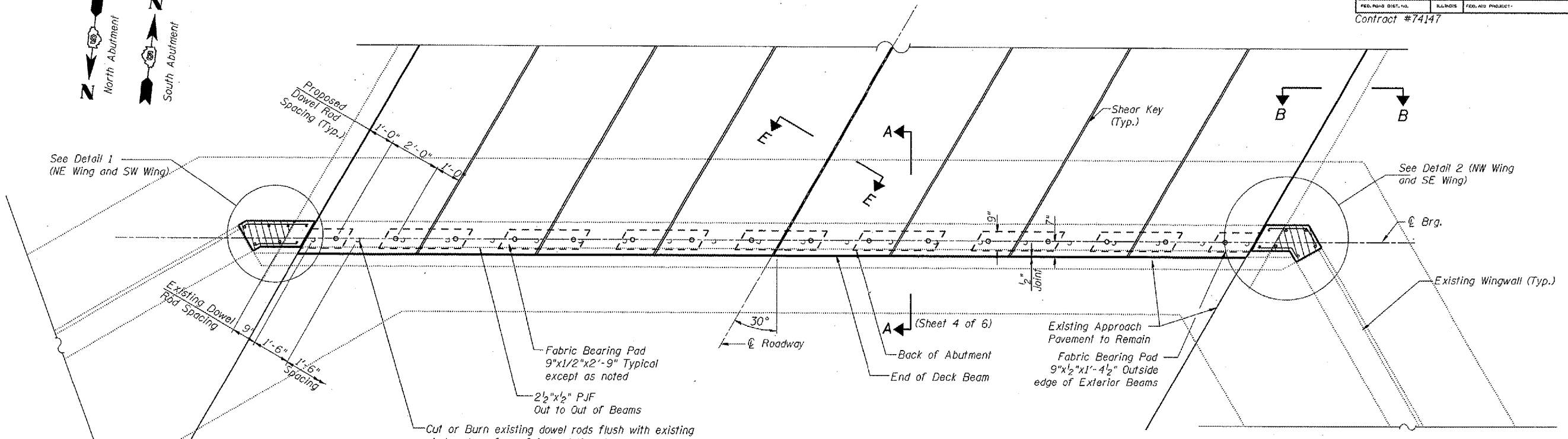
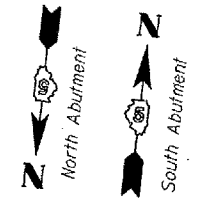
ILLINOIS DEPARTMENT OF TRANSPORTATION

SUPERSTRUCTURE DETAILS

IL ROUTE 32 OVER JONATHAN BRANCH F.A.P. ROUTE 758 SECTION 3BR-1 MOULTRIE COUNTY STATION 68+26.50 STRUCTURE NO. 070-0033

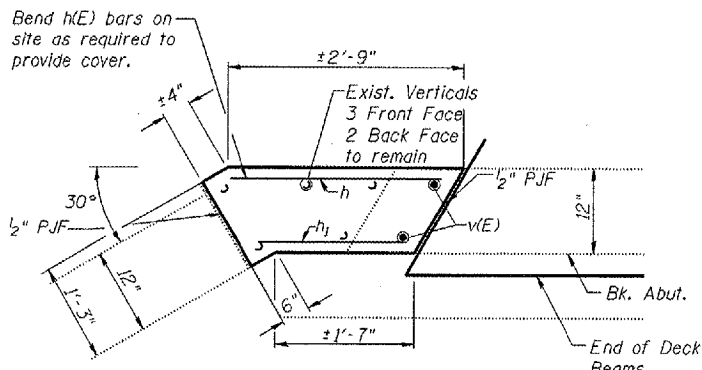
DATE: MARCH 2006

DRAWN BY: MLO
CHECKED BY: PBB



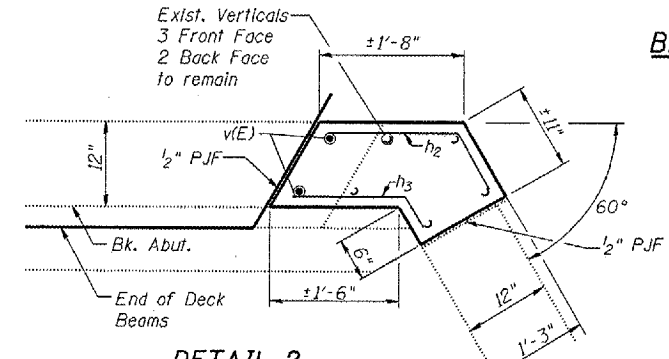
PLAN

(Wearing Surface not shown)



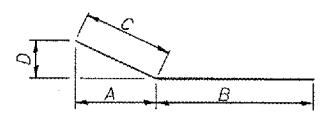
DETAIL 1

At NE Wingwall
At SW Wingwall



DETAIL 2

At NW Wingwall
At SE Wingwall



h BARS

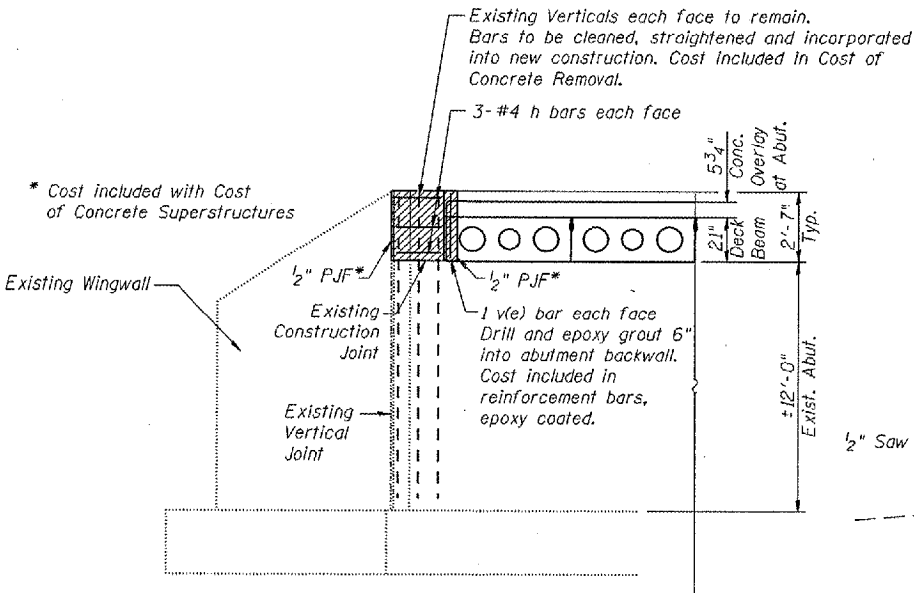
BAR	A	B	C	D
h ₂ (E)	4 3/8"	1'-6"	9"	7 7/8"
h ₃ (E)	2 1/2"	1'-4"	5"	4 3/8"

BILL OF MATERIAL (BOTH ABUT'S)

BAR	NO.	SIZE	LENGTH	SHAPE	
v(E)	6	#4	2'-7"	—	
h ₁ (E)	6	#4	1'-8"	—	
h ₂ (E)	6	#4	2'-3"	—	
h ₃ (E)	6	#4	1'-9"	—	
v(E)	8	#4	3'-0"	—	
Reinforcement Bars, Epoxy Coated				Pound	50
Concrete Removal				Cu. Yd.	0.8
Concrete Structures				Cu. Yd.	1.0

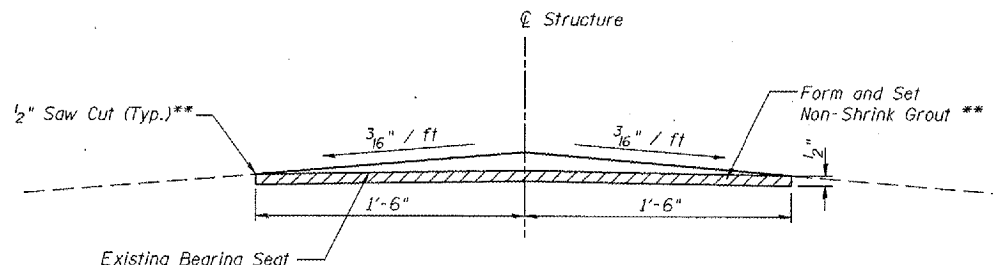
NOTES

Hatched areas indicate concrete removal. These areas are to be poured after concrete wearing surface is in place and cured.
Reinforcement bars designated (E) shall be epoxy coated.
See sheet 4 of 6 for Section A-A.



SECTION B-B

TYPICAL ELEVATION AT HATCHED AREA



SECTION E-E

BEAM SEAT ADJUSTMENT

** Cost included with Precast Prestressed Concrete Deck Beams

ILLINOIS DEPARTMENT OF TRANSPORTATION

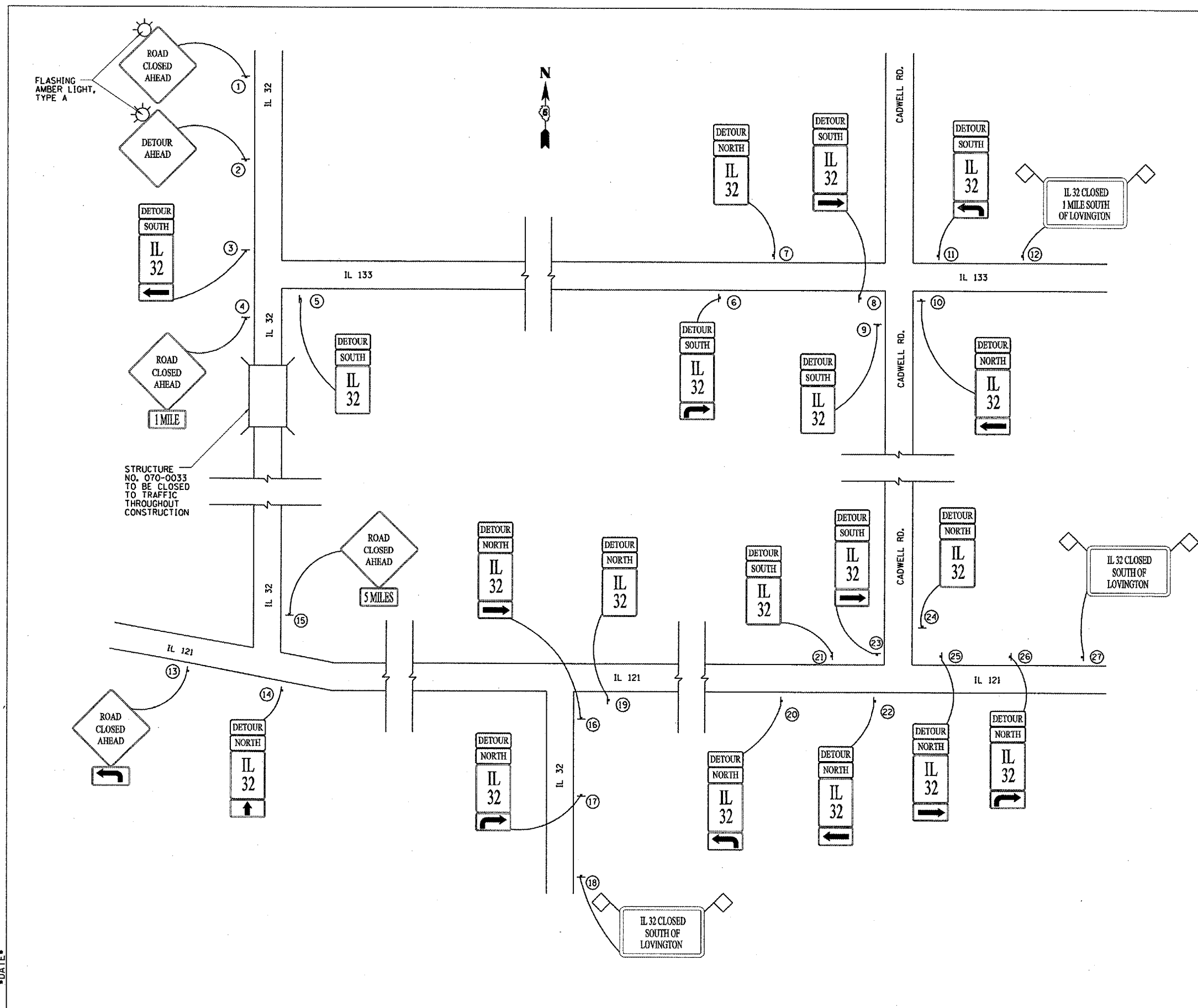
ABUTMENTS

IL ROUTE 32 OVER
JONATHAN BRANCH
F.A.P. ROUTE 758 SECTION 3BR-1
MOULTRIE COUNTY
STATION 68+26.50
STRUCTURE NO. 070-0033

DATE: MARCH 2006

DRAWN BY: MLO
CHECKED BY: PBB

F.A.P. RTE.	SECTION	COUNTY	TOTAL SHEETS	SHEET NO.
758	3BR-1	MOULTRIE	24	14
FED. ROAD DIST. NO.		ILLINOIS FED. AID PROJECT		



- SIGN NO. LOCATION**
1. ERECT 75'± NORTH OF W. ADDISON ST. IN LOVINGTON
 2. ERECT 50'± SOUTH OF STOP AHEAD SIGN
 3. ERECT 50'± NORTH OF STOP SIGN
 4. ERECT BEHIND STOP SIGN
 5. ERECT BESIDE EAST IL 133 SIGN
 6. ERECT BESIDE CADWELL 2 ARROW SIGN
 7. ERECT BESIDE WEST IL 133 SIGN
 8. ERECT 200'± WEST OF CADWELL ROAD
 9. ERECT BESIDE ADOPT A HIGHWAY SIGN
 10. ERECT BESIDE IL 133 SIGN
 11. ERECT 300'± EAST OF CADWELL ROAD
 12. ERECT BESIDE CROSSROAD CADWELL ROAD SIGN
 13. ERECT BESIDE JCT IL 32 SIGNS
 14. ERECT BESIDE IL 32 LEFT ARROW AND IL 121 UP ARROW SIGNS
 15. ERECT BESIDE NORTH IL 32 SIGN
 16. ERECT BESIDE LINCOLN HERITAGE TRAIL SIGN
 17. ERECT JUST SOUTH OF MONROE ST.
 18. ERECT JUST NORTH OF FIRE STATION
 19. ERECT BESIDE WOOD POWER POLE BY MCDONALDS SIGN
 20. ERECT BESIDE SIDEROAD CADWELL ROAD SIGN
 21. ERECT BESIDE WEST IL 121 SIGN
 22. ERECT BESIDE CADWELL ARTHUR ARROW SIGN
 23. ERECT JUST SOUTH OF MATTOON, SULLIVAN ARROW SIGN
 24. ERECT 100'± NORTH OF IL 121
 25. ERECT 50'± WEST OF CADWELL, ARTHUR SIGN
 26. ERECT BETWEEN SIDEROAD AND TOURIST ACTIVITIES SIGNS
 27. ERECT BESIDE DIVIDED HIGHWAY SIGN

- LOCATION**
1. EXISTING SIGNS WHICH CONFLICT WITH THE MARKED DETOUR SHALL BE COVERED. ALL SIGN LOCATIONS MAY BE ADJUSTED DUE TO FIELD CONDITIONS
 2. SEE SPECIAL PROVISION "TRAFFIC CONTROL AND PROTECTION (SPECIAL)" FOR MORE DETAILS.

REVISIONS		ILLINOIS DEPARTMENT OF TRANSPORTATION
NAME	DATE	
		DETOUR SIGNING DETAIL SCALE: NONE DATE: 3/05 DRAWN BY RJC CHECKED BY PBB

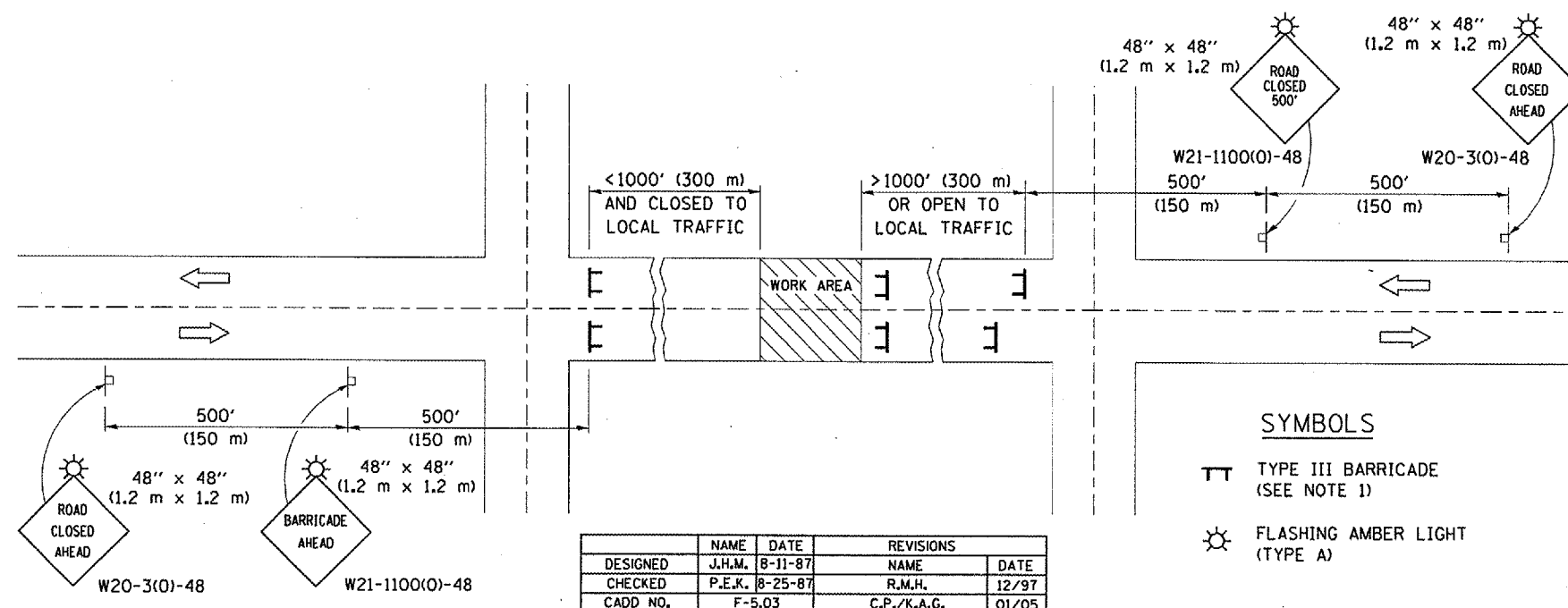
c:\projects\505203\10-13-06\detalls.dgn DATE

F.A.P. RTE.	SECTION	COUNTY	TOTAL SHEETS	SHEET NO.
758	3BR-1	MOULTRIE	24	15
STA.		TO STA.		
FED. ROAD DIST. NO.		ILLINOIS FED. AID PROJECT		

TYPICAL APPLICATION OF TRAFFIC CONTROL DEVICES FOR ROAD CLOSURE

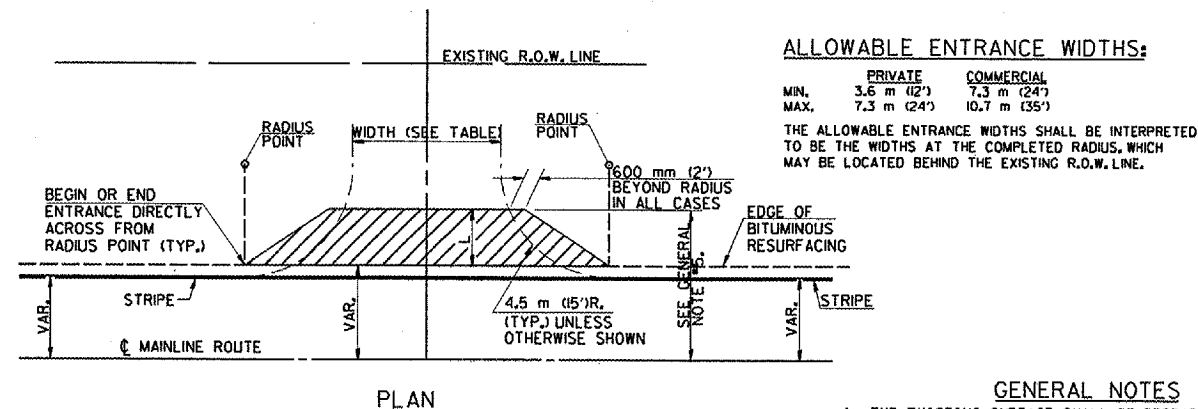
GENERAL NOTES

- TYPE III BARRICADES SHALL BE AS SHOWN ON STANDARD 702001 "TYPICAL APPLICATIONS OF TYPE III BARRICADES CLOSING A ROAD". EACH TYPE III BARRICADE SHALL HAVE TWO FLASHING AMBER LIGHTS MOUNTED ABOVE IT.
- IF THE ROAD IS OPEN TO LOCAL TRAFFIC OR EXCEEDS 1000' (300 m), ANOTHER SET OF TYPE III BARRICADES, EQUIPPED AS IN NOTE 1 ABOVE, SHALL BE PLACED AT EACH END OF THE WORK AREA.
- WHEN A STOP CONDITION EXISTS, NO SIGNS ARE REQUIRED IN ADVANCE OF THE "STOP" SIGN WHEN THE ROAD IS CLOSED WITHIN 100' (30 m) OF THE INTERSECTION.
- STANDARD 702001 SHALL APPLY FOR THE PLACEMENT & DESIGN OF TYPE III BARRICADES.
- IF A TYPE III BARRICADE WITH AN ATTACHED SIGN PANEL WHICH MEETS NCHRP 350 IS NOT AVAILABLE, THE SIGNS MAY BE MOUNTED ON AN NCHRP 350 TEMPORARY SIGN SUPPORT DIRECTLY IN FRONT OF THE BARRICADE.
- REFLECTORIZED STRIPING SHALL APPEAR ON BOTH SIDES OF THE TYPE III BARRICADES IF ROAD IS OPEN TO LOCAL TRAFFIC.
- ALL SIGNS SHALL BE POST MOUNTED IF THE CLOSURE TIME EXCEEDS FOUR DAYS.
- A MINIMUM OF TWO FLASHING LIGHTS SHALL BE USED AT NIGHT ON EACH APPROACH IN ADVANCE OF THE WORK AREA. FLASHING LIGHTS SHALL BE INSTALLED ABOVE THE FIRST TWO SIGNS IN THE SERIES.
- LONGITUDINAL DIMENSIONS MAY BE ADJUSTED SLIGHTLY TO FIT FIELD CONDITIONS.
- FORMS BT, 725 AND BT, 726 ARE REQUIRED.
- WHEN A SIDEROAD INTERSECTS THE HIGHWAY ON WHICH WORK IS BEING PERFORMED, ADDITIONAL TRAFFIC DEVICES SHALL BE ERECTED AND PROVIDED AS DIRECTED BY THE ENGINEER.
- AN ADDITIONAL SIGN MAY BE REQUIRED AT A MAJOR INTERSECTING ROAD IN ADVANCE OF THE CLOSURE. THE ADDITIONAL SIGN SHALL GIVE THE DISTANCE TO THE BARRICADE IN MILES OR FRACTIONS OF A MILE.



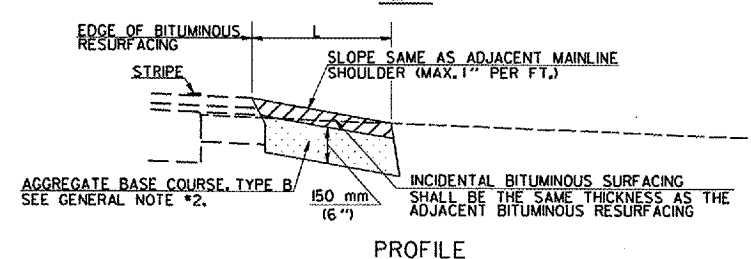
ALL DIMENSIONS ARE IN INCHES (MILLIMETERS) UNLESS OTHERWISE SHOWN.

TYPICAL DETAIL OF RURAL PRIVATE AND COMMERCIAL ENTRANCES



GENERAL NOTES

- THE EXISTING SURFACE SHALL BE PREPARED IN ACCORDANCE WITH SECTION 408 OF THE STANDARD SPECIFICATIONS.
- AGGREGATE BASE COURSE, TYPE B OF THE THICKNESS SPECIFIED IN THE PLANS 150 mm (6") MIN. SHALL BE USED WHERE IN THE OPINION OF THE ENGINEER THERE IS NOT SUFFICIENT BASE MATERIAL FOR THE PROPOSED ENTRANCES. THIS MATERIAL SHALL GENERALLY BE USED TO WIDEN ANY EXISTING RETURN OR TO CONSTRUCT NEW ENTRANCES WHERE NONE NOW EXISTS.
- THE AGGREGATE BASE COURSE SHALL BE CONSTRUCTED 0.3 m (1') WIDER THAN THE SURFACE DIMENSIONS AS SHOWN ABOVE.
- ANY NECESSARY WORK BEHIND THE INCIDENTAL BITUMINOUS SURFACING SHALL BE AS SHOWN IN THE PLANS AND/OR AS DIRECTED BY THE ENGINEER.
- THIS DISTANCE SHALL BE FROM THE CENTERLINE TO THE EXISTING (OR PROPOSED) P. I. OF SHOULDER UNLESS OTHERWISE SHOWN IN THE PLANS.

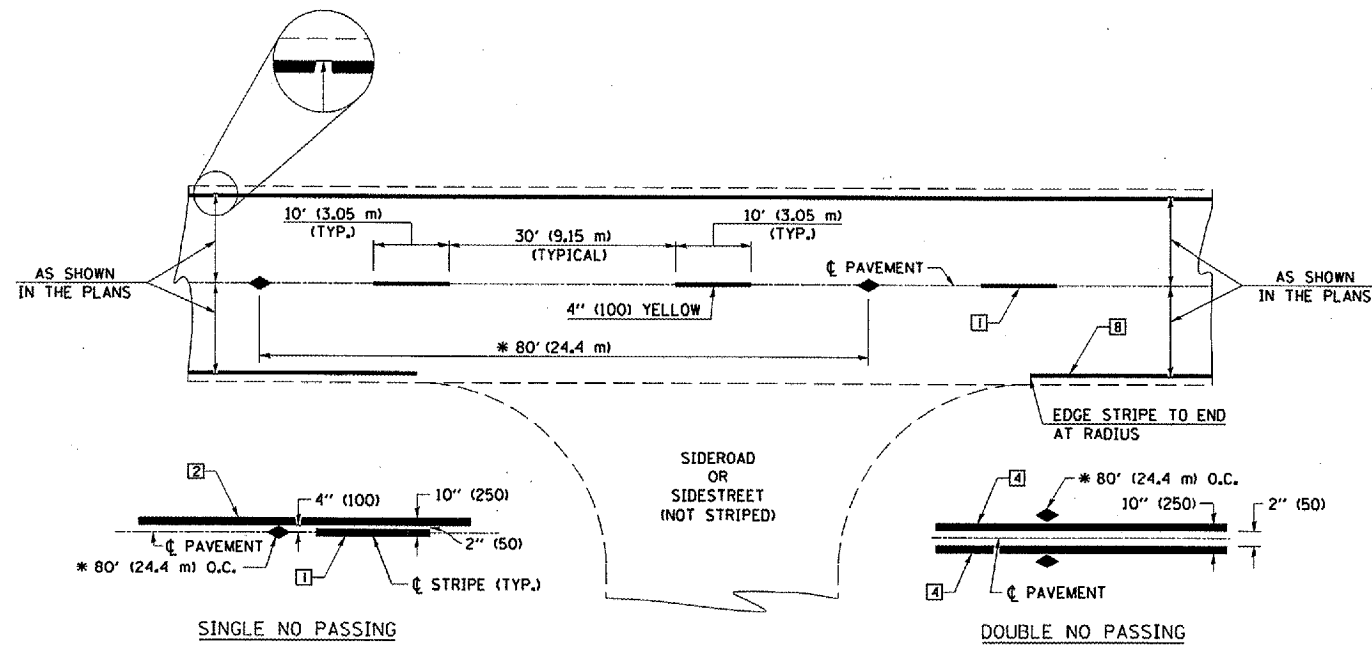


REVISIONS		ILLINOIS DEPARTMENT OF TRANSPORTATION
NAME	DATE	
		<p>ROADWAY DETAILS</p> <p>DATE: 03/06</p> <p>DRAWN BY: RJC</p> <p>CHECKED BY: PBB</p>

PLT DATE: 10/19/2006
 PLOT SCALE: 1/8" = 1'-0"
 USER: JRC

F.A.P. RTE.	SECTION	COUNTY	TOTAL SHEETS	SHEET NO.
758	3BR-1	MOULTRIE	24	16
FED. ROAD DIST. NO.		ILLINOIS FED. AID PROJECT		

TYPICAL APPLICATIONS OF PAVEMENT MARKINGS AND MARKERS



* REDUCE TO 40' (12.2 m) O.C. ON CURVES WITH POSTED OR ADVISORY SPEEDS OF 45 mph (70 km/h) OR LESS.

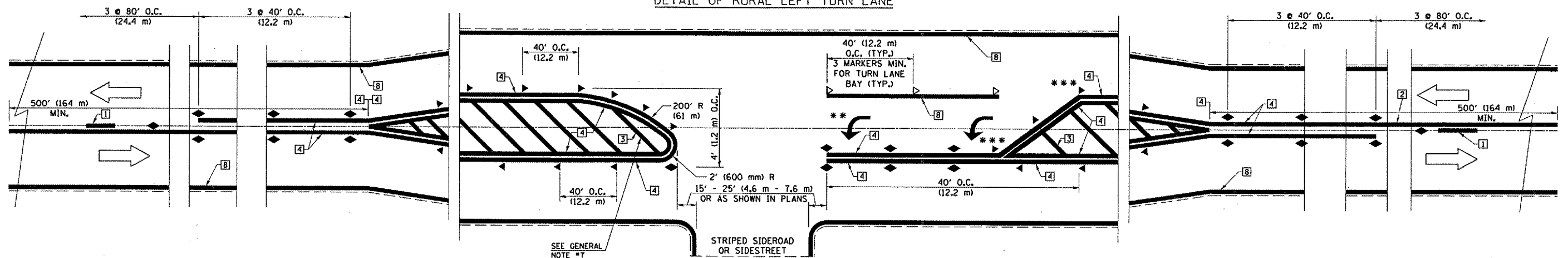
TYPICAL PAVEMENT MARKING LEGEND

- 1 4" (100) SKIP-DASH (YELLOW)
- 2 4" (100) SOLID (YELLOW)
- 3 12" (300) DIAGONAL (YELLOW)
- 4 4" (100) DOUBLE YELLOW (NARROW)
- 5 RESERVED
- 6 RESERVED
- 7 4" (100) SKIP-DASH (WHITE)
- 8 4" (100) SOLID (WHITE)
- 9 12" (300) DIAGONAL (WHITE)
- 10 6" (150) CROSS WALK (WHITE)
- 11 24" (600) STOP BAR (WHITE)
- 12 8" (200) SOLID (WHITE)
- 13 4" (100) LANE LINE EXTENSIONS (WHITE)
- 14 4" (100) PARKING WHITE

TYPICAL PAVEMENT MARKERS LEGEND

- ◆ TWO-WAY AMBER MARKER
- ▶ ONE-WAY AMBER MARKER
- ▷ ONE-WAY CRYSTAL MARKER

DETAIL OF RURAL LEFT TURN LANE



*** REDUCE SPACING IF NECESSARY TO ASSURE MARKERS AT CORNER POINTS.

** TURN ARROWS SHALL BE PLACED AS SHOWN ON SHEET #2.

SHEET 1 OF 3

DESIGNED	NAME	DATE	REVISIONS
J.M.H.		5/85	
CHECKED	FMS	6/85	
CADD NO.	F-5,25		

ALL DIMENSIONS ARE IN INCHES (MILLIMETERS) UNLESS OTHERWISE SHOWN.

REVISIONS	
NAME	DATE

ILLINOIS DEPARTMENT OF TRANSPORTATION

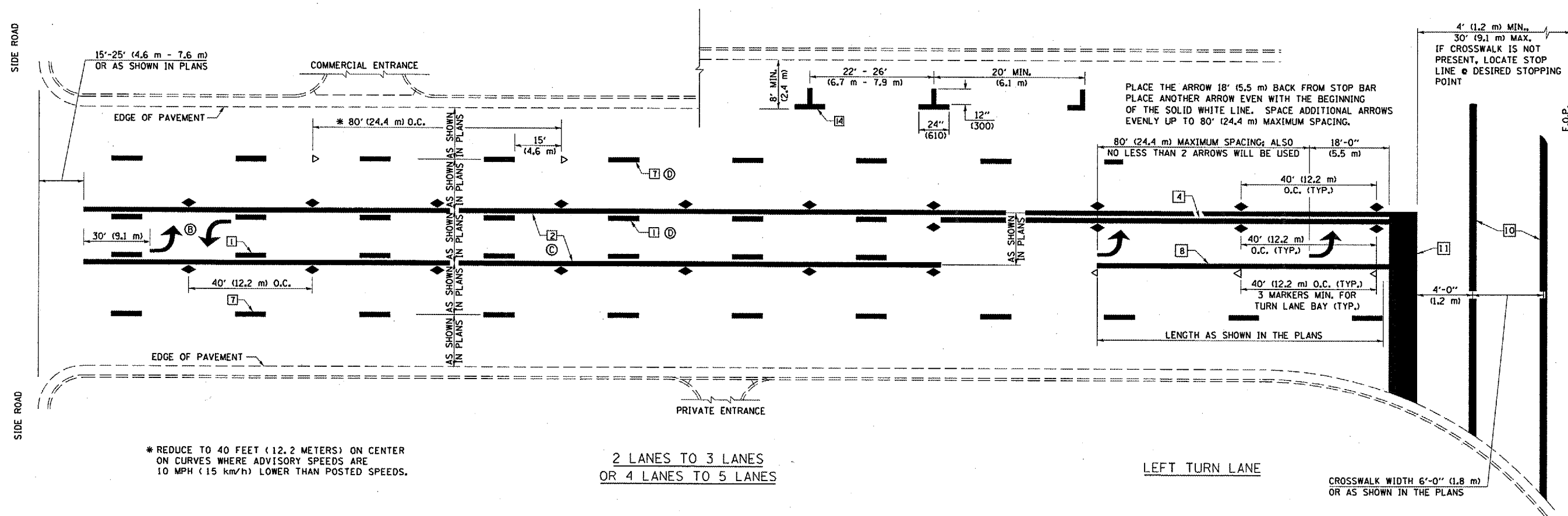
TYPICAL APPLICATION OF PAVEMENT MARKINGS SHEET 1 OF 3

SCALE: NONE
DATE: 3/06

DRAWN BY DIST. 5
CHECKED BY DIST. 5

F.A.P. RTE.	SECTION	COUNTY	TOTAL SHEETS	SHEET NO.
758	3BR-1	MOULTRIE	24	17
FED. ROAD DIST. NO.		ILLINOIS FED. AID PROJECT		

TYPICAL APPLICATIONS OF PAVEMENT MARKINGS AND MARKERS



* REDUCE TO 40 FEET (12.2 METERS) ON CENTER ON CURVES WHERE ADVISORY SPEEDS ARE 10 MPH (15 km/h) LOWER THAN POSTED SPEEDS.

2 LANES TO 3 LANES
OR 4 LANES TO 5 LANES

LEFT TURN LANE

CROSSWALK WIDTH 6'-0" (1.8 m)
OR AS SHOWN IN THE PLANS

c:\projects\101306\details.dgn

SHEET 2 OF 3

DESIGNED	NAME	DATE	REVISIONS	NAME	DATE
J.M.H.	J.M.H.	5/85			
FMS	FMS	6/88			
CTD	CTD	6/88			
F-5.25	F-5.25	6/88			
CADD NO.	K.A.G.	07/02			
	K.A.G.	09/05			

ALL DIMENSIONS ARE IN INCHES (MILLIMETERS) UNLESS OTHERWISE SHOWN.

REVISIONS	
NAME	DATE

ILLINOIS DEPARTMENT OF TRANSPORTATION

TYPICAL APPLICATION OF PAVEMENT MARKINGS

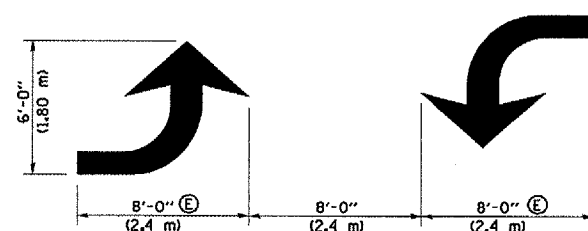
SHEET 2 OF 3

SCALE: NONE
DATE 3/06

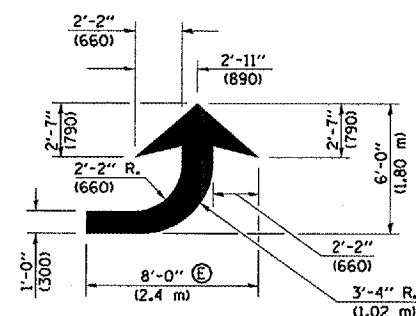
DRAWN BY DIST. 5
CHECKED BY DIST. 5

F.A.P. RTE.	SECTION	COUNTY	TOTAL SHEETS	SHEET NO.
758	3BR-1	MOULTRIE	24	18
FED. ROAD DIST. NO.		ILLINOIS FED. AID PROJECT		

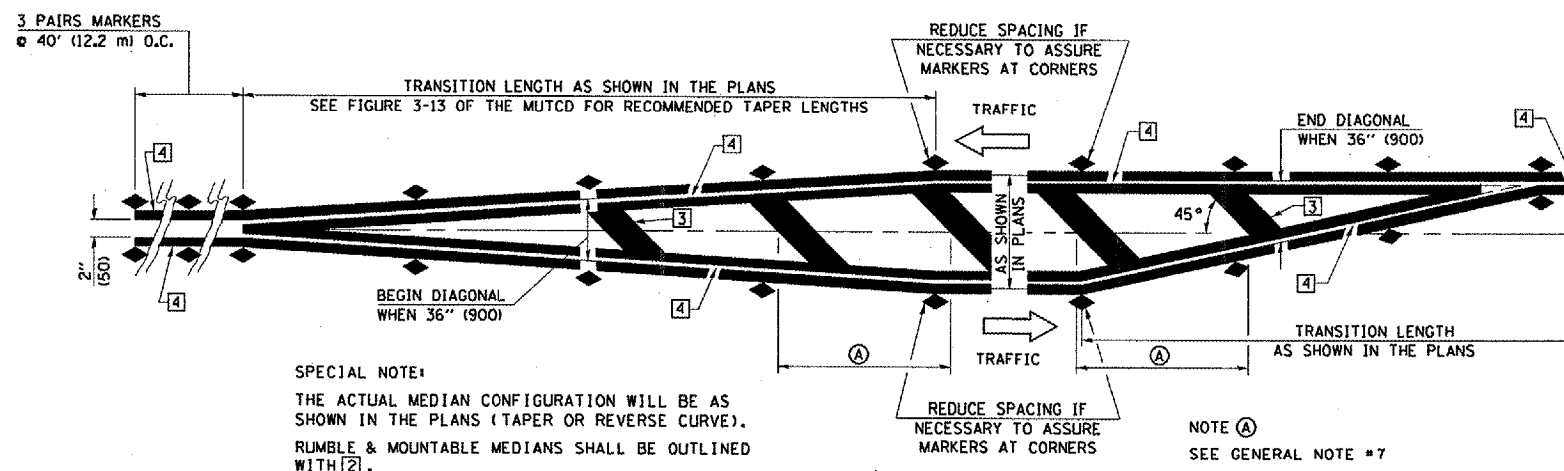
TYPICAL APPLICATIONS OF PAVEMENT MARKINGS AND MARKERS



TYPICAL DOUBLE TURN ARROWS (WHITE)



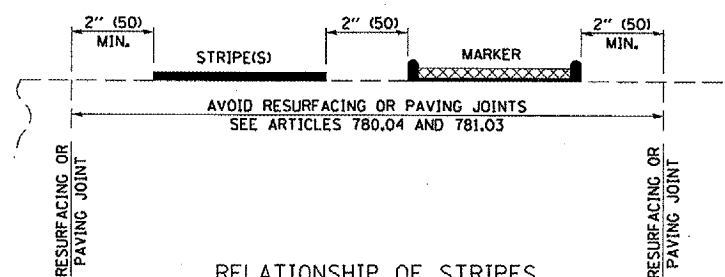
LEFT ARROW
REVERSE FOR RIGHT ARROW
AREA = 15.6 SQ. FT. (1.47 m²)
(WHITE)



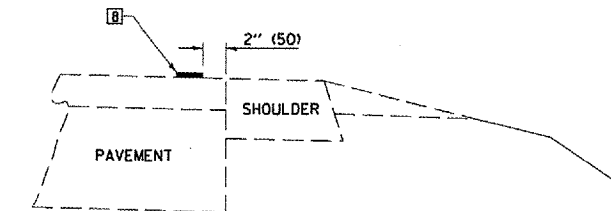
SPECIAL NOTE:
THE ACTUAL MEDIAN CONFIGURATION WILL BE AS SHOWN IN THE PLANS (TAPER OR REVERSE CURVE).
RUMBLE & MOUNTABLE MEDIANS SHALL BE OUTLINED WITH [2].

NOTE (A)
SEE GENERAL NOTE #7

TYPICAL MEDIAN TRANSITIONS



RELATIONSHIP OF STRIPES, MARKERS AND JOINTS



RELATIONSHIP OF EDGE STRIPE TO SAFETY SHOULDER OR PAVED SURFACE

SPECIAL NOTES:

- (B) TURN ARROW PAIRS SHALL BE PLACED AT 250' (75 m) INTERVALS AND SHALL BE EVENLY SPACED BETWEEN BOTH ENDS OF THE BIDIRECTIONAL LEFT TURN LANE.
- (C) THE SOLID YELLOW PAVEMENT MARKINGS [2] SHOULD GENERALLY START OR END NEAR THE RADIUS POINT OF EACH STREET RETURN EXCEPT WHERE ONE OR BOTH ENDS WOULD INCLUDE STOP BARS.
- (D) THE SKIP-DASH PAVEMENT MARKINGS [1] OR [7] SHOULD BE CENTERED BETWEEN BOTH ENDS OF EACH CITY BLOCK AND SHALL BE PLACED SO THEY LINE UP ACROSS FROM EACH OTHER. SEE EXAMPLE ON SHEET 2 OF 3.
- (E) TURN ARROW SIZE DEPENDS ON THE LOCATION.
RURAL LOCATION - LARGE ARROW SIZE
URBAN LOCATION - SMALL ARROW SIZE

GENERAL NOTES

- 1. WHEN MEDIANS ARE PRESENT, PAVEMENT MARKINGS ARE TO BE PLACED ADJACENT TO MEDIANS.
- 2. SCALE: NONE
- 3. SOME OF THE INFORMATION INCLUDED WITH THIS DETAIL MAY NOT BE APPLICABLE TO THIS IMPROVEMENT.
- 4. PAVEMENT MARKINGS ARE TO BE EXTENDED THROUGH OMISSIONS WHEN APPLICABLE.
- 5. A STRIPING KEY IS AVAILABLE ELSEWHERE AND SHALL BE SHOWN WHERE THE QUANTITIES ARE LISTED.
- 6. FINAL PAVEMENT MARKINGS SHALL BE IN PLACE PRIOR TO PLACING ANY RAISED REFLECTIVE PAVEMENT MARKERS.
- 7. THE FOLLOWING CRITERIA SHALL BE USED FOR SELECTING THE DIAGONAL PAVEMENT MARKING SPACING,
< 30 MPH USE 15' (< 50 km/h USE 4.5 m)
30-45 MPH USE 20' (50-75 km/h USE 6.0 m)
> 45 MPH USE 30' (> 75 km/h USE 9.0 m)

REVISIONS	
NAME	DATE

ILLINOIS DEPARTMENT OF TRANSPORTATION

TYPICAL APPLICATION OF PAVEMENT MARKINGS SHEET 3 OF 3

SCALE: NONE
DATE 3/06

DRAWN BY DIST. 5
CHECKED BY DIST. 5

c:\projects\8505203 (v8)\submit 10_13_06\detailed.dgn

SHEET 3 OF 3

NAME	DATE	REVISIONS
DESIGNED J.M.H.	5/05	
CHECKED FMS	6/05	
CADD NO. F-5.25	6/05	

ALL DIMENSIONS ARE IN INCHES (MILLIMETERS) UNLESS OTHERWISE SHOWN.

CONTRACT NO. 74147				
F.A.P. RTE.	SECTION	COUNTY	TOTAL SHEETS	SHEET NO.
758	3BR-1	MOULTRIE	24	19
STA. 66+00.00		TO STA. 66+92.30		
FED. ROAD DIST. NO.	ILLINOIS	FED. AID PROJECT		

DATE	BY

NO.	AREA CHECKED

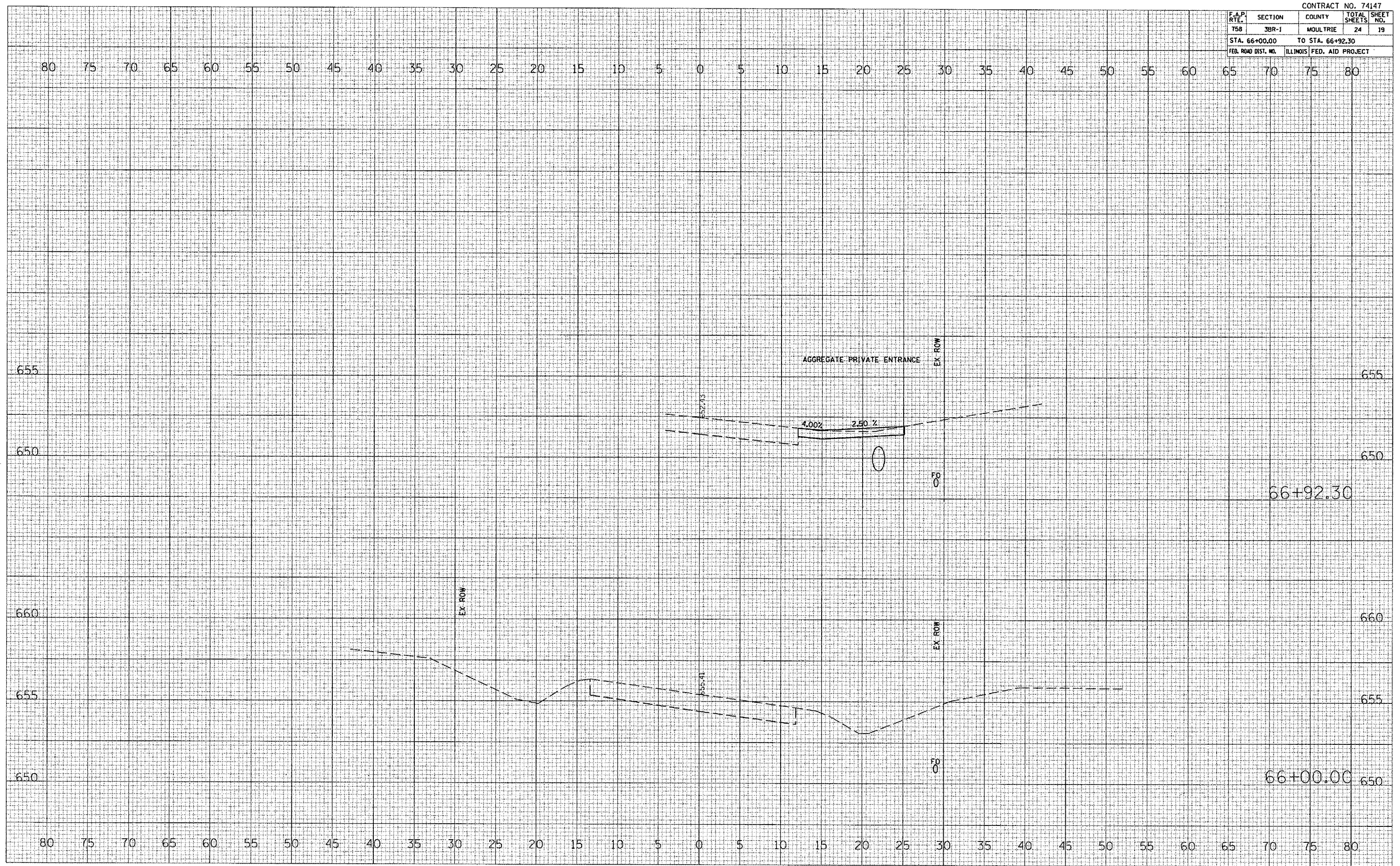
NO.	AREAS CHECKED

DATE	BY

NO.	AREAS CHECKED

NO.	AREAS CHECKED

PLOT DATE = 10/20/2006
 FILE NAME = c:\p\c\11111111\11111111.dwg
 PLOT SCALE = 10.0000 / IN.
 USER NAME = 11111111

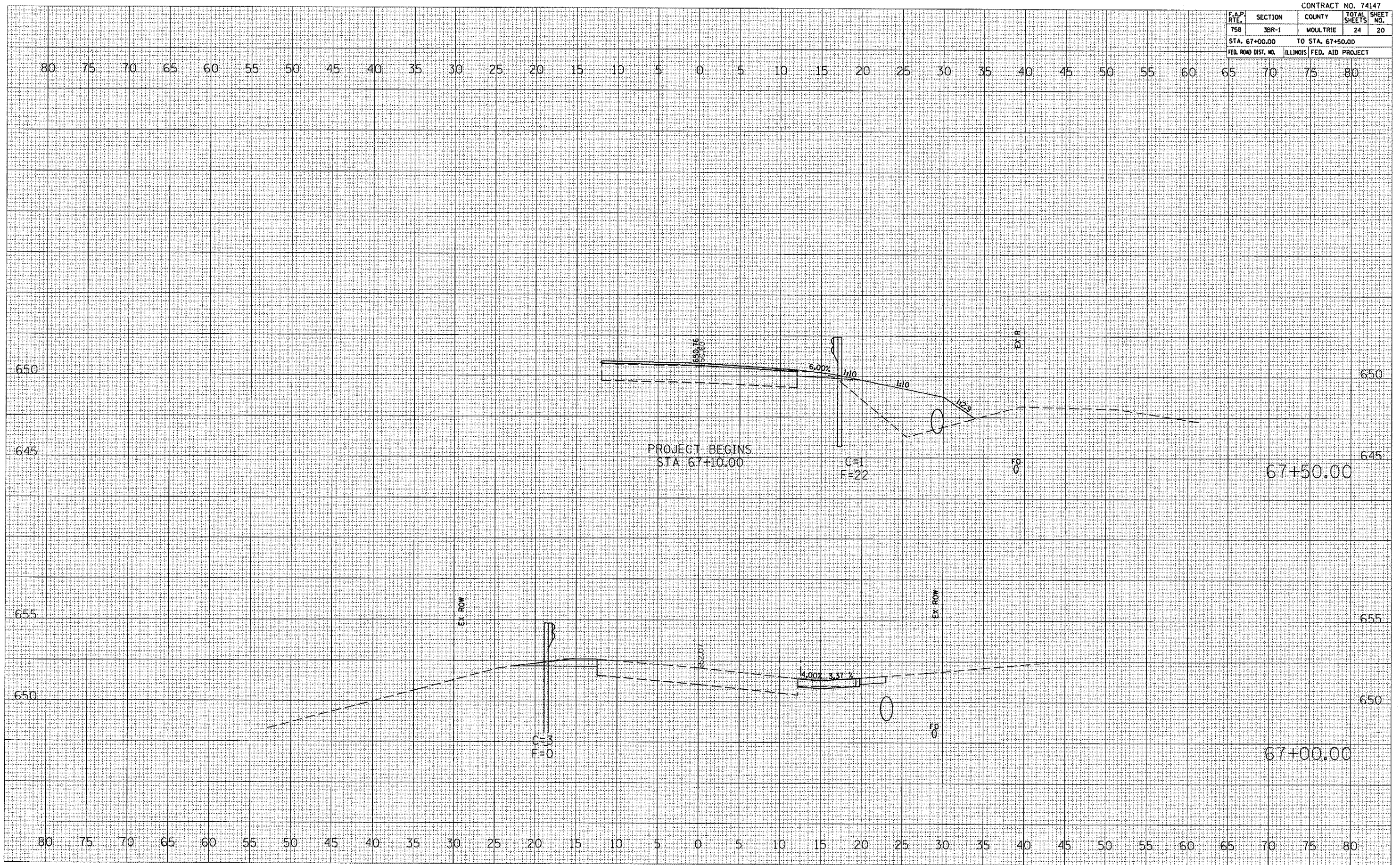


CONTRACT NO. 74147				
F.A.P. RTE.	SECTION	COUNTY	TOTAL SHEETS	SHEET NO.
758	3BR-1	MOULTRIE	24	20
STA. 67+00.00		TO STA. 67+50.00		
FED. ROAD DIST. NO.	ILLINOIS	FED. AID PROJECT		

FINAL SURVEY	DATE
SUPPLIED	BY
NOTE BOOK	
NO.	
AREAS CHECKED	

ORIGINAL SURVEY	DATE
PLOTTED	BY
NO.	
AREAS CHECKED	

PLOT DATE : 10/20/2006
 PLOT SCALE : 1" = 40'
 USER NAME : kmgmb



F.A.P. RTE.	SECTION	COUNTY	TOTAL SHEETS	SHEET NO.
758	3BR-1	MOULTRIE	24	21

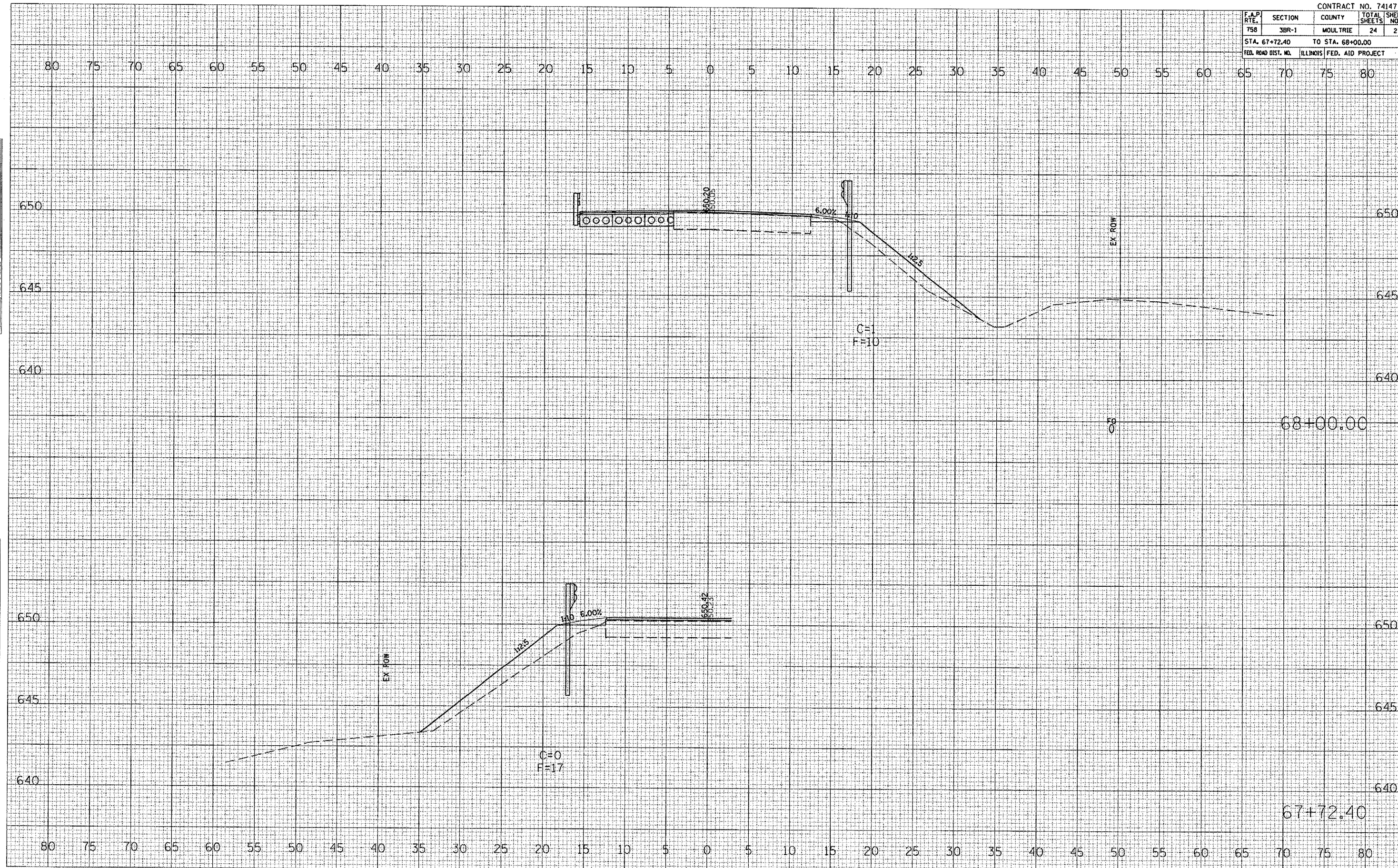
STA. 67+72.40 TO STA. 68+00.00

FED. ROAD DIST. NO. ILLINOIS FED. AID PROJECT

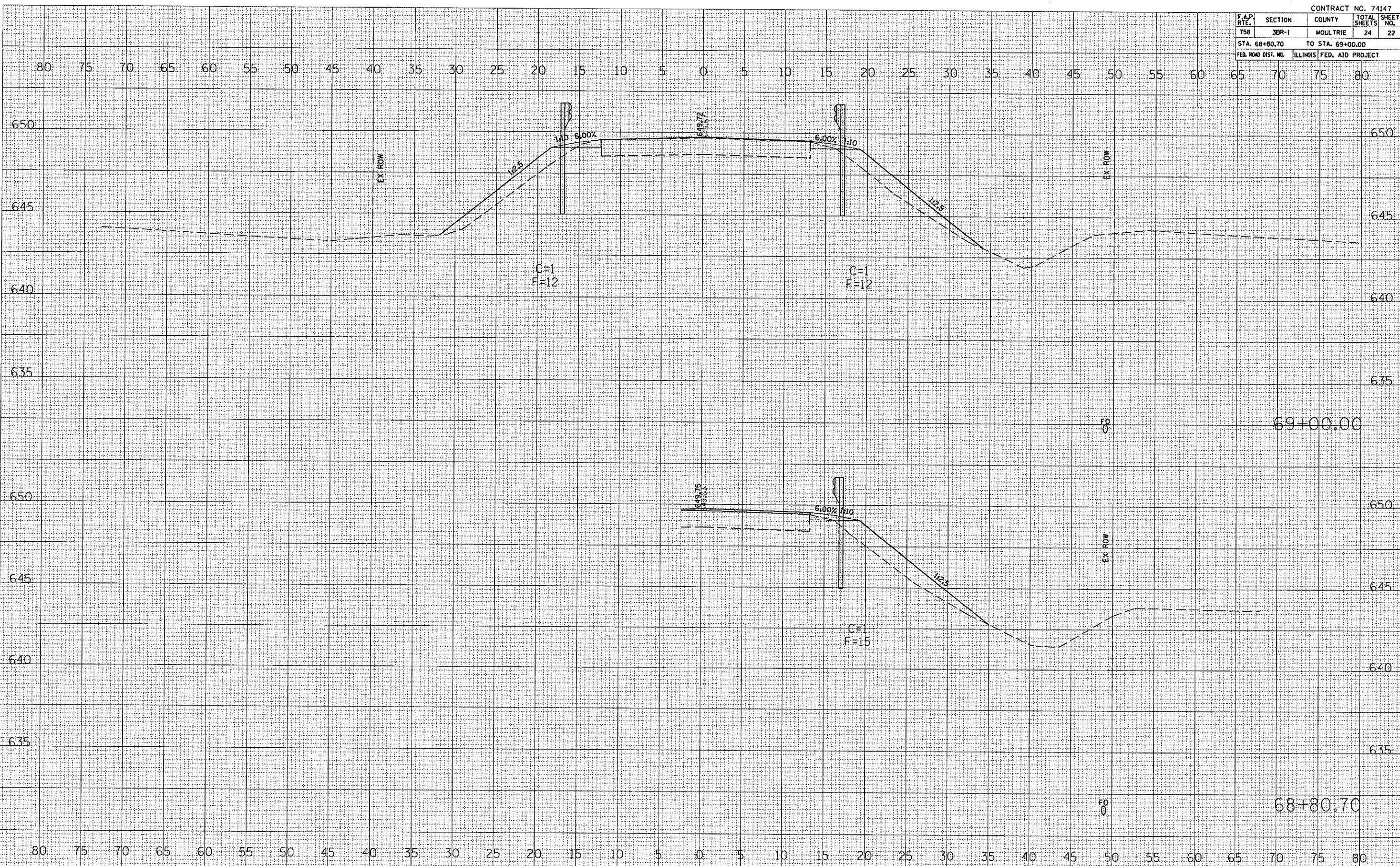
DATE	BY

DATE	BY

PLOT DATE : 10/19/2006
 FILE NAME : c:\p\proj\10250200\p\blank\blank.dwg
 USER NAME : jk
 PLOTTER : HPGL-2 / IN



CONTRACT NO. 74147				
F.A.P. RTE.	SECTION	COUNTY	TOTAL SHEETS	SHEET NO.
758	3BR-1	MOULTRIE	24	22
STA. 68+80.70 TO STA. 69+00.00				
FED. ROAD DIST. NO.	ILLINOIS FED. AID PROJECT			

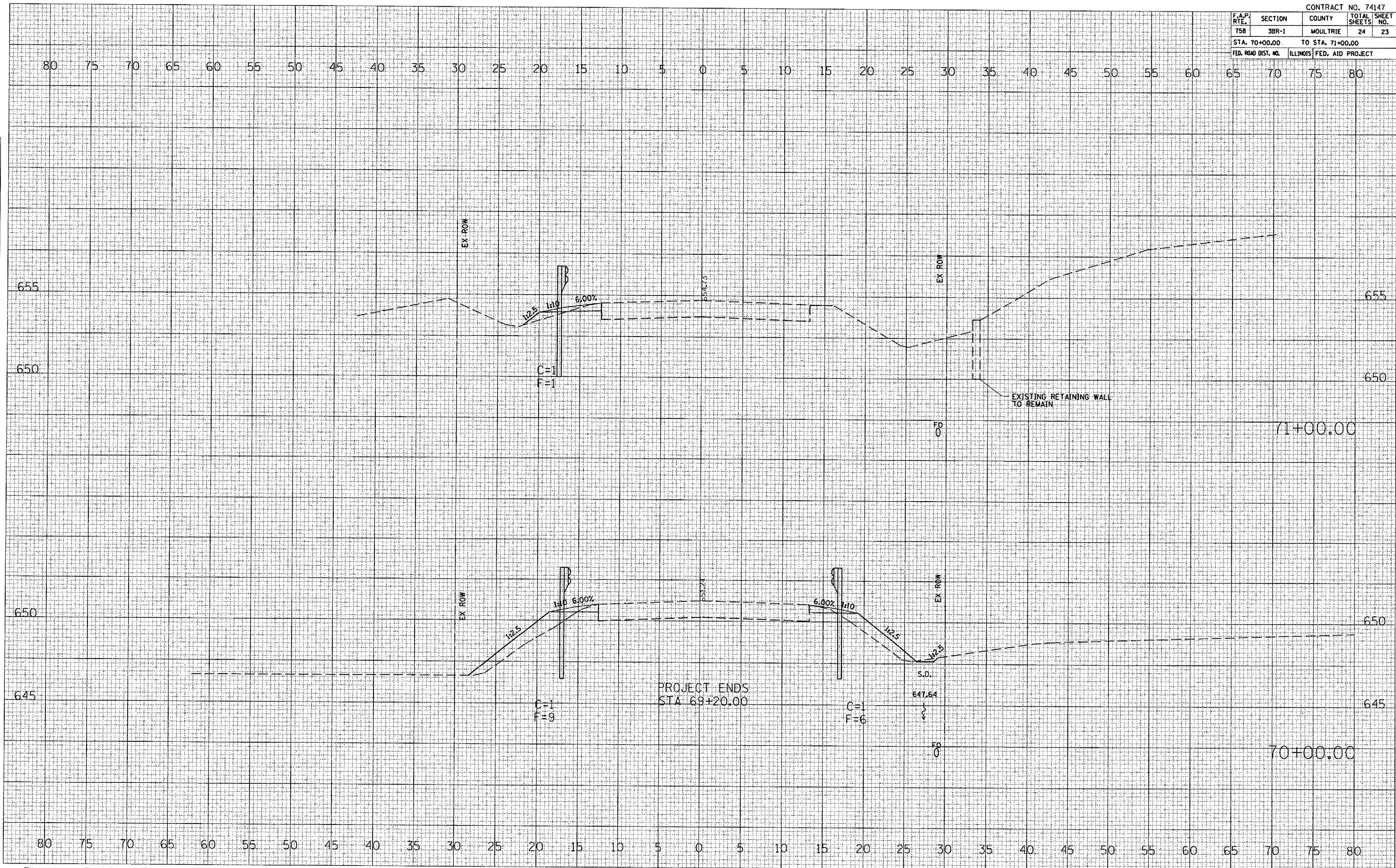


DATE _____
 BY _____
 SURVEYED _____
 PLOTTED _____
 NOTE BOOK _____
 AREAS _____
 AREAS CHECKED _____

DATE _____
 BY _____
 SURVEYED _____
 PLOTTED _____
 NOTE BOOK _____
 AREAS _____
 AREAS CHECKED _____

PLOT DATE = 10/19/2006
 FILE NAME = c:\p\projects\74147\74147.dwg
 PLOT SCALE = 1/8" = 1' / IN.
 USER NAME = Regero

CONTRACT NO. 74147				
F.A.P. RTE.	SECTION	COUNTY	TOTAL SHEETS	SHEET NO.
758	3BR-1	MOULTRIE	24	23
STA. 70+00.00		TO STA. 71+00.00		
FED. ROAD DIST. NO.	ILLINOIS	FED. AID PROJECT		



FINAL SURVEY	DATE
NOTE BOOK	
AREAS CHECKED	

ORIGINAL SURVEY	DATE
FLATTED	
AREAS CHECKED	

PLOT DATE: 10/19/2006
 PLOT SCALE: 1"=40'
 USER NAME: hsp@b

CONTRACT NO. 74147				
F.A.P. RTE.	SECTION	COUNTY	TOTAL SHEETS	SHEET NO.
758	3BR-1	MOULTRIE	24	24
STA. 71+41.80		TO STA. 72+00.00		
FED. ROAD DIST. NO.	ILLINOIS	FED. AID PROJECT		

BY _____ DATE _____
 SURVEYED _____
 SURVEY PLOTTED _____
 NO. 1 BOX _____
 AREAS CHECKED _____
 NO. _____

BY _____ DATE _____
 ORIGINAL SURVEYED _____
 SURVEY PLOTTED _____
 NO. 1 BOX _____
 AREAS CHECKED _____
 NO. _____

PLOT DATE = 10/19/2006
 FILE NAME = c:\p\proj\11\0602303\10\1\submit
 PLOT SCALE = 1/8"=1'-0"
 USER NAME = kgp6b

