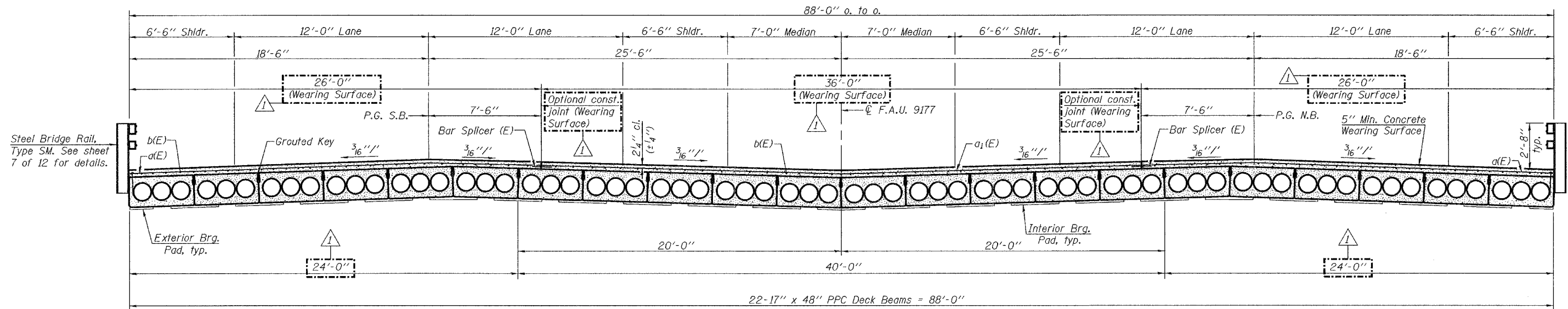


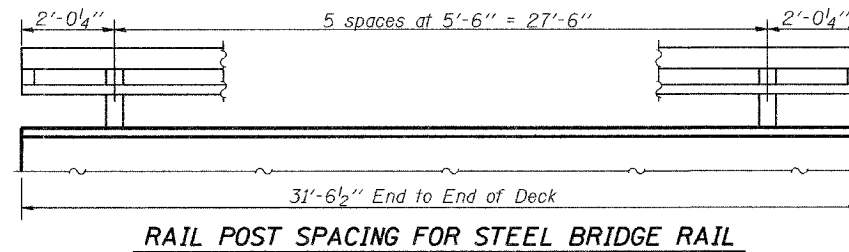
STATE OF ILLINOIS  
DEPARTMENT OF TRANSPORTATION

ROUTE NO.	SECTION	COUNTY	SHEETS	SHEET	SHEET NO. 4
F.A.U. 9177	44-1BR	St. Clair	29	19	
FED. ROAD DIST. NO. 7	ILLINOIS	FED. AID PROJECT-			

Contract #76566

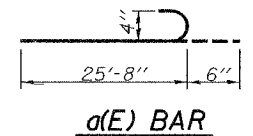


**CROSS SECTION**  
(Looking North)

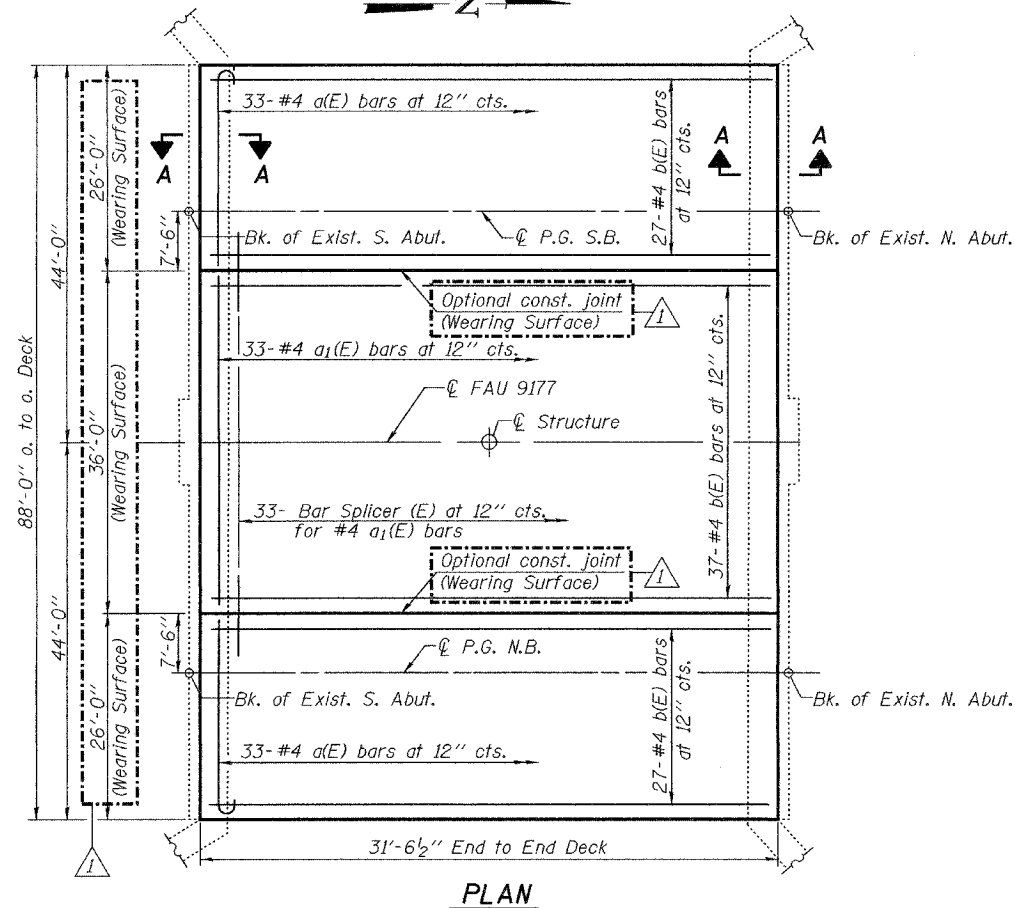


**RAIL POST SPACING FOR STEEL BRIDGE RAIL**

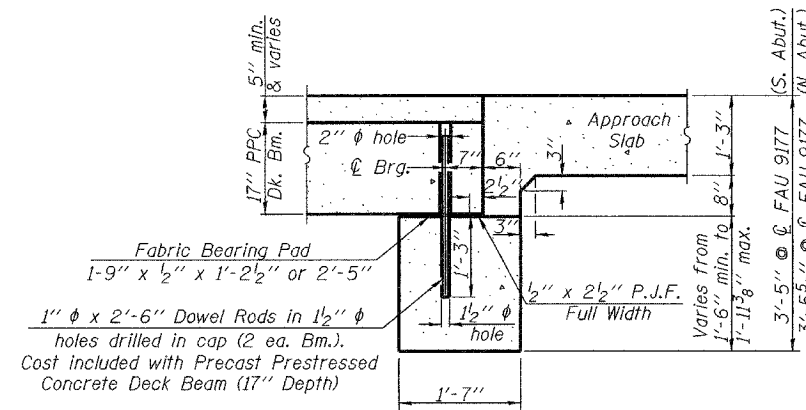
Note: Bend a(E) or a<sub>1</sub>(E) bars in field to maintain 2 1/4" (± 1/4") clearance to Top Surface of Concrete Wearing Surface. Also tilt hook of a(E) and a<sub>1</sub>(E) bars for 2 1/4" (± 1/4") Clearance.



**a(E) BAR**



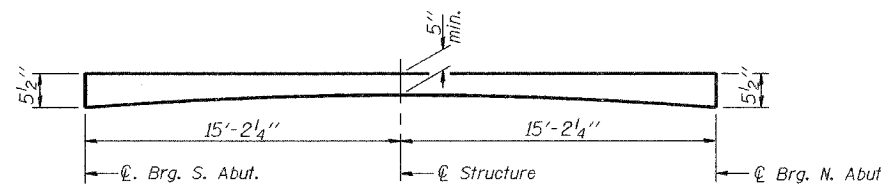
**PLAN**



**SECTION A-A**

**CONCRETE WEARING SURFACE  
BILL OF MATERIAL**

Bar	No.	Size	Length	Shape	
a(E)	66	#4	26'-2"	U	
a <sub>1</sub> (E)	33	#4	35'-8"	—	
b(E)	91	#4	31'-3"	—	
Reinforcement Bars, Epoxy Coated				Pound	3840
Concrete Wearing Surface				Sq. Yd.	309



**REINFORCED CONCRETE WEARING SURFACE PROFILE**

Vary thickness of reinforced concrete wearing surface to compensate for expected camber.

**SUPERSTRUCTURE DETAILS**  
F.A.U. ROUTE 9177-SECTION 44-1BR  
ST. CLAIR COUNTY  
STATION 100+00.00 (NB)  
STATION 200+00.00 (SB)  
S.N. 082-0096 (NB) & 082-0097 (SB)

DESIGNED Nicholas Barnett  
CHECKED Ray Ahanchi  
DRAWN R. Sommer  
CHECKED NRB/GRA

December 7, 2006  
EXAMINED Thomas J. Domagalaki  
PASSED Ralph E. Anderson