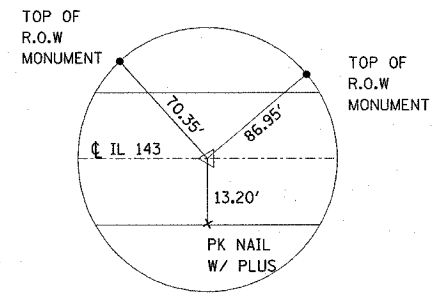
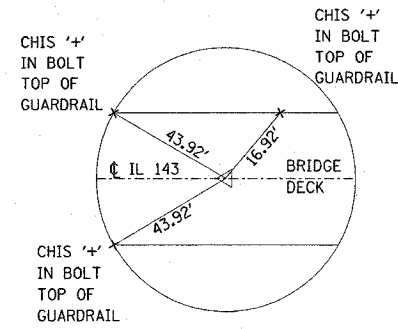


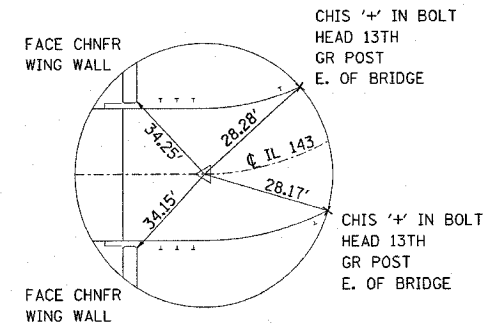
F.A.P. RTE.	SECTION	COUNTY	TOTAL SHEETS	SHEET NO.
789	54BR-1	MADISON	62	8
STA. _____		TO STA. _____		
FED. ROAD DIST. NO. ILLINOIS FED. AID PROJECT				



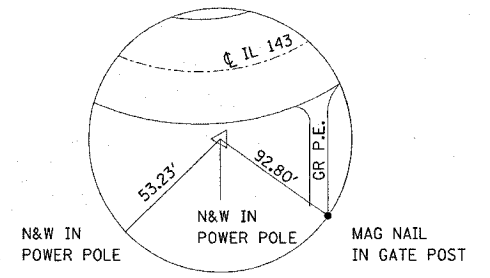
**TIE POINT**  
PK NAIL SET  
STA 269+00.00



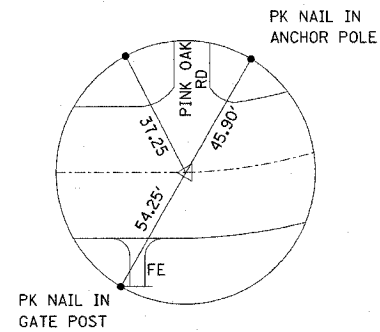
**TIE POINT**  
PK NAIL SET  
CENTER OF STRUCTURE  
STA 280+54.09



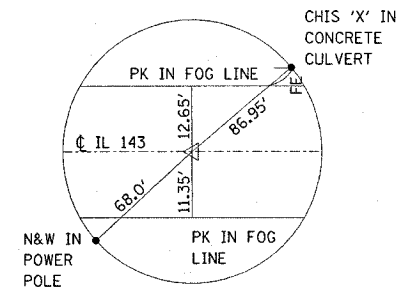
**TIE POINT**  
PK NAIL SET  
P.C. STA 282+53.70



**TIE POINT**  
PK NAIL SET  
P.I. STA 285+61.90



**TIE POINT**  
INTERSECTION OF PIN OAK RD & IL 143  
STA 286+78.00



**TIE POINT**  
PK NAIL SET  
P.T. STA 288+66.40

**BENCHMARKS**

BM 1 - CHISELED "□" ON SE WINGWALL TOP, IL 143 & SILVER CREEK BRIDGE  
ELEVATION = 480.08

**TEMPORARY BENCHMARKS**

TBM 1 - TOP OF RIGHT-OF-WAY MONUMENT STA 270+80 OFFSET = ±40' RT  
ELEVATION = 498.35

TBM 2 - TOP OF RIGHT-OF-WAY MONUMENT STA 286+60 OFFSET = ±40' RT  
ELEVATION = 486.66

NOTE: ALL TIES PULLED DIRECT

REVISIONS		ILLINOIS DEPARTMENT OF TRANSPORTATION
NAME	DATE	
		<b>TIES &amp; BENCHMARKS</b>  FAP ROUTE 789 SECTION 54BR-1 MADISON COUNTY  SCALE: VERT. _____ HORIZ. _____ DATE _____ DRAWN BY _____ CHECKED BY _____