

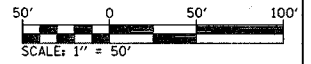
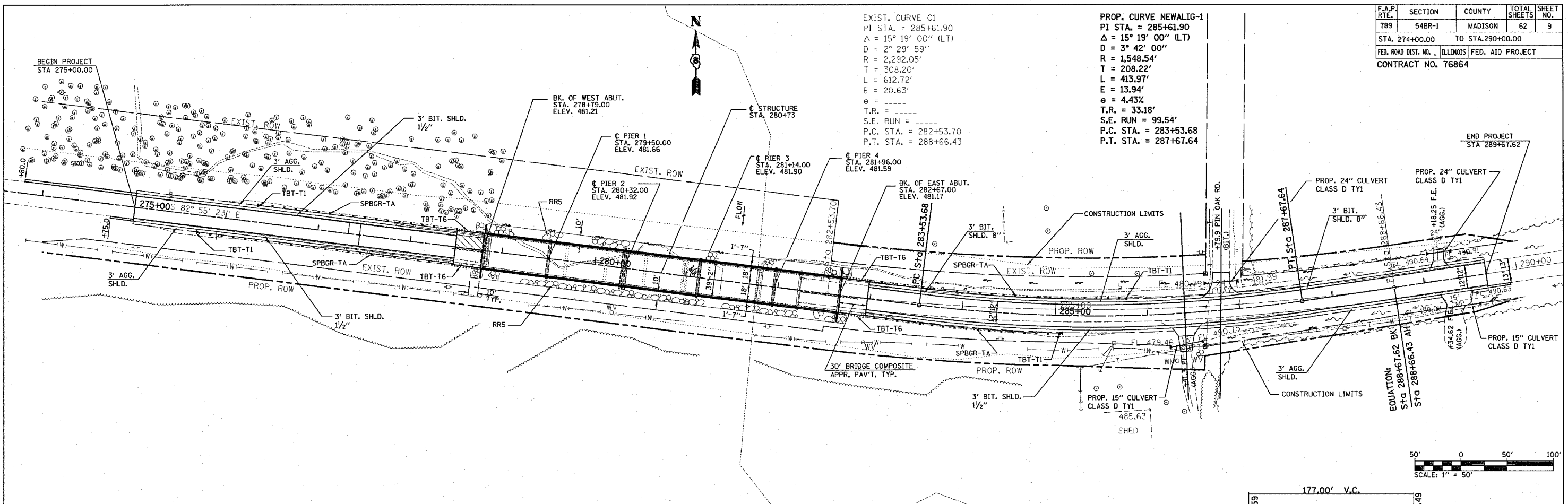
F.A.P. RTE.	SECTION	COUNTY	TOTAL SHEETS	SHEET NO.
789	548R-1	MADISON	62	9
STA. 274+00.00		TO STA. 290+00.00		
FED. ROAD DIST. NO. ILLINOIS FED. AID PROJECT				
CONTRACT NO. 76864				

EXIST. CURVE C1
 PI STA. = 285+61.90
 $\Delta = 15^\circ 19' 00''$ (LT)
 $D = 2^\circ 29' 59''$
 $R = 2,292.05'$
 $T = 308.20'$
 $L = 612.72'$
 $E = 20.63'$
 $e = \text{---}$
 $T.R. = \text{---}$
 $S.E. RUN = \text{---}$
 $P.C. STA. = 282+53.70$
 $P.T. STA. = 288+66.43$

PROP. CURVE NEWALIG-1
 PI STA. = 285+61.90
 $\Delta = 15^\circ 19' 00''$ (LT)
 $D = 3^\circ 42' 00''$
 $R = 1,548.54'$
 $T = 208.22'$
 $L = 413.97'$
 $E = 13.94'$
 $e = 4.43\%$
 $T.R. = 33.18'$
 $S.E. RUN = 99.54'$
 $P.C. STA. = 283+53.68$
 $P.T. STA. = 287+67.64$

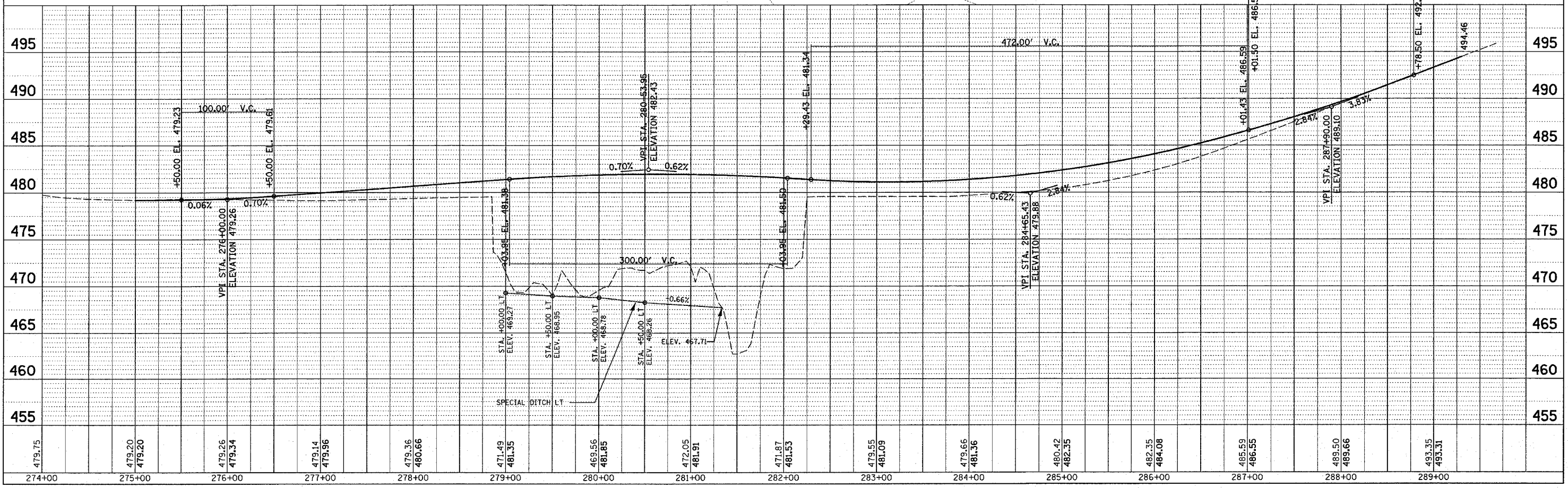
DATE	BY	REVISION

PLAN
 SURVEYED BY: _____
 CHECKED BY: _____
 DATE: _____
 NOTE BOOK NO.: _____
 STRUCTURE NOTATION: _____



DATE	BY	REVISION

PROFILE
 SURVEYED BY: _____
 CHECKED BY: _____
 DATE: _____
 NOTE BOOK NO.: _____
 STRUCTURE NOTATION: _____



PLOT DATE = 10/18/2006
 FILE NAME = c:\p\proj\548r1\485\plan\p1081086b.dgn
 PLOT SCALE = 50.000000 / IN
 REFERENCE = #REF#