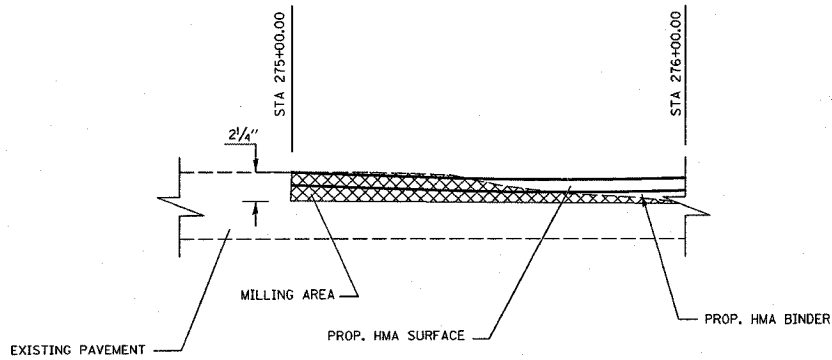
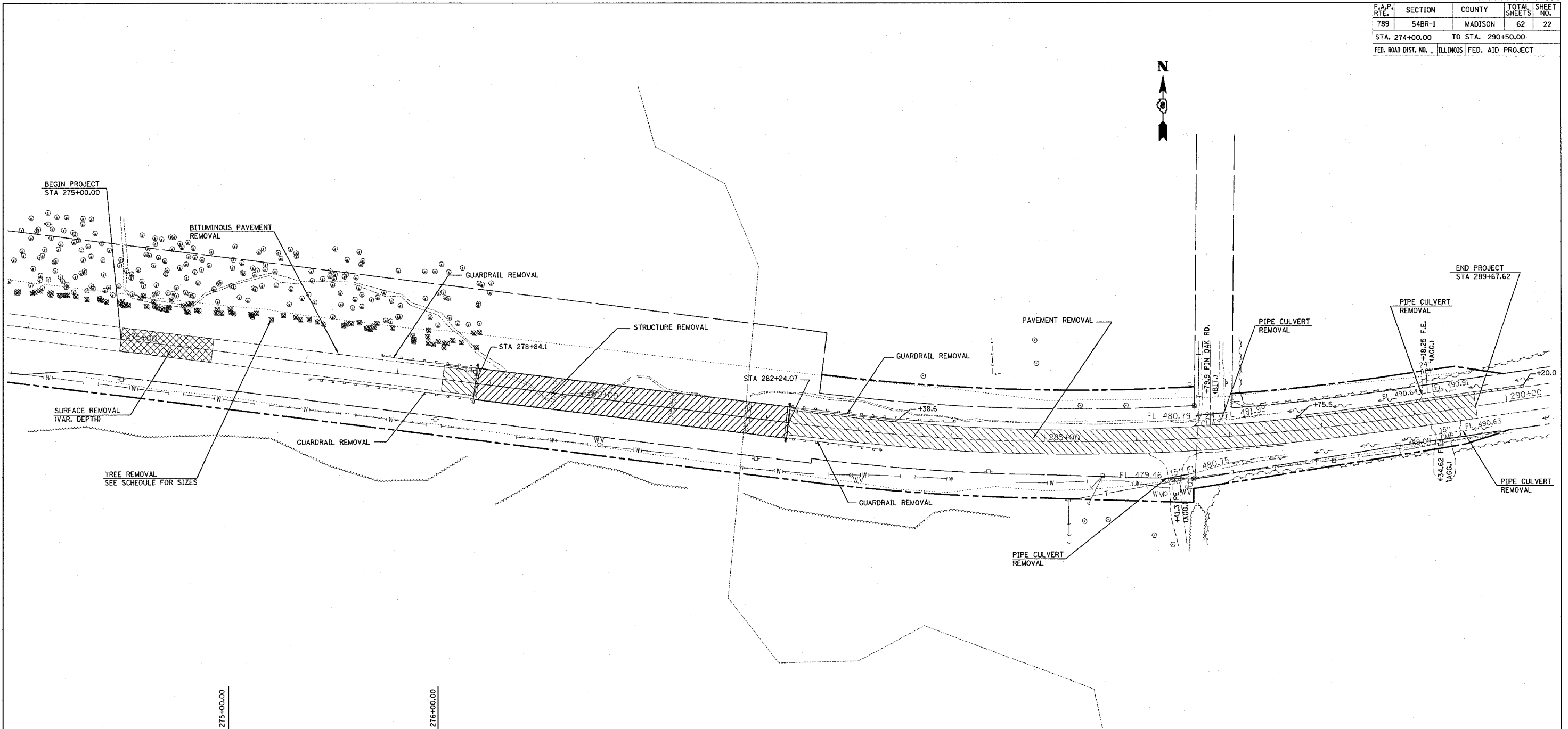


F.A.P. RTE.	SECTION	COUNTY	TOTAL SHEETS	SHEET NO.
789	54BR-1	MADISON	62	22
STA. 274+00.00 TO STA. 290+50.00				
FED. ROAD DIST. NO. 1		ILLINOIS	FED. AID PROJECT	



LEGEND:

- STRUCTURE REMOVAL
- PAVEMENT REMOVAL
- SURFACE REMOVAL - VAR. DEPTH (MILLING)
- TREE REMOVAL



REVISIONS	
NAME	DATE

ILLINOIS DEPARTMENT OF TRANSPORTATION
REMOVAL SHEET
 FAP ROUTE 789
 SECTION 54BR-1
 MADISON COUNTY
 SCALE: VERT. _____
 HORIZ. _____
 DATE _____ DRAWN BY _____
 CHECKED BY _____