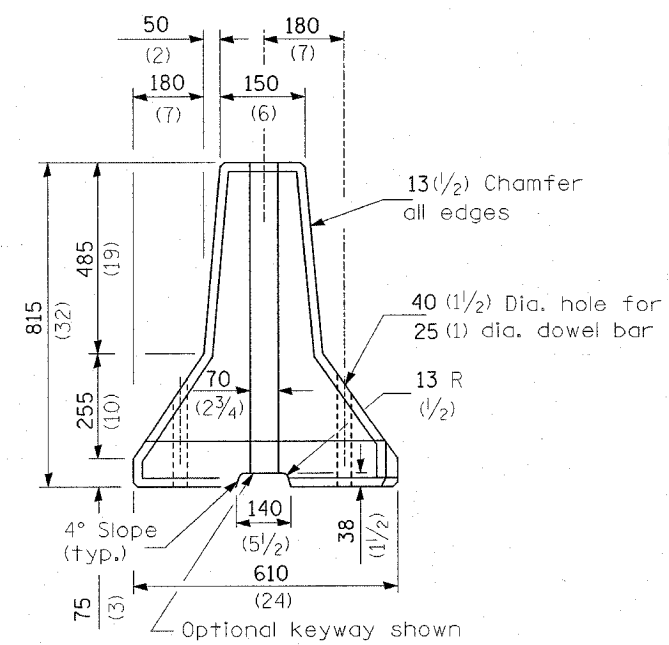
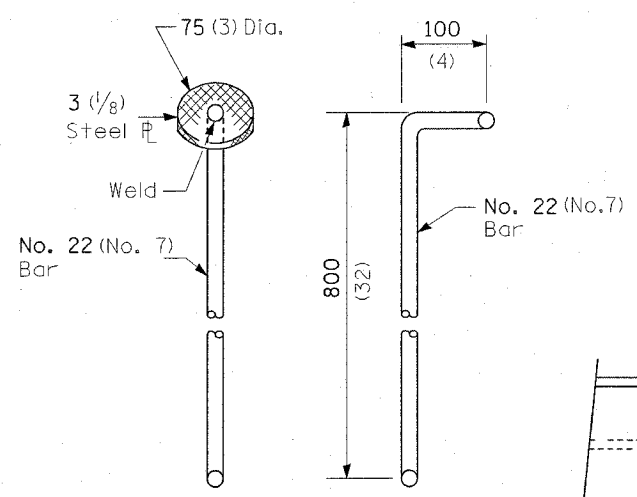


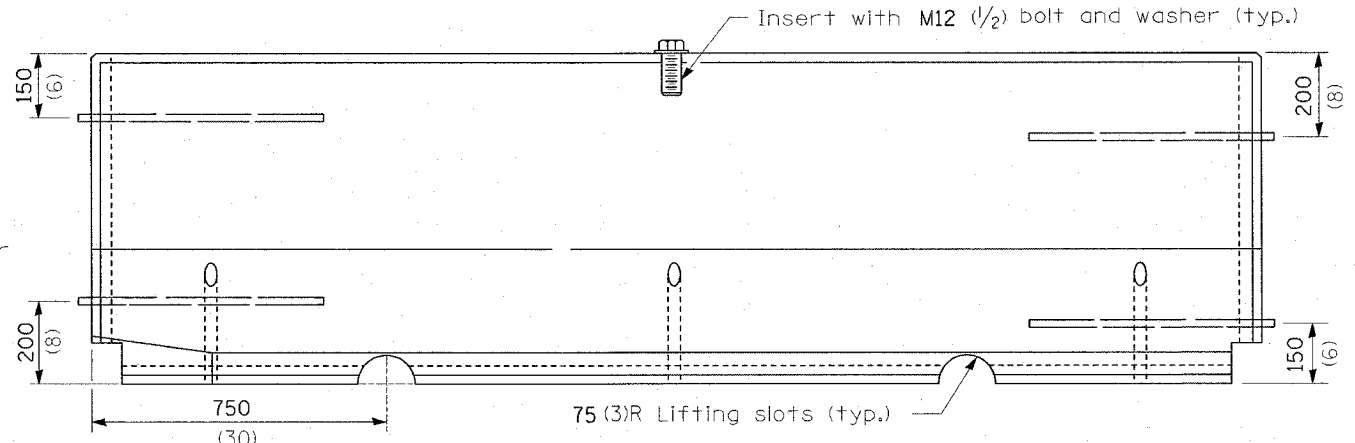
F.A.P. RTE.	SECTION	COUNTY	TOTAL SHEETS	SHEET NO.
789	54BR-1	MADISON	62	24
STA.	TO STA.			
FED. ROAD DIST. NO. - ILLINOIS FED. AID PROJECT				



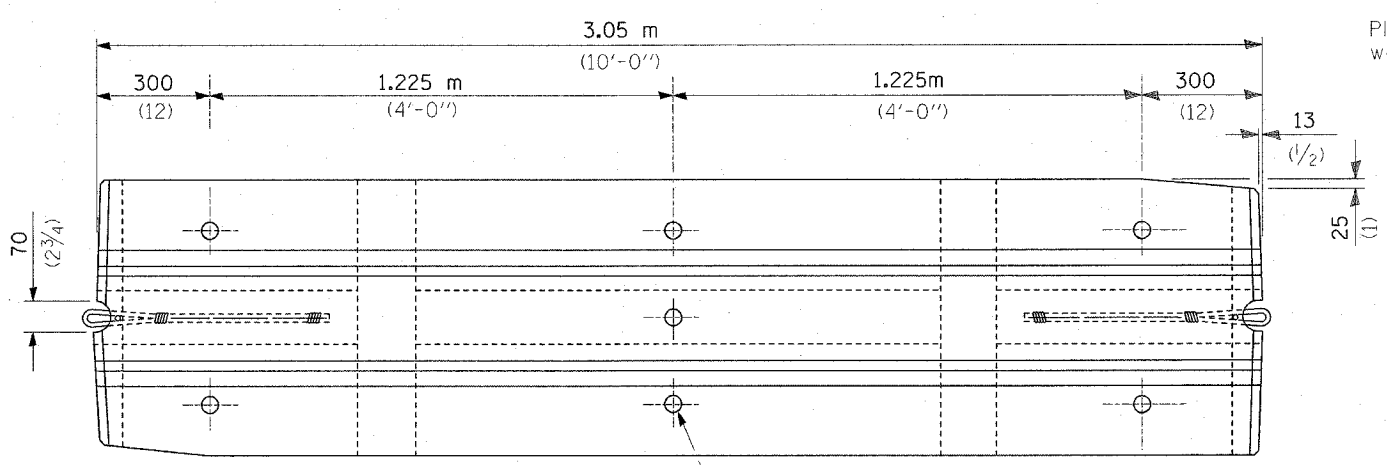
END VIEW
(without wire rope loops)



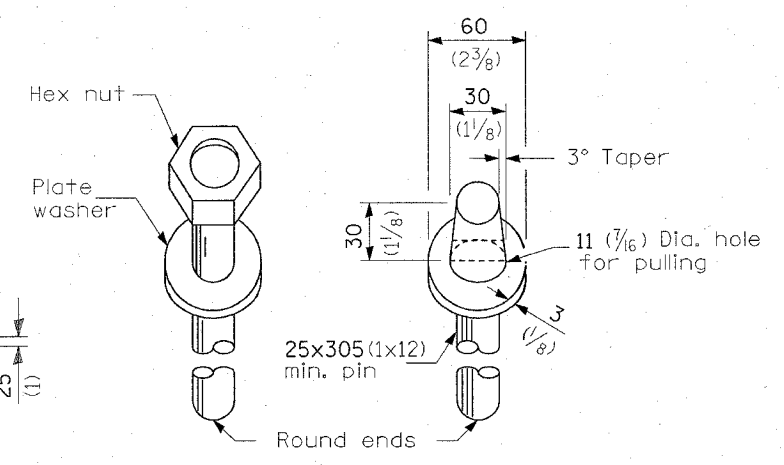
ALTERNATE CONNECTING PINS



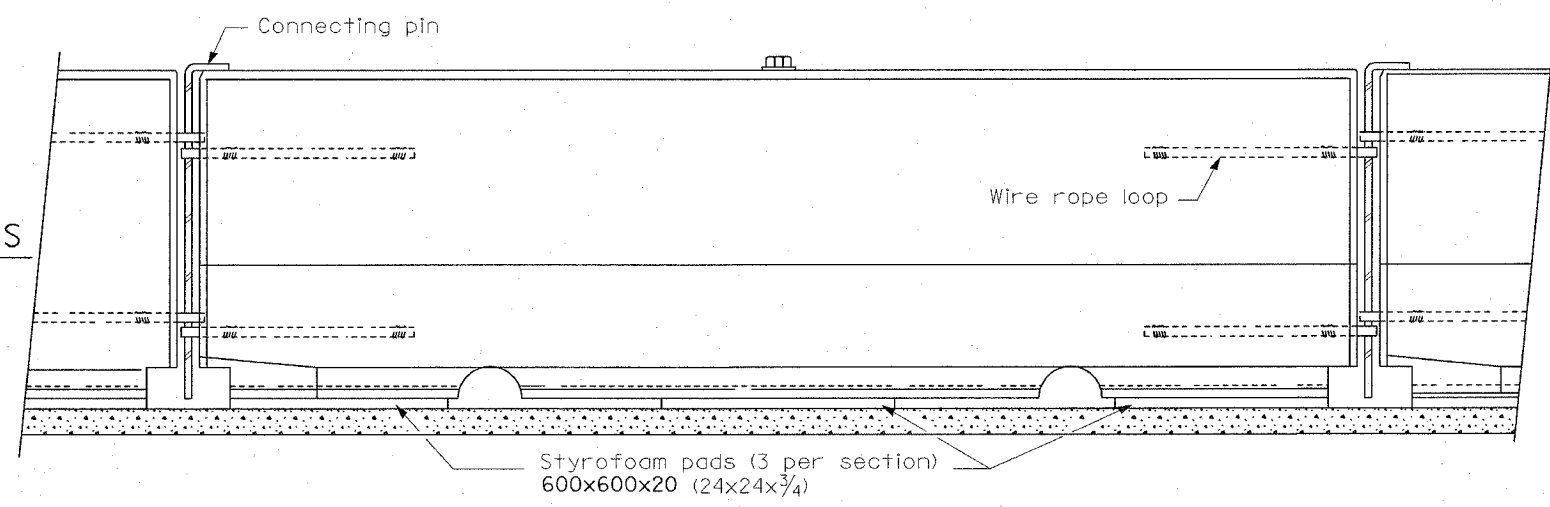
ELEVATION



PLAN



DOWEL BARS



TYPICAL INSTALLATION WITH STYROFOAM PADS

NOTES:
New Jersey (NJ) shape barrier shall not be produced after October 1, 2002. However, New Jersey shape barrier produced prior to October 1, 2002 may be used until January 1, 2008.

The NJ shape barrier units shall be seated on styrofoam pads except when they are anchored.

NJ shape dowel bars shall be embedded at least 200 (8) into the pavement, and shall not project above the outer surface of the barrier. The connecting pin for the NJ shape pin and loop connection, may be either a plain 22 (7/8) diameter or a deformed No. 22 (No. 7) bar meeting the requirements of Article 1006.10(b) except Grade 400 (Grade 60) bars shall be used.

REVISIONS	
NAME	DATE

ILLINOIS DEPARTMENT OF TRANSPORTATION
TEMPORARY CONCRETE BARRIER
NJ SHAPE DESIGN
FAP ROUTE 789
SECTION 54BR-1
MADISON COUNTY
SCALE: VERT. _____
HORIZ. _____
DATE _____ DRAWN BY _____
CHECKED BY _____

PLOT DATE = 10/18/2006
FILE NAME = c:\p\proj\secta\vd\81485\plan\vd\81485b.dgn
PLOT SCALE = 50,000% / IN.
REFERENCE = #REF#