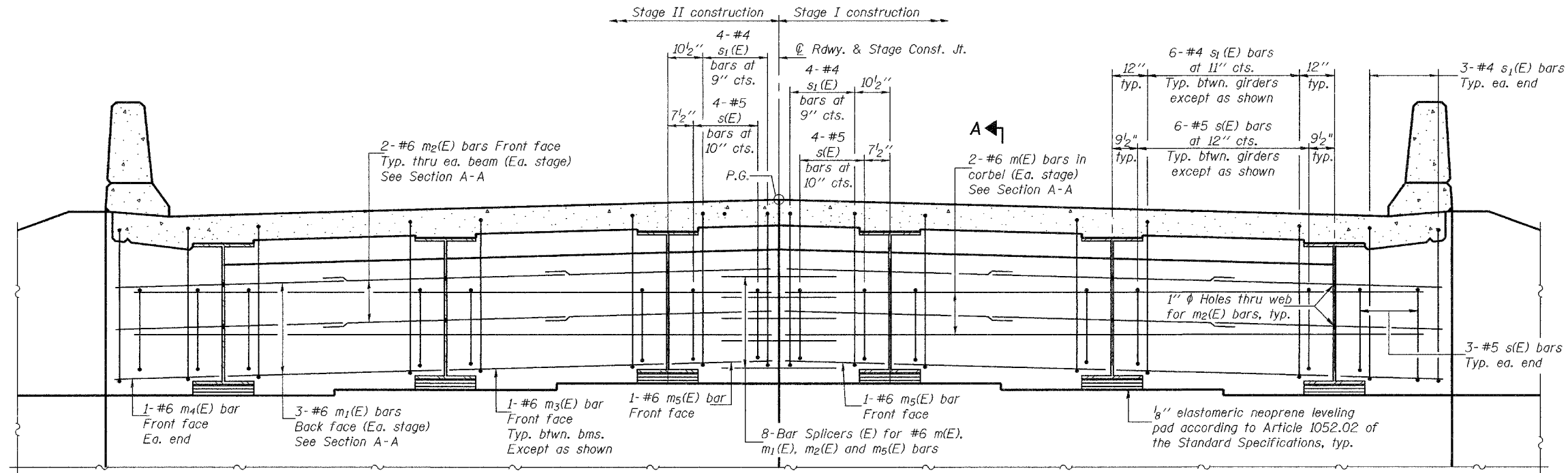


STATE OF ILLINOIS
DEPARTMENT OF TRANSPORTATION

| | | | | |
|-----------------------|---------|----------|-------------------|-----------|
| ROUTE NO. | SECTION | COUNTY | SHEET NO. | SHEET NO. |
| FAP 789 | 54BR-1 | MADISON | 62 | 35 |
| FED. ROAD DIST. NO. 7 | | ILLINOIS | FED. AID PROJECT- | |

SHEET NO. 11
25 SHEETS

Contract #76864



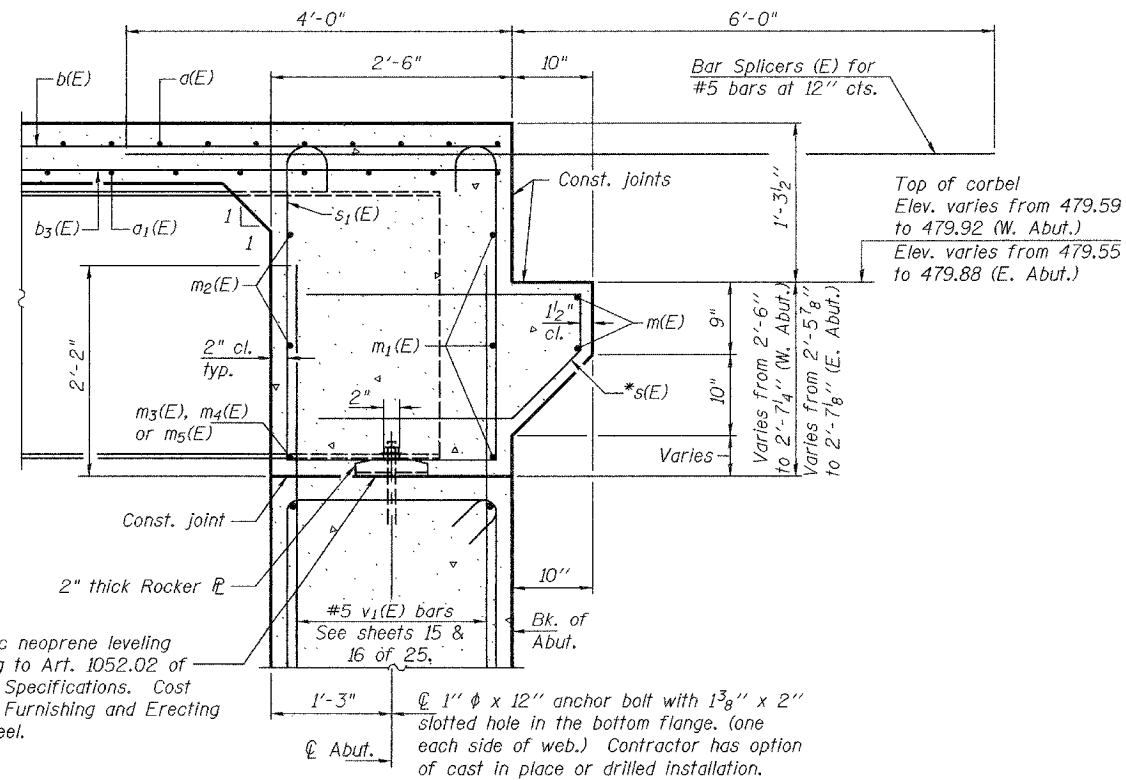
DIAPHRAGM ELEVATION AT EAST ABUTMENT

(Looking east - West abutment similar at 180° rotation)

Notes: Reinforcement bars in diaphragm are billed with superstructure on sheet 10 of 25.
Concrete in diaphragm is included with Concrete Superstructure on sheet 10 of 25.
For details of bars s(E) & s₁(E) see sheet 10 of 25.
See sheet 12 of 25 for holes thru web for m₂(E) bars.
For anchor bolt details see sheet 14 of 25.
For bar splicer (E) details see sheet 21 of 25.

MIN. BAR LAP

#6 bar = 2'-9"



SECTION A-A

* Space reinforcement in corbel to miss anchor dowels. See sheet 22 of 25 for anchor dowel location.

| | |
|----------|-----------------|
| DESIGNED | Curt M. Evoy |
| CHECKED | Nick R. Barnett |
| DRAWN | h.t. duong |
| CHECKED | CME/NRB |

| | |
|----------|---|
| EXAMINED | Thomas J. Damagala ENGINEER OF BRIDGE DESIGN |
| PASSED | Ralph E. Anderson ENGINEER OF BRIDGES AND STRUCTURES |

DIAPHRAGM DETAILS
F.A.P. RTE. 789 - SEC. 54BR-1
MADISON COUNTY
STATION 280+73
STRUCTURE NO. 060-0340