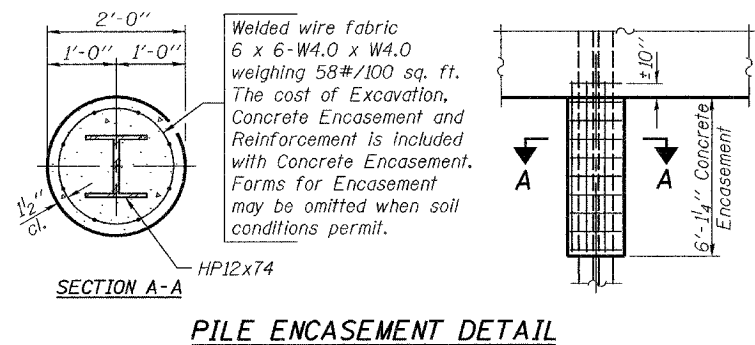


STATE OF ILLINOIS
DEPARTMENT OF TRANSPORTATION

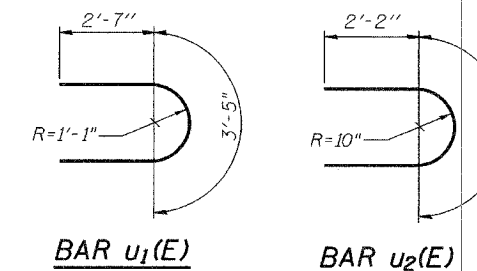
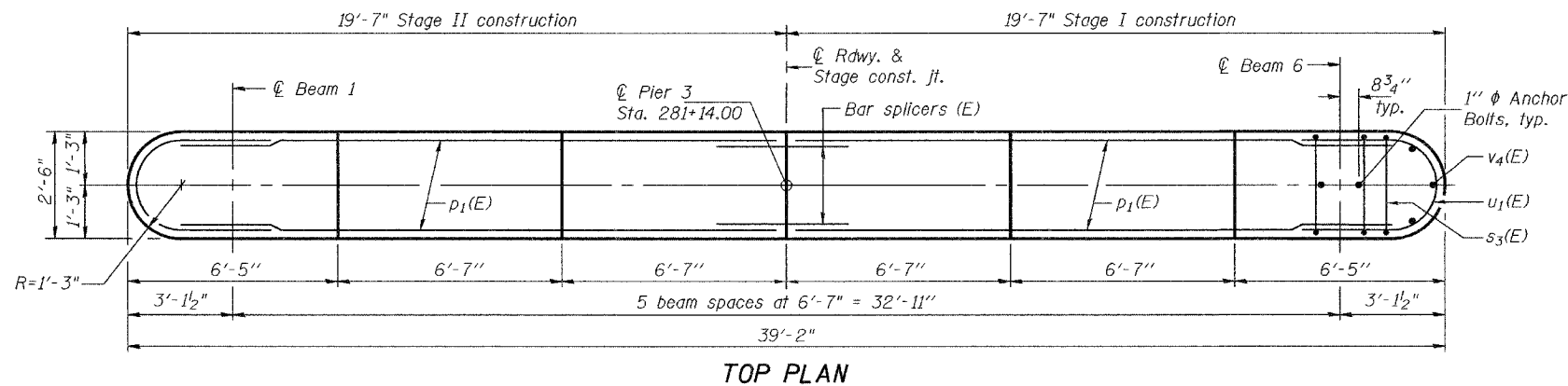
ROUTE NO.	SECTION	COUNTY	LENG.	SHEET	SHEET NO. 19 25 SHEETS
FAP 789	54BR-1	MADISON	62	43	
FED. ROAD DIST. NO. 7		ILLINOIS	FED. AID PROJECT-		

Contract #76864

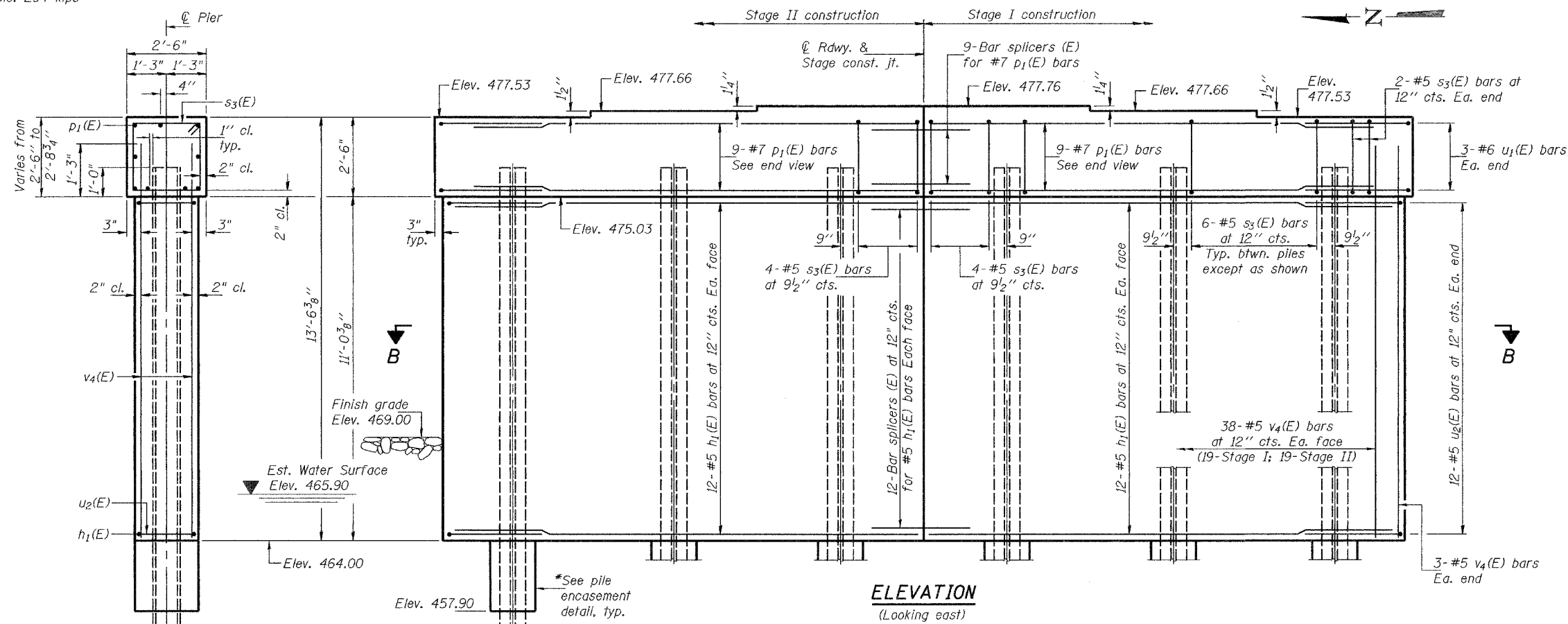


PILE DATA

Type: Steel HP12x74
Nominal Required Bearing: 589 kips
Factored Resistance Available: 294 kips
Est. Length: 37 feet
No. Production Piles: 6
No. Test Piles: 0

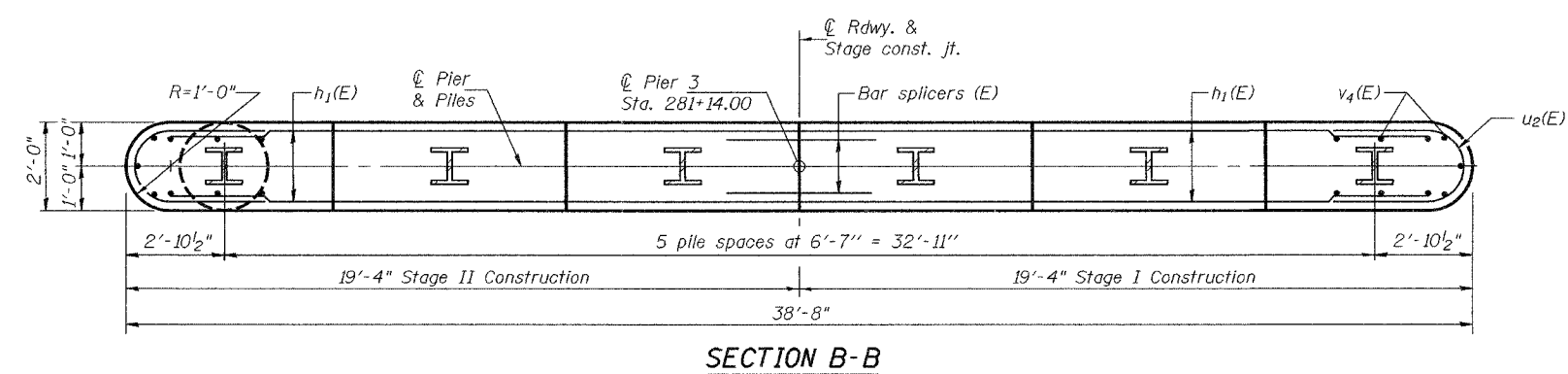
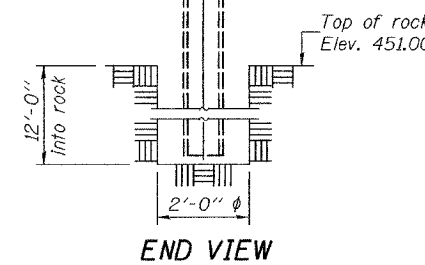
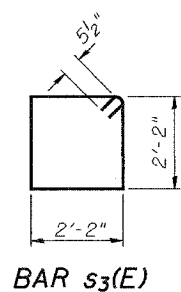


Notes: Pour steps monolithically with cap.
For bar splicer details, see sheet 21 of 25.
For anchor bolt installation details, see sheet 14 of 25.



BILL OF MATERIAL

Bar	No.	Size	Length	Shape
h1(E)	48	#5	18'-2"	—
p1(E)	18	#7	18'-2"	—
s3(E)	36	#5	9'-7"	□
u1(E)	6	#6	8'-7"	—
u2(E)	24	#5	6'-11"	—
v4(E)	82	#5	12'-2"	—
Concrete Structures	Cu. Yd.		40.6	
Reinforcement Bars, Epoxy Coated	Pound		3230	
Structure Excavation	Cu. Yd.		57	
Furnishing Steel Piles HP12x74	Foot		222	
Underwater Structure Excavation Protection Location 1	Each		1	
Concrete Encasement	Cu. Yd.		4.3	
Settling Piles in Rock	Each		6	
Anchor Bolts 1"	Each		12	



*Forms shall be placed below Elevation 464.00 after excavation for pier walls. Reinforcement and Concrete Encasement may be placed underwater into forms. The cost of Concrete Encasement, Reinforcement, form excavation and furnishing and placing forms is included with Concrete Encasement. If a portion of the pier wall is under water, concrete shall be trimmed under water into forms according to Article 503.08 of the Standard Specifications. Concrete shall be trimmed to an Elevation 1'-0" above water level at the time of construction.

DESIGNED	Curt M. Evoy
CHECKED	Nick R. Barnett
DRAWN	h.t. duong
CHECKED	CME/NRB

Nov. 15, 2006
EXAMINED *Thomas J. Damagala*
PASSED *Ralph E. Anderson*
ENGINEER OF BRIDGE DESIGN
ENGINEER OF BRIDGES AND STRUCTURES

PIER 3
F.A.P. RTE. 789 - SEC. 54BR-1
MADISON COUNTY
STATION 280+73
STRUCTURE NO. 060-0340