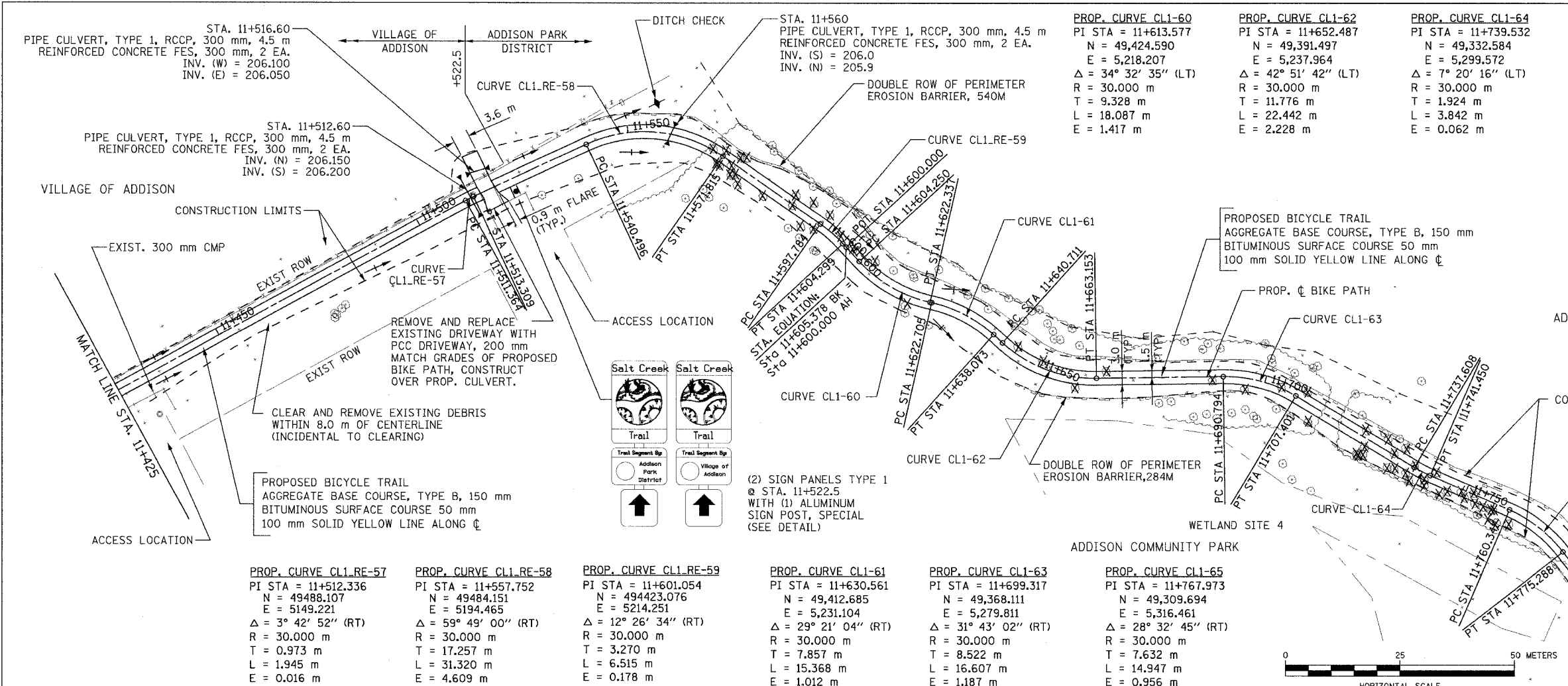
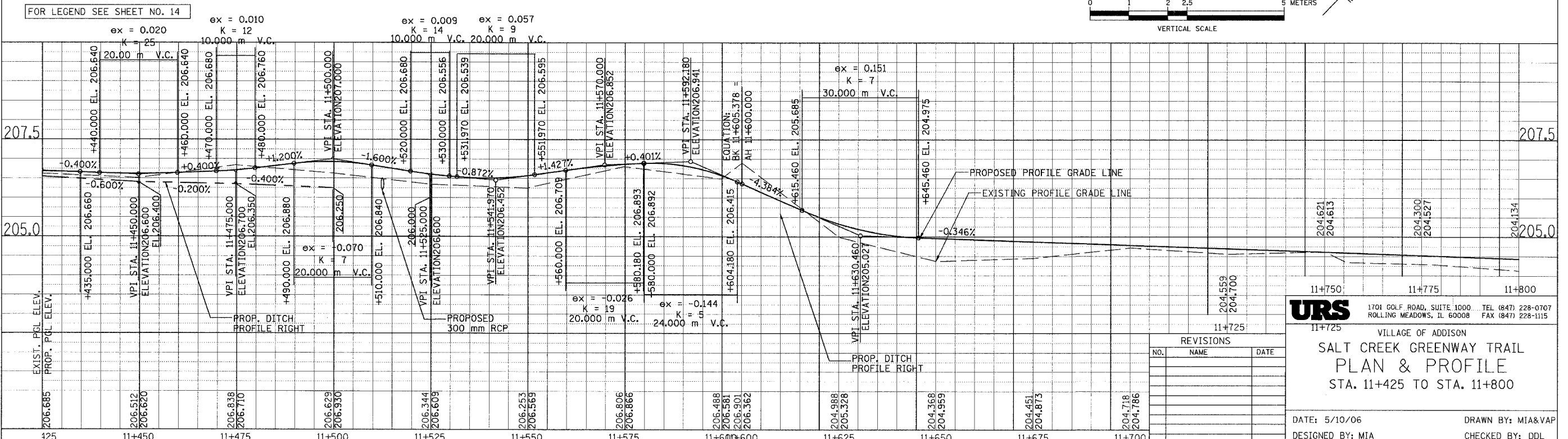
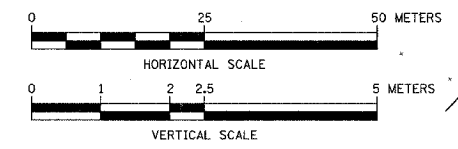


SECTION	COUNTY	TOTAL SHEETS	SHEET NO.
02-00090-00-BT	DUPAGE	117	20
STA. TO STA.			
IDOT PROJECT NO. M-8003(222)			
SALT CREEK GREENWAY TRAIL			
CONTRACT NO. 83713			



PROP. CURVE CL1.RE-57	PROP. CURVE CL1.RE-58	PROP. CURVE CL1.RE-59	PROP. CURVE CL1-61	PROP. CURVE CL1-63	PROP. CURVE CL1-65
PI STA = 11+512.336 N = 49488.107 E = 5149.221 Δ = 3° 42' 52" (RT) R = 30.000 m T = 0.973 m L = 1.945 m E = 0.016 m	PI STA = 11+557.752 N = 49484.151 E = 5194.465 Δ = 59° 49' 00" (RT) R = 30.000 m T = 17.257 m L = 31.320 m E = 4.609 m	PI STA = 11+601.054 N = 49423.076 E = 5214.251 Δ = 12° 26' 34" (RT) R = 30.000 m T = 3.270 m L = 6.515 m E = 0.178 m	PI STA = 11+630.561 N = 49,412.685 E = 5,231.104 Δ = 29° 21' 04" (RT) R = 30.000 m T = 7.857 m L = 15.368 m E = 1.012 m	PI STA = 11+699.317 N = 49,368.111 E = 5,279.811 Δ = 31° 43' 02" (RT) R = 30.000 m T = 8.522 m L = 16.607 m E = 1.187 m	PI STA = 11+767.973 N = 49,309.694 E = 5,316.461 Δ = 28° 32' 45" (RT) R = 30.000 m T = 7.632 m L = 14.947 m E = 0.956 m



URS 1701 GOLF ROAD, SUITE 1000 TEL (847) 228-0707
ROLLING MEADOWS, IL 60008 FAX (847) 228-1115

VILLAGE OF ADDISON
SALT CREEK GREENWAY TRAIL
PLAN & PROFILE
STA. 11+425 TO STA. 11+800

DATE: 5/10/06 DRAWN BY: MIA&VAP
DESIGNED BY: MIA CHECKED BY: DDL

REVISIONS		
NO.	NAME	DATE