

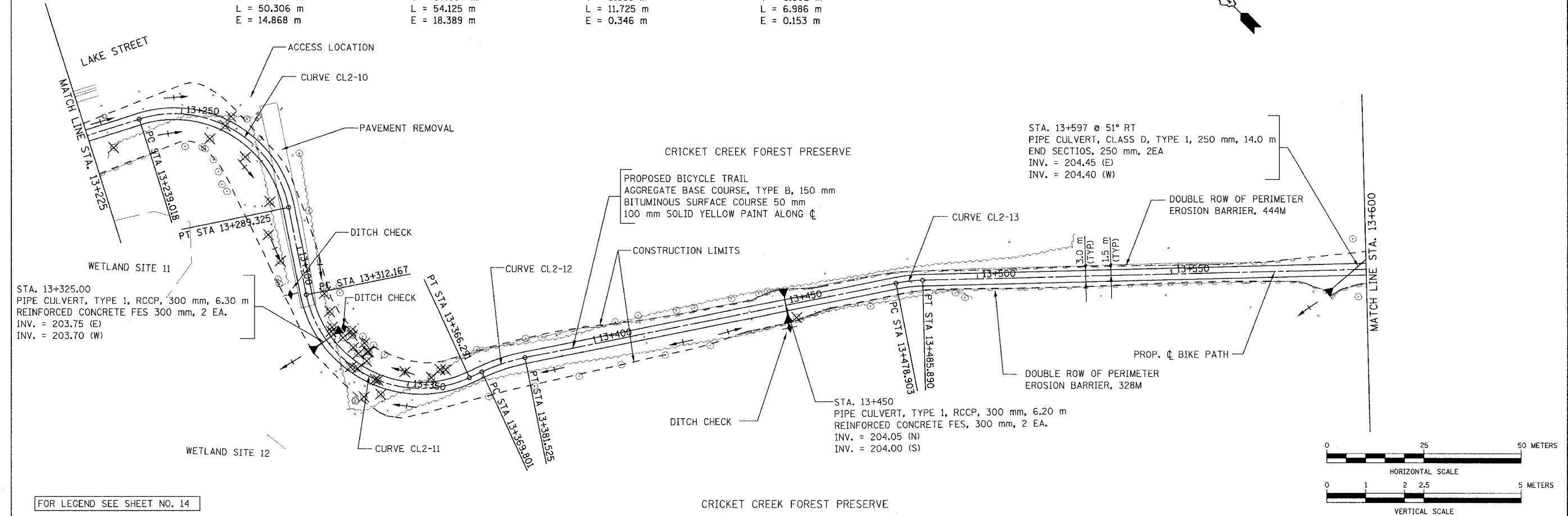
PROP. CURVE CL2-10
 PI STA = 13+272.382
 N = 48,362.456
 E = 5,904.720
 $\Delta = 96^\circ 04' 42''$ (RT)
 R = 30.000 m
 T = 33.364 m
 L = 50.306 m
 E = 14.868 m

PROP. CURVE CL2-11
 PI STA = 13+350.133
 N = 48,283.945
 E = 5,852.714
 $\Delta = 103^\circ 22' 15''$ (LT)
 R = 30.000 m
 T = 37.967 m
 L = 54.125 m
 E = 18.389 m

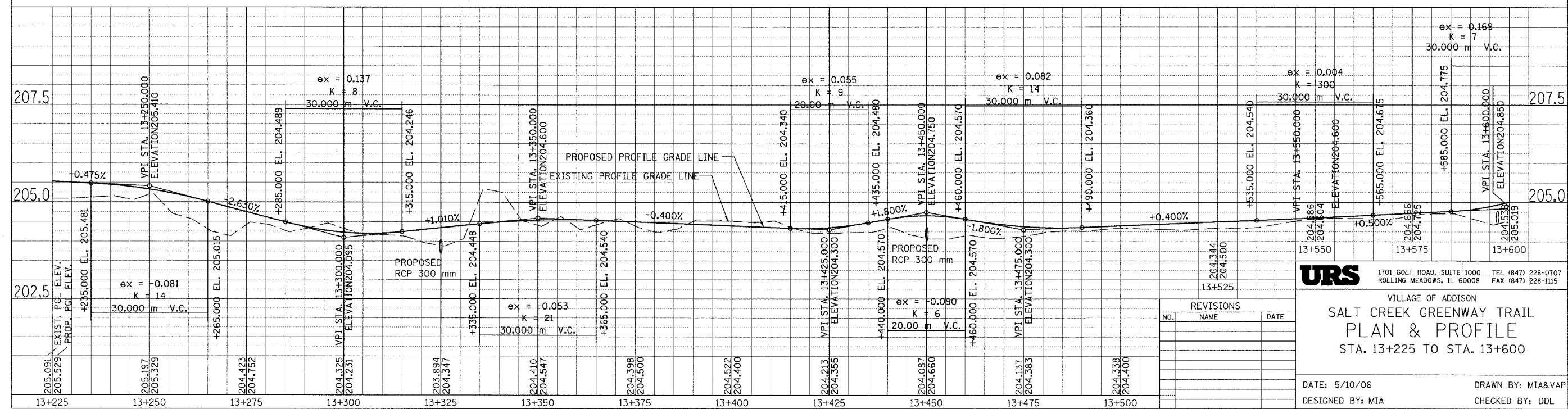
PROP. CURVE CL2-12
 PI STA = 13+375.690
 N = 48,267.629
 E = 5,897.181
 $\Delta = 13^\circ 26' 08''$ (RT)
 R = 50.000 m
 T = 5.889 m
 L = 11.725 m
 E = 0.346 m

PROP. CURVE CL2-13
 PI STA = 13+482.405
 N = 48,208.567
 E = 5,986.127
 $\Delta = 10^\circ 00' 27''$ (RT)
 R = 40.000 m
 T = 3.502 m
 L = 6.986 m
 E = 0.153 m

SECTION	COUNTY	TOTAL SHEETS	SHEET NO.
02-00090-00-BT	DUPAGE	117	25
STA. TO STA.			
IDOT PROJECT NO. M-8003(222)			
SALT CREEK GREENWAY TRAIL			
CONTRACT NO. 83713			



FOR LEGEND SEE SHEET NO. 14



URS 1701 GOLF ROAD, SUITE 1000 TEL (847) 228-0707
 ROLLING MEADOWS, IL 60008 FAX (847) 228-1115

VILLAGE OF ADDISON
**SALT CREEK GREENWAY TRAIL
 PLAN & PROFILE
 STA. 13+225 TO STA. 13+600**

DATE: 5/10/06 DRAWN BY: MIA&VAP
 DESIGNED BY: MIA CHECKED BY: DDL

REVISIONS		
NO.	NAME	DATE