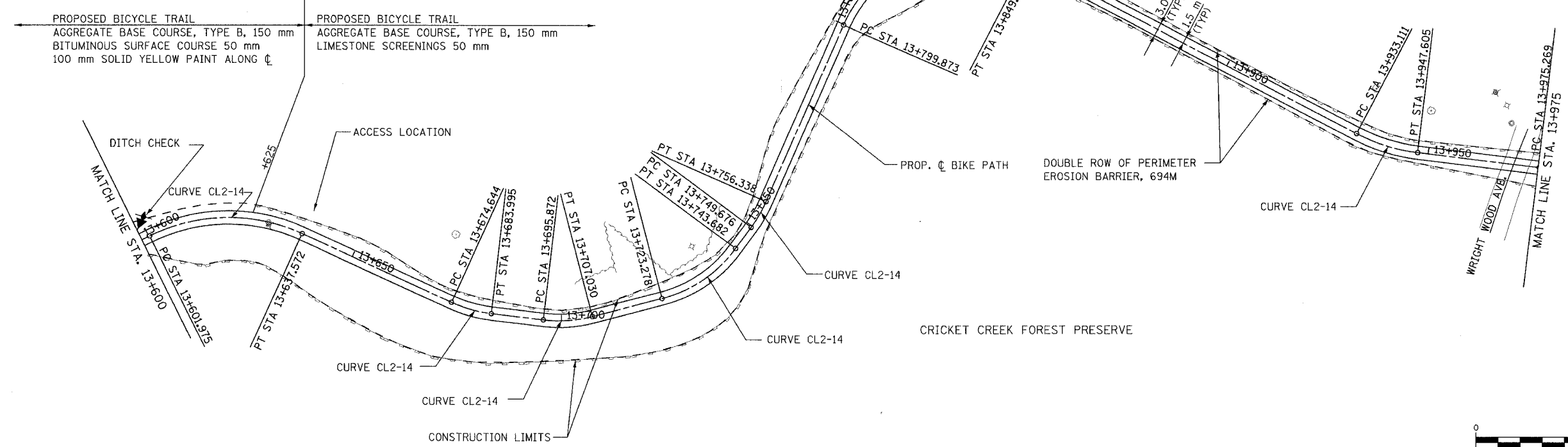


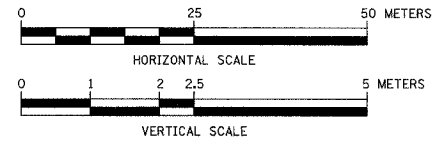
SECTION	COUNTY	TOTAL SHEETS	SHEET NO.
02-00090-00-BT	DUPAGE	117	26
STA. TO STA.			
IDOT PROJECT NO. M-8003(222)			
SALT CREEK GREENWAY TRAIL			
CONTRACT NO. 83713			



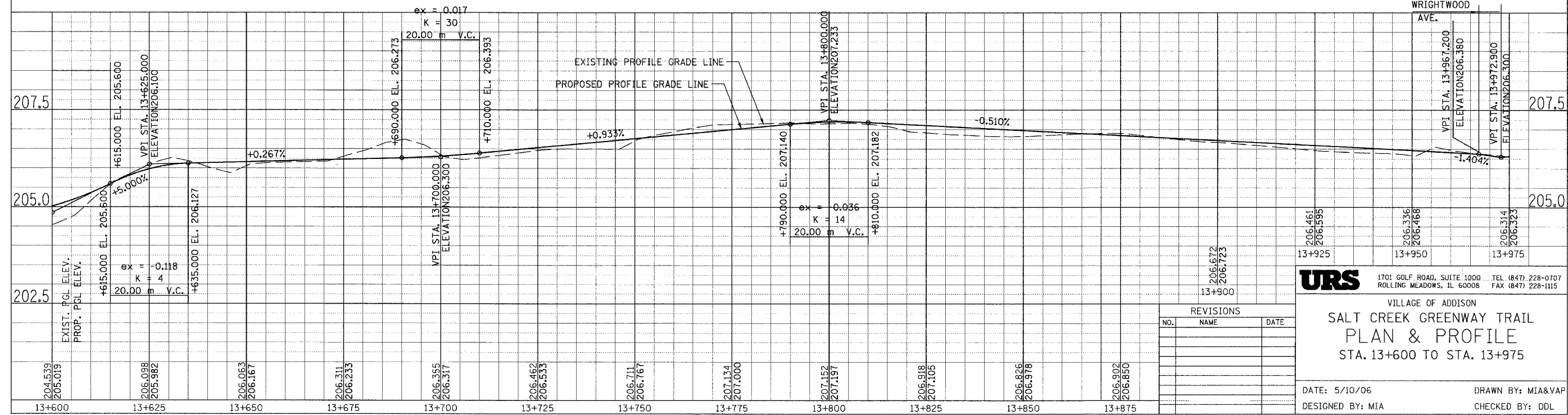
PROP. CURVE CL2-14 PI STA = 13+621.049 N = 48,112.957 E = 6,086.554 $\Delta = 50^\circ 59' 19''$ (RT) R = 40,000 m T = 19.074 m L = 35.597 m E = 4.315 m	PROP. CURVE CL2-15 PI STA = 13+679.358 N = 48,052.291 E = 6,081.694 $\Delta = 17^\circ 51' 33''$ (LT) R = 30,000 m T = 4.714 m L = 9.351 m E = 0.368 m	PROP. CURVE CL2-16 PI STA = 13+701.516 N = 48,030.651 E = 6,086.800 $\Delta = 21^\circ 18' 36''$ (LT) R = 30,000 m T = 5.644 m L = 11.158 m E = 0.526 m	PROP. CURVE CL2-17 PI STA = 13+733.892 N = 48,003.890 E = 6,105.253 $\Delta = 38^\circ 58' 08''$ (LT) R = 30,000 m T = 10.614 m L = 20.404 m E = 1.822 m	PROP. CURVE CL2-18 PI STA = 13+753.020 N = 47,998.242 E = 6,124.391 $\Delta = 12^\circ 43' 21''$ (LT) R = 30,000 m T = 3.344 m L = 6.661 m E = 0.186 m	PROP. CURVE CL2-19 PI STA = 13+832.060 N = 47,993.111 E = 6,203.291 $\Delta = 94^\circ 01' 46''$ (RT) R = 30,000 m T = 32.188 m L = 49.234 m E = 14.000 m	PROP. CURVE CL2-20 PI STA = 13+940.438 N = 47,870.721 E = 6,186.635 $\Delta = 20^\circ 45' 38''$ (LT) R = 40,000 m T = 7.327 m L = 14.494 m E = 0.666 m
---	---	--	---	---	--	--



CRICKET CREEK FOREST PRESERVE



FOR LEGEND SEE SHEET NO. 14



URS 1701 GOLF ROAD, SUITE 1000 TEL (847) 228-0707
 ROLLING MEADOWS, IL 60008 FAX (847) 228-1115

VILLAGE OF ADDISON
**SALT CREEK GREENWAY TRAIL
 PLAN & PROFILE
 STA. 13+600 TO STA. 13+975**

DATE: 5/10/06 DRAWN BY: MIA&VAP
 DESIGNED BY: MIA CHECKED BY: DDL

REVISIONS		
NO.	NAME	DATE