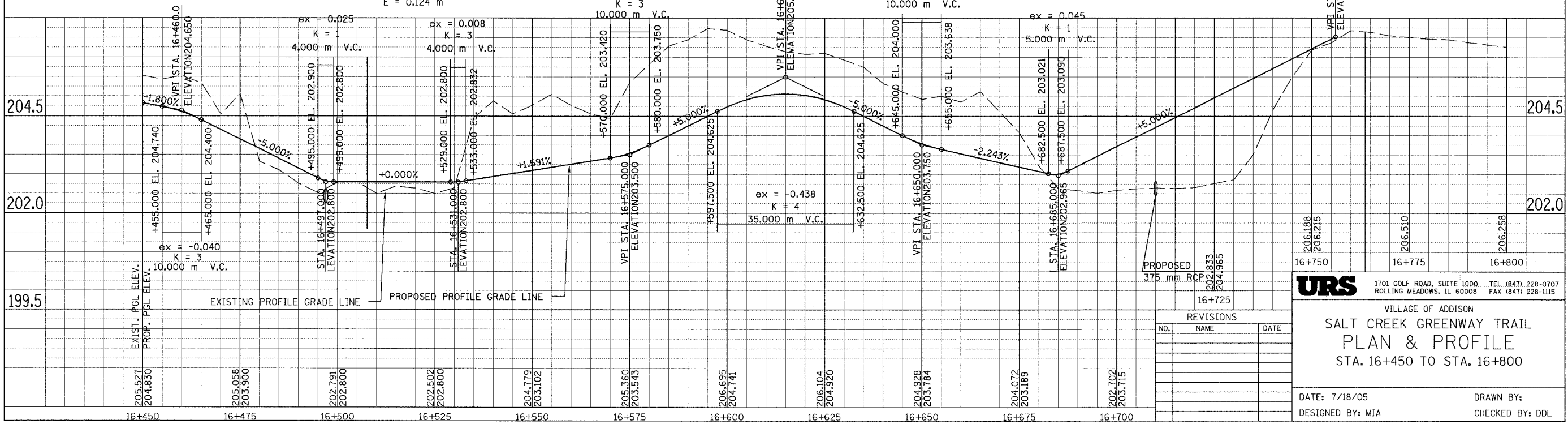
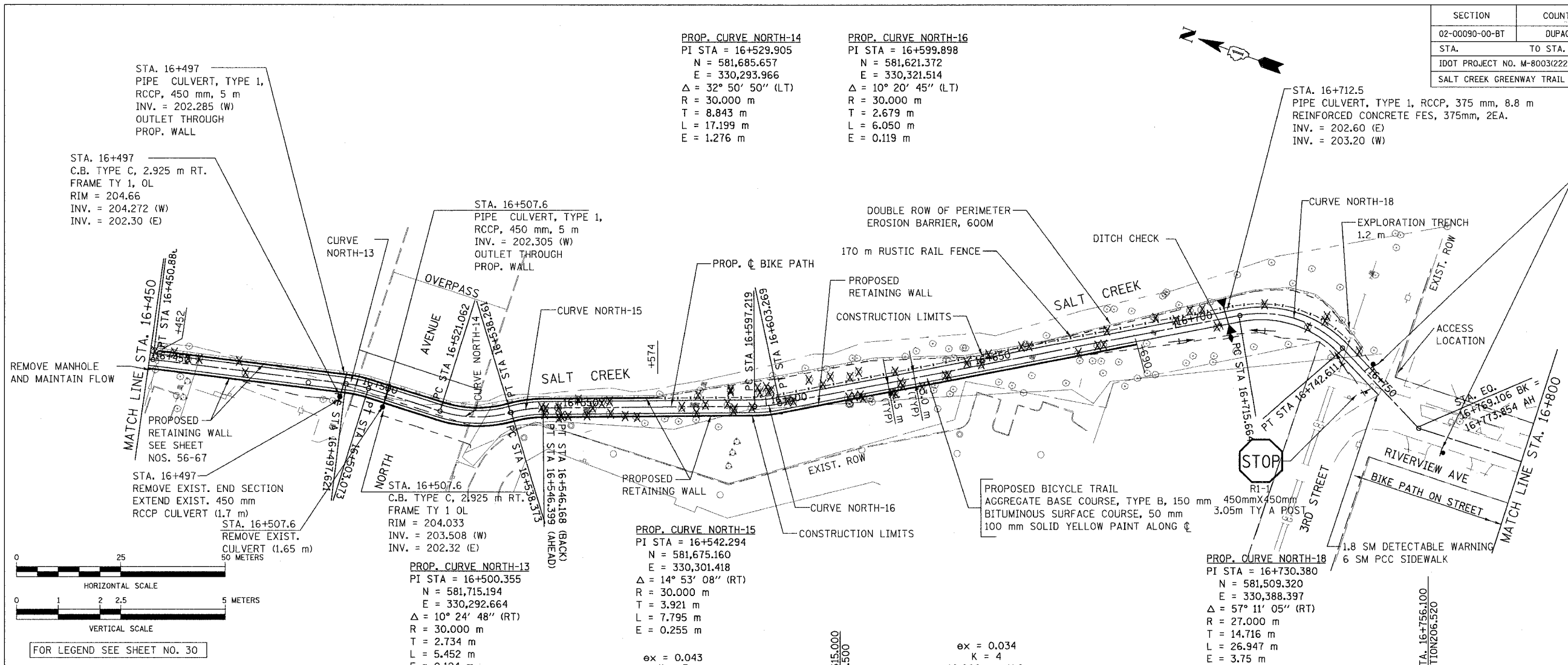
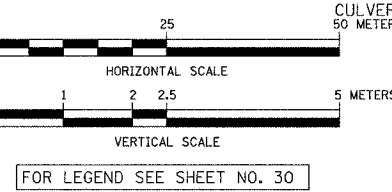


SECTION	COUNTY	TOTAL SHEETS	SHEET NO.
02-00090-00-BT	DUPAGE	117	32
STA.	TO STA.		
IDOT PROJECT NO. M-8003(222)			
SALT CREEK GREENWAY TRAIL			



CONTRACT NO. 83713

SIGN PANELS TYPE 1 WITH ALUMINUM SIGN POST, SPECIAL (SEE DETAIL)



**URS**  
 1701 GOLF ROAD, SUITE 1000 TEL (847) 228-0707  
 ROLLING MEADOWS, IL 60008 FAX (847) 228-1115

VILLAGE OF ADDISON  
**SALT CREEK GREENWAY TRAIL**  
**PLAN & PROFILE**  
 STA. 16+450 TO STA. 16+800

REVISIONS		
NO.	NAME	DATE

DATE: 7/18/05  
 DESIGNED BY: MIA  
 DRAWN BY:  
 CHECKED BY: DDL