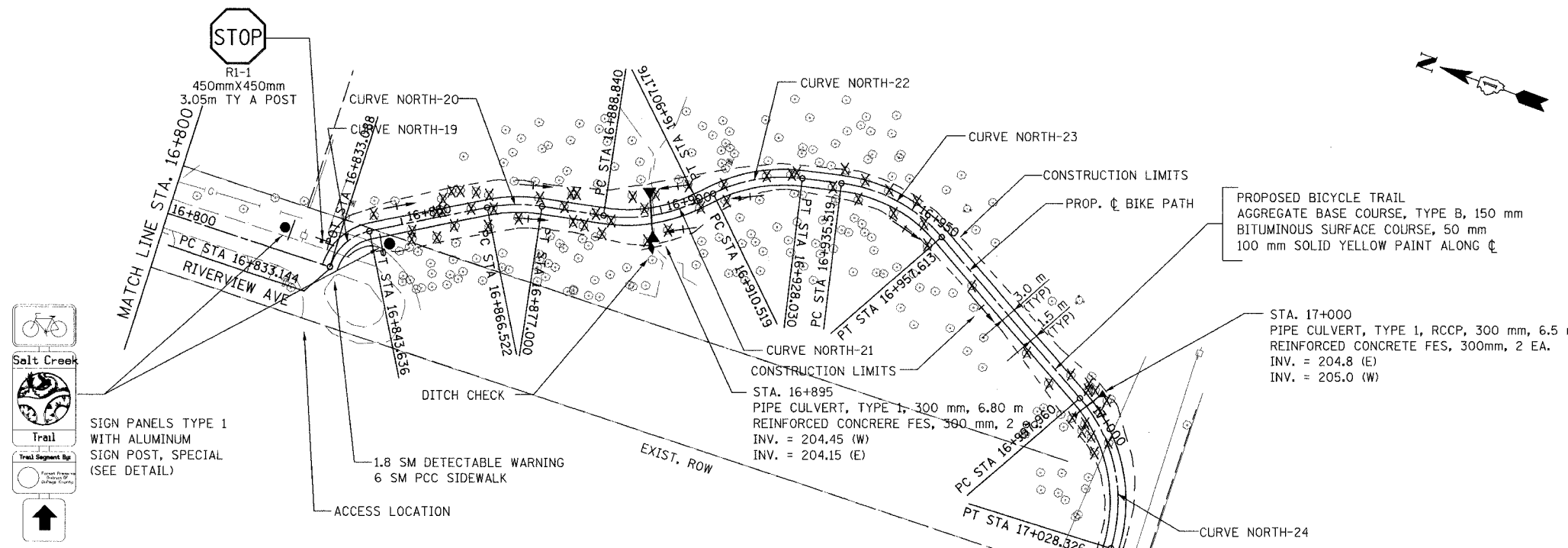
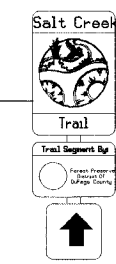


SECTION	COUNTY	TOTAL SHEETS	SHEET NO.
02-00090-00-BT	DUPAGE	117	33
STA.	TO STA.		
IDOT PROJECT NO. M-8003(222)			
SALT CREEK GREENWAY TRAIL			
CONTRACT NO. 83713			



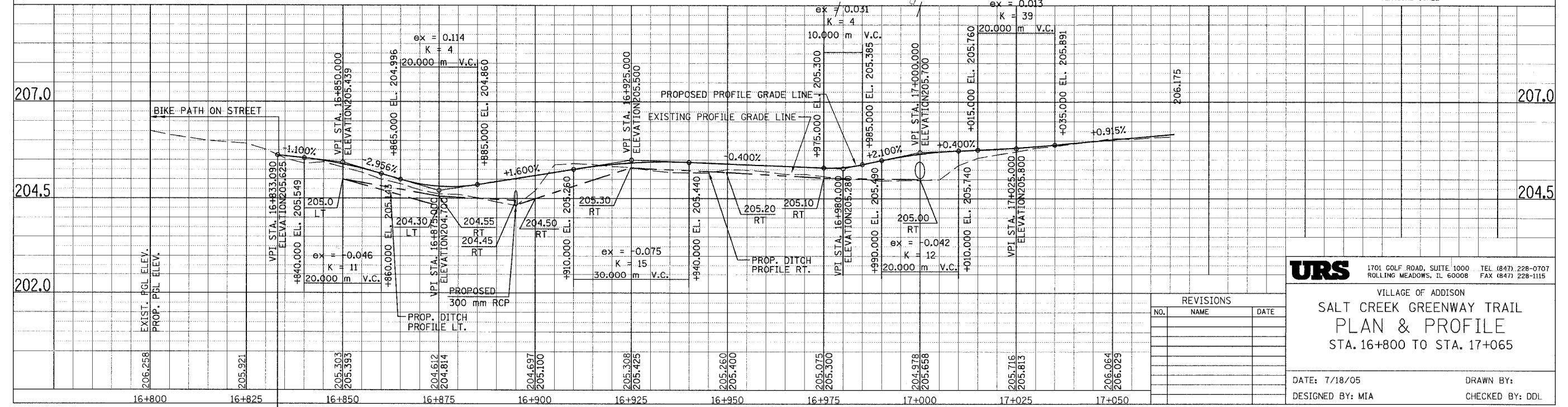
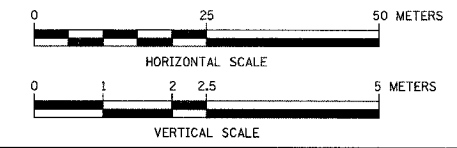
SIGN PANELS TYPE 1 WITH ALUMINUM SIGN POST, SPECIAL (SEE DETAIL)



SIGN PANELS TYPE 1 WITH ALUMINUM SIGN POST, SPECIAL (SEE DETAIL)

PROP. CURVE NORTH-19	PROP. CURVE NORTH-20	PROP. CURVE NORTH-21	PROP. CURVE NORTH-22	PROP. CURVE NORTH-23	PROP. CURVE NORTH-24
PI STA = 16+839.211	PI STA = 16+872.096	PI STA = 16+898.585	PI STA = 16+919.813	PI STA = 16+947.375	PI STA = 17+014.869
N = 581,413.352	N = 581,384.356	N = 581,358.281	N = 581,343.231	N = 581,315.868	N = 581,315.868
E = 330,378.176	E = 330,395.865	E = 330,401.110	E = 330,416.910	E = 330,423.201	E = 330,423.201
$\Delta = 60^\circ 06' 59''$ (RT)	$\Delta = 20^\circ 00' 38''$ (RT)	$\Delta = 35^\circ 01' 08''$ (LT)	$\Delta = 33^\circ 26' 37''$ (RT)	$\Delta = 42^\circ 11' 46''$ (RT)	$\Delta = 57^\circ 59' 40''$ (RT)
R = 10,000 m	R = 30,000 m	R = 30,000 m	R = 30,000 m	R = 30,000 m	R = 30,000 m
T = 5.787 m	T = 5.293 m	T = 9.464 m	T = 9.013 m	T = 11.575 m	T = 16.627 m
L = 10.492 m	L = 10.478 m	L = 18.336 m	L = 17.511 m	L = 22.094 m	L = 30.366 m
E = 1.554 m	E = 0.463 m	E = 1.458 m	E = 1.325 m	E = 2.156 m	E = 4.300 m

FOR LEGEND SEE SHEET NO. 30



URS 1701 GOLF ROAD, SUITE 1000 TEL (847) 228-0707
 ROLLING MEADOWS, IL 60008 FAX (847) 228-1115

VILLAGE OF ADDISON
SALT CREEK GREENWAY TRAIL
PLAN & PROFILE
 STA. 16+800 TO STA. 17+065

DATE: 7/18/05 DRAWN BY:
 DESIGNED BY: MIA CHECKED BY: DDL

REVISIONS		
NO.	NAME	DATE