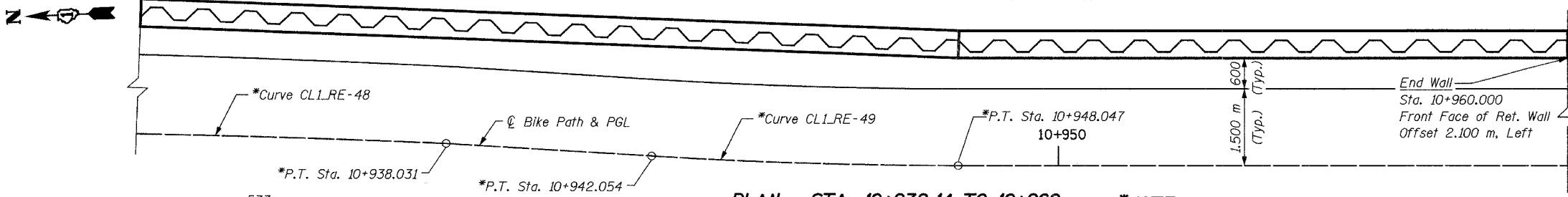


ELEVATION - STA. 10+932.14 TO 10+960

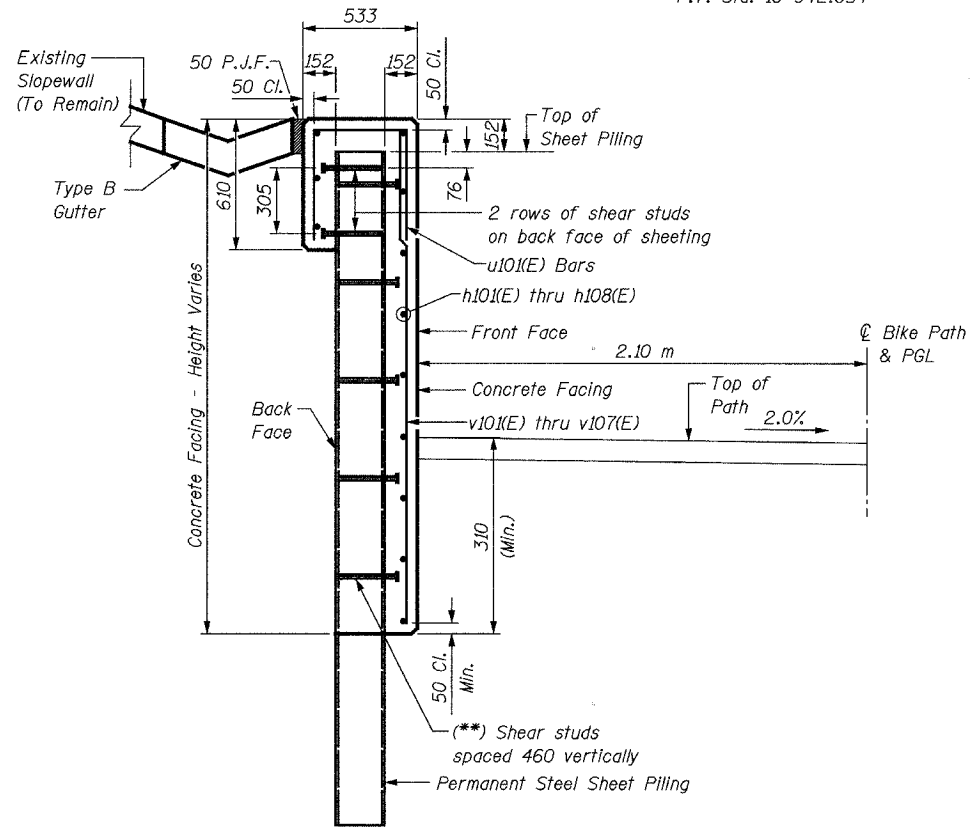


PLAN - STA. 10+932.14 TO 10+960

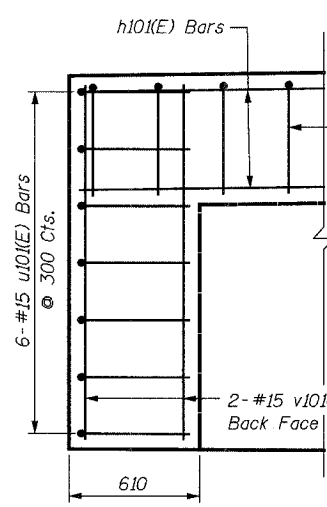
(Reinforcement Omitted for Clarity)

***NOTE:**
For horizontal curve and alignment information, see Plan & Profile drawings.

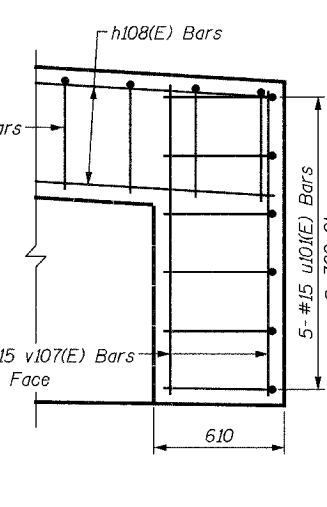
(*)NOTE:**
Shear studs shall be 19 dia. x 280 Granular or Solid Flux Filled Headed Studs conforming to 505.08 (m) of the Standard Specifications automatically end welded, in the field to Sheet Piling. The cost of the studs is included in the cost of PERMANENT STEEL SHEET PILING.



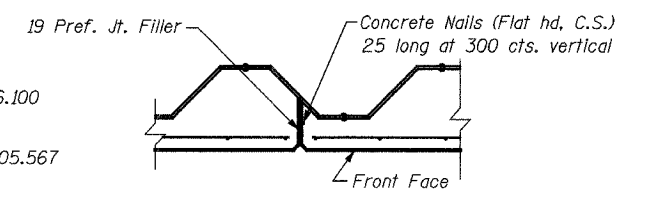
TYPICAL SECTION THRU WALL



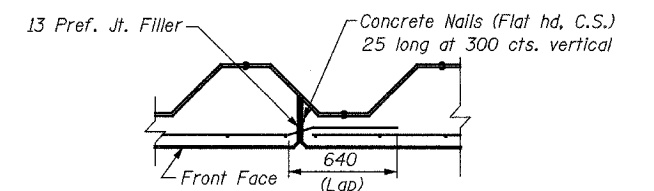
END CAP WALL REINFORCEMENT (North End)



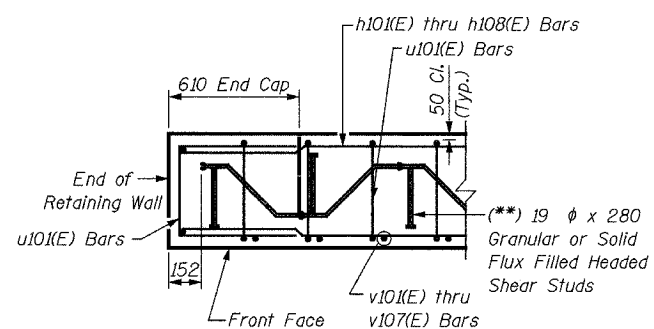
END CAP WALL REINFORCEMENT (South End)



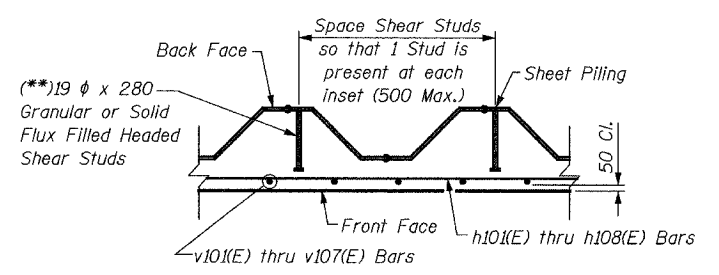
EXPANSION JOINT DETAIL



CONSTRUCTION JOINT DETAIL



SECTION THRU CAP



TYPICAL SECTION THRU WALL

NOTES:
For Bill of Material and Notes, see Sheet S4.

SHEET S5 of S28

REVISIONS		NAME	DATE
NO.	DESCRIPTION		

1701 GOLF ROAD, SUITE 1000
ROLLING MEADOWS, IL 60008

TEL (847) 228-0707
FAX (847) 228-1115

VILLAGE OF ADDISON
SALT CREEK GREENWAY TRAIL
RET. WALL, STA. 10+880 TO 10+960
PLAN, ELEVATION AND DETAILS

DATE: 06/30/05
DESIGNED BY: MDS

DRAWN BY: MDS
CHECKED BY: GAT