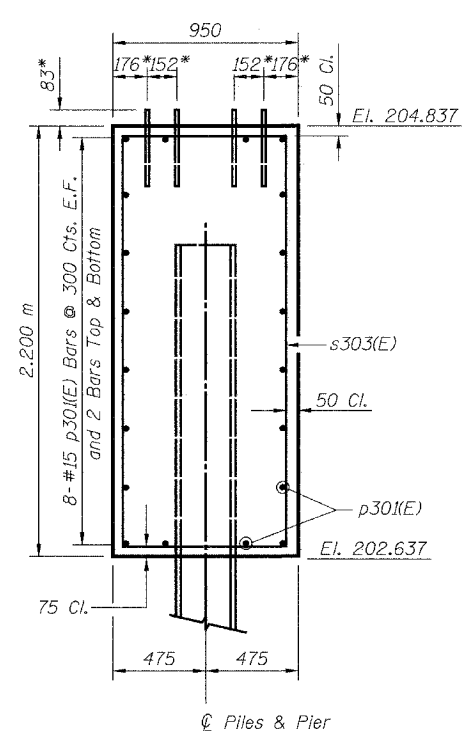


ELEVATION

PILE DATA:

Type: HP310x79
 Capacity: Driven to Refusal
 Est. Length: 21.0 m
 No. Required: 3



SECTION B-B

*Anchor bolt size and locations shall be checked against the bridge fabricator's requirements prior to setting them.

BILL OF MATERIAL

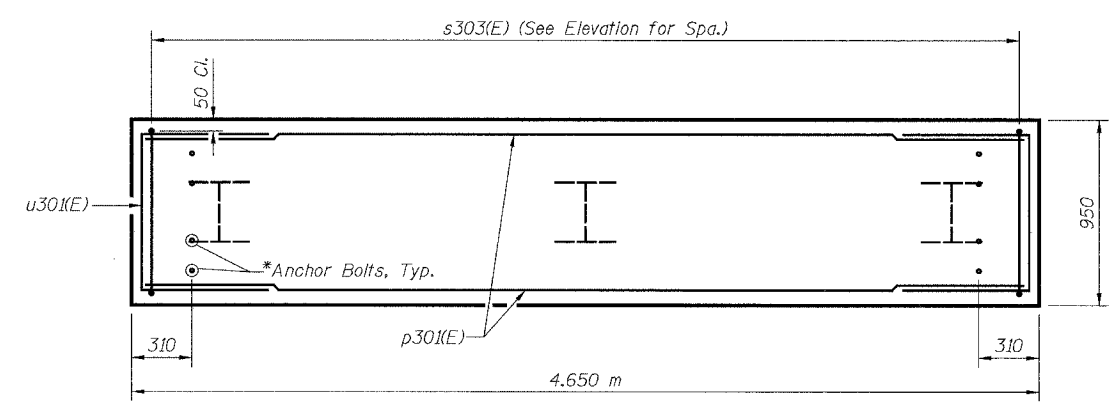
Bar	No.	Size	Length	Shape
p30(E)	20	#15	4.55 m	—
s30(E)	14	#15	6.12 m	□
u30(E)	16	#15	2.63 m	┌
Concrete Structures			Cu. M	9.8
Reinforcement Bars, Epoxy Coated			kg	350
Furnishing Steel Piles HP310x79			Meter	63
Driving Steel Piles			Meter	63
Metal Shoes			Each	3
Structure Excavation			Cu. M	5.1

LEGEND

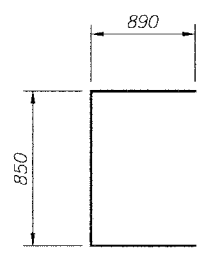
E.F. = Each Face

MIN. BAR LAP

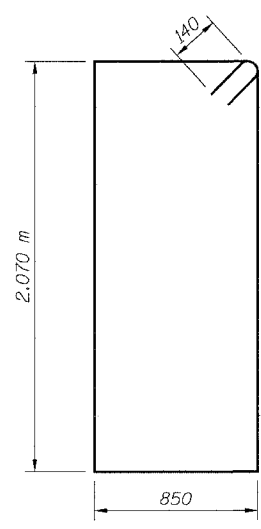
#15 = 890



PLAN



BAR u30(E)



BAR s30(E)

NOTES:

- Space reinforcement in cap to miss anchor bolts.
- All edges shall have standard 20 mm chamfers except as noted.
- For Anchor Bolt Details, see Sheet S27.
- There shall be no splicing of longitudinal bars. Bars shall be ordered full length.
- Bars designated (E) shall be epoxy coated.

SHEET S14 of S28

REVISIONS		NAME	DATE
NO.	DESCRIPTION		

URS

1701 GOLF ROAD, SUITE 1000
 ROLLING MEADOWS, IL 60008

TEL (847) 228-0707
 FAX (847) 228-1115

VILLAGE OF ADDISON

SALT CREEK GREENWAY TRAIL

PEDESTRIAN BRIDGE, STA. 15+837.5

PIER DETAILS

DATE: 11/03/04
 DESIGNED BY: MDS

DRAWN BY: MDS
 CHECKED BY: GAT