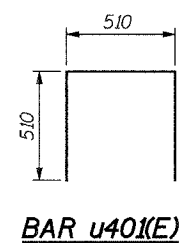
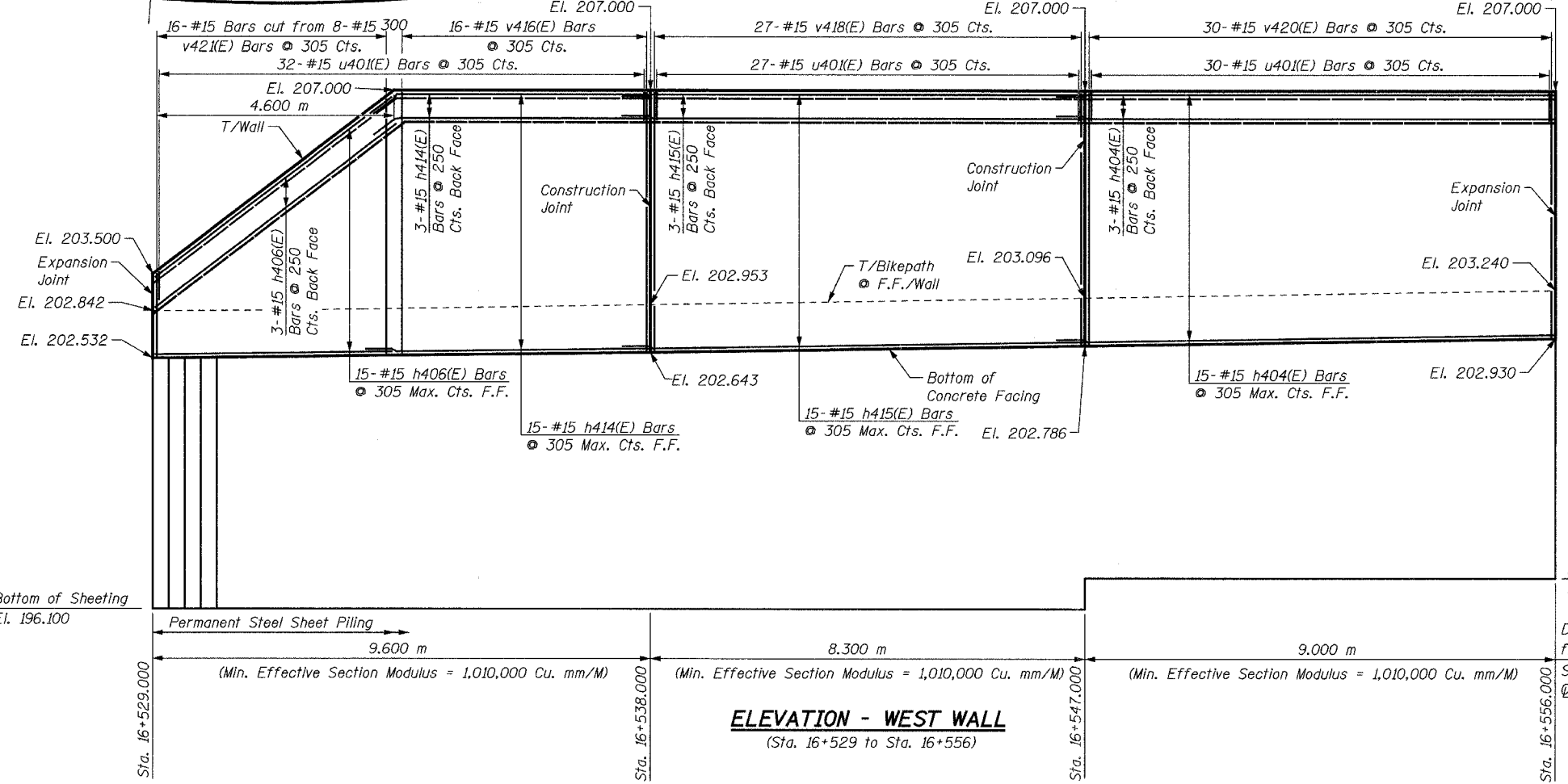
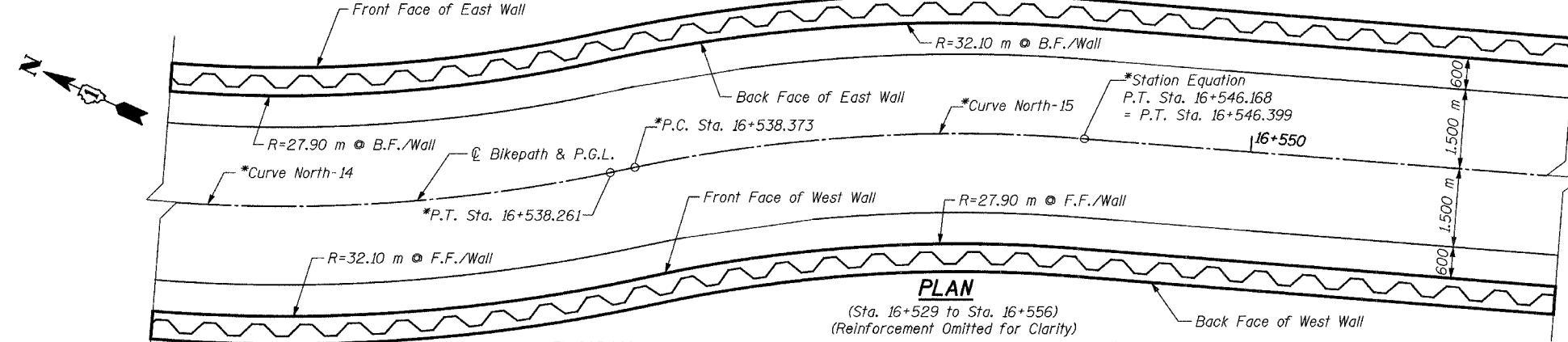
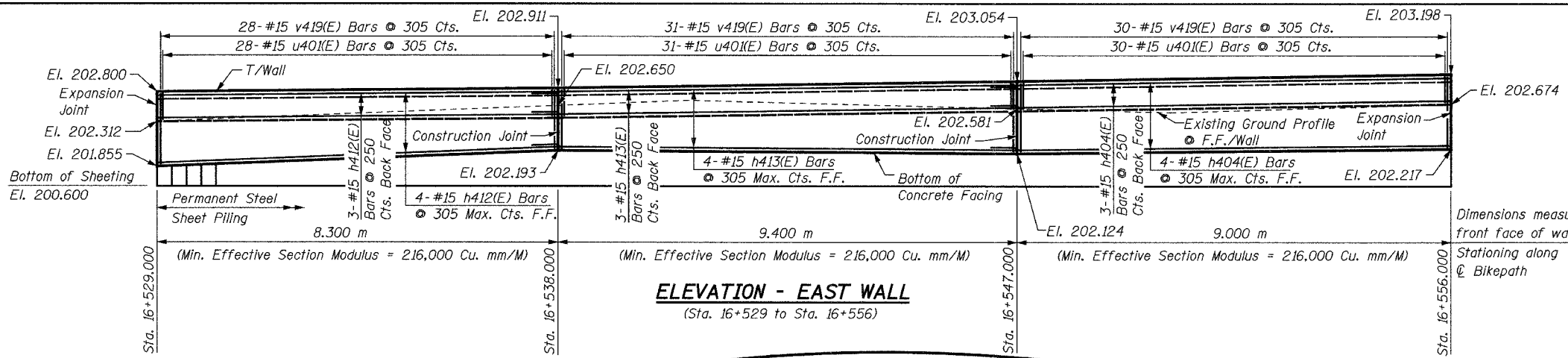


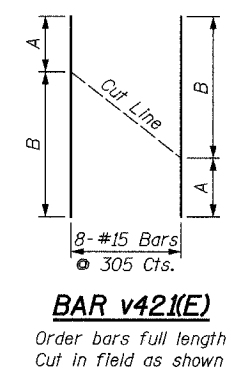
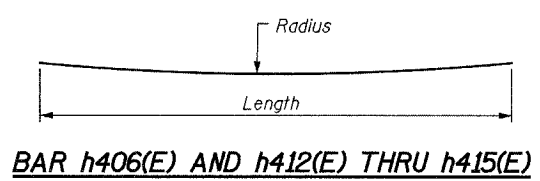
BILL OF MATERIAL

| Bar | No. | Size | Length | Shape |
|----------------------------------|-----|-------|---------|-------|
| h404(E) | 25 | #15 | 9.60 m | — |
| h406(E) | 18 | #15 | 5.80 m | — |
| h412(E) | 7 | #15 | 8.20 m | — |
| h413(E) | 7 | #15 | 10.10 m | — |
| h414(E) | 18 | #15 | 5.64 m | — |
| h415(E) | 18 | #15 | 8.90 m | — |
| u401(E) | 178 | #15 | 1.53 m | ⊏ |
| v416(E) | 16 | #15 | 4.30 m | — |
| v418(E) | 27 | #15 | 4.24 m | — |
| v419(E) | 89 | #15 | 0.92 m | — |
| v420(E) | 30 | #15 | 4.11 m | — |
| v421(E) | 8 | #15 | 5.18 m | — |
| Concrete Structures | | Cu. M | 49.2 | |
| Reinforcement Bars, Epoxy Coated | | kg | 2,261 | |
| Structure Excavation | | Cu. M | 22.5 | |
| Permanent Steel | | Sq. M | 336 | |
| Sheet Piling | | Sq. M | 336 | |
| Pipe Handrail | | Meter | 54 | |



| Bar | Radius | Length |
|---------|---------|---------|
| h406(E) | 32.10 m | 5.80 m |
| h412(E) | 27.90 m | 8.20 m |
| h413(E) | 32.10 m | 10.10 m |
| h414(E) | 32.10 m | 5.64 m |
| h415(E) | 27.90 m | 8.90 m |

| Bar | A | B |
|---------|--------|--------|
| v421(E) | 0.87 m | 4.31 m |



***NOTE:**
For horizontal curve and alignment information, see Plan & Profile drawings.

NOTES:
See Sheet S16 for Notes.

| REVISIONS | |
|-----------|------|
| NAME | DATE |
| | |
| | |
| | |
| | |
| | |
| | |
| | |
| | |
| | |
| | |

URS 1701 GOLF ROAD, SUITE 1000 TEL (847) 228-0707
ROLLING MEADOWS, IL 60008 FAX (847) 228-1115

VILLAGE OF ADDISON
SALT CREEK GREENWAY TRAIL
RET. WALL STA. 16+529 TO 16+556
PLAN & ELEVATION

DATE: 06/30/05
DESIGNED BY: MDS
DRAWN BY: MDS
CHECKED BY: GAT