

SECTION	COUNTY	TOTAL SHEETS	SHEET NO.
02-00034-00-BT	DUPAGE	108	12
STA. TO STA.			
IDOT PROJECT NO. M-8003(216)			
SALT CREEK GREENWAY TRAIL			

CONTRACT NO. 83714



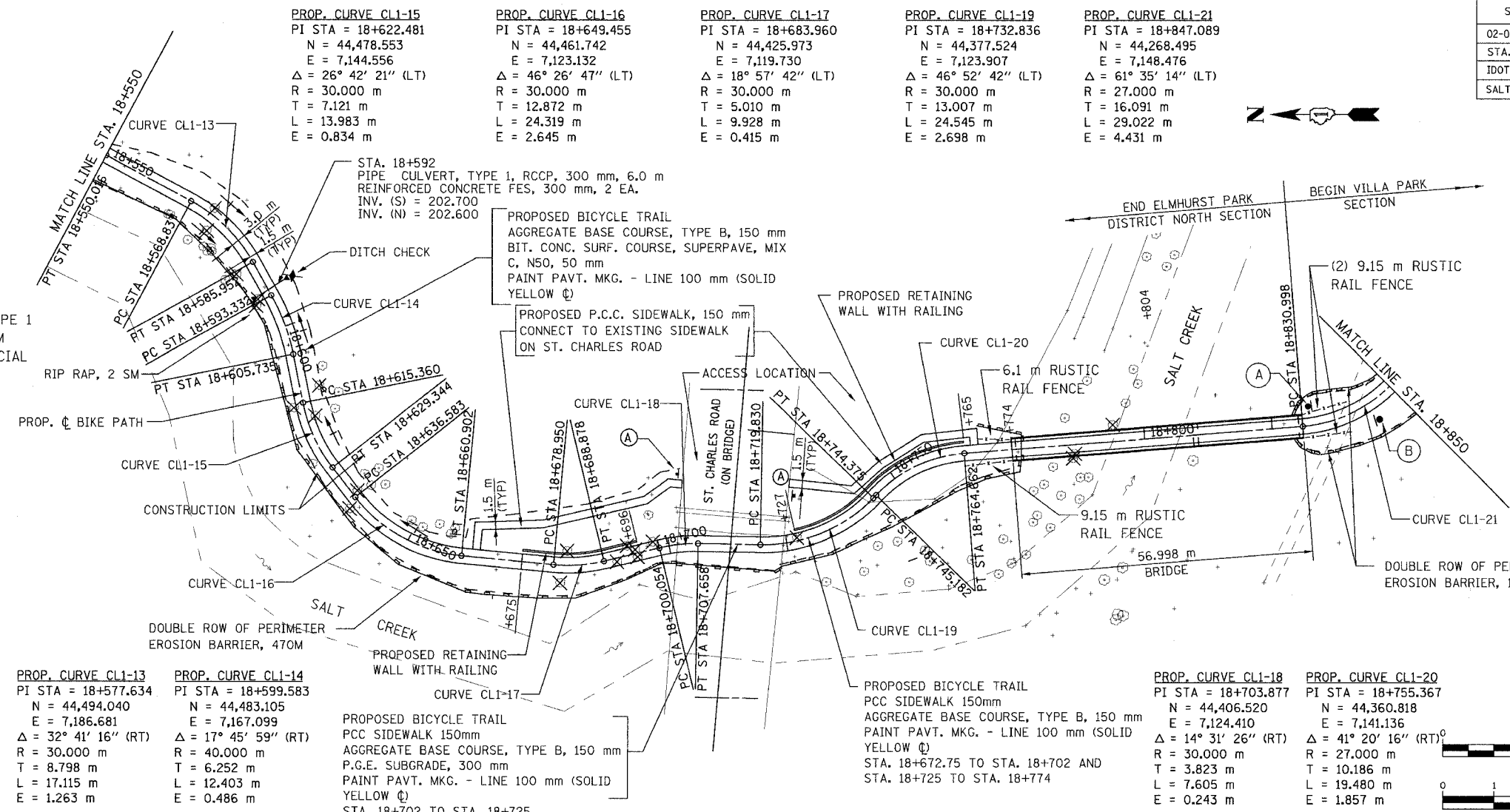
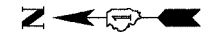
Trail
Elmhurst Park District

(A)
SIGN PANELS, TYPE 1 WITH ALUMINUM SIGN POST, SPECIAL (SEE DETAIL)



Trail
Village of Villa Park

(B)
SIGN PANELS, TYPE 1 WITH ALUMINUM SIGN POST, SPECIAL (SEE DETAIL)



PROP. CURVE CL1-13
PI STA = 18+577.634
N = 44,494.040
E = 7,186.681
Δ = 32° 41' 16" (RT)
R = 30,000 m
T = 8.798 m
L = 17.115 m
E = 1.263 m

PROP. CURVE CL1-14
PI STA = 18+599.583
N = 44,483.105
E = 7,167.099
Δ = 17° 45' 59" (RT)
R = 40,000 m
T = 6.252 m
L = 12.403 m
E = 0.486 m

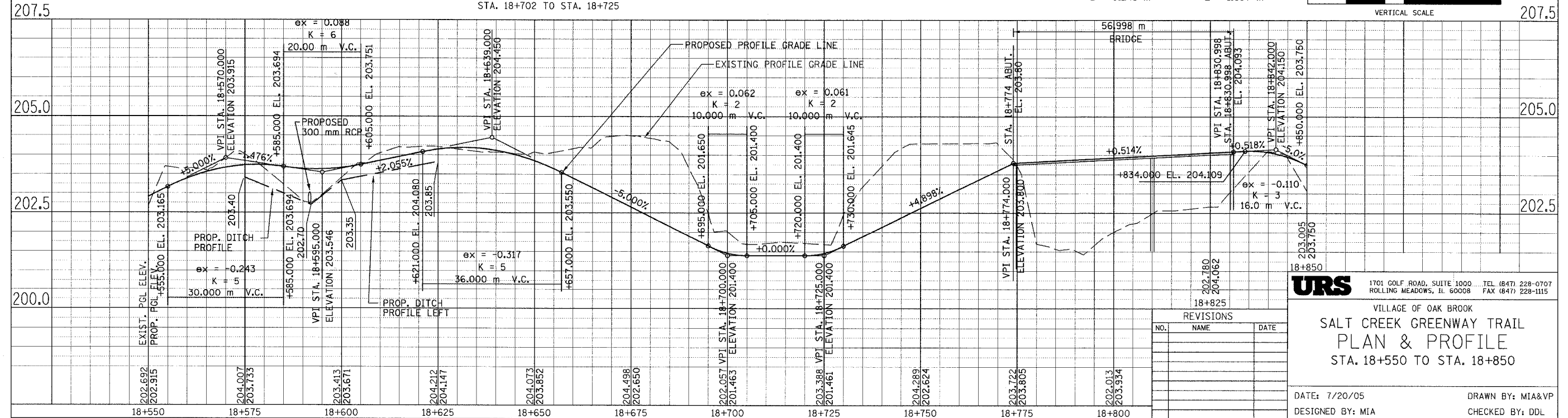
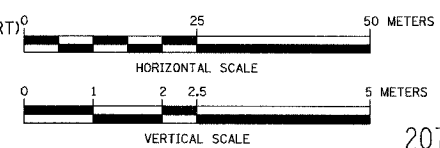
PROPOSED BICYCLE TRAIL
PCC SIDEWALK 150mm
AGGREGATE BASE COURSE, TYPE B, 150 mm
P.G.E. SUBGRADE, 300 mm
PAINT PAVT. MKG. - LINE 100 mm (SOLID YELLOW ☉)
STA. 18+702 TO STA. 18+725

PROPOSED BICYCLE TRAIL
PCC SIDEWALK 150mm
AGGREGATE BASE COURSE, TYPE B, 150 mm
PAINT PAVT. MKG. - LINE 100 mm (SOLID YELLOW ☉)
STA. 18+672.75 TO STA. 18+702 AND STA. 18+725 TO STA. 18+774

PROP. CURVE CL1-18
PI STA = 18+703.877
N = 44,406.520
E = 7,124.410
Δ = 14° 31' 26" (RT)
R = 30,000 m
T = 3.823 m
L = 7.605 m
E = 0.243 m

PROP. CURVE CL1-20
PI STA = 18+755.367
N = 44,360.818
E = 7,141.136
Δ = 41° 20' 16" (RT)
R = 27,000 m
T = 10.186 m
L = 19.480 m
E = 1.857 m

FOR LEGEND SEE SHEET NO. 10



URS 1701 GOLF ROAD, SUITE 1000 TEL (847) 228-0707
ROLLING MEADOWS, IL 60008 FAX (847) 228-1115

VILLAGE OF OAK BROOK
**SALT CREEK GREENWAY TRAIL
PLAN & PROFILE**
STA. 18+550 TO STA. 18+850

DATE: 7/20/05 DRAWN BY: MIA&VP
DESIGNED BY: MIA CHECKED BY: DDL

REVISIONS		
NO.	NAME	DATE