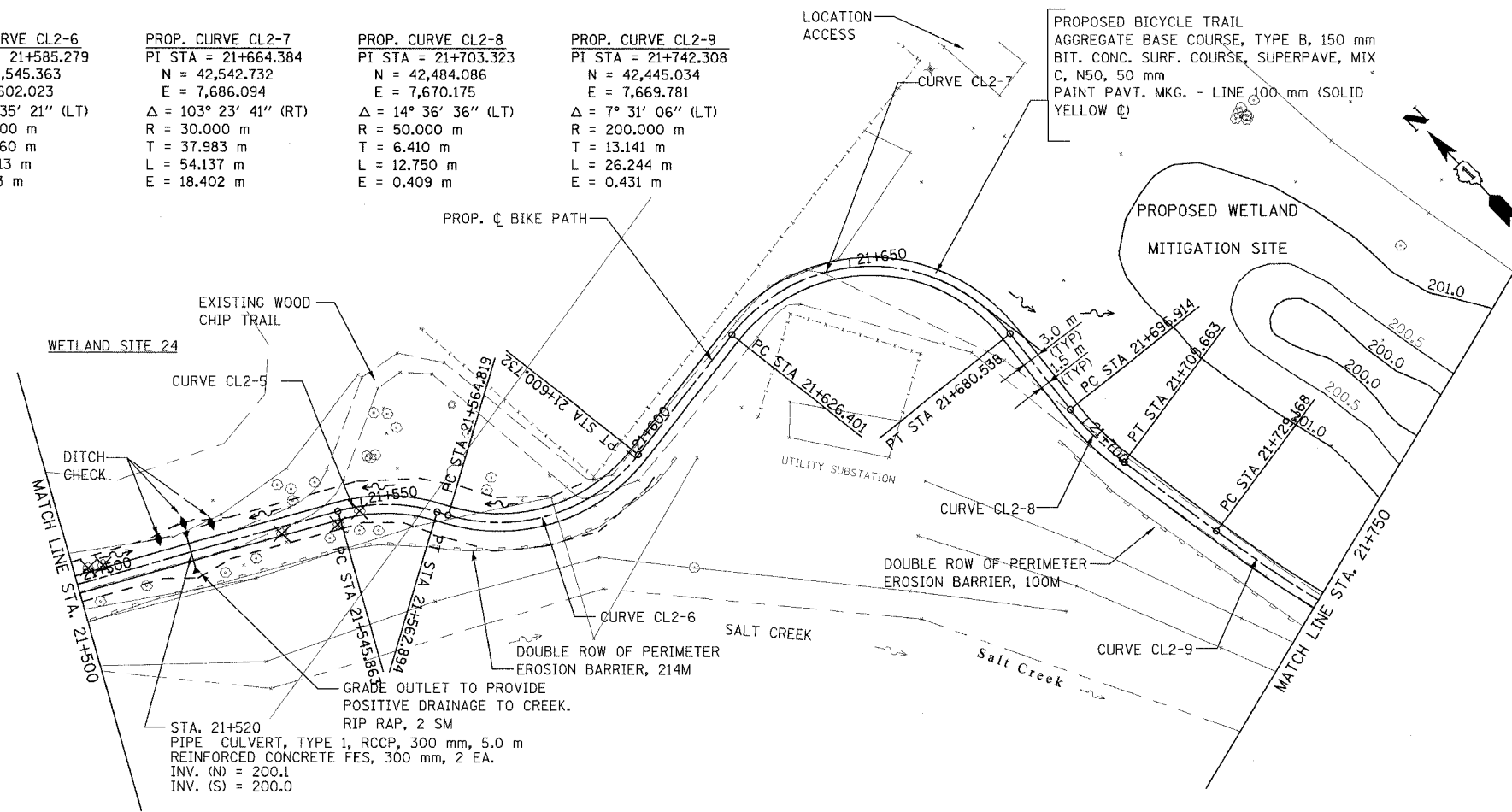
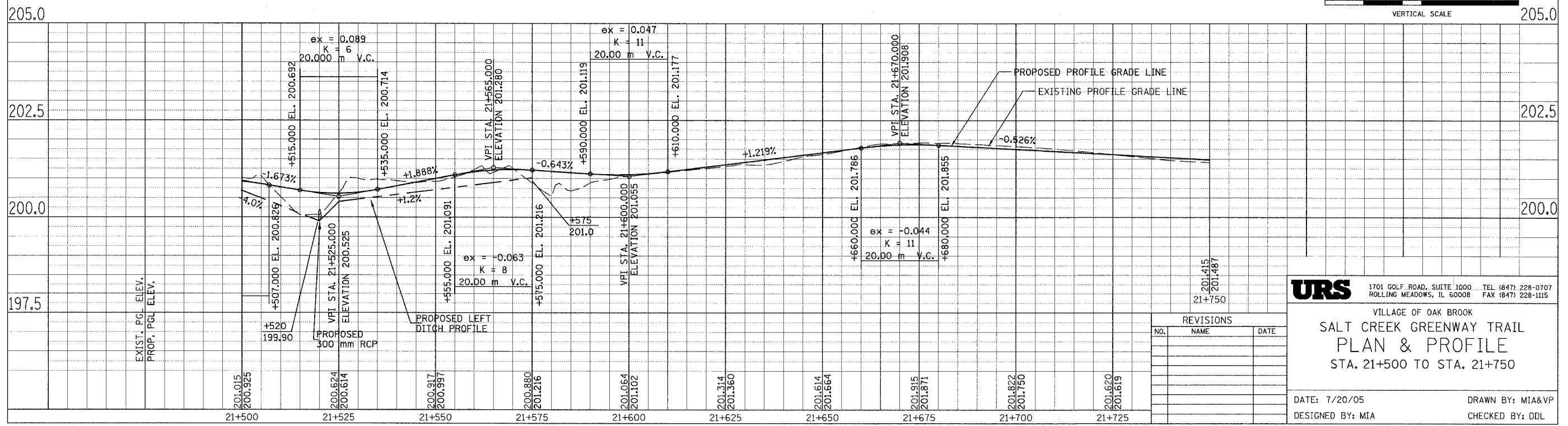
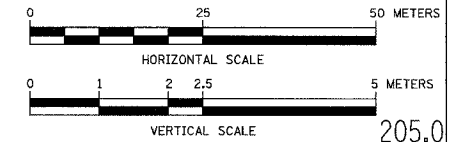


<b>PROP. CURVE CL2-5</b> PI STA = 21+554.615 N = 42,574.692 E = 7,591.569 $\Delta = 32^\circ 31' 35''$ (RT) R = 30.000 m T = 8.752 m L = 17.031 m E = 1.250 m	<b>PROP. CURVE CL2-6</b> PI STA = 21+585.279 N = 42,545.363 E = 7,602.023 $\Delta = 68^\circ 35' 21''$ (LT) R = 30.000 m T = 20.460 m L = 35.913 m E = 6.313 m	<b>PROP. CURVE CL2-7</b> PI STA = 21+664.384 N = 42,542.732 E = 7,686.094 $\Delta = 103^\circ 23' 41''$ (RT) R = 30.000 m T = 37.983 m L = 54.137 m E = 18.402 m	<b>PROP. CURVE CL2-8</b> PI STA = 21+703.323 N = 42,484.086 E = 7,670.175 $\Delta = 14^\circ 36' 36''$ (LT) R = 50.000 m T = 6.410 m L = 12.750 m E = 0.409 m	<b>PROP. CURVE CL2-9</b> PI STA = 21+742.308 N = 42,445.034 E = 7,669.781 $\Delta = 7^\circ 31' 06''$ (LT) R = 200.000 m T = 13.141 m L = 26.244 m E = 0.431 m
---	--	--	---	--

SECTION	COUNTY	TOTAL SHEETS	SHEET NO.
02-00034-00-BT	DUPAGE	108	16
STA. TO STA.			
IDOT PROJECT NO. M-8003(216)			
SALT CREEK GREENWAY TRAIL			
CONTRACT NO. 63714			



FOR LEGEND SEE SHEET NO. 15



**URS** 1701 GOLF ROAD, SUITE 1000 ... TEL (847) 228-0707  
ROLLING MEADOWS, IL 60008 FAX (847) 228-1115

VILLAGE OF OAK BROOK  
**SALT CREEK GREENWAY TRAIL  
PLAN & PROFILE**  
STA. 21+500 TO STA. 21+750

DATE: 7/20/05 DRAWN BY: MIA&VP  
DESIGNED BY: MIA CHECKED BY: DDL

REVISIONS		
NO.	NAME	DATE